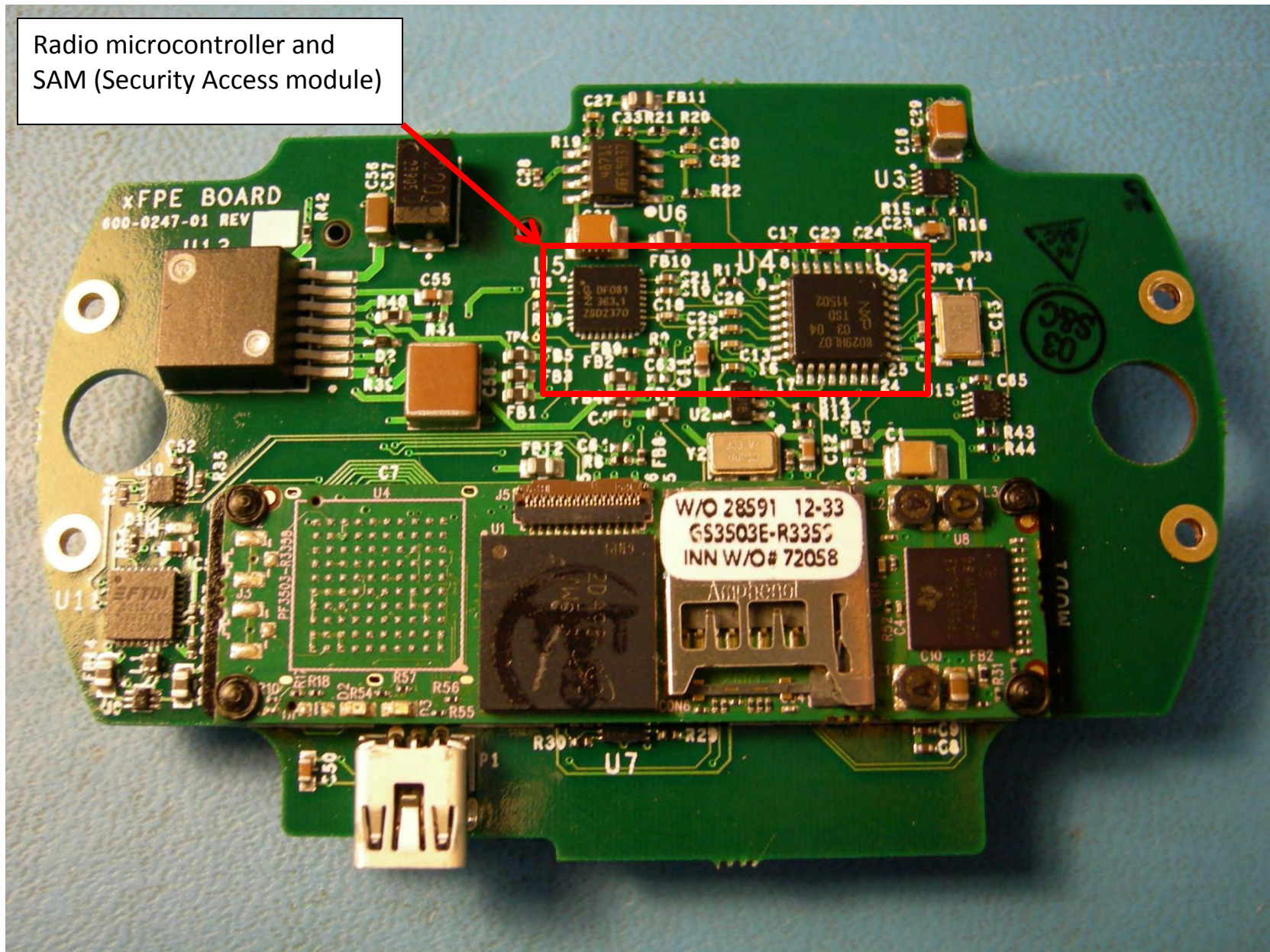
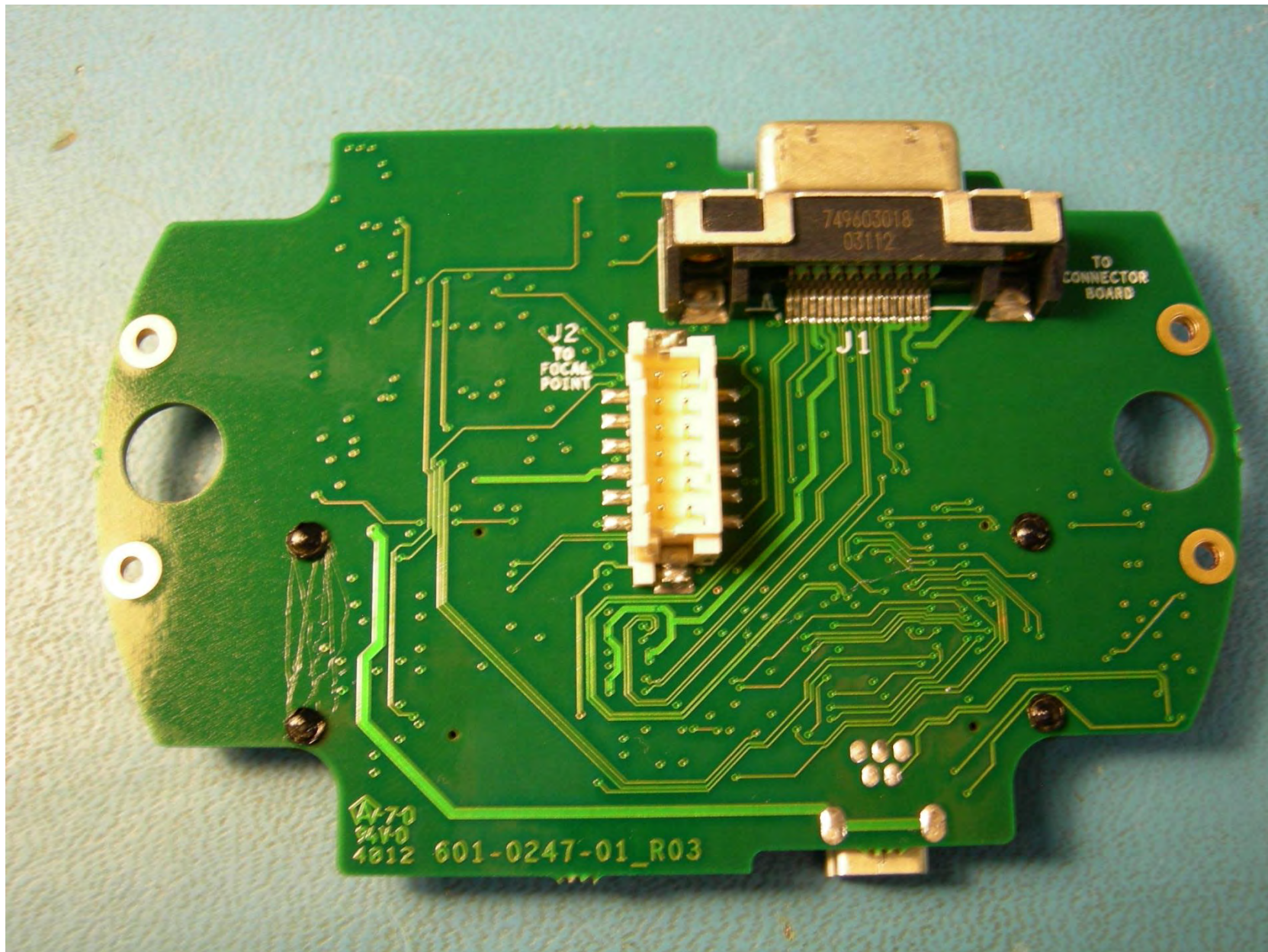


Radio microcontroller and SAM (Security Access module)





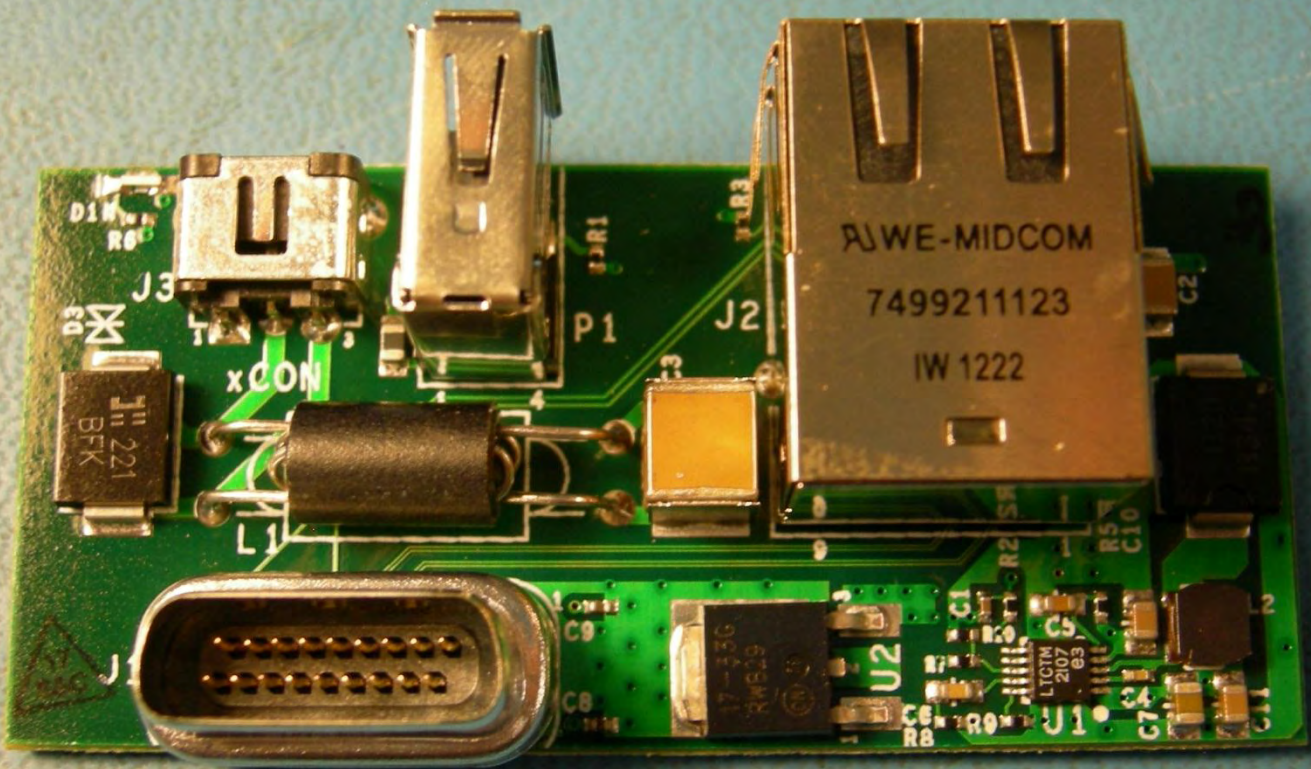
749603018
03112

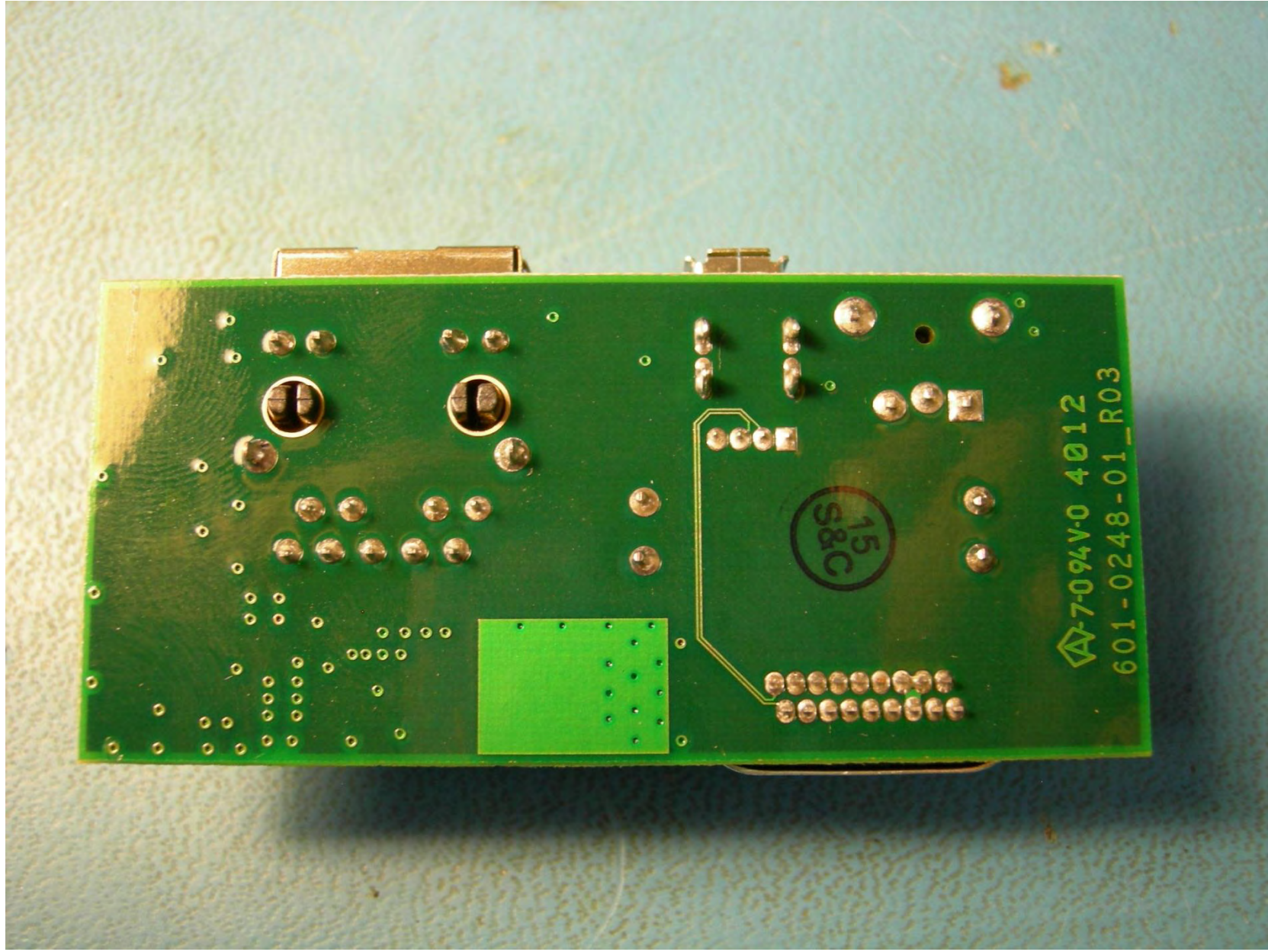
TO
CONNECTOR
BOARD

J2
TO
FOCAL
POINT

J1

470
240
4812 601-0247-01_R03

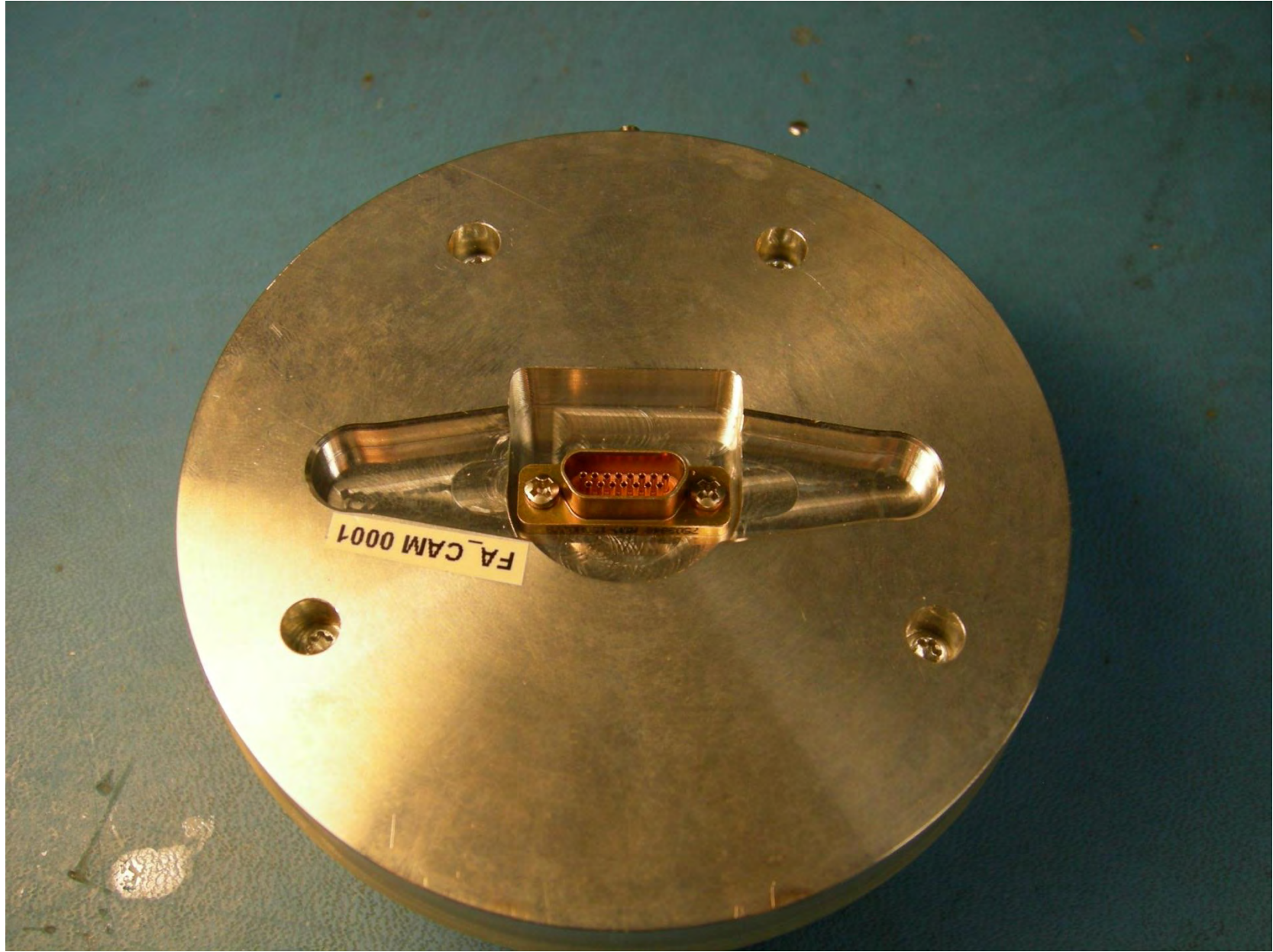




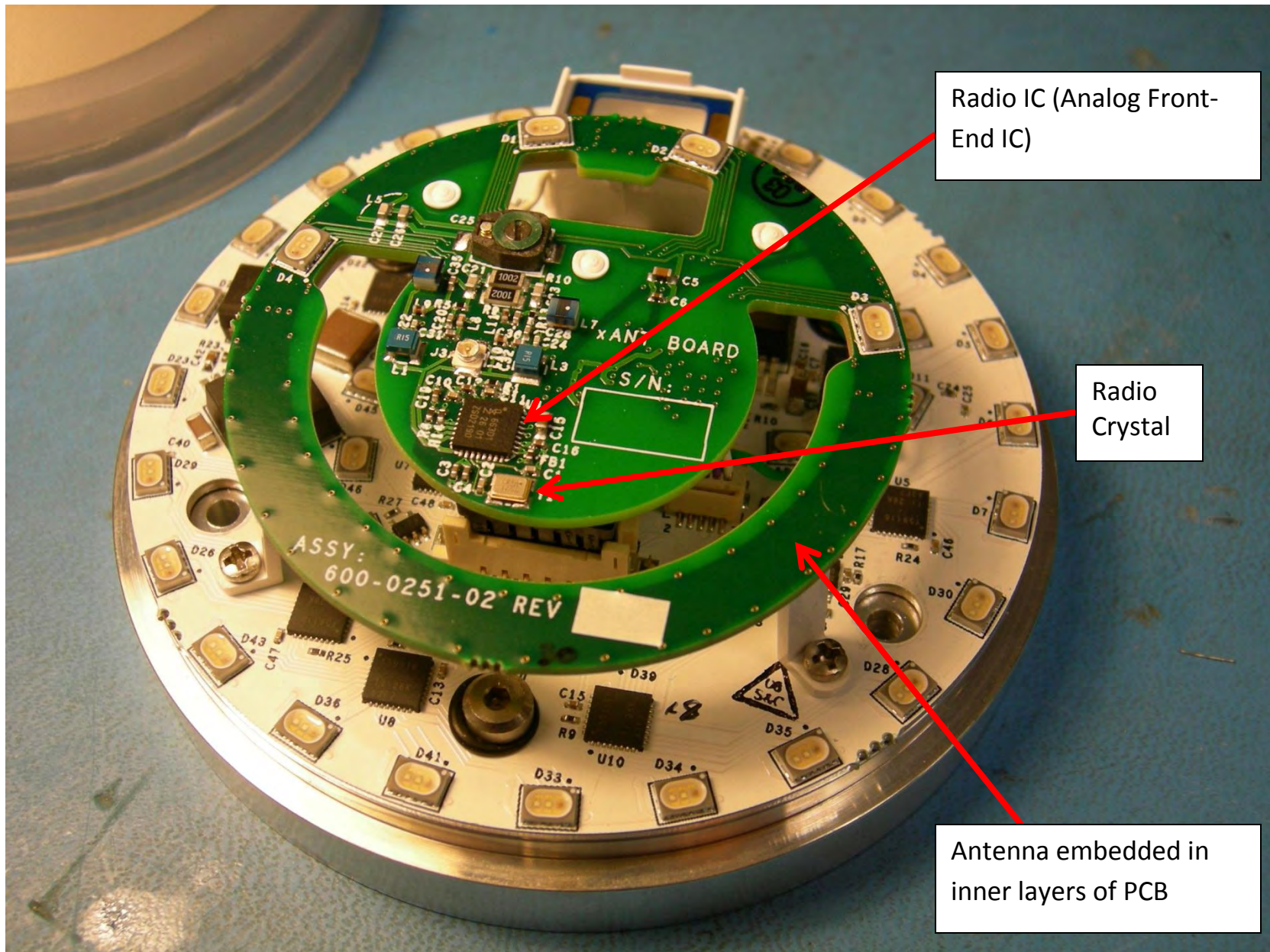
7-094V-0 4012
601-0248-01_R03

15
S8C





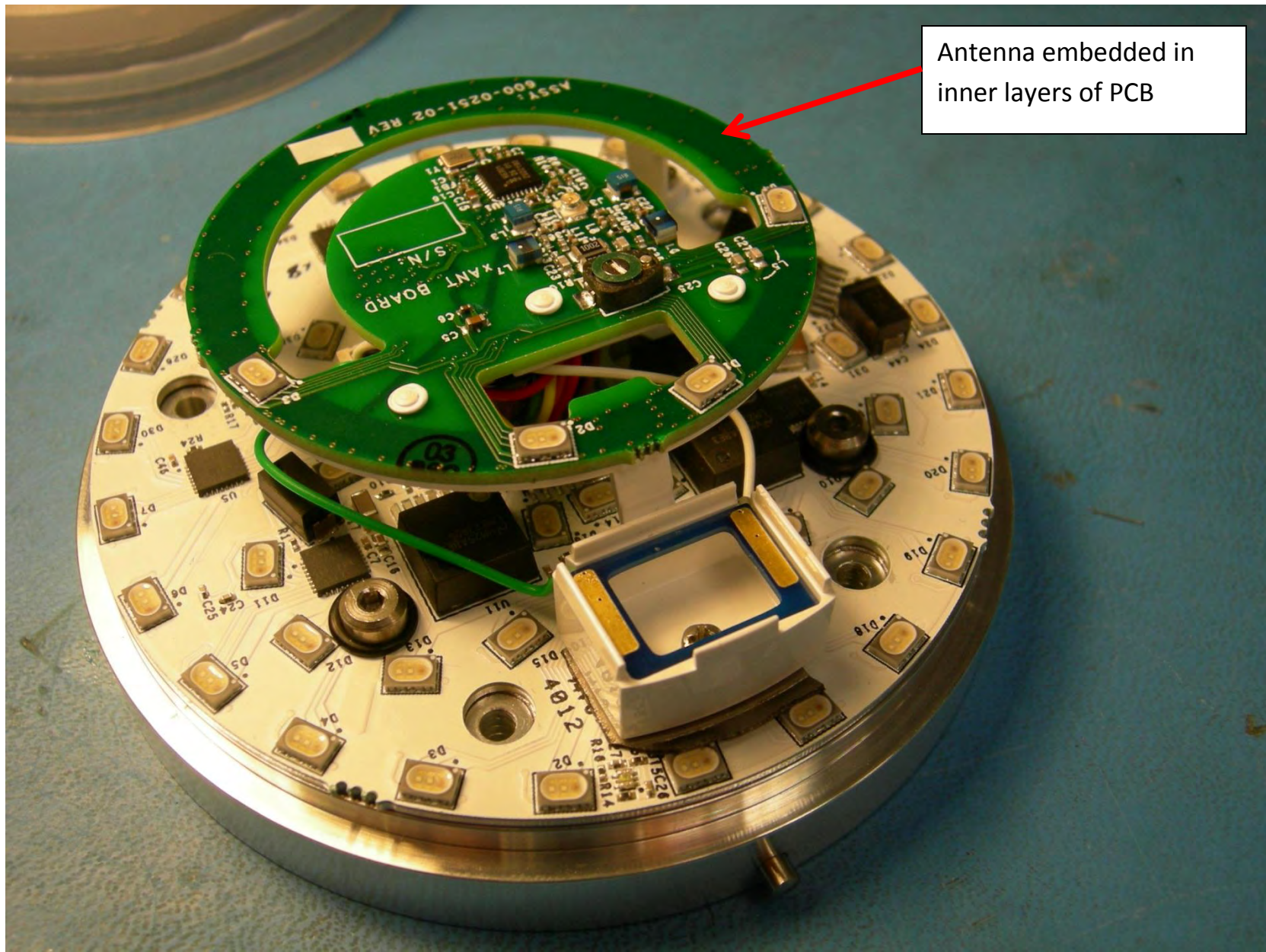
FA_CAM 0001



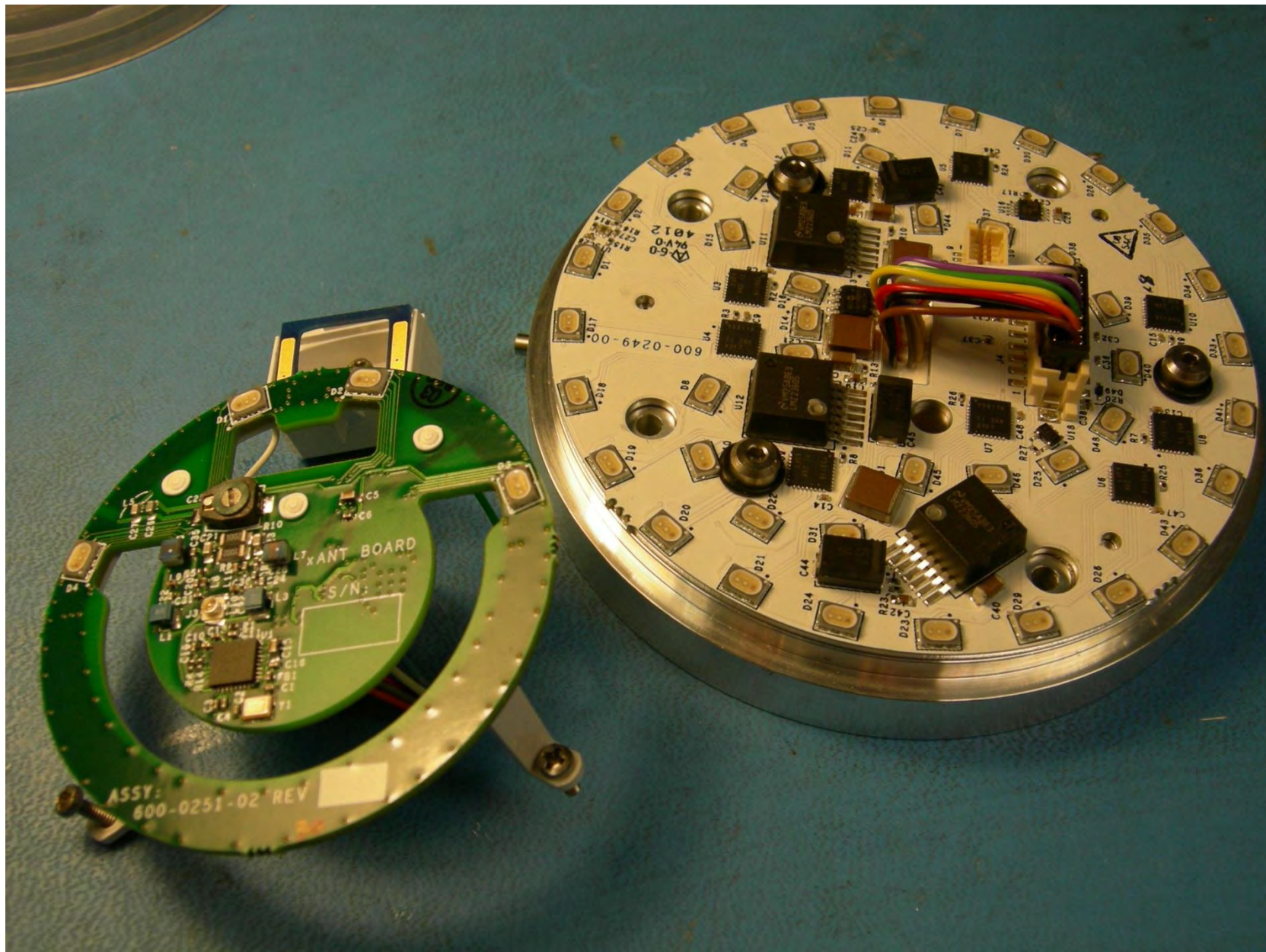
Radio IC (Analog Front-End IC)

Radio Crystal

Antenna embedded in inner layers of PCB



Antenna embedded in inner layers of PCB

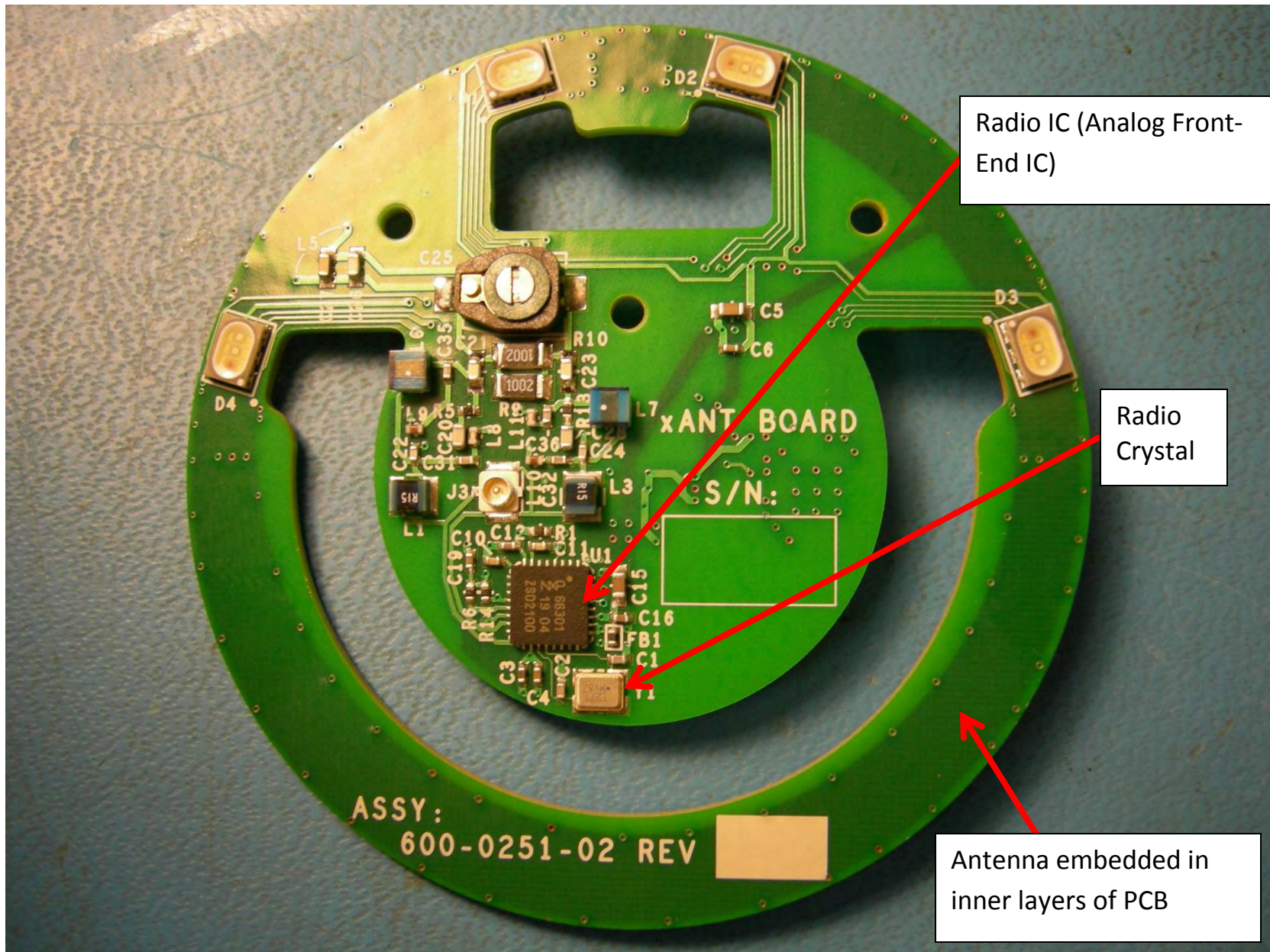


ASSY: 600-0251-02 REV

600-0249-00

ANT BOARD

S/N:



Radio IC (Analog Front-End IC)

Radio Crystal

Antenna embedded in inner layers of PCB

