

C MANHOLE SHEAVE

DESCRIPTION AND USE

CONTENTS	PAGE
1. GENERAL	1
2. DESCRIPTION	1
3. USE	2
4. SUPERSEDED TYPE	4

1. GENERAL

1.01 This section describes and outlines the use of the C Manhole Sheave. The C Manhole Sheave is used when placing and removing cable in manholes which are equipped with pulling-in irons.

1.02 This section has been rewritten to include the C Manhole Sheave and to retain the B Manhole Sheave as a superseded type.

2. DESCRIPTION

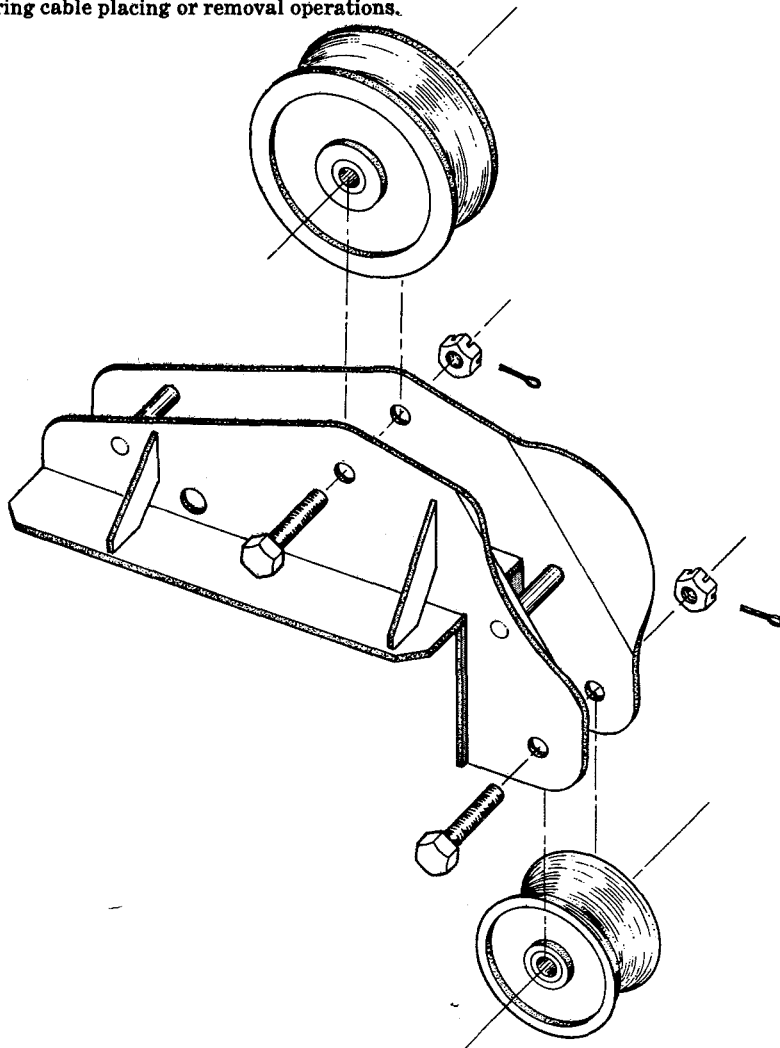
2.01 The C Manhole Sheave consists of an aluminum frame and two cast aluminum sheaves. The assembly weighs approximately 40 pounds.

2.02 A hole in each side plate of the frame permits a 1-1/4 inch digging bar to be inserted parallel to the ground. The use of a digging bar prevents the manhole sheave from being accidentally knocked into a manhole.

2.03 Fig. 1 illustrates the C Manhole Sheave.

3. USE

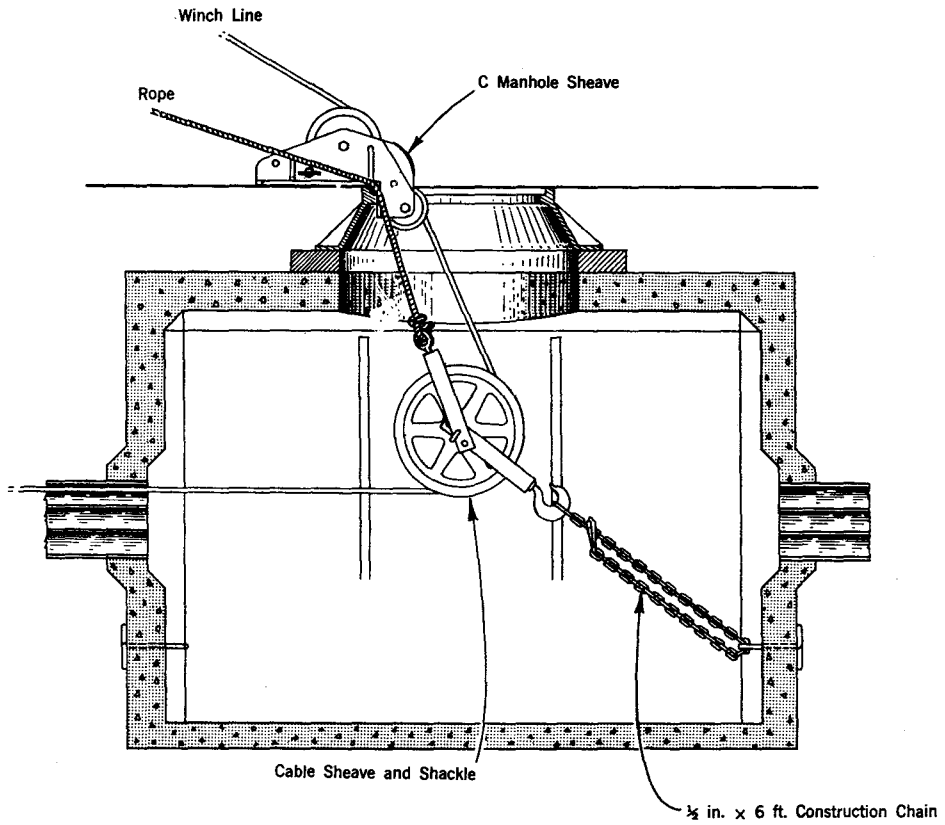
3.01 The manhole sheave is used at manholes equipped with pulling-in irons to keep the winch line or cable from rubbing on the manhole frame during cable placing or removal operations.



C MANHOLE SHEAVE

Fig. 1

3.02 Fig. 2 illustrates the use of the C Manhole Sheave



TOP VIEW

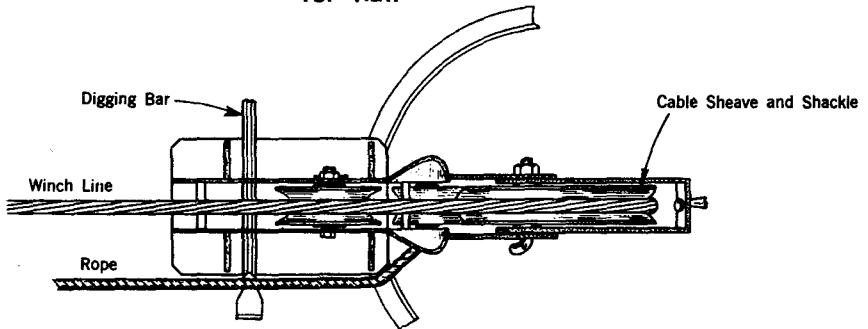
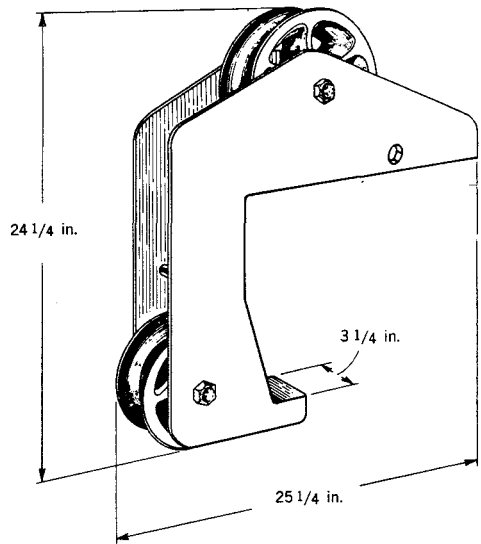


Fig. 2

4. SUPERSEDED TYPE

4.01 The Superseded B Manhole Sheave consists of an aluminum frame containing two cast aluminum sheaves and weighs approximately 35 pounds.

4.02 The Superseded B Manhole Sheave is used in the same manner as the C Manhole Sheave. Fig. 3 illustrates the B Manhole Sheave.



SUPERSEDED B MANHOLE SHEAVE

Fig. 3