

CABLE SHEAVES

1. GENERAL

1.01 This section describes the cable sheaves which are used in placing and removing under ground cable.

1.02 This section is reissued to add the C, M, and T cable sheaves. Since this is a general revision, arrows showing change have been omitted.

1.03 The B, C, L, M, S, and T cable sheaves are used as component parts of underground placing and removal equipment.

2. DESCRIPTION

2.01 The cable sheaves are made of aluminum alloy and are equipped with self-lubricating bushings.

2.02 The B, C, L, and M cable sheaves are similar in design. A representative view of these sheaves is shown in Fig. 1.

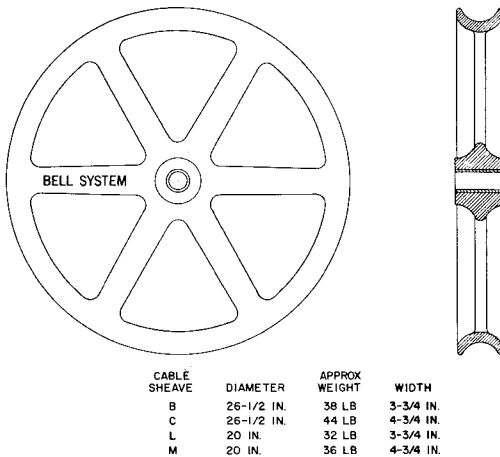
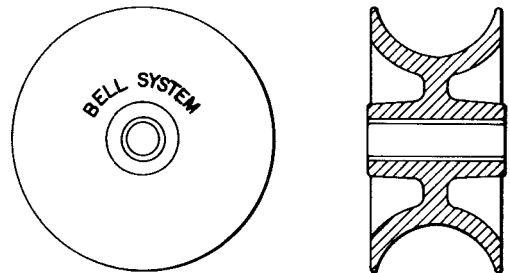


Fig. 1—B, C, L and M Cable Sheaves

2.03 The S and T cable sheaves are similar in design and are shown in Fig. 2.



CABLE SHEAVE	DIAMETER	APPROX WEIGHT	WIDTH
S	11 IN.	15 LBS	3-3/4 IN.
T	11 IN.	18 LBS	4-3/4 IN.

Fig. 2—S and T Cable Sheaves

2.04 The B and C cable sheaves can be used in manholes having 27-inch or 30-inch openings.

2.05 The L and M cable sheaves are for use in manholes having 24-inch openings and where space limitations prohibit the use of the B and C cable sheaves.

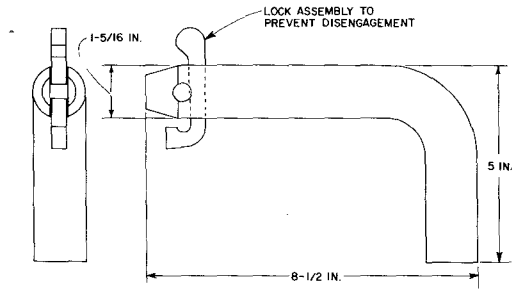
2.06 The S and T cable sheaves are generally used at the top of the sheave support above the manhole opening.

3. USE

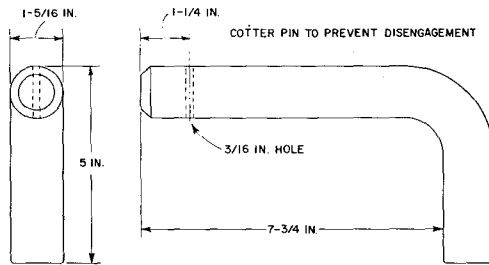
3.01 The B, L, and S cable sheaves are used in the C pulling frame, B cable sheave shackles and D underground cable pullers.

3.02 The C, M, and T cable sheaves are used in the D pulling frame, C cable sheave shackles and D underground cable pullers.

3.03 These cable sheaves are retained in place in the pulling frames by one of two types of sheave pins shown in Fig. 3.



SHEAVE PIN
APPROX WEIGHT
5 LBS



SHEAVE PIN
APPROX WEIGHT
5 LBS

Fig. 3—Sheave Pins