

SERVICE

1555B TELEPHONE SETS

1. GENERAL

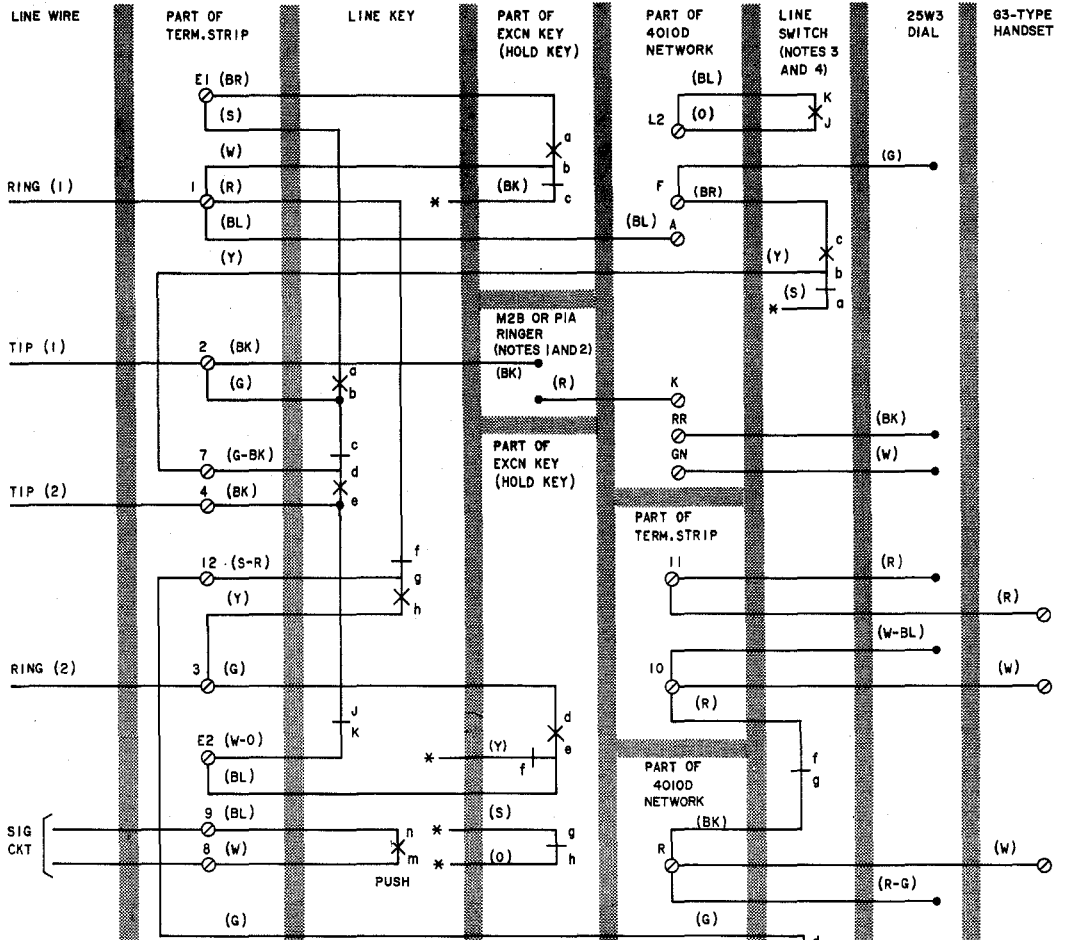
- 1.01 Reissued to add nontechnical changes to Fig. 1 and 2.

TABLE A

**POLARITY GUARD CONNECTIONS
(P-90D053 GUARD ASSEMBLY)**

LEAD	COLOR	REMOVE FROM	CONNECT TO	
		NET.	NET.	POLARITY GUARD
Line Switch	W	C		S
Dial	BK	RR		T
Polarity Guard	W G		C RR	

Note: For use when specified by local instructions for end-to-end signaling installations.

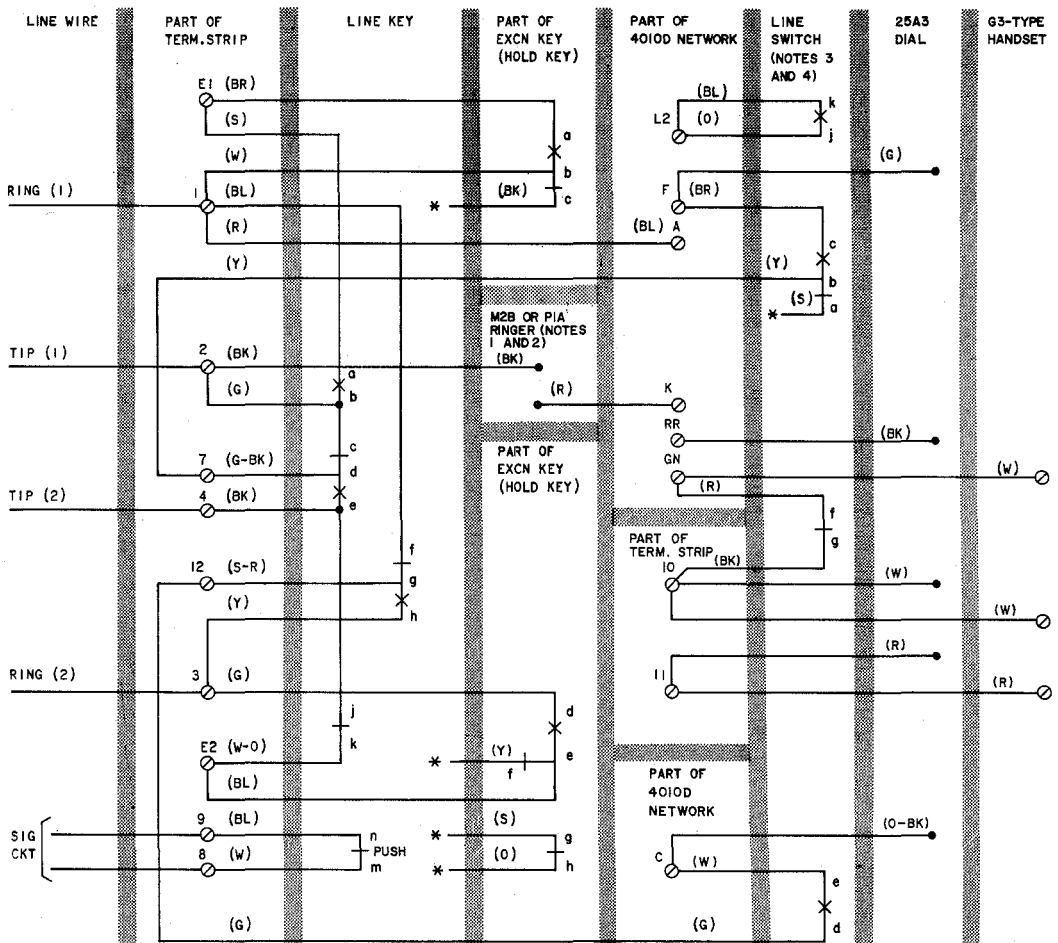


NOTES:

1. SETS ARE FACTORY WIRED TO PROVIDE BRIDGED RINGING SERVICE. RINGER CONNECTIONS PROVIDE FOR RINGING ON LINE 1. FOR RINGING ON LINE 2, CONNECT (BL) STRAP FROM A OF NETWORK AND (BK) RINGER LEAD TO TERMINALS 3 AND 4, RESPECTIVELY.
2. TO SILENCE RINGER PERMANENTLY, CONNECT (BK) RINGER LEAD TO TERMINAL K OF NETWORK.
3. LINE SWITCH SEQUENCE, HANDSET REMOVE:
bc - MAKES ob - BREAKS
de - MAKES fg - BREAKS
4. JK CONTACTS AND ASSOCIATED (BL) AND (O) LEADS ARE ON EARLY SETS ONLY.
5. SUBSCRIBER INSTRUCTION BOOKLET SIB-2430 SHIPPED LOOSE WITH SET SHOULD BE EXPLAINED AND LEFT WITH CUSTOMER FOR PROPER OPERATION OF LINE AND EXCN OR HOLD KEY.

* INSULATED AND STORED

◆Fig. 1—1555B Telephone Set, Connections With 25W3 (MD) Dial◆



NOTES:

- SETS ARE FACTORY WIRED TO PROVIDE BRIDGED RINGING SERVICE. RINGER CONNECTIONS PROVIDE FOR RINGING ON LINE 1. FOR RINGING ON LINE 2 CONNECT (BL) STRAP FROM A OF NETWORK AND (BK) RINGER LEAD TO TERMINALS 3 AND 4, RESPECTIVELY.
 - TO SILENCE RINGER PERMANENTLY, CONNECT (BK) RINGER LEAD TO TERMINAL K OF NETWORK.
 - LINE SWITCH SEQUENCE, HANDSET REMOVED:
bc - MAKES ab - BREAKS
de - MAKES fg - BREAKS
 - JK CONTACTS AND ASSOCIATED (BL) AND (O) LEADS ARE ON EARLY SETS ONLY.
 - SUBSCRIBER INSTRUCTION BOOKLET SIB-2430 SHIPPED LOOSE WITH SET SHOULD BE EXPLAINED AND LEFT WITH CUSTOMER FOR PROPER OPERATION OF LINE AND EXCN OR HOLD KEY.
- * INSULATE AND STORE.

Fig. 2—1555B Telephone Set, Connections With 25A3 (MD) Dial