

## SERVICE 500U TELEPHONE SETS

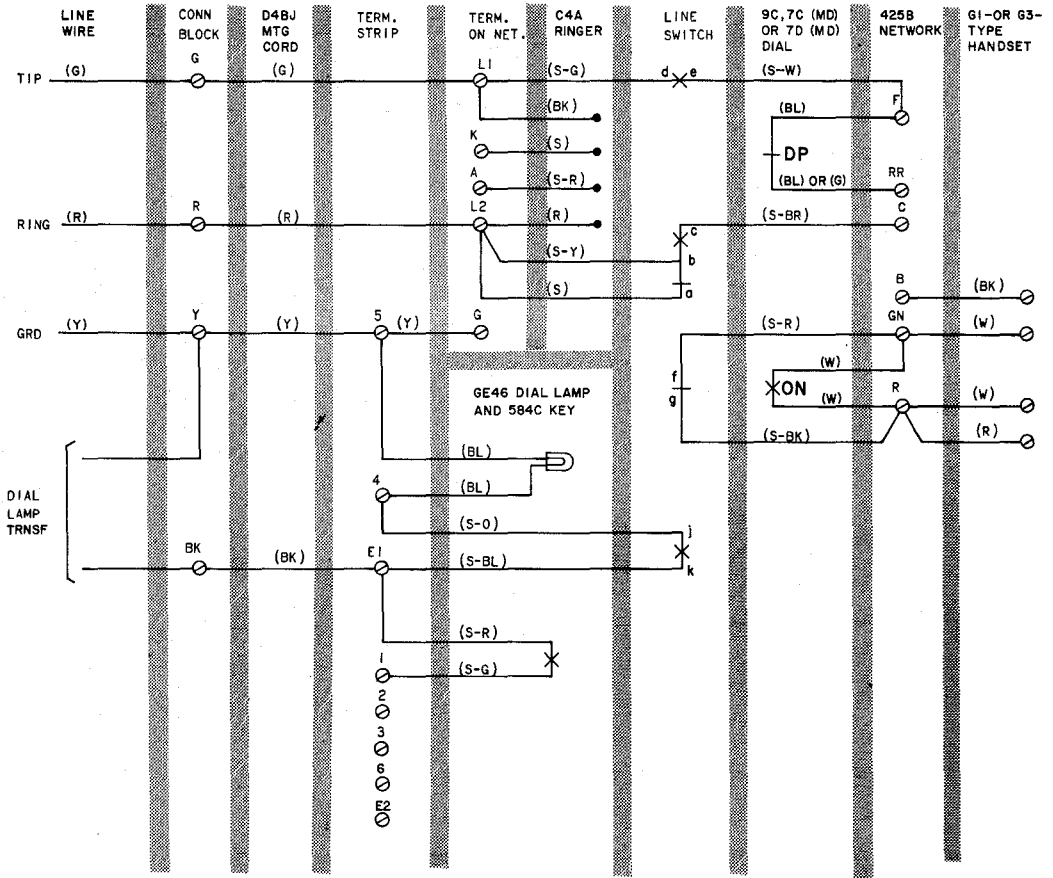
**1. GENERAL**

**1.01** Reissued to add nontechnical changes to Fig. 1.

**TABLE A**

**LINE AND RINGER CONNECTIONS**

WIRE OR LEAD	COLOR	RING PARTY	TIP PARTY FLAT RATE	TIP PARTY IDENT GRD	
				1000Ω	2650Ω
Trnsf Leads at Conn Block		Y B	Y B	Y B	Y B
Mtg Cord at Conn Block	R	R	G	G	G
	G	G	R	R	R
	Y	Y	Y	Y	Y
	BK	B	B	B	B
Mtg Cord in Set	R	L2	L2	L2	L2
	G	L1	L1	L1	L1
	Y	5	5	5	5
	BK	E1	E1	E1	E1
Ringer Leads	R	L2	L2	K	B
	BK	G	G	G	R
	S	K	K	B	K
	S-R	A	A	B	G
Line Switch	S	L2	L2	A	A



NOTES:

1. DO NOT USE 25-FOOT MOUNTING CORD BECAUSE THE ADDED RESISTANCE MAY BE TOO HIGH FOR ADEQUATE ILLUMINATION OF LAMP.
2. SET WIRED FOR BRIDGED SERVICE. REFER TO TABLE A FOR CLASSES OF SERVICE NOT SHOWN.
3. TO SILENCE RINGER PERMANENTLY:
  - FOR ALL CLASSES OF SERVICE EXCEPT TIP PARTY IDENT. INSULATE AND STORE (R) RINGER LEAD.
  - FOR 1000Ω, INSULATE AND STORE (R) RINGER LEAD.
  - FOR 2650Ω, INSULATE AND STORE (S) RINGER LEAD.
4. LINE SWITCH SEQUENCE, HANDSET REMOVED.
  - bc-MAKES
  - de-MAKES
  - ab-BREAKS
  - gf-BREAKS
  - jk-MAKES

DP-DIAL PULSE CONTACT  
ON-DIAL OFF-NORMAL CONTACT

Fig. 1—500U (MD) Telephone Set, Connections