

## SERVICE

### 525A/B TELEPHONE SETS

#### 1. GENERAL

1.01 Reissued to add nontechnical changes to Fig. 1.

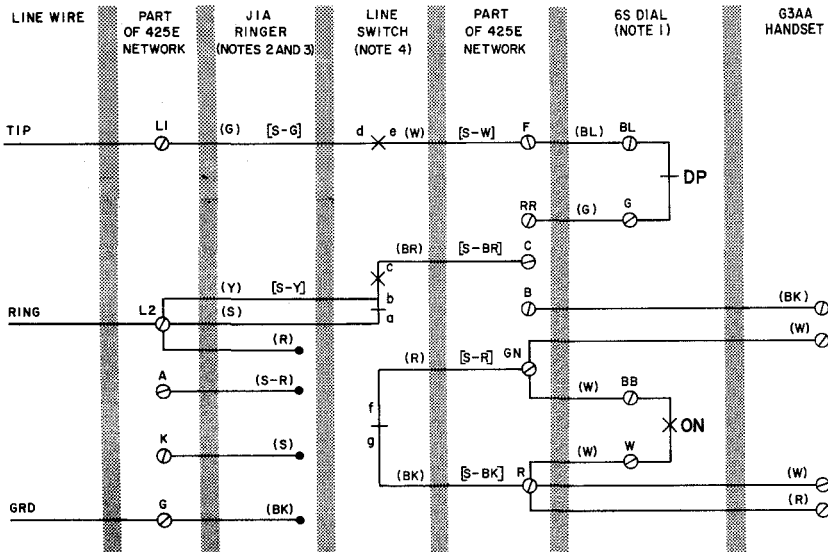


TABLE A  
LINE AND RINGER CONNECTIONS

WIRE OR LEAD	COLOR	INDIVIDUAL OR BRIDGED	TIP PARTY NO IDENT. GROUND	TIP PARTY IDENT. GROUND	
				1000 Ω	2650 Ω
RINGER LEADS	R	L2	L2	K	B
	BK	L1	G	G	B
	S	K	K	B	K
	S-R	A	A	B	G
LINE SWITCH	S	L2	L2	A	A
LINE WIRE AT NET.	TIP	G	L1	L2	L2
	RING	R	L2	L1	L1
	GRD	Y	G	G	G

NOTES:

1. FOR MANUAL SERVICE, REPLACE DIAL AND DIAL ADAPTERS WITH BOB APPARATUS BLANK. CONNECT (BL) AND (G) LEADS FROM NETWORK TO BOB APPARATUS BLANK TERMINAL W-BB AND (W) LEADS TO TERMINALS SR AND Y-BK.
  2. LINE AND RINGER CONNECTIONS SHOWN ARE FOR RING PARTY SERVICE. TABLE A LISTS OTHER CLASSES OF SERVICE.
  3. TO PERMANENTLY SILENCE RINGER: FOR BRIDGED, RING PARTY, AND TIP PARTY EXCEPT DIAL MESSAGE RATE SERVICES, TRANSFER (BK) RINGER LEAD TO K OF NETWORK. FOR 1000 Ω IDENTIFYING GROUND, TRANSFER (S-R) RINGER LEAD TO K OF NETWORK. FOR 2650 Ω IDENTIFYING GROUND, TRANSFER (BK) RINGER LEAD TO K OF NETWORK.
  4. LINE SWITCH SEQUENCE, HANDSET REMOVED:  
bc - MAKES      ab - BREAKS  
de - MAKES      fg - BREAKS
- DP - DIAL PULSE CONTACTS  
ON - DIAL OFF-NORMAL CONTACTS  
( ) - CURRENT COLOR CODE  
[ ] - MD COLOR CODE

Fig. 1—525A/B (MD) Telephone Set, Connections

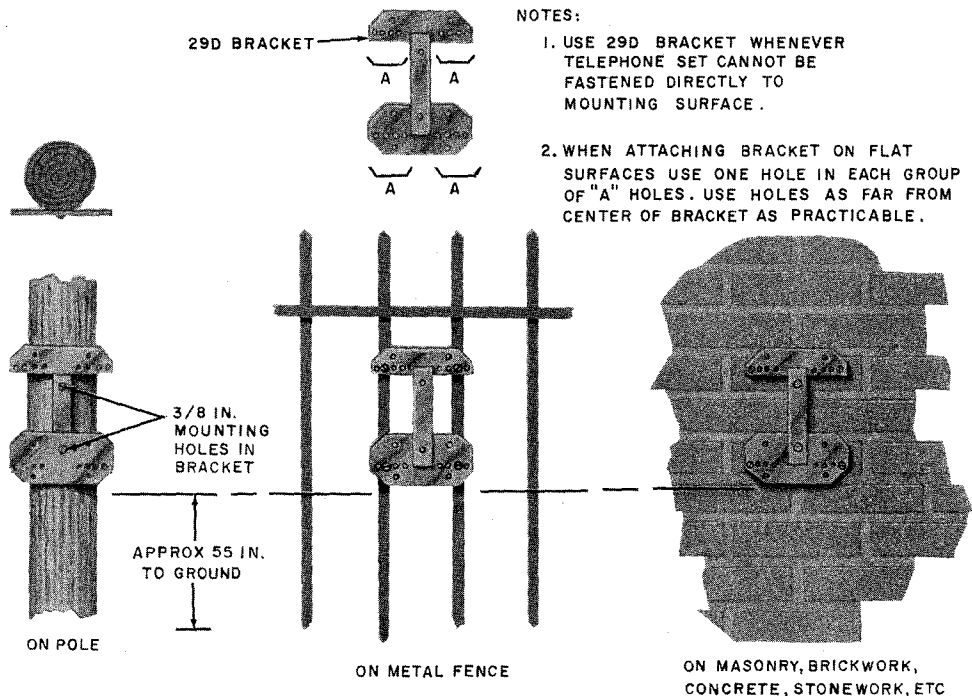


Fig. 2—29D Bracket Mounted on Various Surfaces

TABLE B  
FASTENERS FOR 29D BRACKET

SURFACE	QUAN	FASTENERS
Wood	4	1-1/2 in. No. 14 RH galvanized wood screws
Wood poles	4	2-1/2 in. or longer No. 14 RH galvanized wood screws
Wood poles (where diameter of pole is 8 inches or less)	2	5/16 x 3 in. coach screws or 2-1/2 in. or longer No. 14 RH galvanized wood screws
Finished masonry, brickwork, concrete, etc	4	5/16 x 2-1/4 in. hammer drive anchors, or approved equivalent
Solid metal — metal fences, columns, etc*	4	1 x 5/16 in. No. 18 RH brass machine screws. Drill and tap holes using 17/24 in. drill and 5/16 in. No. 18 tap
Hollow tile, corrugated metal, plaster board, etc	4	1/4 x 4 in. RH toggle bolts

\* Iron straps, bolts, etc may be used where local instructions permit. Attach telephone set securely.