

SEE ADDENDUM

**SERVICE**  
**570 TELEPHONE SETS**  
**(EMERGENCY REPORTING)**

**1. GENERAL**

**1.01** This section provides connection information for the 570 (emergency reporting) telephone sets.

**1.02** Reissued to:

- Show all 570-type telephone set codes MD
- Show 8L, 8M, 8N, and 8P apparatus units MD
- Revised all apparatus unit connection drawings
- Add Table A to convert available 8J and 8K apparatus units to obtain equivalent MD units

- Add connections for 8J and 8K apparatus units manufactured after September 30, 1971 (Fig. 6)

**1.03** The 8J and 8K apparatus unit codes have been retained. To obtain a 570 telephone set the appropriate 8J or 8K apparatus unit and 111-type apparatus box must be ordered separately. For ordering and reference information refer to Section 502-501-119.

**1.04** Table A describes modifications to obtain the equivalent of the MD apparatus units from the available 8J or 8K units.

**1.05** Table B describes types of fasteners for 29-type apparatus brackets.

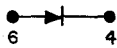
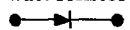
**1.06** Fig. 9 shows methods of mounting 29-type bracket on various surfaces.

♦ TABLE A ♦

## MODIFICATION OF 8J AND 8K APPARATUS UNITS TO OBTAIN EQUIVALENT MD UNITS

| APPARATUS UNIT | DIRECT LINE SYSTEM                  |                                    | CONCENTRATOR SYSTEM        |                         |                            |                         |
|----------------|-------------------------------------|------------------------------------|----------------------------|-------------------------|----------------------------|-------------------------|
|                | WITHOUT SELECTIVE ROUTING           | WITH SELECTIVE ROUTING             | WITHOUT SELECTIVE ROUTING  |                         | WITH SELECTIVE ROUTING     |                         |
|                | WITH OR WITHOUT LONG LINES CIRCUITS | WITH OR WITHOUT LONG LINES CIRCUIT | WITHOUT LONG LINES CIRCUIT | WITH LONG LINES CIRCUIT | WITHOUT LONG LINES CIRCUIT | WITH LONG LINES CIRCUIT |
| 8J             | Note 1 or 2                         |                                    | Notes 1, 3                 | Note 1                  |                            |                         |
| 8K             |                                     | Note 4 or 5                        |                            |                         | Notes 4,6,7, 8,3           | Notes 4,6,7, 8          |

## Notes:

- 8J: Factory wiring (X option)
- 8J: Y option (for Unigauge Outside Plant)
- Replace 7300  $\Omega$  resistor with 446F diode, connecting anode to terminal 6, TB1. 
- 8K: Factory wiring (X option)
- 8K: Y option (for Unigauge Outside Plant)
- Remove (O) lead from terminal 12 and connect to terminal 3 on TB1.
- Remove (W-O) strap from terminal 10 and connect to terminal 12 on TB1.
- Connect parallel combination of 47,000  $\Omega$  1 watt resistor and 400E diode between terminals 2 and 3 on TB1 with anode of diode on terminal 3. 

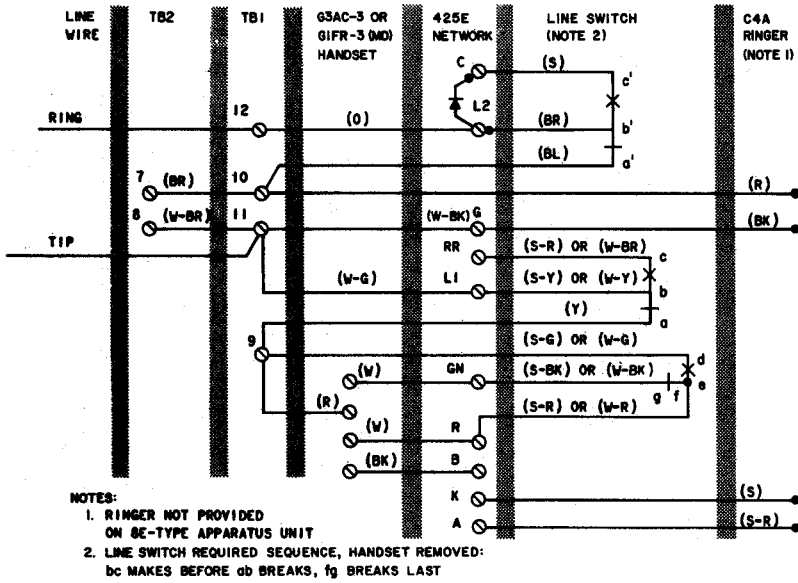


Fig. 1—8A (MD) and 8E (MD) Apparatus Units, Connections

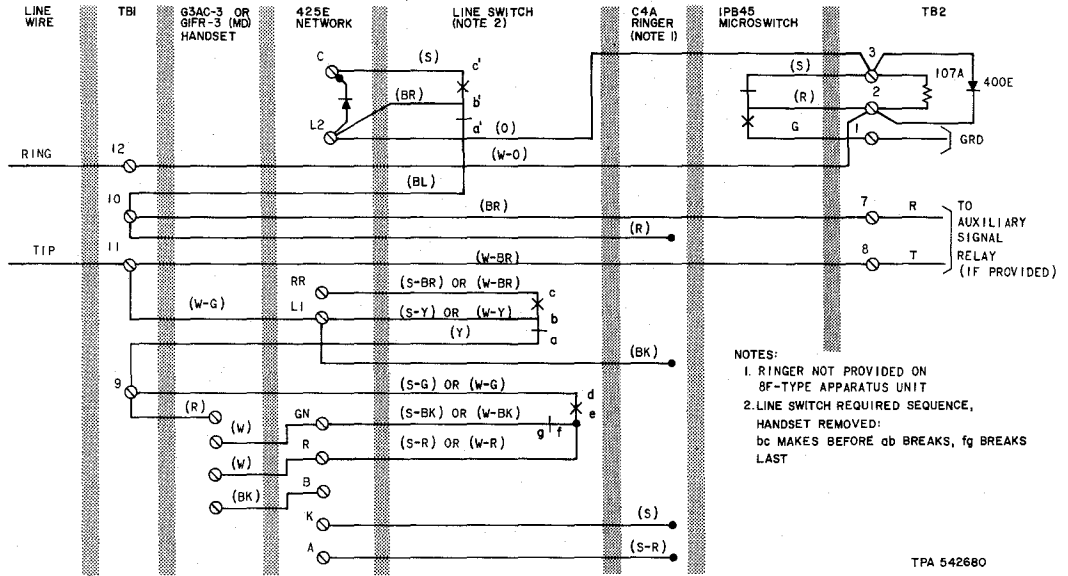


Fig. 2—8B (MD) and 8F (MD) Apparatus Units, Connections

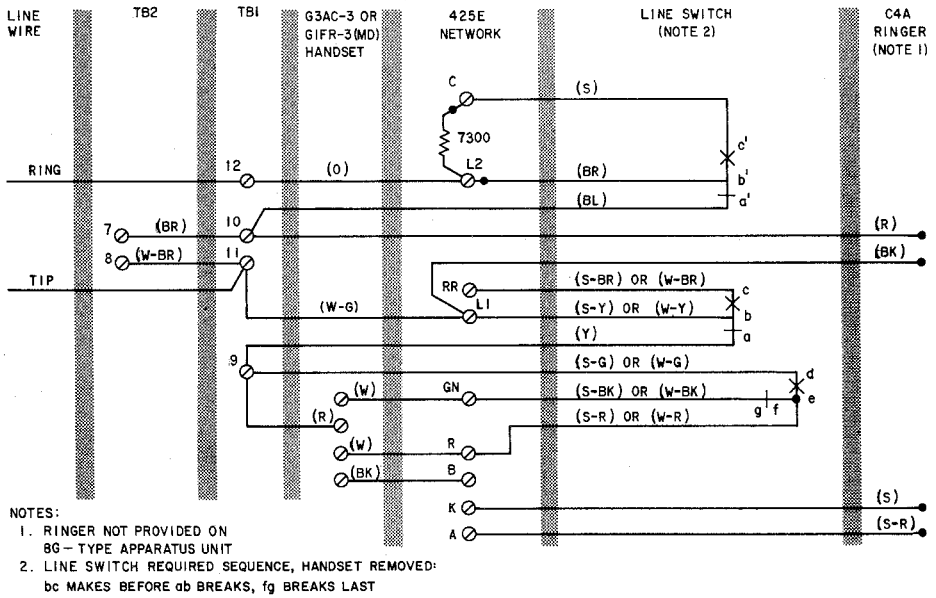
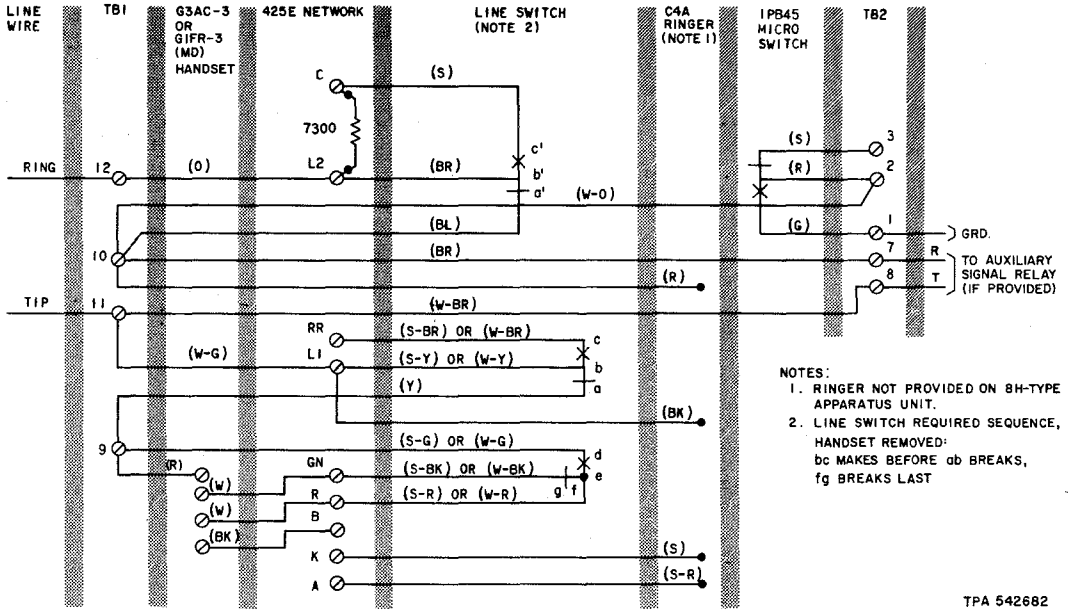


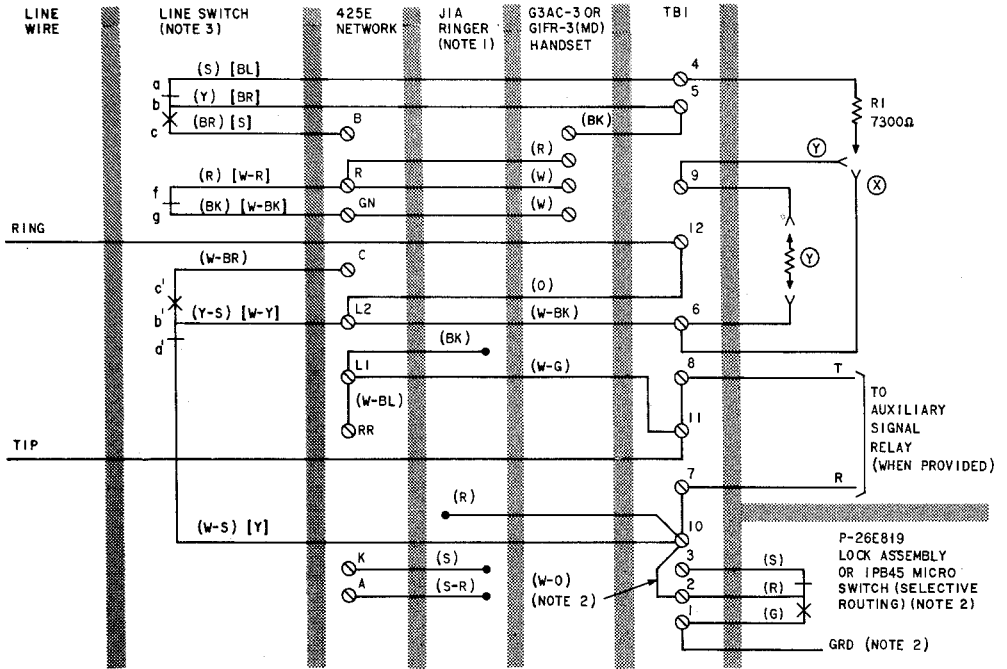
Fig. 3—8C (MD) and 8G (MD) Apparatus Units, Connections



- NOTES:
1. RINGER NOT PROVIDED ON 8H-TYPE APPARATUS UNIT.
  2. LINE SWITCH REQUIRED SEQUENCE, HANDSET REMOVED: bc MAKES BEFORE ab BREAKS, fg BREAKS LAST

TPA 542682

Fig. 4—8D (MD) and 8H (MD) Apparatus Units, Connections



NOTES:

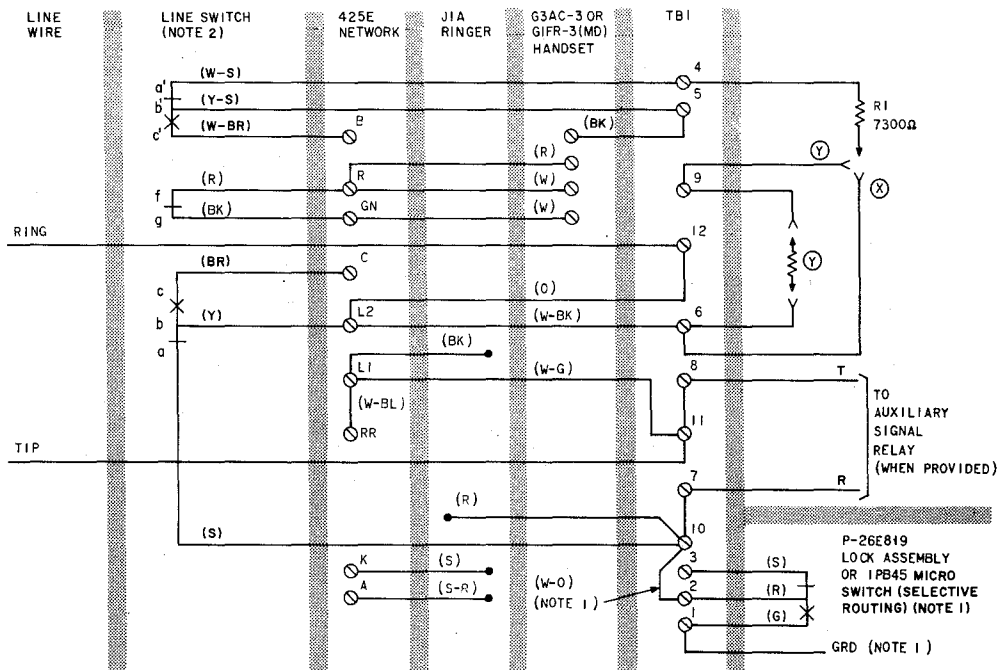
1. RINGER NOT PROVIDED IN 8N- AND 8P-TYPE APPARATUS UNIT.
  2. NOT PROVIDED ON 8J- AND 8N-TYPE APPARATUS UNIT.
- (X) - FACTORY WIRING  
 (Y) - UNIGAGE OUTSIDE PLANT  
 (KS-14603L2C 3700 OHM) RESISTOR  
 ( ) - CURRENT COLOR CODE  
 [ ] - MD COLOR CODE

3. LINE SWITCH SEQUENCE, HANDSET REMOVED:

- a' b' - BREAKS
- c b - MAKES
- a b - BREAKS
- c' b' - MAKES
- g f - BREAKS

TPA 542634

Fig. 5—8J, 8K, 8N (MD) and 8P (MD) Apparatus Units, Early Connections (MFD prior to Sept. 30, 1971)



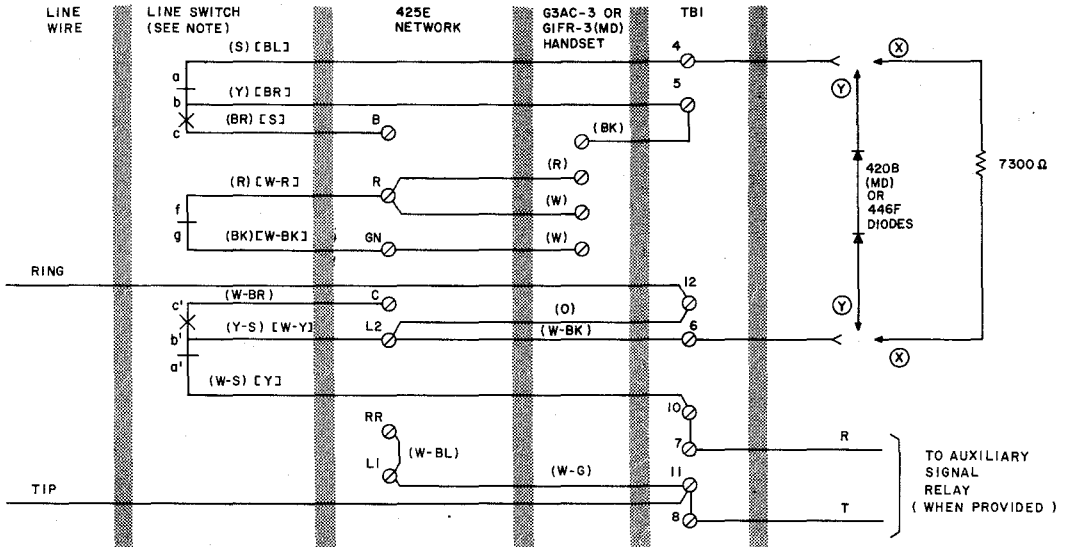
NOTES:

1. NOT PROVIDED ON 8J APPARATUS UNIT.
  2. LINE SWITCH REQUIRED SEQUENCE, HANDSET REMOVED:
- (X) - FACTORY WIRING  
 (Y) - UNIGAGE OUTSIDE PLANT  
 (KS-14603L2C 3700 OHM) RESISTOR
- cb AND c'b' MAKE BEFORE ab BREAKS,  
 fg BREAKS LAST.

TPA 563585

Fig. 6—8J and 8K Apparatus Units, Current Connections (MFD after Sept. 30, 1971)



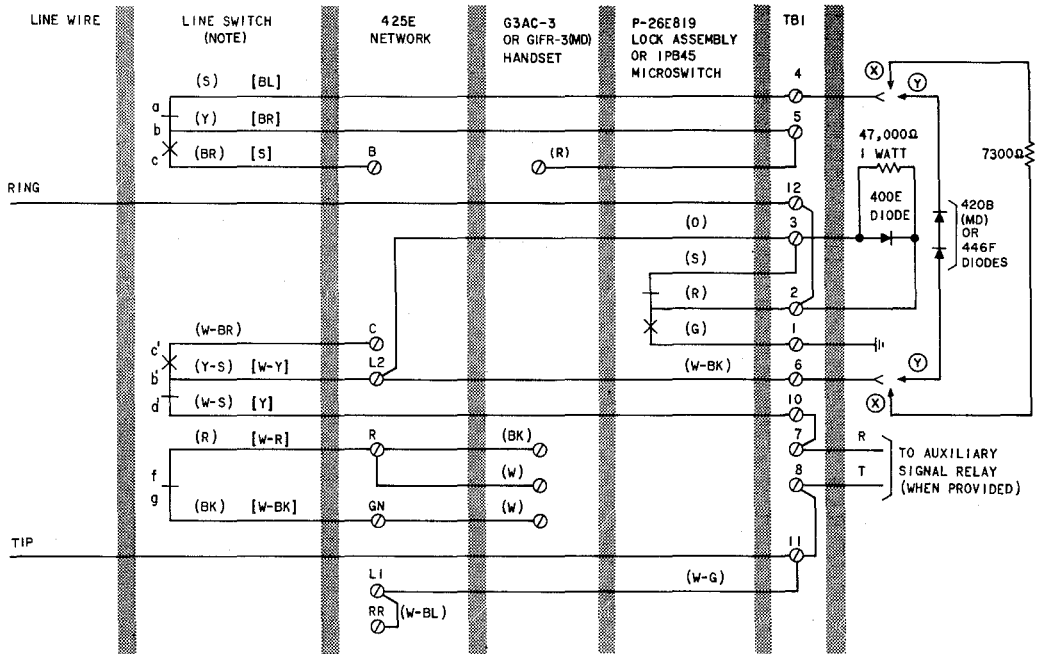


- ( ) - CURRENT COLOR CODE
- [ ] - MD COLOR CODE
- (X) - WITH LONG LINE CIRCUIT AND CONCENTRATOR ARRANGEMENT
- (Y) - WITHOUT LONG LINE CIRCUIT

NOTE:  
 LINE SWITCH SEQUENCE, HANDSET REMOVED:  
 a'b' - BREAKS      b'c' - MAKES  
 c b - MAKES      fg - BREAKS  
 a b - BREAKS

TPA 542637

Fig. 7—8L (MD) Apparatus Unit, Connections



NOTE:  
 LINE SWITCH SEQUENCE, HANDSET REMOVED:  
 a'b' - BREAKS      b'c' - MAKES  
 cb - MAKES      fg - BREAKS  
 ab - BREAKS

( ) - CURRENT COLOR CODE  
 [ ] - MD COLOR CODE  
 (X) - WITH LONG LINE CIRCUIT AND CONCENTRATOR ARRANGEMENT  
 (Y) - WITHOUT LONG LINE CIRCUIT

Fig. 8—8M (MD) Apparatus Unit, Connections

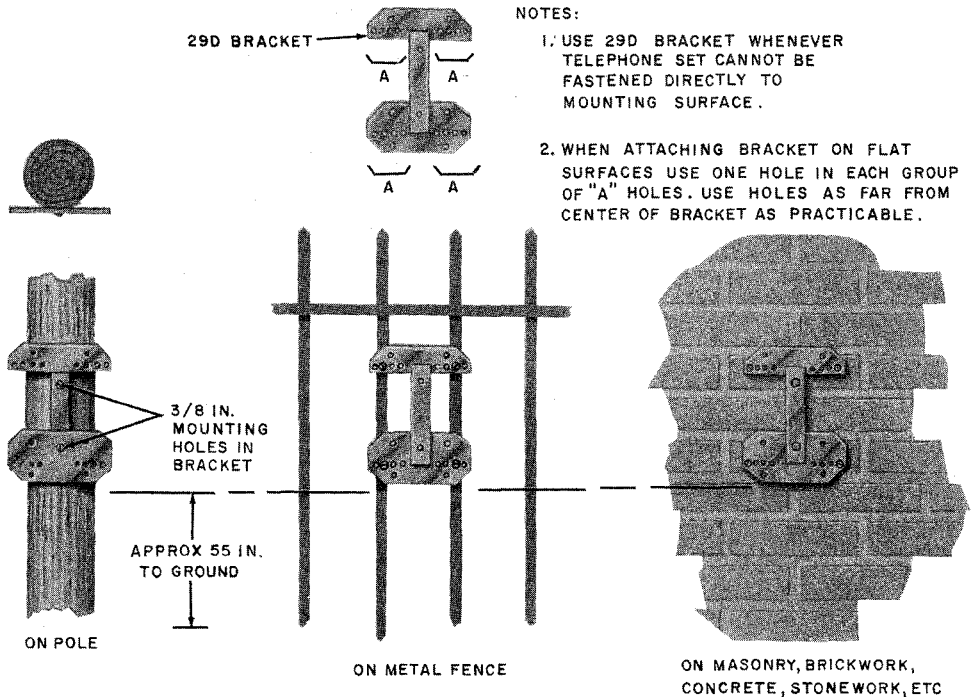


Fig. 9—29-Type Bracket Mounted on Various Surfaces

TABLE B  
FASTENERS FOR 29-TYPE APPARATUS BRACKETS

| SURFACE   | QUAN | FASTENERS  |
|---|------|--|
| Wood  | 4    | 1-1/2 in. No. 14 RH galvanized wood screws   |
| Wood poles  | 4    | 2-1/2 in. or longer No. 14 RH galvanized wood screws   |
| Wood poles (where diameter of pole is 8 inches or less) | 2    | 5/16 x 3 in. coach screws or 2-1/2 in. or longer No. 14 RH galvanized wood screws                              |
| Finished masonry, brickwork, concrete, etc              | 4    | 5/16 x 2-1/4 in. hammer drive anchors, or approved equivalent  |
| Solid metal — metal fences, columns, etc*               | 4    | 1 x 5/16 in. No. 18 RH brass machine screws. Drill and tap holes using 17/24 in. drill and 5/16 in. No. 18 tap |
| Hollow tile, corrugated metal, plaster board, etc       | 4    | 1/4 x 4 in. RH toggle bolts  |

\* Iron straps, bolts, etc may be used where local instructions permit. Attach telephone set securely.

**SERVICE**  
**570 TELEPHONE SETS**  
**(EMERGENCY REPORTING)**

**1. GENERAL**

**1.001** This addendum supplements Section 502-580-455, Issue 3.

**1.002** This addendum is issued to:

- Rate the 8J and 8K apparatus units MD, and are replaced by the 570J and 570K telephone set bases, respectively.
- Substitute appropriate telephone set bases for all references to the two apparatus units MD in Table A.
- Add a D-180469 Kit of Parts for upgrading MD apparatus units.

**1.003** The 570J and 570K telephone set bases are direct replacement for the 8J and 8K

apparatus units MD. The codes and title were changed to facilitate the 570-type telephone set to the modular concept. A D-180469 Kit of Parts is provided for conversion of all 8-type apparatus units MD to the modular concept.

**1.004** The following, with appropriate kit of part are recommended substitutes:

| <b>New</b> | <b>Old</b> |
|------------|------------|
| 570J       | 8L (MD)    |
| 570J       | 8N (MD)    |
| 570K       | 8M (MD)    |
| 570K       | 8P (MD)    |