

**SERVICE**  
**COIN COLLECTORS, SUBSCRIBER SET REQUIRED**  
**190 SERIES**

**1. GENERAL**

**1.01** This section provides connection information for the 190-type coin collectors and associated subscriber sets.

**1.02** This section is reissued to:

- Add note required when 685B subscriber set is used with coin collector
- Incorporate several minor changes in drawings
- Delete connection information on 685A and B subscriber sets
- Rearrange drawings to be consistent with associated practices

**1.03** Refer to Sections 506-215-403 and 506-215-404 for connection information pertaining to the 685A and B subscriber sets.

**2. CONNECTION INDEX**

Fig. 1—191, 195, 196, 197 (C, D, G, and H) Coin Collectors with 531A; 534DE, DF; 584DE, DF; or 687A Subscriber Sets—Coin First, Connections

Fig. 2—191, 195, 196, 197 (CS, DS, GS, and HS) Coin Collectors with 531A; 534DE, DF; 584DE, DF; or 687A Subscriber Sets—Coin First, Connections

Fig. 3—191, 195, 196, 197 (CT, DT, GT, and HT) Coin Collectors with 531A; 534DE, DF; 584DE, DF; or 687A Subscriber Sets—Coin First, Connections

Fig. 4—191, 195, 196, 197 (CN, DN, GN, and HN) Coin Collectors—Coin First, Connections

Fig. 5—191, 195, 196, 197 (CN, DN, GN, and HN) Coin Collector—Coin First, Connections

Fig. 6—191, 195, 196, 197 (CNS, DNS, GNS, and HNS) Coin Collector—Coin First, Connections

Fig. 7—191, 195, 196, 197 (CNS, DNS, GNS, and HNS) Coin Collectors—Coin First, Connections

Fig. 8—191, 195, 196, 197 (CNT, DNT, GNT, and HNT) Coin Collectors—Coin First, Connections

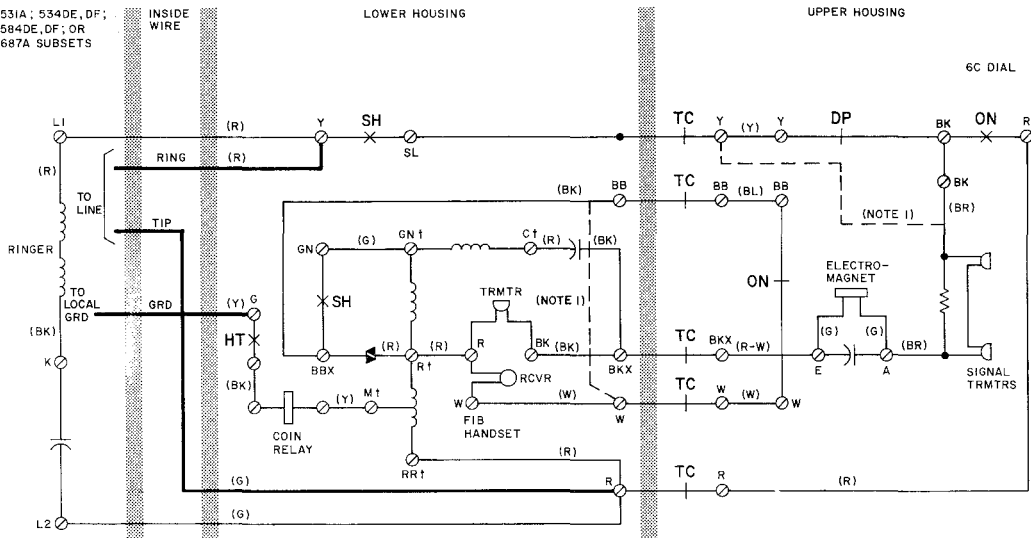
Fig. 9—191, 195, 196, 197, (CNT, DNT, GNT, and HNT) Coin Collector—Coin First, Connections

Fig. 10—193G, H and 198G, H Coin Collectors with 531A; 534DE, DF; 584DE, DF; or 687A Subscriber Sets—Postpay, Connections

Fig. 11—193GN, HN and 198GN, HN Coin Collectors—Postpay, Connections

SECTION 506-330-404

531A; 534DE, DF;  
584DE, DF; OR  
687A SUBSETS

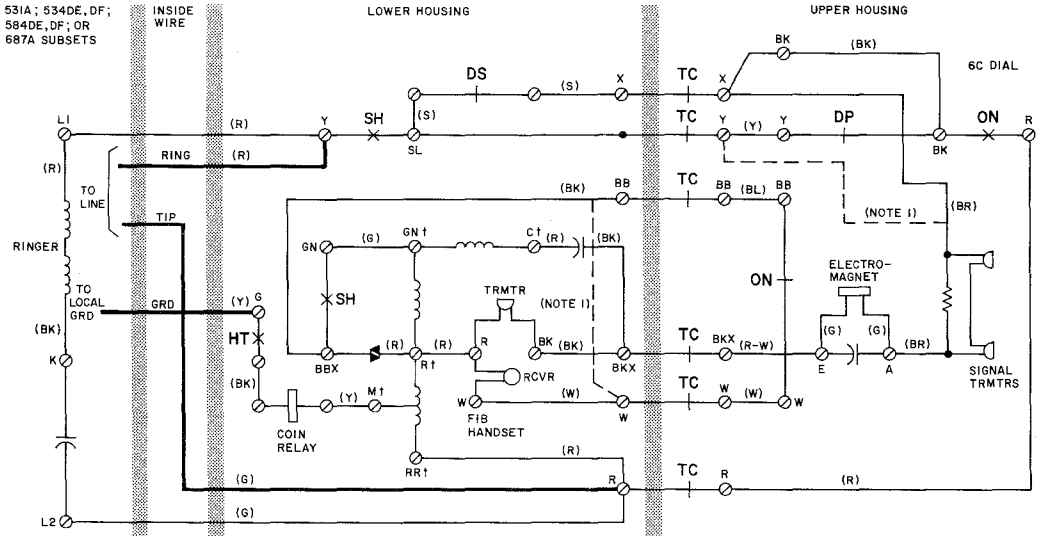


NOTES:

1. DOTTED LINES SHOW SETS WITH MANUAL CONNECTIONS [191, 195, 196, 197 (C AND D)] DIAL IS REPLACED WITH 50C APPARATUS BLANK.
  2. WHEN A 6IR FILTER IS REQUIRED FOR RADIO FREQUENCY SUPPRESSION, MOVE (Y) DIAL LEAD FROM Y UPPER-HOUSING CONTACT SPRING TO FILTER BRACKET TERM., CONNECT (Y) FILTER LEAD TO FILTER BRACKET TERM., CONNECT (BK) FILTER LEAD TO BK UPPER HOUSING CONTACT, AND CONNECT (R) FILTER LEAD TO Y UPPER HOUSING CONTACT.
- † 101B INDUCTION COIL TERMINALS

- DP - DIAL PULSE CONTACTS  
HT - HOPPER TRIGGER CONTACTS  
SH - SWITCH HOOK CONTACTS  
ON - OFF NORMAL CONTACTS  
TC - TRANSFER CONTACTS  
DS - DIAL SHORTING CONTACTS

Fig. 1—191, 195, 196, 197 (C, D, G, and H) Coin Collectors with 531A; 534DE, DF; 584DE, DF; or 687A Subscriber Sets—Coin First, Connections



NOTES:

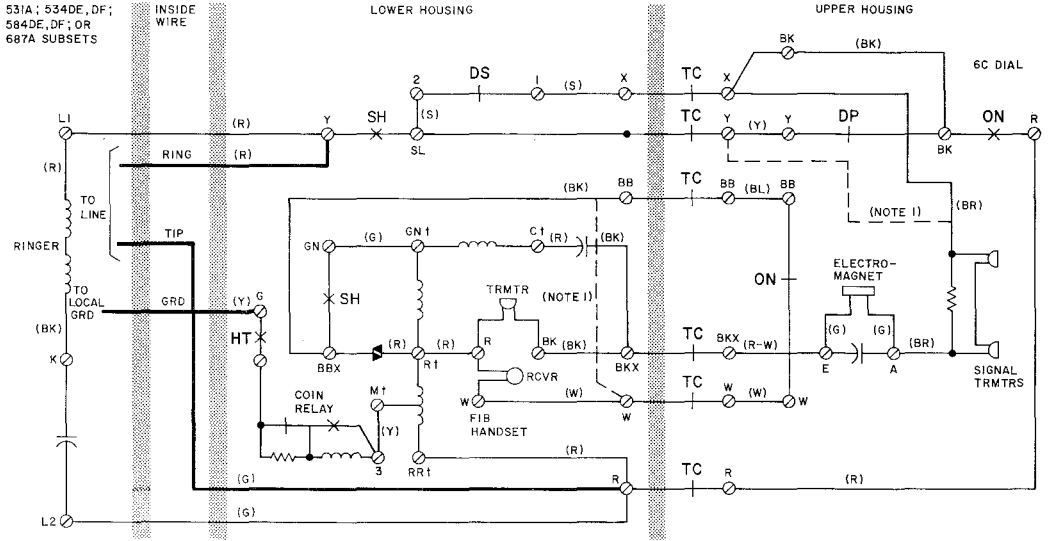
1. DOTTED LINES SHOW SETS WITH MANUAL CONNECTIONS [191,195,196,197 (CS AND DS)] DIAL IS REPLACED WITH 50C APPARATUS BLANK.
2. WHEN A 6IR FILTER IS REQUIRED FOR RADIO FREQUENCY SUPPRESSION, MOVE (Y) DIAL LEAD FROM Y UPPER-HOUSING CONTACT SPRING TO FILTER BRACKET TERM., CONNECT (Y) FILTER LEAD TO FILTER BRACKET TERM., CONNECT (BK) FILTER LEAD TO BK UPPER HOUSING CONTACT, AND CONNECT (R) FILTER LEAD TO Y UPPER HOUSING CONTACT.

† 101B INDUCTION COIL TERMINALS

- DP -DIAL PULSE CONTACTS  
 HT -HOPPER TRIGGER CONTACTS  
 SH -SWITCH HOOK CONTACTS  
 ON -OFF NORMAL CONTACTS  
 TC -TRANSFER CONTACTS  
 DS -DIAL SHORTING CONTACTS

Fig. 2—191, 195, 196, 197 (CS, DS, GS, and HS) Coin Collectors with 531A; 534DE, DF; 584DE, DF; or 687A Subscriber Sets—Coin First, Connections

SECTION 506-330-404



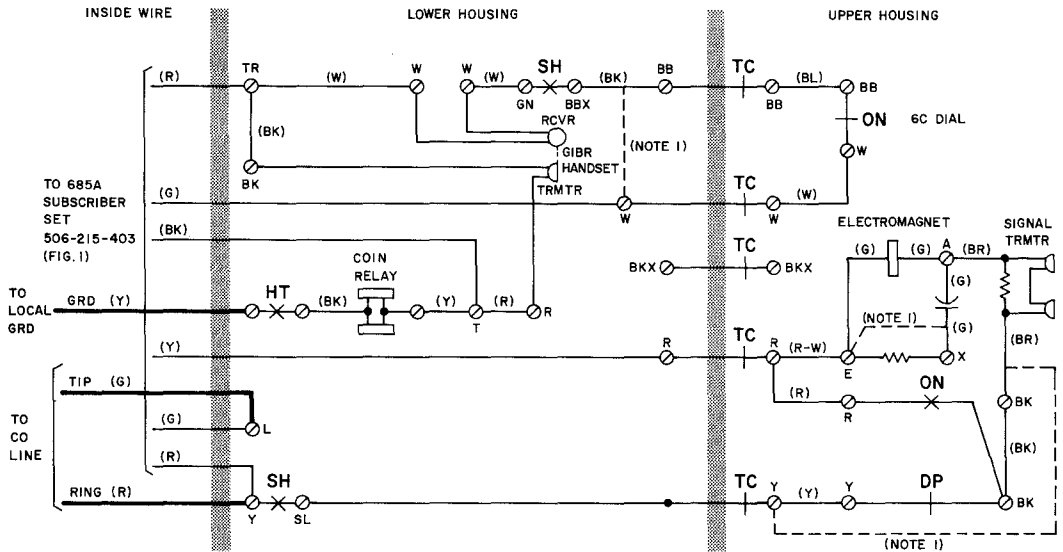
NOTES:

1. DOTTED LINES SHOW SETS WITH MANUAL CONNECTIONS [191, 195, 196, 197 (CT AND DT)] DIAL IS REPLACED WITH 50C APPARATUS BLANK.
2. WHEN A 61R FILTER IS REQUIRED FOR RADIO FREQUENCY SUPPRESSION, MOVE (Y) DIAL LEAD FROM Y UPPER-HOUSING CONTACT SPRING TO FILTER BRACKET TERM., CONNECT (Y) FILTER LEAD TO FILTER BRACKET TERM., CONNECT (BK) FILTER LEAD TO BK UPPER HOUSING CONTACT, AND CONNECT (R) FILTER LEAD TO Y UPPER HOUSING CONTACT.

† 101B INDUCTION COIL TERMINALS

- DP-DIAL PULSE CONTACTS  
HT-HOPPER TRIGGER CONTACTS  
SH-SWITCH HOOK CONTACTS  
ON-OFF NORMAL CONTACTS  
TC-TRANSFER CONTACTS  
DS-DIAL SHORTING CONTACTS

Fig. 3—191, 195, 196, 197 (CT, DT, GT, and HT) Coin Collectors with 531A; 534DE, DF; 584DE, DF; or 687A Subscriber Sets—Coin First, Connections

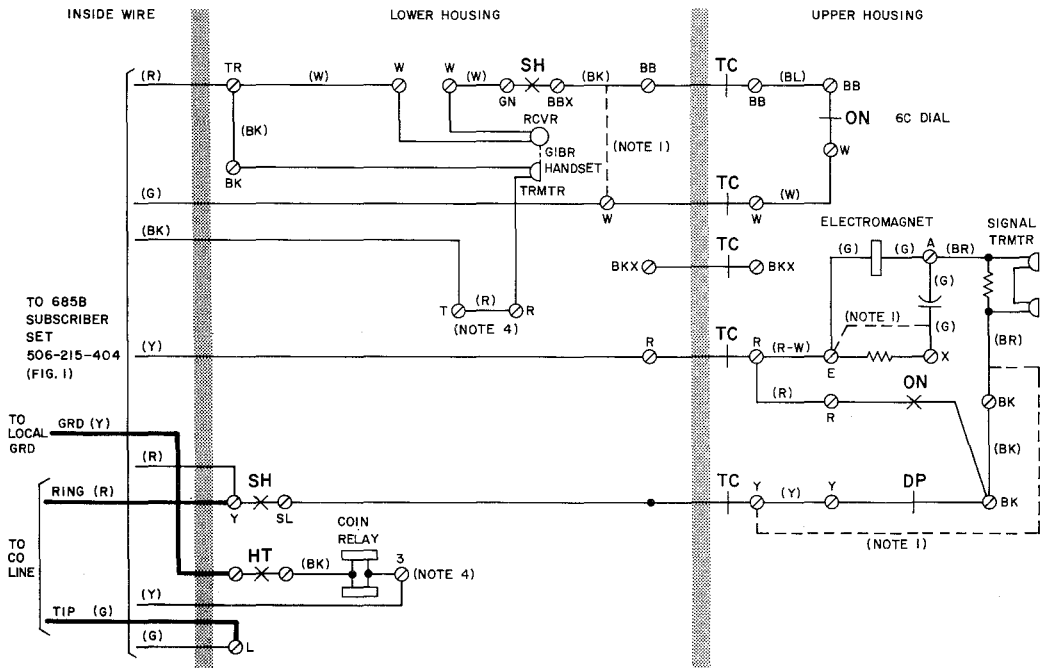


NOTES:

1. DOTTED LINES SHOW SETS WITH MANUAL CONNECTIONS {191, 195, 196, 197 (CN AND DN)} DIAL IS REPLACED WITH 50C APPARATUS BLANK.
2. WHEN A 6IR FILTER IS REQUIRED FOR RADIO FREQUENCY SUPPRESSION, MOVE (Y) DIAL LEAD FROM Y UPPER HOUSING CONTACT SPRING TO FILTER BRACKET TERM., CONNECT (Y) FILTER LEAD TO FILTER BRACKET TERM., CONNECT (BK) FILTER LEAD TO BK UPPER HOUSING CONTACT, AND CONNECT (R) FILTER LEAD TO Y UPPER HOUSING CONTACT.
3. WHEN COIN COLLECTOR IS INSTALLED IN A KS-14611, LIST 2 BOOTH OR A KS-16705 MOUNTING, THE TIP AND RING LINE TERMINATIONS ARE CONNECTED DIRECTLY TO THE SUBSCRIBER SET.

- DP - DIAL PULSE CONTACTS
- HT - HOPPER TRIGGER CONTACTS
- SH - SWITCHHOOK CONTACTS
- ON - OFF NORMAL CONTACTS
- TC - TRANSFER CONTACTS

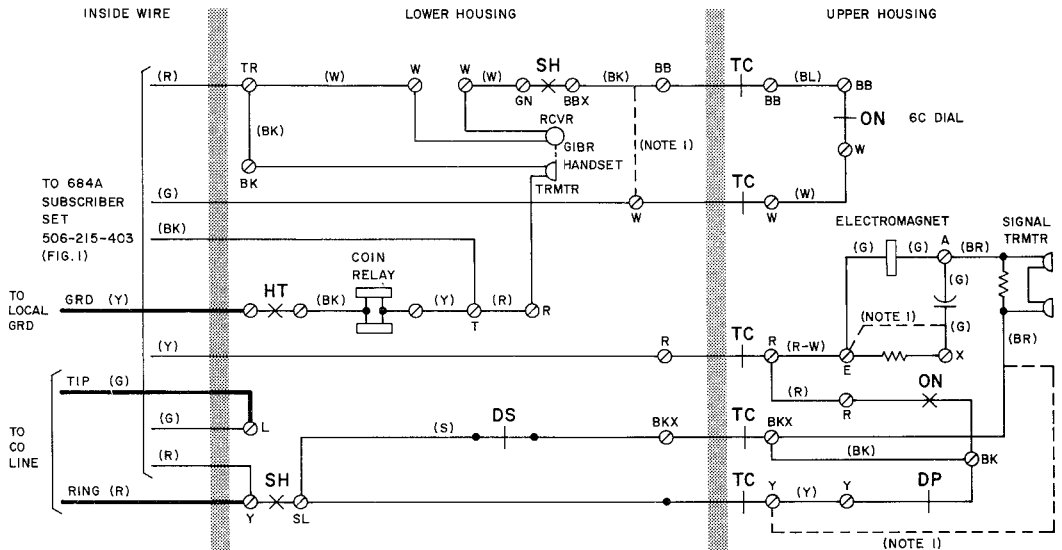
Fig. 4—191, 195, 196, 197 (CN, DN, GN, and HN) Coin Collectors—Coin First, Connections



- NOTES:
1. DOTTED LINES SHOW SETS WITH MANUAL CONNECTIONS [191, 195, 196, 197 (CN AND DN)] DIAL IS REPLACED WITH 50C APPARATUS BLANK.
  2. WHEN A 6IR FILTER IS REQUIRED FOR RADIO FREQUENCY SUPPRESSION, MOVE (Y) DIAL LEAD FROM Y UPPER HOUSING CONTACT SPRING TO FILTER BRACKET TERM., CONNECT (Y) FILTER LEAD TO FILTER BRACKET TERM., CONNECT (BK) FILTER LEAD TO BK UPPER HOUSING CONTACT, AND CONNECT (R) FILTER LEAD TO Y UPPER HOUSING CONTACT.
  3. WHEN COIN COLLECTOR IS INSTALLED IN A KS-14611, LIST 2 BOOTH OR A KS-16705 MOUNTING, THE TIP AND RING LINE TERMINATIONS ARE CONNECTED DIRECTLY TO THE SUBSCRIBER SET.
  4. REMOVE THE (Y) STRAP BETWEEN TERMINALS 3 AND T WHEN USED WITH 685B SUBSCRIBER SET.

- DP - DIAL PULSE CONTACTS
- HT - HOPPER TRIGGER CONTACTS
- SH - SWITCHHOOK CONTACTS
- ON - OFF NORMAL CONTACTS
- TC - TRANSFER CONTACTS

Fig. 5—191, 195, 196, 197, (CN, DN, GN, and HN) Coin Collector—Coin First, Connections



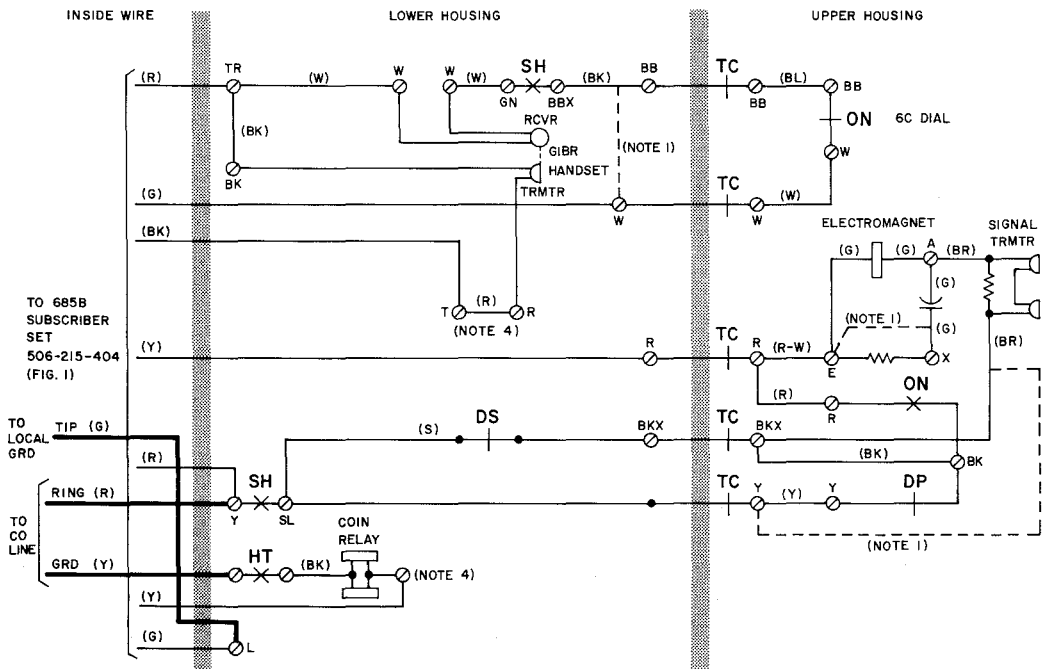
## NOTES:

1. DOTTED LINES SHOW SETS WITH MANUAL CONNECTIONS  
[191, 195, 196, 197, (CNS AND DNS)] DIAL IS REPLACED WITH 50C APPARATUS BLANK.
2. WHEN A 6IR FILTER IS REQUIRED FOR RADIO FREQUENCY SUPPRESSION, MOVE (Y) DIAL LEAD FROM Y UPPER HOUSING CONTACT SPRING TO FILTER BRACKET TERM., CONNECT (Y) FILTER LEAD TO FILTER BRACKET TERM., CONNECT (BK) FILTER LEAD TO BK UPPER HOUSING CONTACT, AND CONNECT (R) FILTER LEAD TO Y UPPER HOUSING CONTACT.
3. WHEN COIN COLLECTOR IS INSTALLED IN A KS-14811, LIST 2 BOOTH OR A KS-16705 MOUNTING, THE TIP AND RING LINE TERMINATIONS ARE CONNECTED DIRECTLY TO THE SUBSCRIBER SET.

DP - DIAL PULSE CONTACTS  
HT - HOPPER TRIGGER CONTACTS  
SH - SWITCHHOOK CONTACTS  
ON - OFF NORMAL CONTACTS  
TC - TRANSFER CONTACTS  
DS - DIAL SHORTING CONTACTS

Fig. 6—191, 195, 196, 197 (CNS, DNS, GNS, and HNS) Coin Collector—Coin First, Connections

**SECTION 506-330-404**



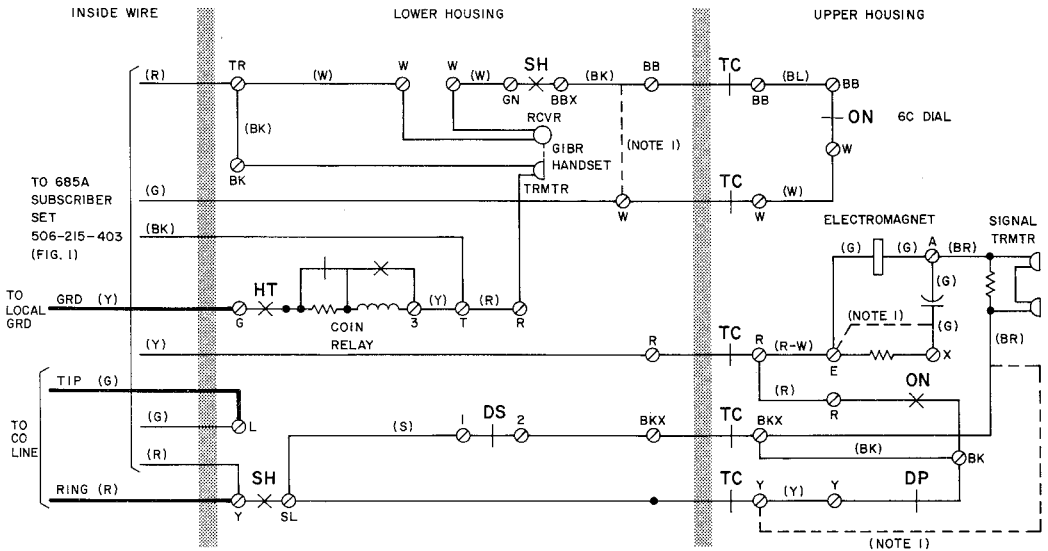
**NOTES:**

1. DOTTED LINES SHOW SETS WITH MANUAL CONNECTIONS  
[191, 195, 196, 197 (CNS AND DNS)] DIAL IS REPLACED WITH 50C APPARATUS BLANK.
2. WHEN A 6IR FILTER IS REQUIRED FOR RADIO FREQUENCY SUPPRESSION, MOVE (Y) DIAL LEAD FROM Y UPPER HOUSING CONTACT SPRING TO FILTER BRACKET TERM., CONNECT (BK) FILTER LEAD TO FILTER BRACKET TERM., CONNECT (BK) FILTER LEAD TO BK UPPER HOUSING CONTACT, AND CONNECT (R) FILTER LEAD TO Y UPPER HOUSING CONTACT.
3. WHEN COIN COLLECTOR IS INSTALLED IN A KS-14611, LIST 2 BOOTH OR A KS-16705 MOUNTING, THE TIP AND RING LINE TERMINATIONS ARE CONNECTED DIRECTLY TO THE SUBSCRIBER SET.
4. REMOVE THE (Y) STRAP FROM TERMINAL T - TAPE AND STORE WHEN USED WITH 685B SUBSCRIBER SET.

- DP - DIAL PULSE CONTACTS
- HT - HOPPER TRIGGER CONTACTS
- SH - SWITCHHOOK CONTACTS
- ON - OFF NORMAL CONTACTS
- TC - TRANSFER CONTACTS
- DS - DIAL SHORTING CONTACTS

**Fig. 7—191, 195, 196, 197 (CNS, DNS, GNS, and HNS) Coin Collectors—Coin First, Connections**





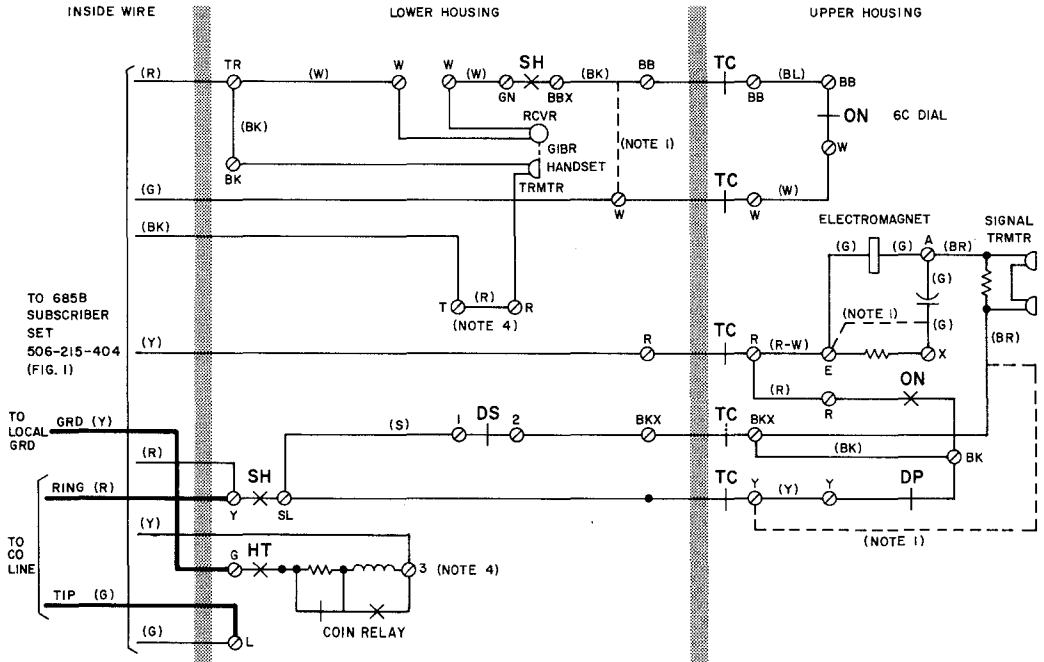
NOTES:

1. DOTTED LINES SHOW SETS WITH MANUAL CONNECTIONS [191, 195, 196, 197 (CNT AND DNT)] DIAL IS REPLACED WITH 50C APPARATUS BLANK.
2. WHEN A 6IR FILTER IS REQUIRED FOR RADIO FREQUENCY SUPPRESSION, MOVE (Y) DIAL LEAD FROM Y UPPER HOUSING CONTACT SPRING TO FILTER BRACKET TERM., CONNECT (Y) FILTER LEAD TO FILTER BRACKET TERM., CONNECT (BK) FILTER LEAD TO BK UPPER HOUSING TERM., AND CONNECT (R) FILTER LEAD TO Y UPPER HOUSING CONTACT.
3. WHEN COIN COLLECTOR IS INSTALLED IN A KS-14611, LIST 2 BOOTH OR A KS-16705 MOUNTING, THE TIP AND RING LINE TERMINATIONS ARE CONNECTED DIRECTLY TO THE SUBSCRIBER SET.

- DP - DIAL PULSE CONTACTS
- HT - HOPPER TRIGGER CONTACTS
- SH - SWITCHHOOK CONTACTS
- ON - OFF NORMAL CONTACTS
- TC - TRANSFER CONTACTS
- DS - DIAL SHORTING CONTACTS

Fig. 8—191, 195, 196, 197 (CNT, DNT, GNT, and HNT) Coin Collectors—Coin First, Connections

SECTION 506-330-404

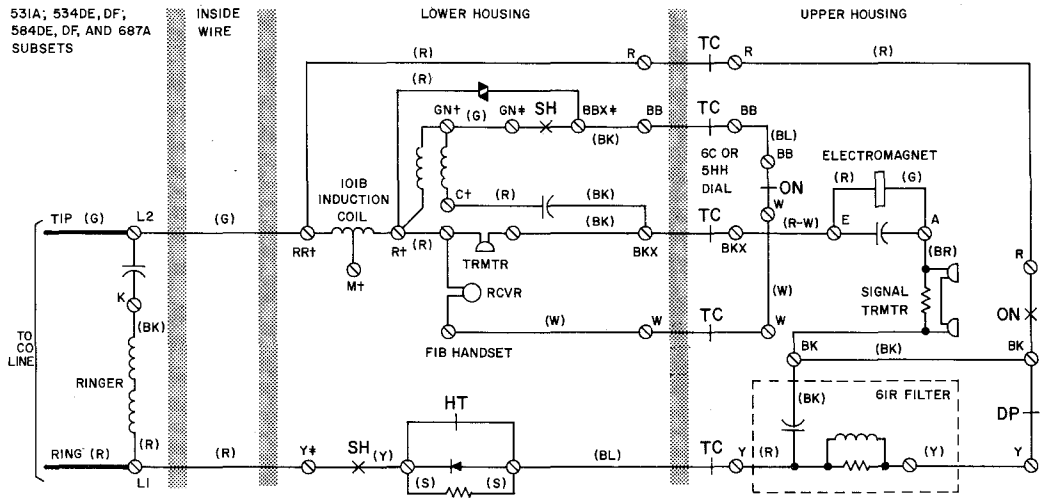


- NOTES:
1. DOTTED LINES SHOW SETS WITH MANUAL CONNECTIONS [191, 195, 196, 197 (CNT AND DNT)] DIAL IS REPLACED WITH 50C APPARATUS BLANK.
  2. WHEN A 6IR FILTER IS REQUIRED FOR RADIO FREQUENCY SUPPRESSION, MOVE (Y) DIAL LEAD FROM Y UPPER HOUSING CONTACT SPRING TO FILTER BRACKET TERM., CONNECT (Y) FILTER LEAD TO FILTER BRACKET TERM., CONNECT (BK) FILTER LEAD TO BK UPPER HOUSING CONTACT, AND CONNECT (R) FILTER LEAD TO Y UPPER HOUSING CONTACT.
  3. WHEN COIN COLLECTOR IS INSTALLED IN A KS-14611, LIST 2 BOOTH OR A KS-16705 MOUNTING, THE TIP AND RING LINE TERMINATIONS ARE CONNECTED DIRECTLY TO THE SUBSCRIBER SET.
  4. REMOVE THE (Y) STRAP BETWEEN TERMINALS 3 AND T WHEN USED WITH 685B SUBSCRIBER SET.

- DP - DIAL PULSE CONTACTS
- HT - HOPPER TRIGGER CONTACTS
- SH - SWITCHHOOK CONTACTS
- ON - OFF NORMAL CONTACTS
- TC - TRANSFER CONTACTS
- DS - DIAL SHORTING CONTACTS

Fig. 9—191, 195, 196, 197, (CNT, DNT, GNT, and HNT) Coin Collector—Coin-First, Connections

531A; 534DE, DF;  
584DE, DF, AND 687A  
SUBSETS



- † TERM. ON IOIB INDUCTION COIL
- \* TERMINALS ON SAME BLOCK AS LOWER HOUSING TC
- DP DIAL PULSE CONTACTS
- SH SWITCH HOOK CONTACTS
- ON OFF NORMAL CONTACTS
- TC TRANSFER CONTACTS
- HT HOPPER TRIGGER CONTACTS

**Fig. 10—193G, H and 198G, H Coin Collectors with 531A; 534DE, DF; 584DE, DF; or 687A Subscriber Sets—Postpay, Connections**

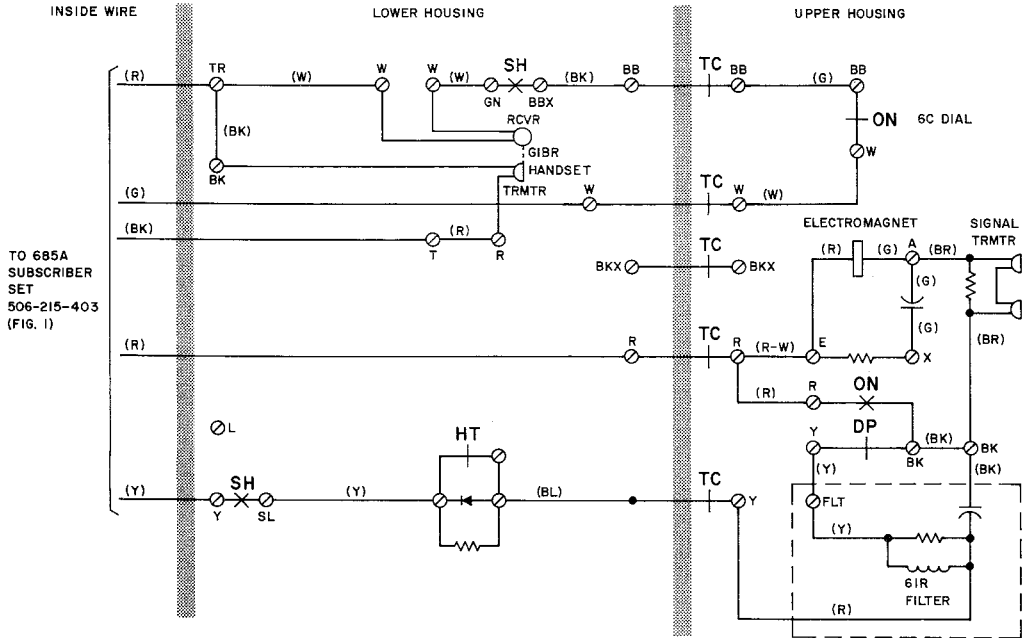


Fig. 11—193GN, HN and 198GN, HN Coin Collectors—Postpay, Connections