

SERVICE
COIN COLLECTORS, SUBSCRIBER SET REQUIRED
220 SERIES

1. GENERAL

1.01 This section provides connection information for the 220-type coin collectors.

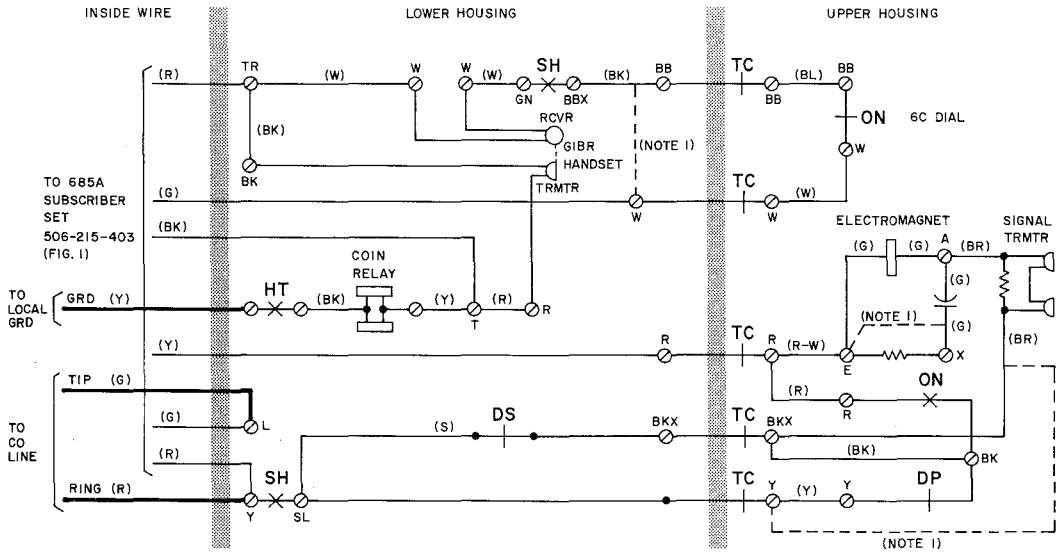
1.02 This section is reissued to:

- Add a note, required when a 685B subscriber set is used with coin collector

- Rearrange drawings to be consistent with other practices

- Delete connection information for the 685A and B subscriber sets

1.03 Refer to Section 506-215-404 for connection information for the 685A and B subscriber sets.

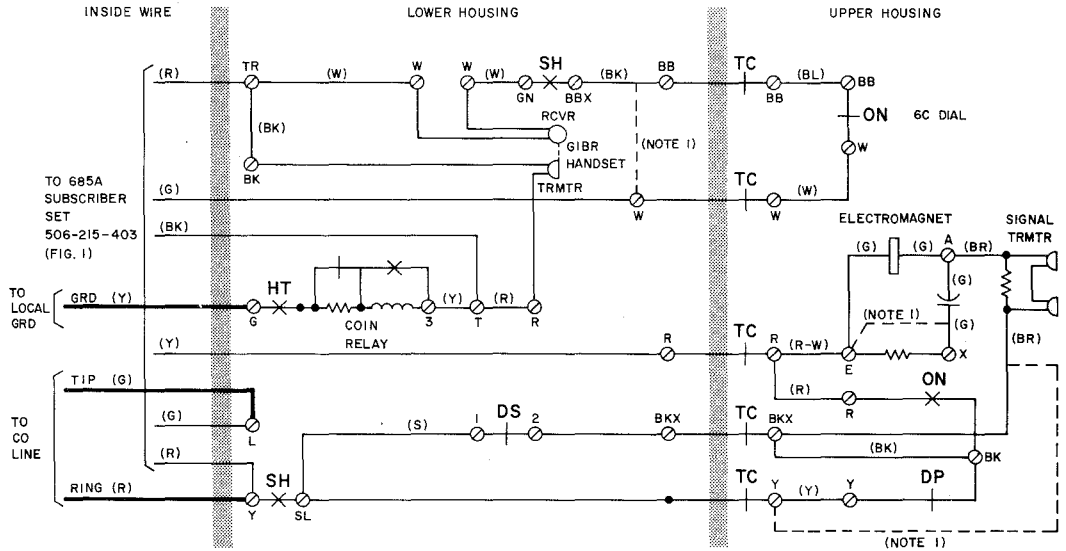


NOTES:

1. DOTTED LINES SHOW SETS WITH MANUAL CONNECTIONS [220, 223 (C AND D)] DIAL IS REPLACED WITH 50C APPARATUS BLANK.
2. WHEN A 6IR FILTER IS REQUIRED FOR RADIO FREQUENCY SUPPRESSION, MOVE (Y) DIAL LEAD FROM Y UPPER HOUSING CONTACT SPRING TO FILTER BRACKET TERM., CONNECT (Y) FILTER LEAD TO FILTER BRACKET TERM., CONNECT (BK) FILTER LEAD TO BK UPPER HOUSING CONTACT, AND CONNECT (R) FILTER LEAD TO Y UPPER HOUSING CONTACT.

- DP - DIAL PULSE CONTACTS
- HT - HOPPER TRIGGER CONTACTS
- SH - SWITCHHOOK CONTACTS
- ON - OFF NORMAL CONTACTS
- TC - TRANSFER CONTACTS
- DS - DIAL SHORTING CONTACTS

Fig. 1—220, 223 (C, D, G, H) Coin Collectors with 685A Subscriber Set—Coin First, Connections

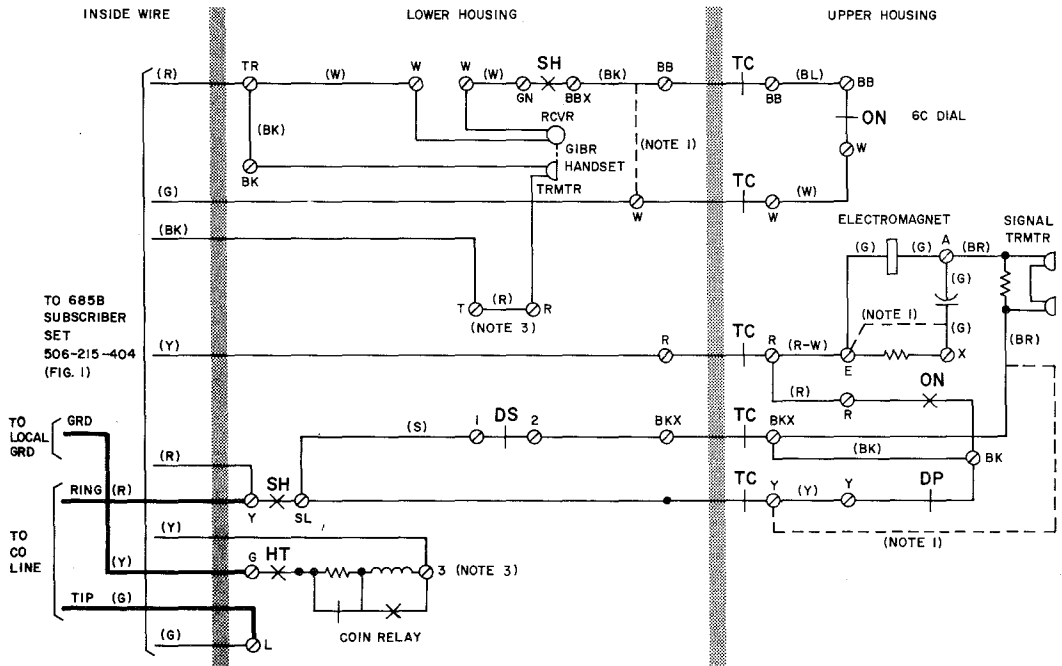


NOTES:

1. DOTTED LINES SHOW SETS WITH MANUAL CONNECTIONS [220, 223 (CT AND DT)] DIAL IS REPLACED WITH 50C APPARATUS BLANK.
2. WHEN A 6IR FILTER IS REQUIRED FOR RADIO FREQUENCY SUPPRESSION, MOVE (Y) DIAL LEAD FROM Y UPPER HOUSING CONTACT SPRING TO FILTER BRACKET TERM., CONNECT (Y) FILTER LEAD TO FILTER BRACKET TERM., CONNECT (BK) FILTER LEAD TO BK UPPER HOUSING CONTACT, AND CONNECT (R) FILTER LEAD TO Y UPPER HOUSING CONTACT.
3. WHEN COIN COLLECTOR IS INSTALLED IN A KS-14611, LIST 2 BOOTH OR A KS-16705 MOUNTING, THE TIP AND RING LINE TERMINATIONS ARE CONNECTED DIRECTLY TO THE SUBSCRIBER SET.

- DP - DIAL PULSE CONTACTS
- HT - HOPPER TRIGGER CONTACTS
- SH - SWITCHHOOK CONTACTS
- ON - OFF NORMAL CONTACTS
- TC - TRANSFER CONTACTS
- DS - DIAL SHORTING CONTACTS

Fig. 3—220, 223, (CT, DT, GT, HT) Coin Collectors with 685A Subscriber Set—Coin-First, Connections



NOTES:

1. DOTTED LINES SHOW SETS WITH MANUAL CONNECTIONS [220, 223 (CT AND DT)] DIAL IS REPLACED WITH 50C APPARATUS BLANK.
2. WHEN A GIR FILTER IS REQUIRED FOR RADIO FREQUENCY SUPPRESSION, MOVE (Y) DIAL LEAD FROM Y UPPER HOUSING CONTACT SPRING TO FILTER BRACKET TERM., CONNECT (Y) FILTER LEAD TO FILTER BRACKET TERM., CONNECT (BK) FILTER LEAD TO BK UPPER HOUSING CONTACT, AND CONNECT (R) FILTER LEAD TO Y UPPER HOUSING CONTACT.
3. REMOVE THE (Y) STRAP BETWEEN TERMINALS 3 AND T WHEN USED WITH THE 685B SUBSCRIBERS SET.

DP - DIAL PULSE CONTACTS
 HT - HOPPER TRIGGER CONTACTS
 SH - SWITCHHOOK CONTACTS
 ON - OFF NORMAL CONTACTS
 TC - TRANSFER CONTACTS
 DS - DIAL SHORTING CONTACTS

Fig. 4—220, 223 (CT, DT, GT, HT) Coin Collectors with 685B Subscriber Set—Coin First, Connections