

KS-19928 CARD FRAME

IDENTIFICATION AND INSTALLATION

1. IDENTIFICATION

1.01 The KS-19928 card frame (Fig. 1) is a universal card frame used to display a 7 by 10-1/4-inch advertising or instruction card in public telephone booths.

1.02 Two card frames are available: KS-19928, List 1 which replaces KS-14123 card frame and KS-19928, List 2 which replaces KS-14611, Lists 39 and 139 used in KS-14611 booth.

1.03 *KS-19928, List 1:* Consists of a semibright aluminum frame, aluminum backplate assembly, and a plastic window; overall dimensions are 1/2 by 7-1/2 by 10-1/2 inches.

1.04 List 1 card frame is designed for flatwall mounting and is provided for use in KS-19206, KS-19340, and KS-19442 telephone booths (Fig. 2).

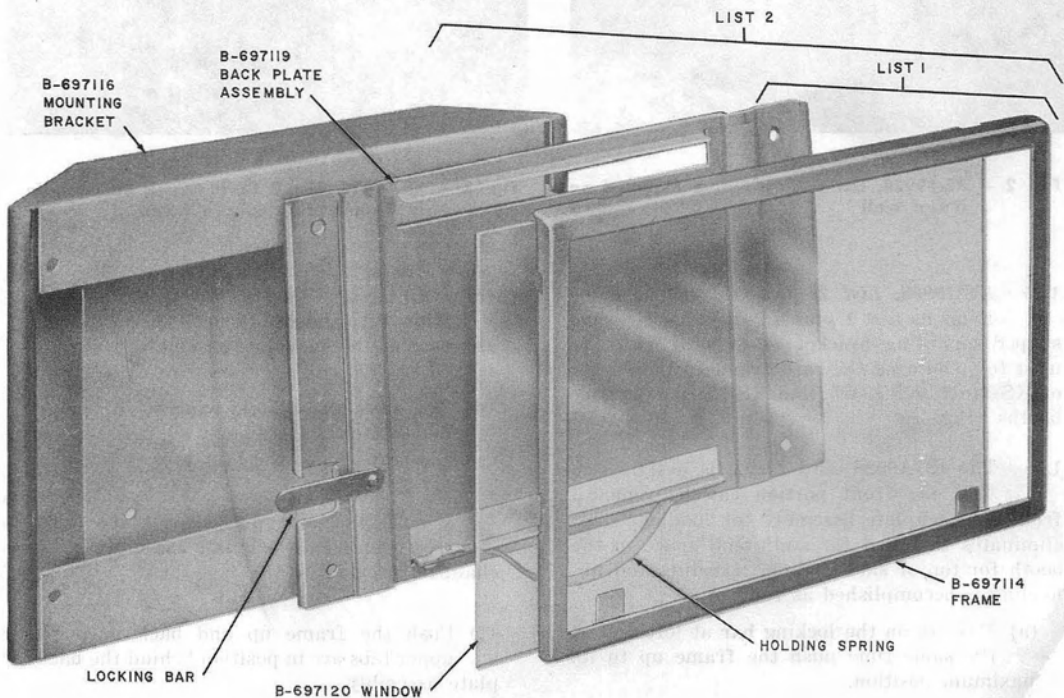


Fig. 1 — KS-19928 Card Frame



Fig. 2 — KS-19928, List 1 Card Frame Mounted on a Flat Wall

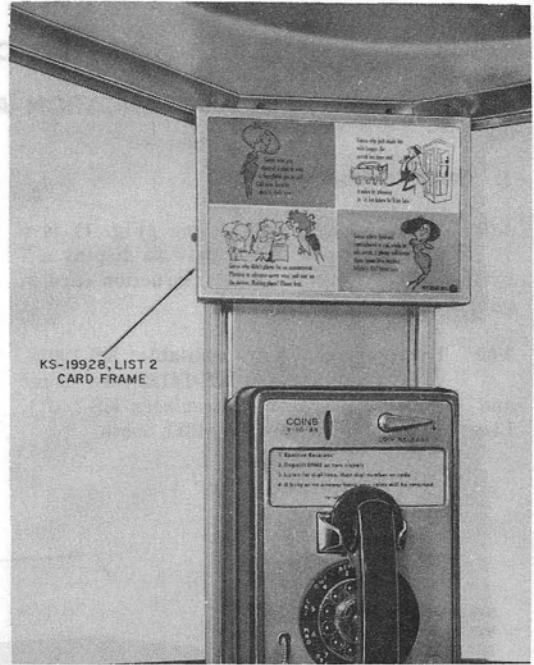


Fig. 3 — KS-19928, List 2 Card Frame Mounted in Corner of Telephone Booth

1.05 KS-19928, List 2: Consists of the same items as List 1 plus a 2-inch thick wedge-shaped mounting bracket (B-697116) (Fig. 1) used for mounting the card frame in the corner of KS-14611, KS-19425, and KS-19580 telephone booths (Fig. 3).

1.06 The KS-19928 card frame is designed so that the front portion can be removed from the backplate assembly for loading. This eliminates the need for additional space in the booth for top or side loading. Loading and unloading is accomplished as follows:

- (a) Push in on the locking bar at left and at the same time push the frame up to its maximum position.
- (b) With the frame in the upward position, pull the top of the frame forward until the upper tabs are clear of the backplate assembly.

- (c) With the upper part of the frame forward, allow it to slide down until the lower tabs are clear of the backplate assembly.

- (d) The card and plastic window can be removed from the frame by sliding them out the side from under the four tabs.

- (e) To install the frame, position the lower tabs behind the backplate assembly in the channels provided.

- (f) Push the frame up and back until the upper tabs are in position behind the backplate assembly.

- (g) Allow the frame to slide down until it is locked in place by the locking bar at left.

Ensure that the upper tabs are completely behind the backplate assembly and down in position since the holding spring may allow the upper corners of the frame to rest on the upper corners of the backplate assembly without being properly secured.

2. INSTALLATION

2.01 On flatwall surfaces, only the List 1 card frame is required. Install as follows:

- (a) Mount the B-697117 backplate assembly in the desired position and hold it in this position with one hand.
- (b) Using the backplate assembly as a marking template, mark the location for drilling four holes.
- (c) Using a No. 27 drill, drill the four holes.
- (d) Install the backplate assembly with locking bar to left, using four No. 8 self-tapping screws. (Screws must be obtained locally.)

(e) Install card and secure frame as directed in 1.06 (e) through (g).

2.02 In booth corners List 2 card frame is required. Install as follows:

- (a) Mount the B-697116 wedge-shaped mounting bracket in the desired position and hold it in this position with one hand.
- (b) Using the mounting bracket as a marking template, mark the location for drilling four holes.
- (c) Using a No. 27 drill, drill the four holes.
- (d) Install the mounting bracket using four No. 8 self-tapping screws. (Screws must be obtained locally.)
- (e) Install the backplate assembly (with locking bar to left) on the mounting bracket using the four No. 8-32 by 3/16 RH screws which are furnished.
- (f) Install card and secure frame as directed in 1.06 (e) through (g).