

LOADING AND BINDING POLES ON POLE TRAILERS

CONTENTS	PAGE	
1. GENERAL	1	2.02 When snaking a pole make sure that the pole does not catch on an obstruction which will cause it to swing around. If it is necessary to guide the pole, the guiding should be done at the butt end of the pole.
2. SAFETY PRECAUTIONS	1	2.03 Chock the wheels of the trailer before detaching it from the truck when the trailer is to be loaded with poles. When the trailer is loaded and parked it shall also be chocked (Section 649-040-200).
3. LOADING POLES—GENERAL	1	2.04 Whenever possible, use a truck to move the trailer into position for loading or unloading.
4. LOADING POLES WITH POLE DERRICK	2	2.05 When coupling the trailer to the towing truck, keep hands clear of the towing eye and the towing hook.
5. LOADING POLES USING SKIDS	2	2.06 After coupling the trailer to the towing truck, make sure that the towing hook is closed and that the latch is in the locked position. Attach safety chains or slings to the towing vehicle. Attach electrical jumper cable.
6. BINDING POLES	4	2.07 Do not use the winch line to bind a load of poles.
7. UNLOADING POLES	6	2.08 Display lights, reflectors, and flags on the end and sides of the pole load as required by local regulations.
1. GENERAL		2.09 Examine the wire on the pole binder. If it does not conform with wire rope inspection per section 649-310-011, replace with new wire rope.
1.01 This section covers methods of loading, binding, and unloading poles using the standard pole trailers.		3. LOADING POLES—GENERAL
1.02 This section is reissued to update text and illustrations.		3.01 Some of the methods for loading poles are described in this section. When other methods
1.03 Since derricks and winches are used with pole trailers to load and unload poles, the sections on derricks, winches, and wire rope shall be considered supplementary instructions. The section on Pole Trailers—General (Section 649-210-100) and Pole Trailers—Equipment (Section 649-210-101) shall also be considered supplementary instructions.		
2. SAFETY PRECAUTIONS		
2.01 Before starting any work involving pole trailers, inspect the equipment to make sure that all parts are in place and in safe working condition. Observe safety precautions in Sections 649-210-100 and 649-210-101.		

are used the precautions outlined here shall be observed. Pole trailers and accessories are described in sections of the 649 Series of practices.

3.02 When loading poles on a two-wheel pole trailer, the position of each pole on the trailer shall be such that 10 to 15 percent of the total load on the trailer is transferred to the towing truck (Section 649-210-300). Test the load balance after every third pole is loaded. If the load is found to be too tongue heavy or tongue light, load the subsequent poles to balance the load. Where possible, load the poles with the butts forward in order that the shortest possible tongue length can be used.

3.03 If the length of poles to be loaded on the trailer will not permit the trailer tongue to be connected directly to the truck, the largest straight pole should be used as a king pole. It will always be necessary to use a king pole if the trailer is not equipped with an extensible tongue.

3.04 The king pole is loaded first and is placed directly over the tongue with the top of the pole toward the truck, the length of overhang should be as short as possible. The towing hook of the truck and the king pole are connected by using a drawbar. The binding of the king pole is covered in Section 649-210-101, Pole Trailers—Equipment.

3.05 If the poles are to be delivered to stake locations and unloaded one at a time, load the poles so the first poles to be delivered are on top of the load.

3.06 When using a trailer with an extensible tongue, keep the tongue as short as possible as poles to be loaded will permit. Adjust the tongue by chocking the wheels of the trailer and then move the truck slowly until the proper length is reached.

4. LOADING POLES WITH POLE DERRICK

4.01 Whenever practicable use a pole derrick to load poles on the trailer.

4.02 Attach the winch line to the pole as near the balance point as possible and lift the pole onto the trailer (Fig. 1). While loading the pole make sure that it does not swing and injure an employee or damage the truck or equipment. The load limitations of the type of derrick being used shall be considered. Refer to manufacturing load rating chart attached to the derrick.

5. LOADING POLES USING SKIDS

5.01 When skids are used to load poles on a trailer, the trailer may be either unhooked from the truck or left attached to it. When a trailer is unattached it must be securely chocked.

5.02 Adjust the trailer tongue to the desired length for carrying the poles and place skids at the front and rear bolsters so the poles may be rolled onto the bolsters. A skid which will handle all common telephone poles is a 4-inch, 7.7 lbs., steel I beam or its equivalent in strength (approximately 6- by 6-inch white oak beam). Arrange the skids so that they will not slip from the bolsters and the pole will clear the tires as they are rolled up the skids.

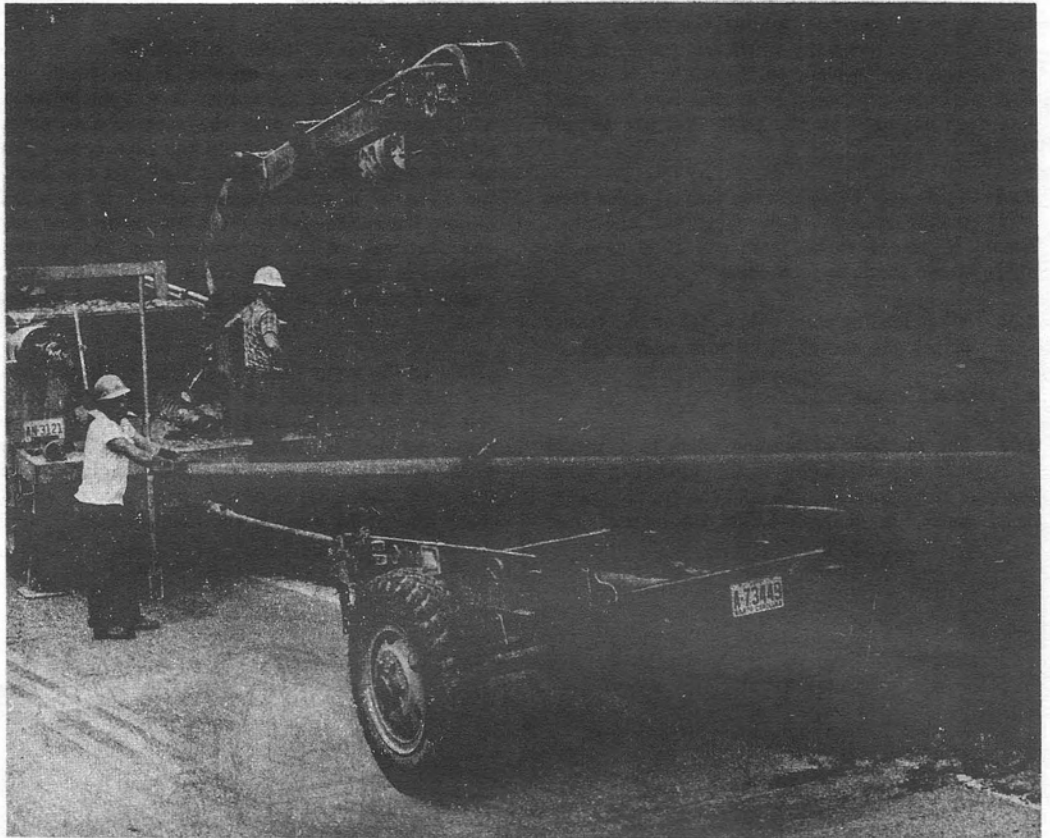
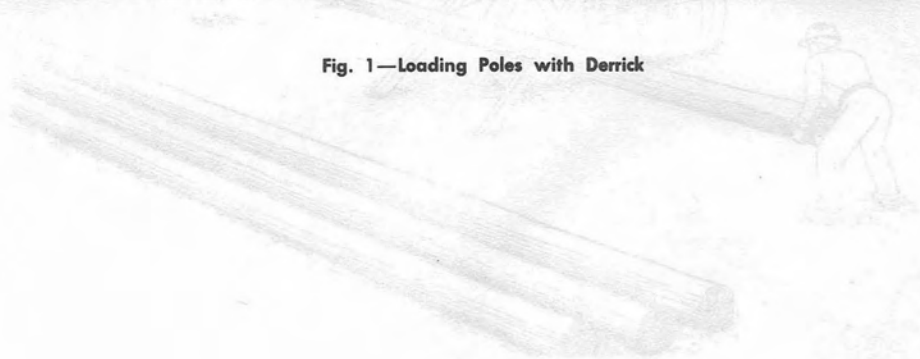


Fig. 1—Loading Poles with Derrick



5.03 Attach a snatch block to the side of the trailer (Fig. 2), then run the winch line through the block, over the pole to be loaded and then back to the rope holding the block. Then pull in the line using the winch and guide the pole up the skids to its place on the trailer. After the first few poles are loaded be careful that the winch line does not bind on the poles that are already loaded.

5.04 Skids may be used when loading poles from trailer height. Pole skids and the skids should be placed so the pole will slide onto the skids rather than drop on them.

5.05 When loading poles onto a P3T or P8T trailer attach the snatch block to a stanchion.

6. BINDING POLES

6.01 The methods of binding poles to a trailer will vary depending on the number of poles, the type of binder available, and the type of trailer being used. In general, loads can be classified

into two categories; those on a trailer with an extensible tongue and those on a trailer which requires a king pole.

6.02 All loads of poles must be bound in two places, at the rear and at the front. If the rear bolster of the trailer is equipped with a load binding winch, pass the rope of the winch around and fasten the eye to the rope knob, then operate the winch to bind the load. At the front, the sling of a portable pole binder is wrapped around the entire load and the tongue or king pole and fastened on the rope knob on the binder. Tension is applied by the winch to bind the load. Figure 3 shows a pole load properly bound with a chain.

6.03 In the event that a rear load binding winch is not supplied on the trailer, a portable pole binder shall be used to bind the load. The rope sling shall be passed around the trailer frame which shall be inspected prior to binding to be sure that the sling does not pass around edges sharp enough to damage the rope strands.

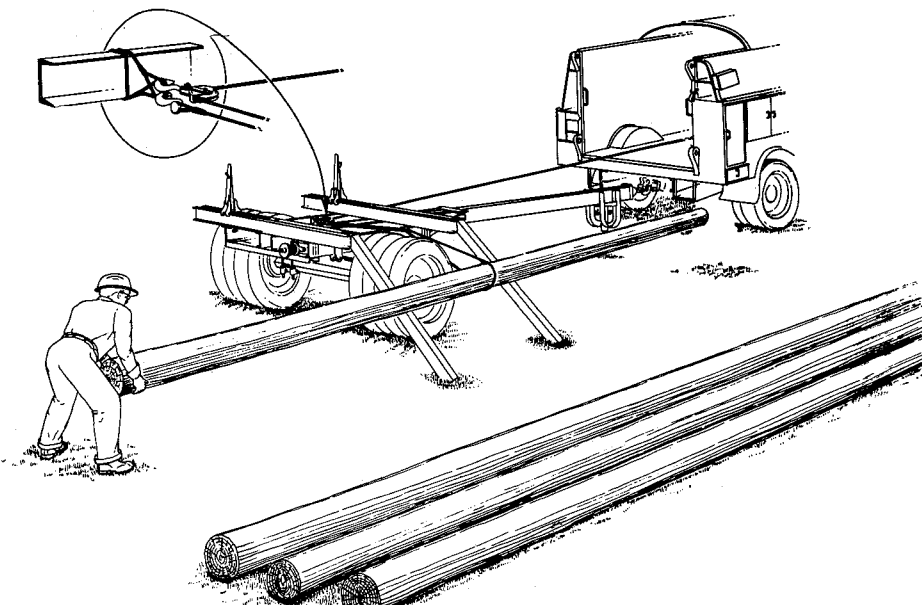


Fig. 2—Loading Poles Using Skid

When poles are carried on a trailer, the poles should be secured to the trailer with chains or other suitable means. The poles should be secured to the trailer in such a manner that they will not shift or fall off during transport.

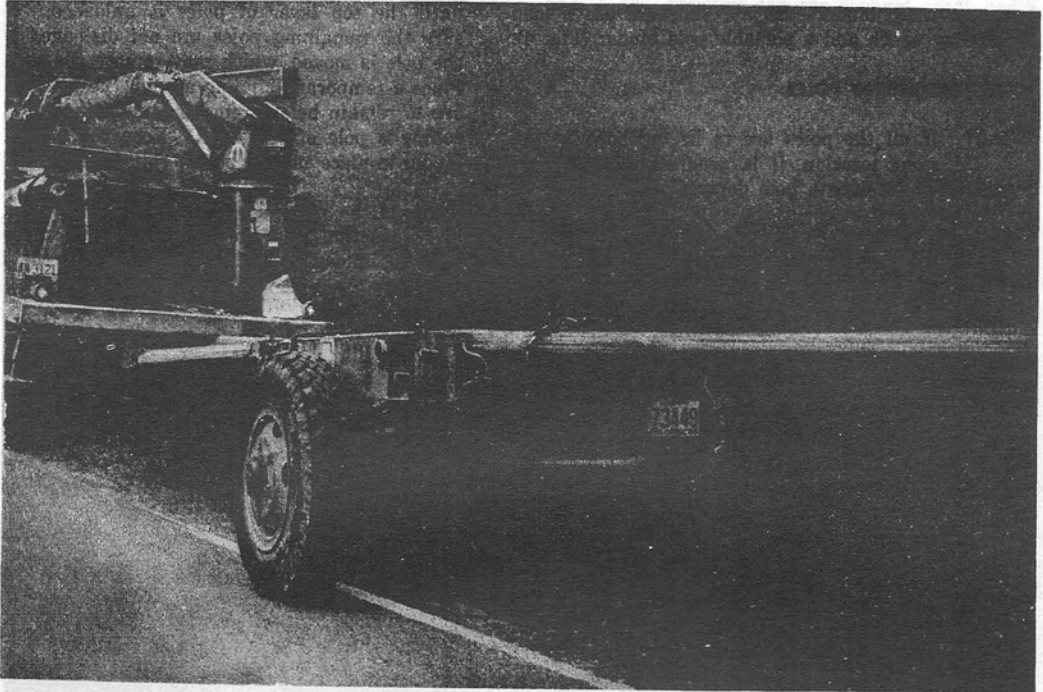


Fig. 3—Binding Poles on Trailer

—Right side view

6.04 When one pole is carried on a trailer the king pole binders are used to bind the pole. When these binders are not supplied, use a load binding winch and a portable pole binder (Fig. 4).

7. UNLOADING POLES

7.01 If all the poles are to be unloaded at the same location, it is generally advisable to unload them with a pole derrick.

7.02 The poles can be removed from the load by rolling each pole over the side of the trailer. (See Fig. 5.) Skids may be required depending on

the length of the pole and the surface condition of the ground. Do not remove the trailer stanchions until the top layer of poles is unloaded. Make sure the remaining poles are not dislodged when the pole is moved, which may remove the support. Place a temporary binding around the poles which are to remain before removing the stanchions and rolling a pole off the load. Keep the temporary binder in place as each pole is rolled off the trailer.

7.03 If the poles are to be distributed to stake locations near an existing pole line, the poles may be unloaded by lifting them from the load (Fig. 6).

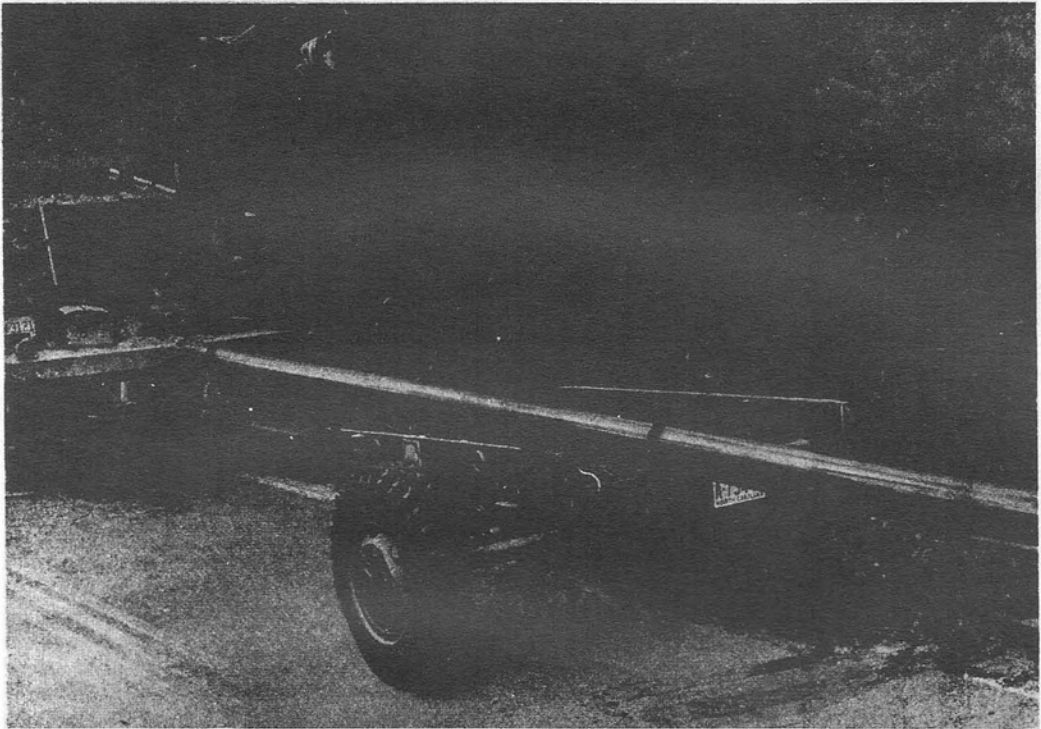


Fig. 4—Single Pole on Trailer

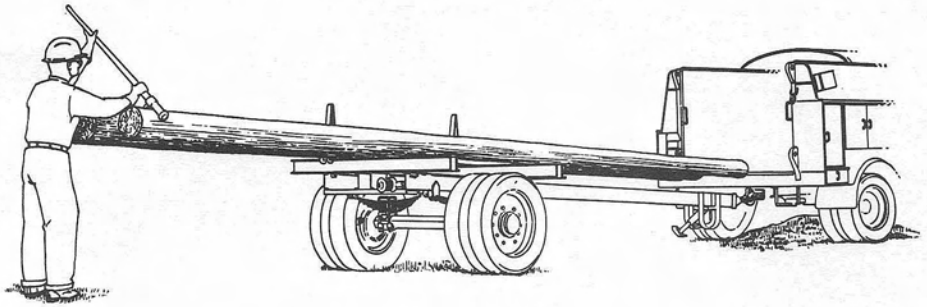


Fig. 5—Rolling Poles Over Trailer Side



Fig. 6—Removing Single Pole in Preparation for Installation