

POLES MARKINGS AND INSIGNIA

CONTENTS	PAGE
1. GENERAL	1
2. DESCRIPTION	1
3. LOCATION ON POLE	2
4. INSTALLATION ON POLE	3
5. REMOVAL FROM POLE	5

2. DESCRIPTION

2.01 The reflector button (Cataphote, 1AW) consists of a short, glass cylinder which is convex at the outer end and is fitted with a curved reflector surface at the back end. See Fig. 1. When installed in the pole and pointed in the direction of oncoming traffic, the button reflects the light from the vehicle back to the driver thereby alerting him to the presence of the pole.

1. GENERAL

1.01 This section outlines the use of reflectors and markings on poles to make them more visible for safety, to show ownership, to identify their position in the lead or their location, and to aid in the keeping of plant records.

1.02 This section is reissued to include up-dated information and material from Section 621-200-206 which is cancelled. Since this is a consolidation and general revision, arrows normally used to indicate changes have been omitted.

1.03 Visibility is increased by reflector buttons which reflect the lights of vehicles as they travel along the highways or roads.

1.04 Reflector buttons shall be installed only when specified by the instructions for particular poles.

1.05 Insignia for poles or pole lines, to indicate their ownership and location, consists of tags, letters, and numerals.

1.06 Pole insignia shall be placed on poles, as outlined in this section, unless public regulations or local instructions provide otherwise. The detail plans will usually indicate line designation and pole numbers.

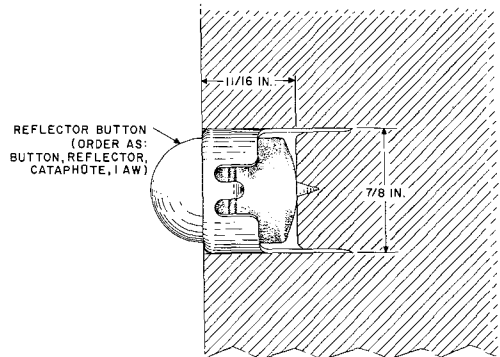


Fig. 1—Reflector Button

2.02 *Pole Insignia:* Ownership tags, letters, and numerals which are attached to poles with 1-1/4 inch pole tag nails, are made up of the following:

- (a) Company name tag (ownership tag)
- (b) The twenty-six upper case letters of the alphabet and a character "&" to indicate "and"
- (c) A small letter "o" for use in abbreviations such as "Co".

(d) Numerical digits 0 through 9.

3. LOCATION

3.01 Unless public regulations require other locations, the reflector buttons shall be located as follows:

- (1) Locate two buttons on each pole, the lower button at height five feet above the level of the crown on the adjacent highway and the upper button 12 inches directly above the lower button.
- (2) Locate the buttons so they face toward a point 200 feet away in the line of traffic approaching the pole on the near side of the highway. A pole located at a highway intersection may require more sets of reflector buttons to reflect light of traffic approaching from two or more directions.
- (3) If the requirements of (1) and (2) should locate a button at or within four inches above a pole step, the location of the two buttons shall be shifted up or down. Shift a minimum distance so that the button nearest a step will be below the step or more than four inches above. The twelve-inch vertical separation between the reflector buttons shall be maintained.

3.02 Locate insignia on poles with top marking about seven feet above the ground level to ensure visibility and to minimize the possibility of damage.

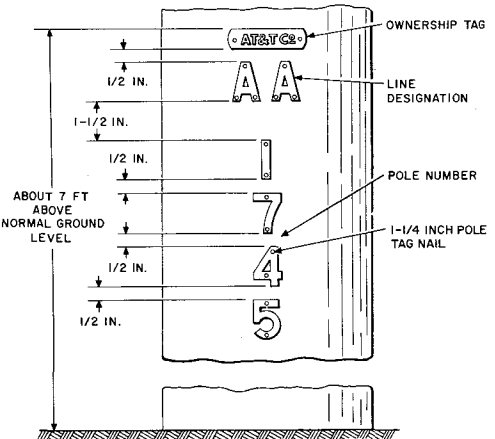
3.03 Poles on highways, roads, streets, or alleys should have insignia on side of pole visible from the ordinary course of travel. Poles on private property or easements should have insignia on side of pole visible from the normal access or path.

3.04 Pole insignia should be located on a pole reading downward from the seven foot level as follows:

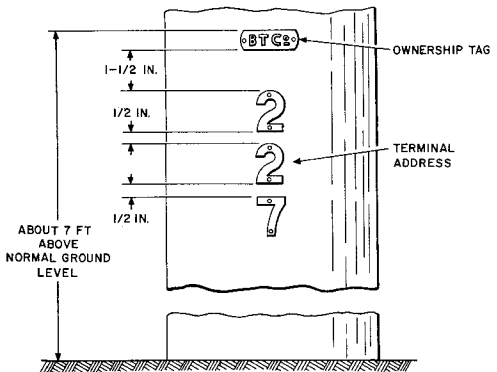
- (a) Ownership tag, aligned horizontally.
- (b) Pole line designation, aligned horizontally.
- (c) Pole number, aligned horizontally unless the numerals would occupy more than one-third

of the pole circumference. In that event, the numerals shall be placed vertically.

(d) See Fig. 2 and 3 which illustrate (a), (b), and (c).



TELEPHONE CO. POLE
REGULAR POLE NUMBER
VERTICAL NUMBERING



TELEPHONE CO. POLE
TERMINAL ADDRESS
(NO NUMBER)

Fig. 2—Vertical Marking

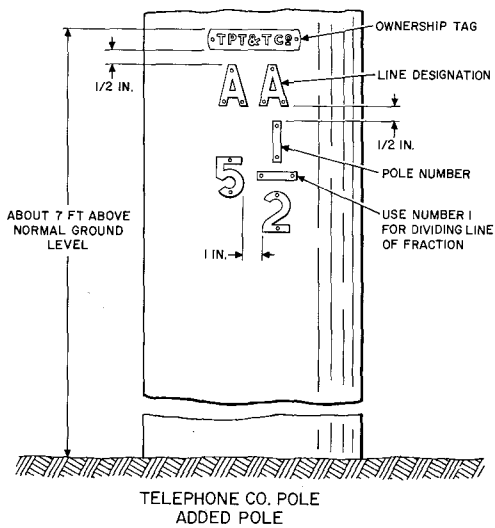


Fig. 3—Marking Added Pole

(e) Jointly owned poles should have the joint company's tag aligned horizontally below the pole designation as shown in Fig. 4. If necessary as outlined in (c), the pole number can be placed with numerals in vertical position.

4. INSTALLATION

4.01 The reflector button shall be installed in a 1/8-inch hole bored to a depth of 11/16 inch. The use of an auger bit gauge will ensure the proper depth of hole. The reflector button is held in the pole by a metal collar which rests on a flange on the glass and has two projecting points which are driven into the wood. A short length of 3/4 inch inside diameter metal tubing, pipe, or conduit is fitted over the metal collar and the button is driven into place by tapping on the tubing with a suitable hammer. See Fig. 1.

4.02 Toll pole line designations and numbering should be placed on poles in the line as follows:

(a) The first and last poles and poles at uniform intervals as specified on detail plans or required by local instructions

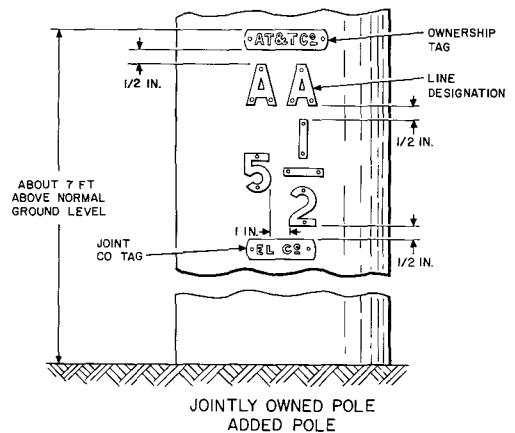
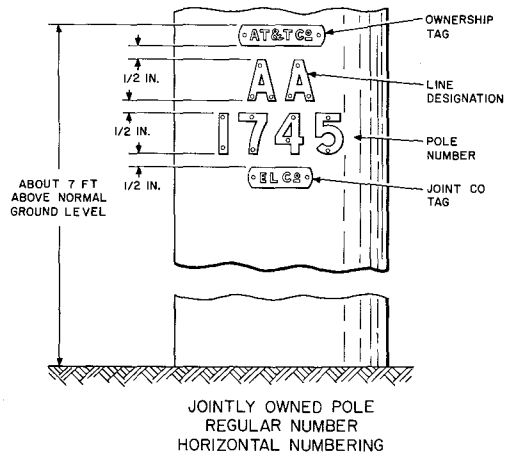


Fig. 4—Horizontal Marking

- (b) Junctions with other lines or with branch lines
- (c) Railroad crossings
- (d) Road crossings when the pole line is not generally accessible.

4.03 Exchange pole lines in *rural* areas should have the same designations and numbering described in 4.02 for toll lines. Exchange pole lines in *urban* areas will not usually be assigned

a line designation since street names should provide adequate identification of location.

4.04 Place ownership tags on poles *only when specified* by detail plans or local instructions.

4.05 Number poles where activity has changed the original numbering scheme as follows:

- (1) At each side of a gap caused by line change which has reduced the number of poles. See Fig. 5.

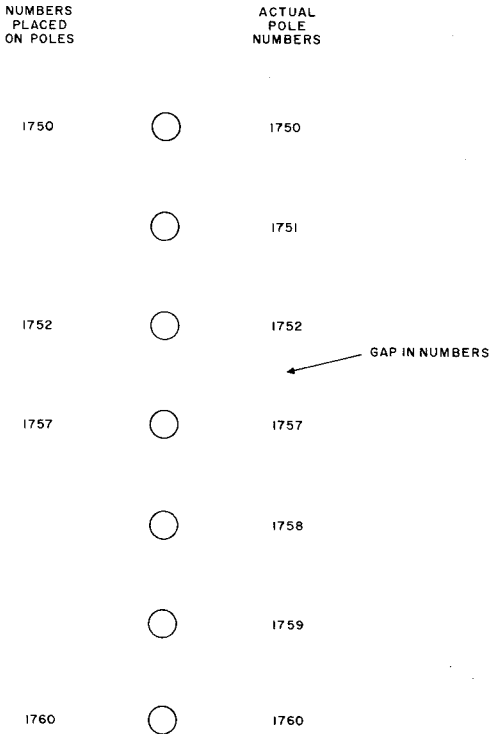


Fig. 5—Gap in Numbers

- (2) When a single pole is added between any two adjacent poles, add numbers and fractional numbers as shown in Fig. 6.

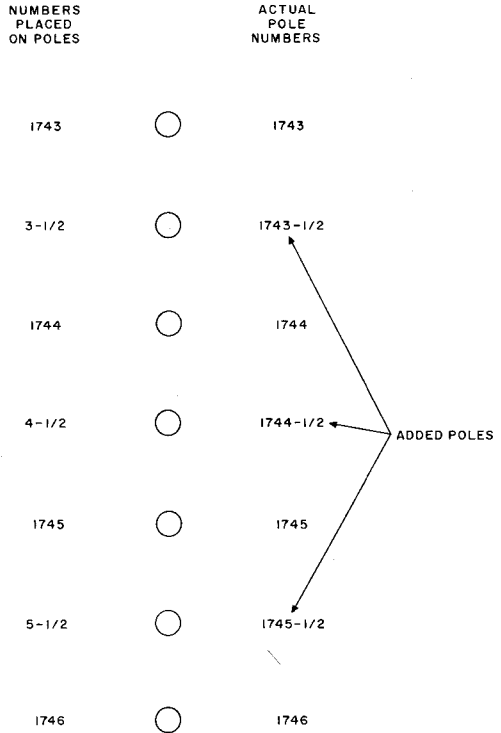


Fig. 6—Single Pole Added

- (3) When more than one pole is added between any two adjacent poles, add numbers and fractional numbers as shown in Fig. 7.

- (4) At "H" fixtures place full number on pole nearer the road or travelway. Facing the direction of increasing pole numbers, place the letter "L" on left-hand pole and letter "R" on right-hand pole as shown in Fig. 8.

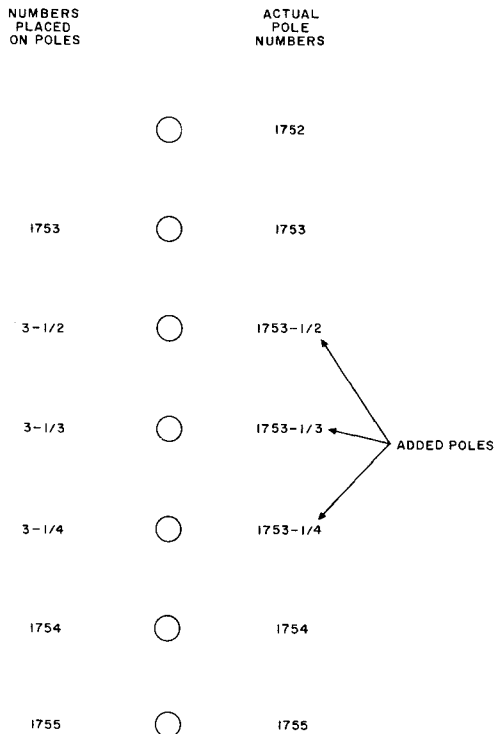


Fig. 7—More Than One Pole Added

(5) At three pole fixtures place full number on the center pole. When in position as in (4) place the letter "L" on left-hand pole and letter "R" on right-hand pole.

4.06 Exchange pole lines in *urban* areas having building numbering plans should have no markings except for terminal poles as follows:

- (a) Terminal poles adjacent to vacant lots shall be marked with the house number that would normally be assigned to a house if built on the lot.
- (b) Mark the terminal pole if the house number cannot be seen from the route of normal

access to the pole. An example is a pole line in an alley which the employee would use for

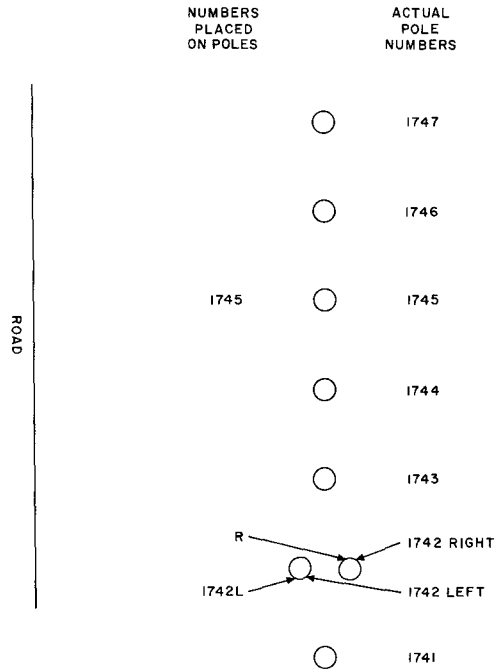


Fig. 8—Numbering H Fixture

access to the terminal pole after reaching the address on the adjacent street.

(c) Number exchange poles in *urban* areas which have no building numbering plans the same as exchange poles in *rural* areas. See 4.03.

4.07 The quantities of individual numerals required for various numbering arrangements are shown in Tables A, B, and C.

5. REMOVAL

5.01 Remove all obsolete or unnecessary markings when changing the existing numbering or marking on a pole.

TABLE A

NUMBERS	QUANTITY OF INDIVIDUAL NUMERALS										TOTAL
	1	2	3	4	5	6	7	8	9	0	
CONSECUTIVE NUMBERING (FULL NUMBER ON EVERY POLE)											
1-25	13	9	3	3	3	2	2	2	2	2	41
26-50	2	6	12	12	3	3	3	3	3	3	50
51-75	3	3	3	3	12	12	8	2	2	2	50
76-100	3	2	2	2	2	3	7	13	13	4	51
1-100	21	20	20	20	20	20	20	20	20	11	192
101-200	119	21	20	20	20	20	20	20	20	20	300
201-300	20	119	21	20	20	20	20	20	20	20	300
301-400	20	20	119	21	20	20	20	20	20	20	300
401-500	20	20	20	119	21	20	20	20	20	20	300
501-600	20	20	20	20	119	21	20	20	20	20	300
601-700	20	20	20	20	20	119	21	20	20	20	300
701-800	20	20	20	20	20	20	119	21	20	20	300
801-900	20	20	20	20	20	20	20	119	21	20	300
901-1000	21	20	20	20	20	20	20	20	119	21	301
1-1000	301	300	300	300	300	300	300	300	300	192	2893
1001-2000	1299	301	300	300	300	300	300	300	300	300	4000
2001-3000	300	1299	301	300	300	300	300	300	300	300	4000

TABLE B

NUMBERS	QUANTITY OF INDIVIDUAL NUMERALS										TOTAL
	1	2	3	4	5	6	7	8	9	0	
FULL NUMBER AT "O" AND "5" PLUS LAST DIGIT ON INTERVIEWING POLES											
1-25	5	5	3	3	3	2	2	2	2	2	29
26-50	2	2	4	4	3	3	3	3	3	3	30
51-75	3	3	3	3	4	4	4	2	2	2	30
76-100	3	2	2	2	2	3	3	5	5	4	31
1-100	13	12	12	12	12	12	12	12	12	11	120
101-200	31	13	12	12	12	12	12	12	12	12	140
201-300	12	31	13	12	12	12	12	12	12	12	140
301-400	12	12	31	13	12	12	12	12	12	12	140
401-500	12	12	12	31	13	12	12	12	12	12	140
501-600	12	12	12	12	31	13	12	12	12	12	140
601-700	12	12	12	12	12	31	13	12	12	12	140
701-800	12	12	12	12	12	12	31	13	12	12	140
801-900	12	12	12	12	12	12	12	31	13	12	140
901-1000	13	12	12	12	12	12	12	12	31	13	141
1-1000	141	140	140	140	140	140	140	140	140	120	1381
1001-2000	340	141	140	140	140	140	140	140	140	139	1600
2001-3000	140	340	141	140	140	140	140	140	140	139	1600

TABLE C

NUMBERS	QUANTITY OF INDIVIDUAL NUMERALS										TOTAL
	1	2	3	4	5	6	7	8	9	0	
FULL NUMBER AT "O" AND "5" ONLY											
1-25	2	2			3					2	9
26-50			2	2	3					3	10
51-75					4	2	2			2	10
76-100	1				2			2	2	4	11
1-100	3	2	2	2	12	2	2	2	2	11	40
101-200	21	3	2	2	12	2	2	2	2	12	60
201-300	2	21	3	2	12	2	2	2	2	12	60
301-400	2	2	21	3	12	2	2	2	2	12	60
401-500	2	2	2	21	13	2	2	2	2	12	60
501-600	2	2	2	2	31	3	2	2	2	12	60
601-700	2	2	2	2	12	21	3	2	2	12	60
701-800	2	2	2	2	12	2	21	3	2	12	60
801-900	2	2	2	2	12	2	2	21	3	12	60
901-1000	3	2	2	2	12	2	2	2	21	13	61
1-1000	41	40	40	40	140	40	40	40	40	120	581
1001-2000	240	41	40	40	140	40	40	40	40	139	800
2001-3000	40	240	41	40	140	40	40	40	40	139	800