

B-TYPE CABLE TERMINALS

DESCRIPTION AND INSTALLATION

	CONTENTS	PAGE
1.	GENERAL	1
2.	DESCRIPTION	1
3.	LOCATING ON POLES AND WALLS	2
4.	MOUNTING ON POLES AND WALLS	7

1. GENERAL

- 1.01** This section covers the description and installation of B-type cable terminals.
- 1.02** This section is reissued to include the BK1 and BL1 cable terminals which are equipped with 76-type terminal blocks and delete reference to the BK and BL cable terminals. Revision arrows are used to emphasize the more significant changes.

- 1.03** The B-type cable terminals are designed for installation between feeder cables and distribution cables.
- 1.04** Additional information on these terminals is covered in the following sections.

SECTION	TITLE
631-040-200	Marking Outside Cross-Connecting Terminals
631-300-213	Placing Pole Seat and Terminal Balcony
631-300-214	Wiring
632-605-205	Splicing
634-210-511	S Test Connector (AT-8953)♦

2. DESCRIPTION

- 2.01** The dimensions of the B-type cable terminals are shown in Table A.

NOTICE

Not for use or disclosure outside the
 Bell System except under written agreement

TABLE A4

B-TYPE CABLE TERMINALS

CODE	DIMENSIONS (INCHES)			STUB CABLE DATA			
	HEIGHT	WIDTH	DEPTH	LENGTH (FT)	STUB CABLE LOCATION	CABLE SHEATH	CONDUCTOR INSULATION
BK1- 100 200 300	25.4	18.3	7.9	10 or 25	Top	Alpeth	PIC
BK1- 400 600							
BK1- 900							
BL1- 100 200 300	25.4	18.3	7.9	10 or 25	Bottom	PASP	PIC
BL1- 400 600							
BL1- 900							

2.02 Figures 1 through 4 show typical features of the B-type cable terminals.

2.03 Detachable upper and lower mounting brackets are furnished for wall or pole mounting (Fig. 3).

2.04 Each B-type cable terminal is equipped with one 24-gauge, full color-coded, PIC stub cable. The stub cables are equipped with air pressure plugs. Additional stub cable data is listed in Table A.

2.05 Drop wires enter the terminals through holes provided in each lower corner of the housings (Fig. 4).

3. LOCATING ON POLES AND WALLS

POLE LOCATIONS

3.01 Place the B-type terminals on poles either at aerial cable level or ground working level as prescribed on detail plans. The preferred location is on the splice side of the pole so the stub cable will not cross the pole to reach the splice. If the terminal in this position overhangs a highway or driveway, locate it on the opposite side of the pole or, if preferable, on the field side of the pole.

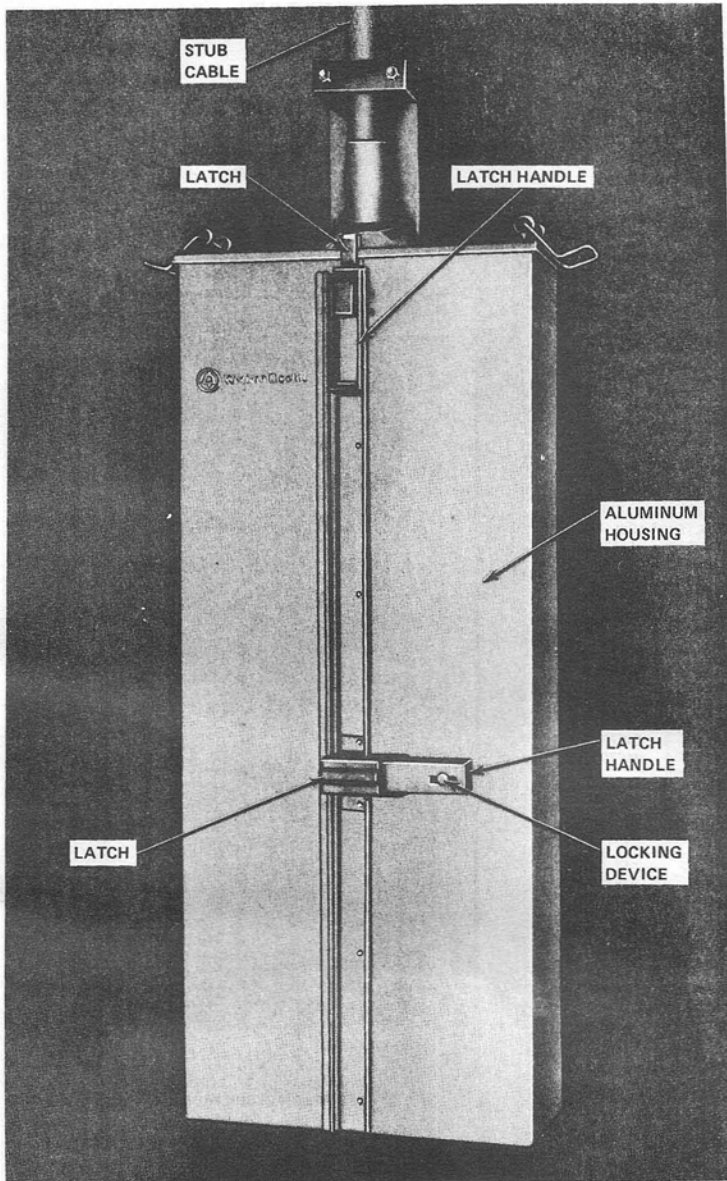


Fig. 1—BK1-600 Cable Terminal

NOTE:

GREEN (FEEDER) DESIGNATION STRIPS ARE FACTORY APPLIED.
 BLUE (DISTRIBUTION) DESIGNATION STRIPS ARE FURNISHED FOR FIELD PLACEMENT. (SEE TABLE).

 DESIGNATION STRIP
 ORDERING INFORMATION

COUNT	COLOR	COMCODE
01-200	GREEN	842705394
	BLUE	842705386
201-400	GREEN	842705378
	BLUE	842705360
401-600	GREEN	842705352
	BLUE	842705345
601-900	GREEN	842705337
	BLUE	842705329

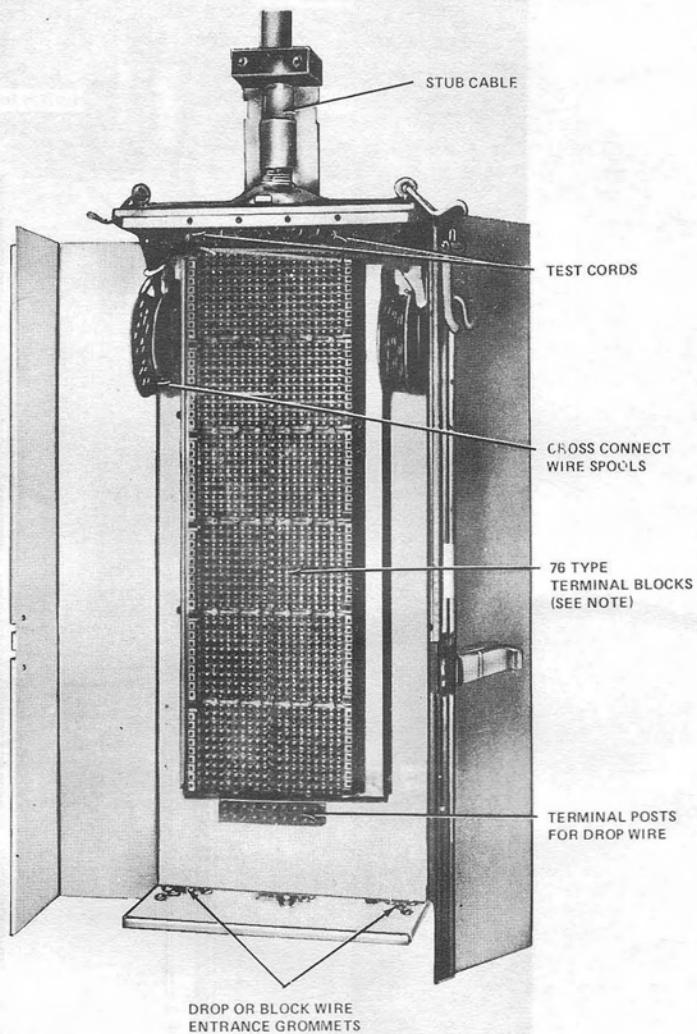
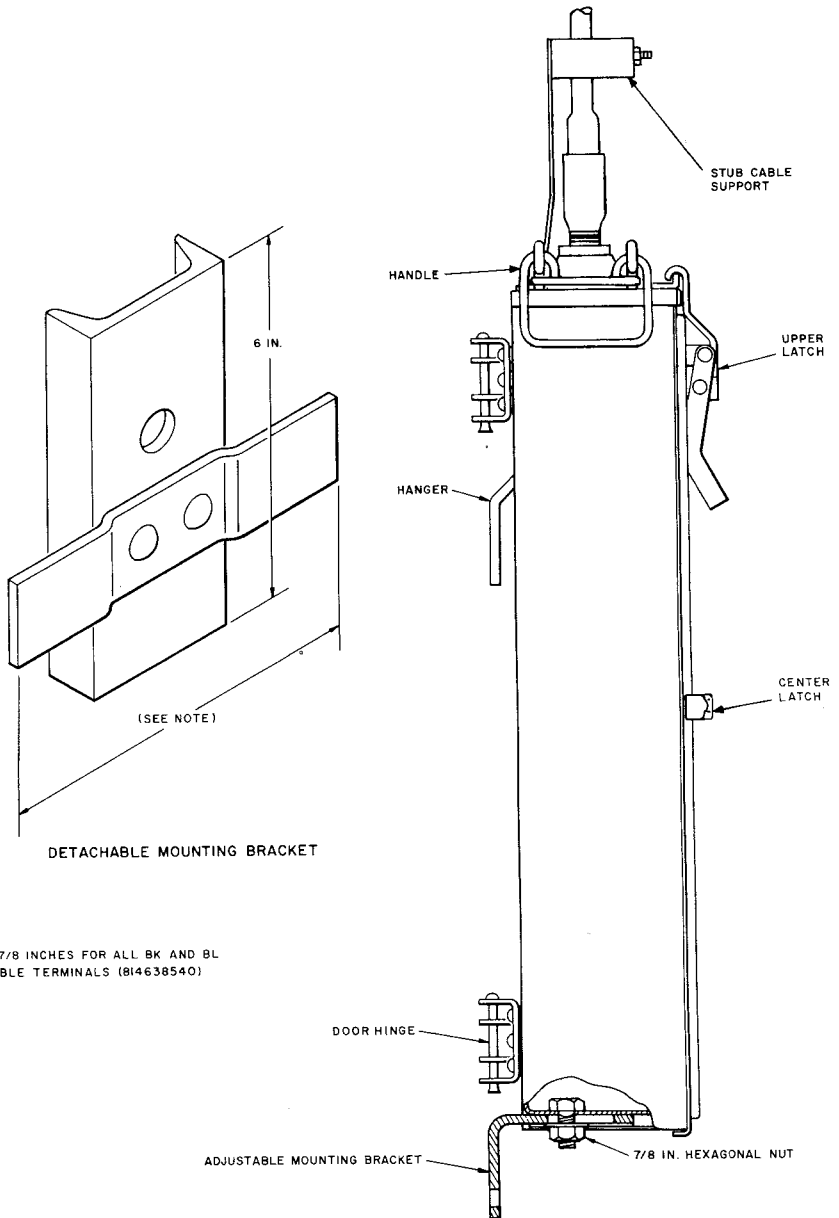


Fig. 2—BK1-600 Cable Terminal—Door Opened



NOTE:
 12 7/8 INCHES FOR ALL BK AND BL
 CABLE TERMINALS (B14638540)

Fig. 3—B-Type Cable Terminal (Side View)†

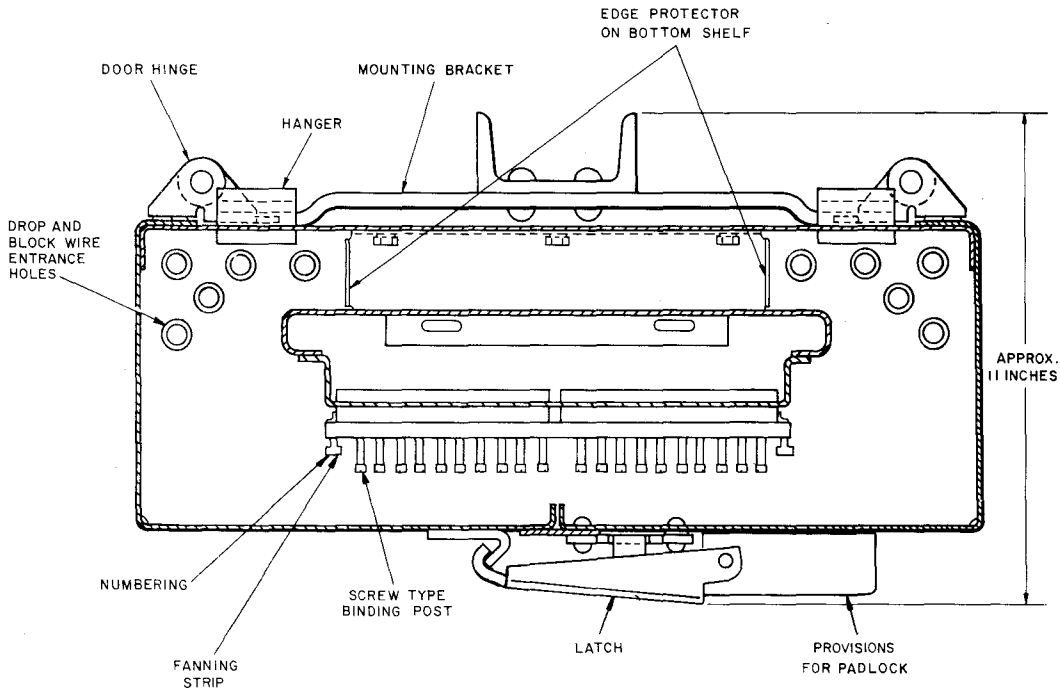


Fig. 4—B-Type Cable Terminal (Cross Section)◀

3.02 In high level construction, locate the through bolt which secures the detachable mounting bracket a minimum of 3 feet 6 inches (maximum 5 feet 6 inches) below the lowest suspension strand (Fig. 5). The bottom of the terminal shall not be less than 10 feet above a sidewalk or less than 15 feet above a driveway.

3.03 In low-level construction, locate the upper mounting bracket of the terminal about 5 feet above grade level. Pole balcony facilities are not required with terminals mounted close to the ground.

WALL LOCATIONS

3.04 Where a terminal is to be mounted on a building wall, locate it in accordance with the detail plans. If the specified terminal location does not appear suitable from the standpoint of construction or

safety or is considered as offering potential maintenance difficulties, notify your supervisor. The terminal should be located:

- (a) With the upper mounting bracket approximately 5 feet above grade level. This height may be increased so the possibility of accidents is reduced or damage to the terminal can be avoided.
- (b) To clear stairways, fire escapes, etc.
- (c) Where electric light and power circuits will be avoided.
- (d) Where it will not be subjected to damage such as may occur near driveways, loading platforms, moving machinery, hoists, doors, shutters, etc.

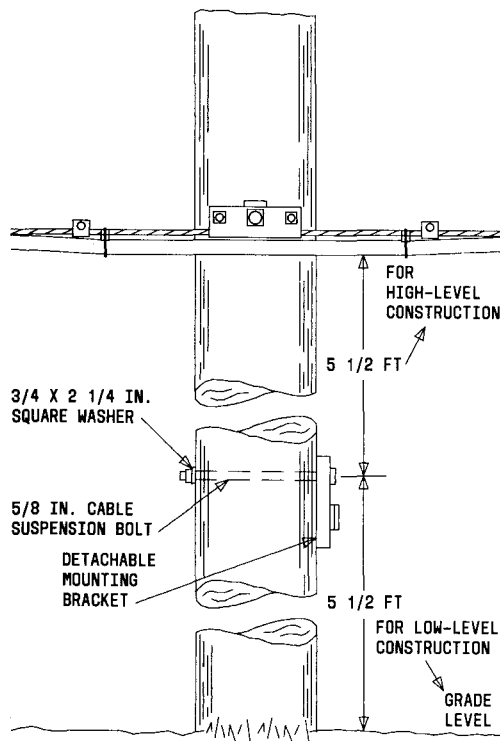


Fig. 5—Bolt Detachable Mounting Bracket to Pole or Stub Pole

- (e) Where leaders, drains, waste and exhaust pipes will be avoided.
- (f) Not less than 20 inches from the corner of a building.
- (g) To provide sufficient space for opening both doors of the terminal.
- (h) On a firm and even surface.

4. MOUNTING ON POLES AND WALLS

4.01 Terminals are furnished with a stub cable coiled at the side of the terminal and strapped to the terminal for protection against damage during

shipment and handling. These straps should not be removed until after the terminal has been permanently mounted.

4.02 To place the terminal:

(a) Secure a rope sling to the handles at the top of the terminal so the top of the sling is above the stub cable support. Raise the terminal by means of block and tackle or a winch line passed through a snatch block secured to the pole, and engage the terminal hangers with the installed mounting bracket. Guide the terminal during hoisting by means of a handline secured to the handles.

(b) Remove the adjustable mounting bracket, which is reversed for packing, and reattach it so the vertical portion extends below the bottom of the terminal.

(c) Pole mounting:

(1) Secure mounting bracket to pole as shown in Fig. 6, exercising care to level the cross member.

(2) Level the terminal, viewing it from the front, and fasten the bracket to the pole with a 3/8- by 4-inch drive screw. Where the terminal is mounted on a masonry wall, attach to the wall by means of a 3/8- by 2-inch hammer drive anchor.

(d) Wall mounting:

(1) Where the terminal is to be placed on a masonry wall, attach mounting bracket with a 1/2 inch machine bolt anchor and a 4 inch galvanized machine bolt or a 1/2 by 3-1/2 inch hammer drive anchor. Place a 9/16 by 1-3/8 inch round washer under the head of the machine bolt or under the collar of the hammer drive anchor.

(2) Level the terminal, viewing it from the side, and tighten the nut of the adjustable mounting bracket with a lineman's wrench.

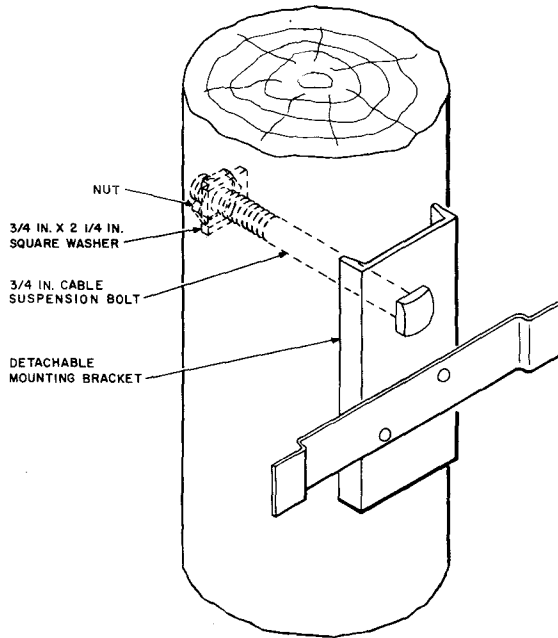


Fig. 6—Securing Detachable Mounting Bracket