

B TERMINALS

B AND C TERMINAL BALCONIES

PLACING

| CONTENTS | PAGE |
|---------------------------------|------|
| 1. GENERAL | 1 |
| 2. B TERMINAL BALCONY | 1 |
| 3. C TERMINAL BALCONY | 3 |
| 4. S POLE SEAT (MD) | 5 |

2.03 The B terminal balcony (Fig. 1) is supplied collapsed into a compact unit with the two side rails, stiffening brace, and step disassembled, the two diagonal braces folded up, and the back assembly folded down against the two horizontal angles. The hardware listed in 2.04 for attaching the balcony to a pole is not furnished. Prepare the balcony for pole mounting as follows.

1. GENERAL

1.01 This section covers the placing of the S pole seat and the B and C terminal balcony in conjunction with B-type cross-connecting terminals and Serving Area Interfaces.

1.02 This section is reissued to include information on C terminal balcony and to show the S pole seat rated manufacture discontinued (MD).

2. B TERMINAL BALCONY

GENERAL

2.01 The B terminal balcony is provided primarily for use with the 200-, 400-, 600-, and 900-pair B-type cable terminals to permit an employee to stand on the seat while working in the upper section of these taller terminals. The balcony may also be used with the shorter 100- and 300-pair B-type cable terminals.

2.02 The current design B terminal balcony has modified shorter straight side rails replacing the curved side rails of the earlier design. This modification allows more room and provides a more comfortable working arrangement for the worker in a sitting position.

(1) Set the collapsed balcony flat on the ground with the back assembly uppermost and remove all tie wires.

(2) Raise the back assembly to a vertical position and attach the two side rails to it and to the horizontal angles with 3/8-inch carriage bolts and lockwashers supplied with the unit. Place bolt heads on the inside and tighten the nuts securely.

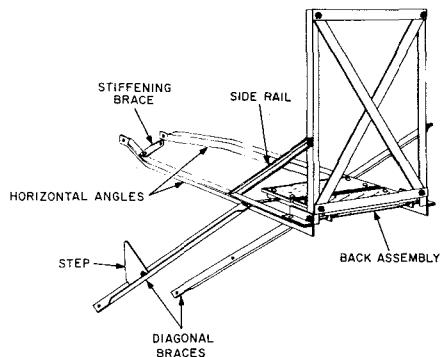


Fig. 1—Assembled B Terminal Balcony

NOTICE

Not for use or disclosure outside the
Bell System except under written agreement

- (3) Two double-ended 5/8-inch bolts located under the wood pole seat join the two horizontal angles. Turn the four outer and four inner nuts on these bolts away from the horizontal angles to allow for free movement of the members when the balcony is mounted on the pole.
- (4) Attach the step to one of the diagonal braces with the 1/2-inch bolt and lockwasher also supplied. Position the step on the outside of the brace and the bolt head on the inside.
- (5) Attach the stiffening brace shown in Fig. 1 to the horizontal brace that will be on the side of the pole normally used for access to the balcony. Use the 3/8- by 1-inch carriage bolt, nut, and lockwasher supplied.

2.04 Pole Mounting: Refer to Fig. 2 and proceed as follows:

- (1) Bore an 11/16-inch hole in the side of the pole 4 inches below the bottom of the B-type terminal.
- (2) Raise the balcony into position and attach the horizontal angles to the pole with a 5/8-inch cable suspension bolt inserted into the 11/16-inch hole. Provide curved washers between the ends of the angles and the pole.
- (3) Adjust the level of the pole seat and then spot the location of the diagonal brace hole below that of the horizontal members. On small diameter poles bore an 11/16-inch hole in the pole and attach the diagonal braces with a 5/8-inch cable suspension bolt and curved washers. On large diameter poles attach the diagonal braces with 1/2- by 4-1/2 inch drive screws and curved washers.

- (4) Center the wood seat between horizontal angles; adjust the eight nuts on the double-ended bolts against the sides of the horizontal angles fingertight, and then tighten them securely with a wrench.
- (5) Tighten the nuts of the 3/8-inch carriage bolts which clamp the two short angles to the horizontal angles and the back assembly.
- (6) Fasten the stiffening brace to the pole with a 1/2- by 4-1/2 inch drive screw.
- (7) The wood pole seat should be left turned downward to avoid possible accumulation of snow or ice.

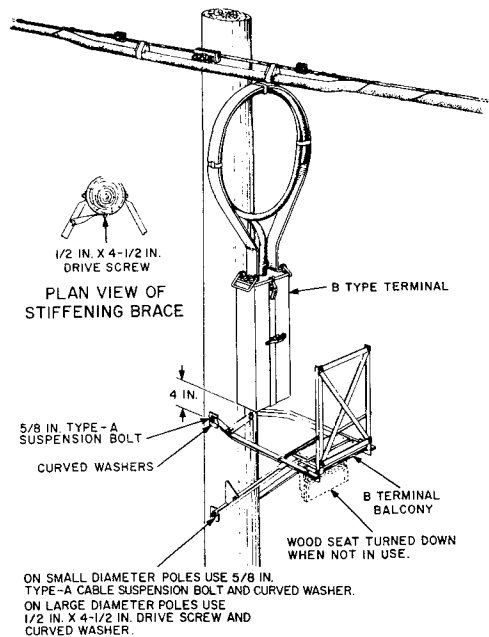


Fig. 2—Pole Mounted B Terminal Balcony

3. C TERMINAL BALCONY

3.01 The C terminal balcony (Fig. 3 and 4) is identical to the B terminal balcony without a back. It is intended for use at low height feeder

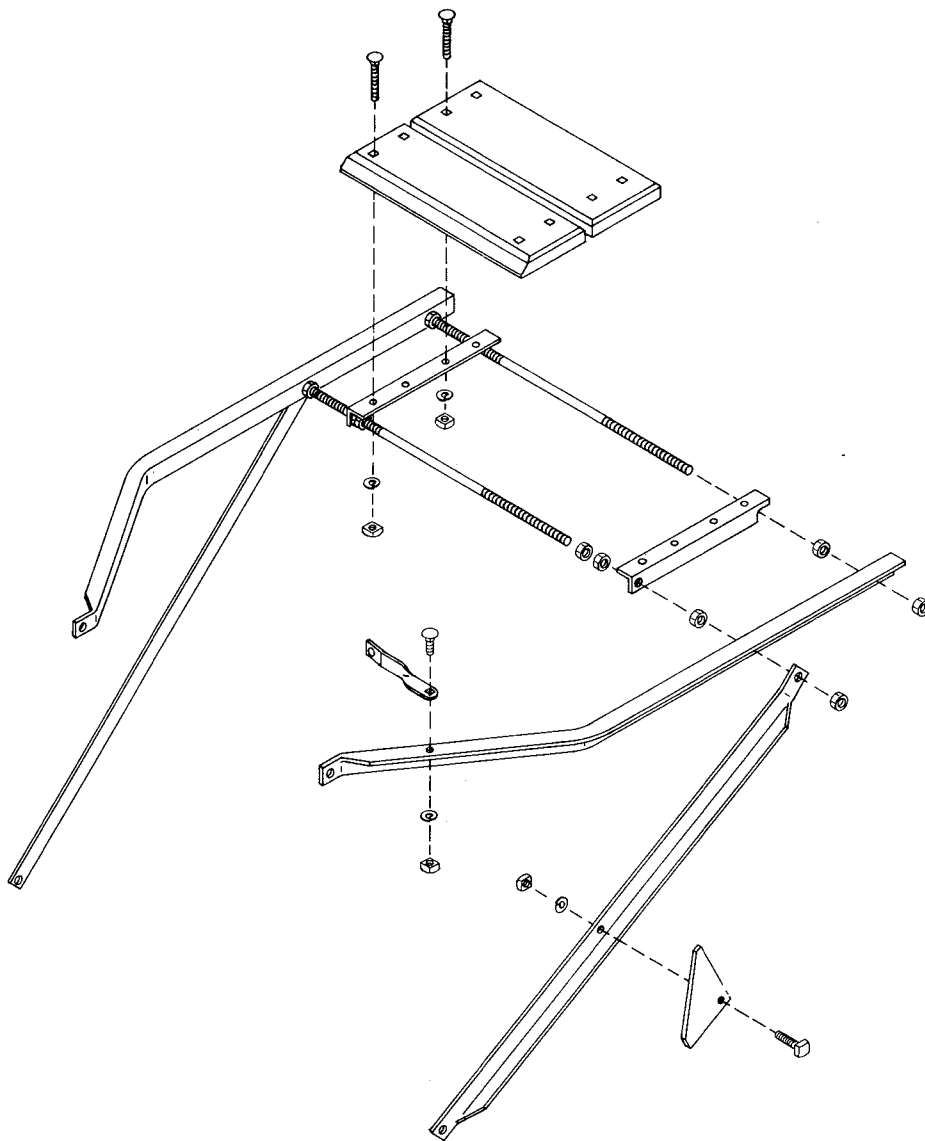


Fig. 3—Assembly of C Terminal Balcony

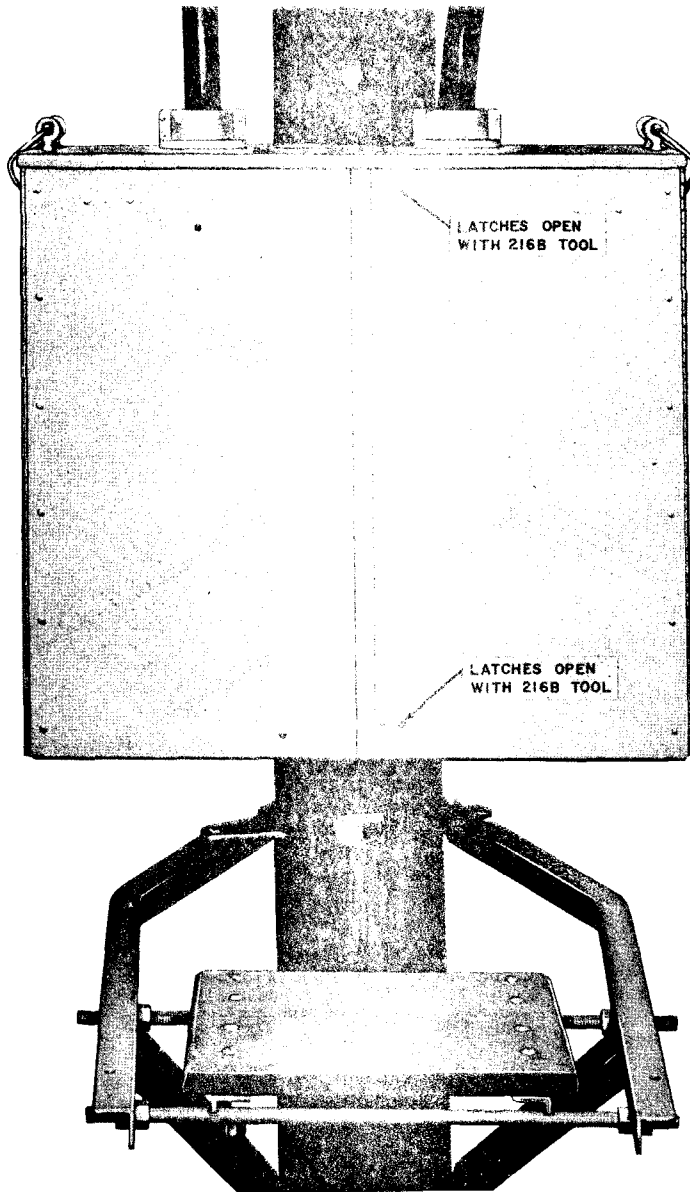


Fig. 4—Assembled C Terminal Balcony (Shown with B aerial interface)

distribution interfaces where work operations are performed from the sitting position. (See Table A)

TABLE A
C TERMINAL BALCONY APPLICATION

| USE C TERMINAL BALCONY WITH: | DIMENSIONS (INCHES) | | |
|------------------------------|---------------------|---------|-------|
| | HEIGHT | WIDTH | DEPTH |
| B Aerial Interface, AT-8685 | 29 1/2 | 32 | 9 3/4 |
| BH 100 Cable Terminal | 26 7/8 | 10 3/16 | 8 1/2 |
| 101A1-100 Cable Terminal | 27 | 10 1/2 | 4 |
| 29A4 Cabinet | 26 7/8 | 10 3/16 | 8 1/2 |
| 5A3 Closure | 22 | 10 1/2 | 4 |
| 5B3 Closure | 27 | 10 1/2 | 4 |

4. S POLE SEAT (MD)

4.01 The superseded S pole seat was used with the shorter B-type cable terminals (100- and 300-pair size) because all binding posts in these terminals are within easy reach of employee in a sitting position. The S pole seat is shown in Fig. 5.

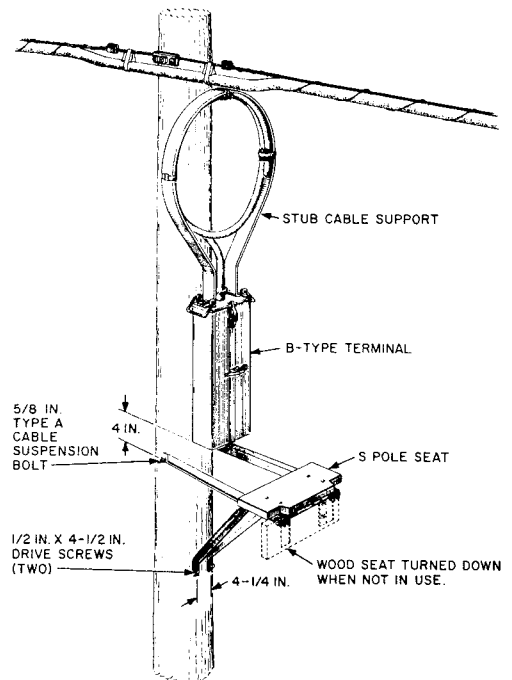


Fig. 5—S Pole Seat