

# TELEPHONE EXCHANGE AREAS

## CALIFORNIA PUBLIC UTILITIES COMMISSION

### LEGEND

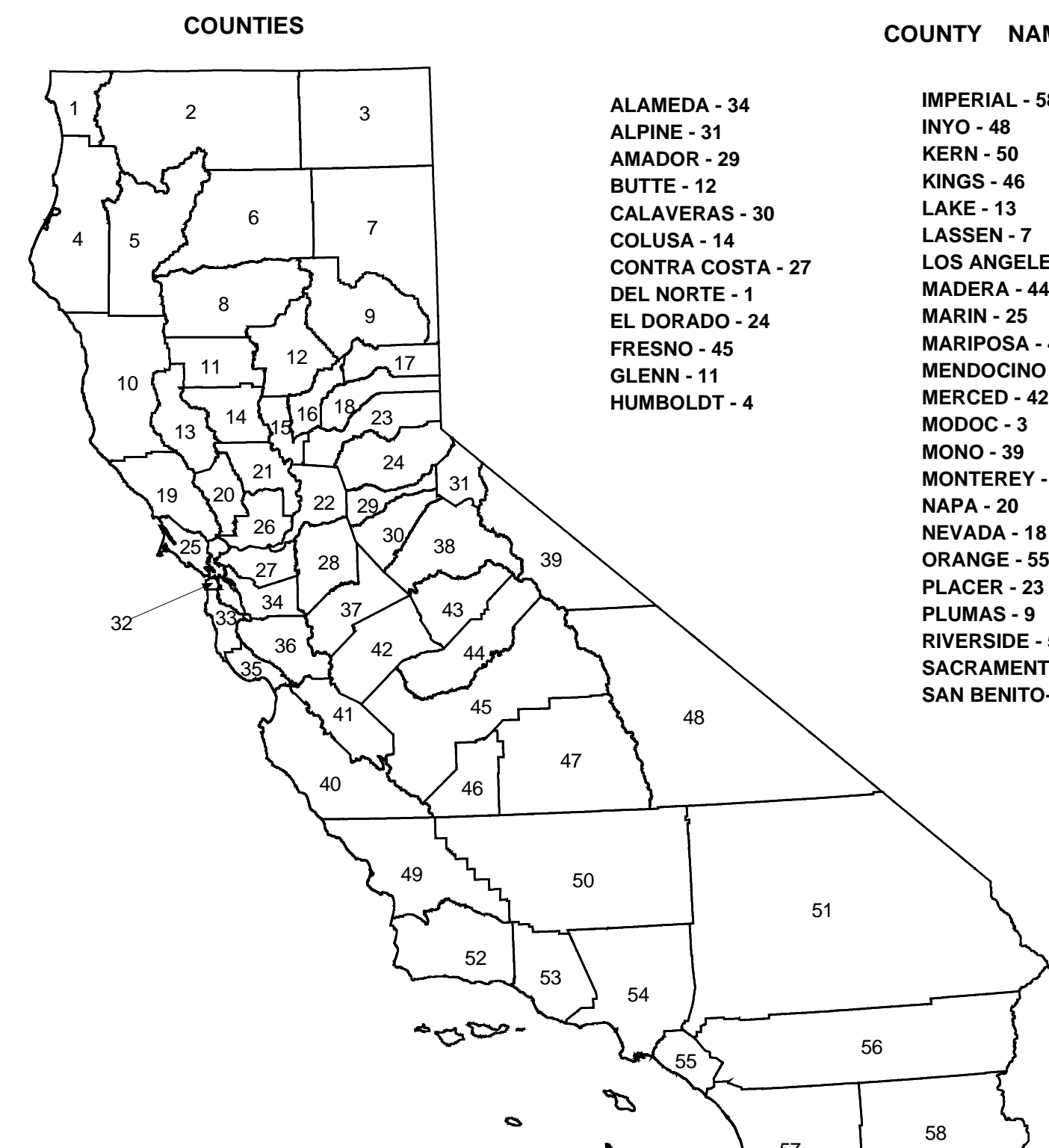
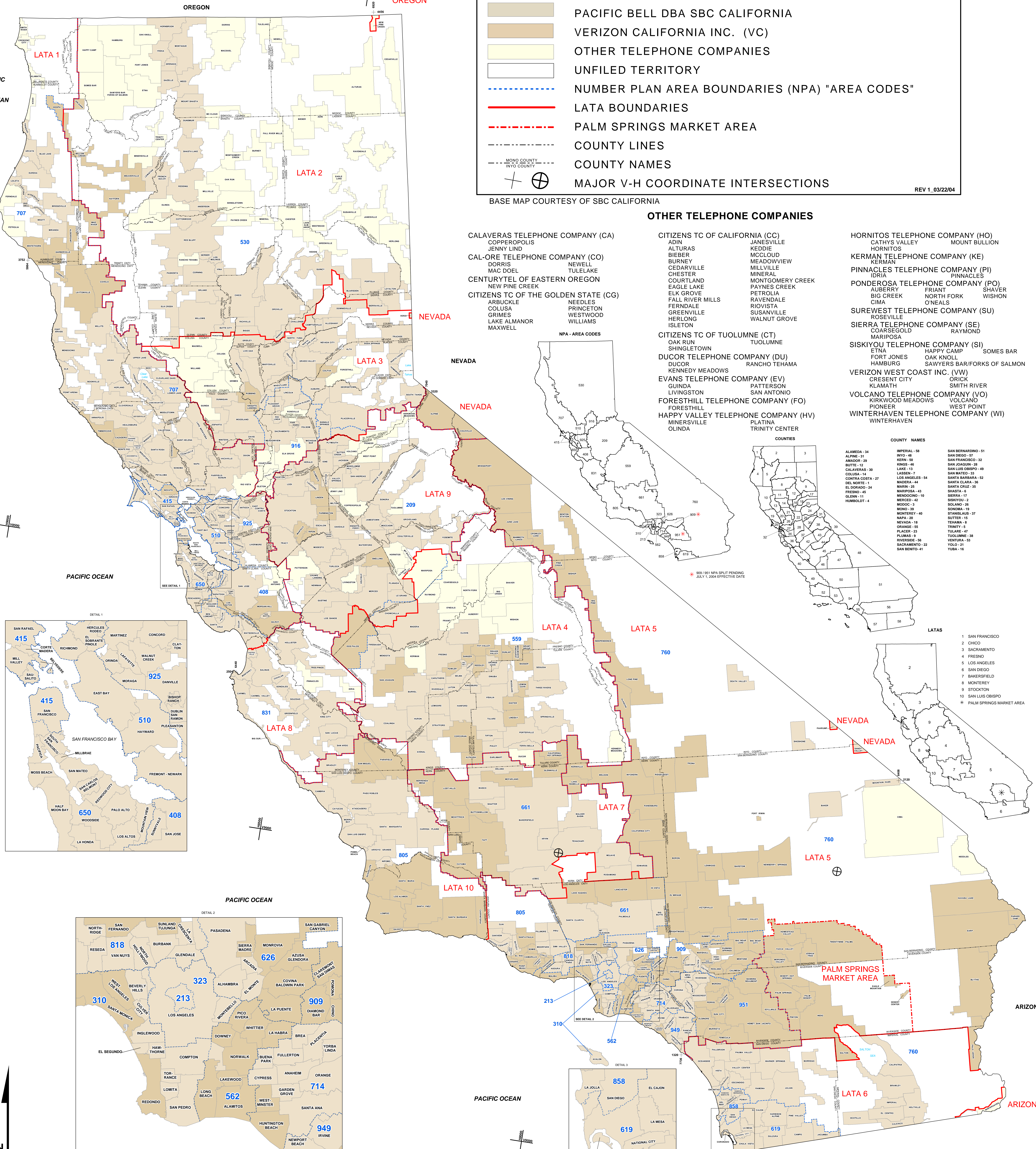
	PACIFIC BELL DBA SBC CALIFORNIA
	VERIZON CALIFORNIA INC. (VC)
	OTHER TELEPHONE COMPANIES
	UNFILED TERRITORY
	NUMBER PLAN AREA BOUNDARIES (NPA) "AREA CODES"
	LATA BOUNDARIES
	PALM SPRINGS MARKET AREA
	COUNTY LINES
	COUNTY NAMES
	MAJOR V-H COORDINATE INTERSECTIONS

REV 1\_03/22/04

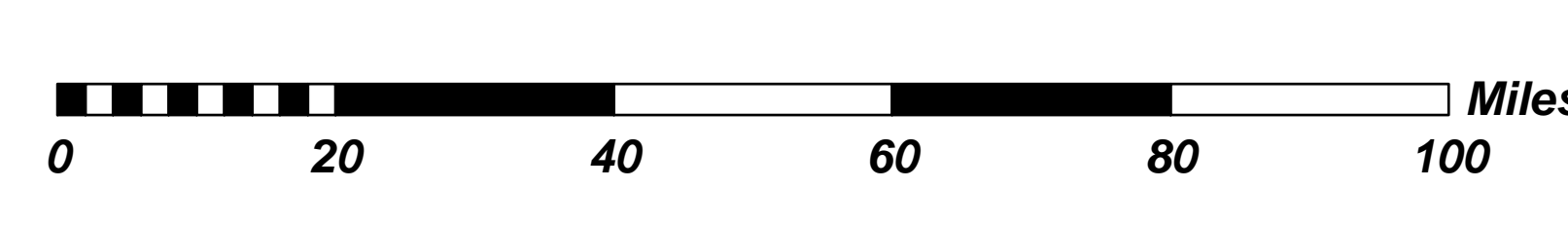
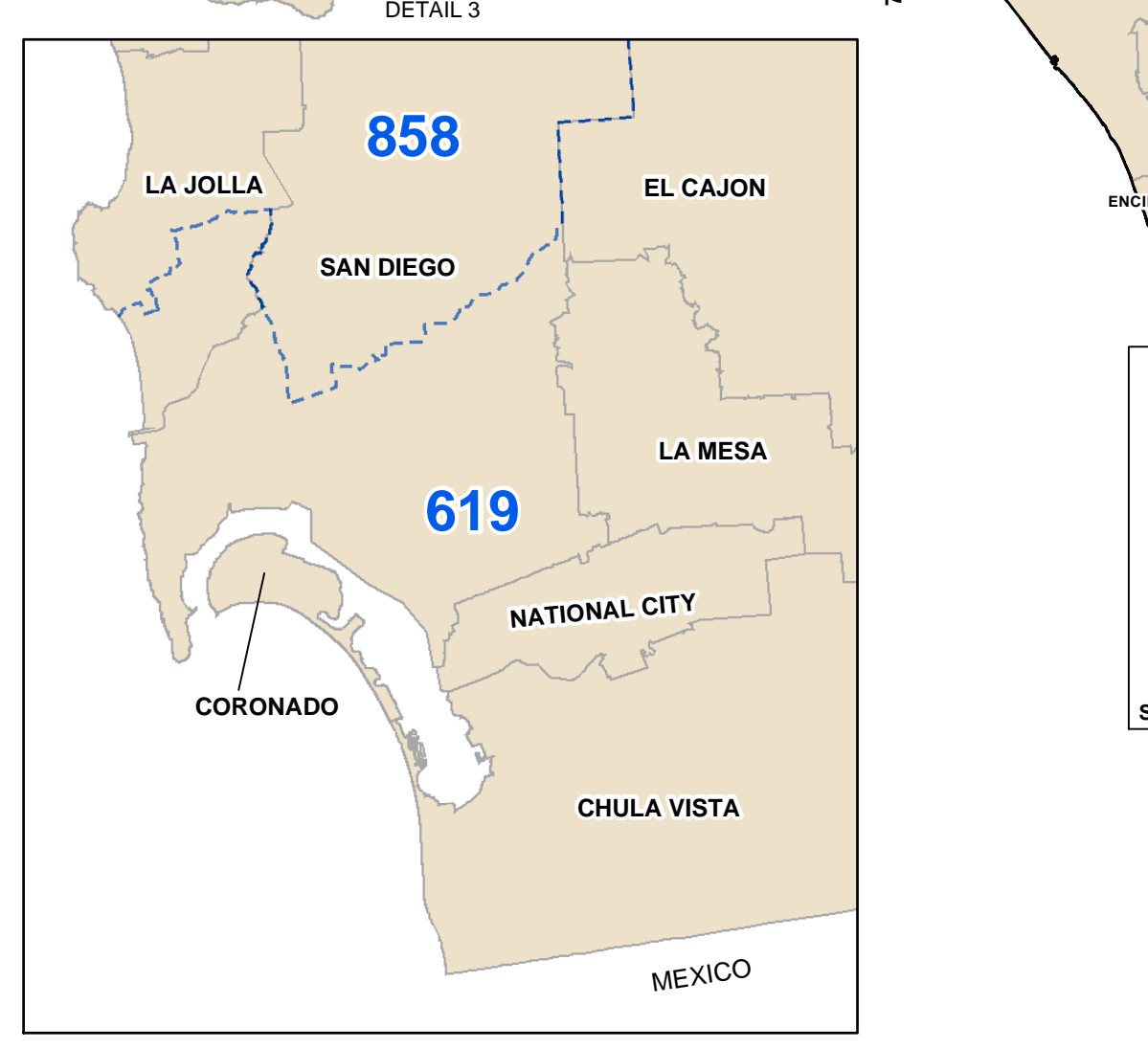
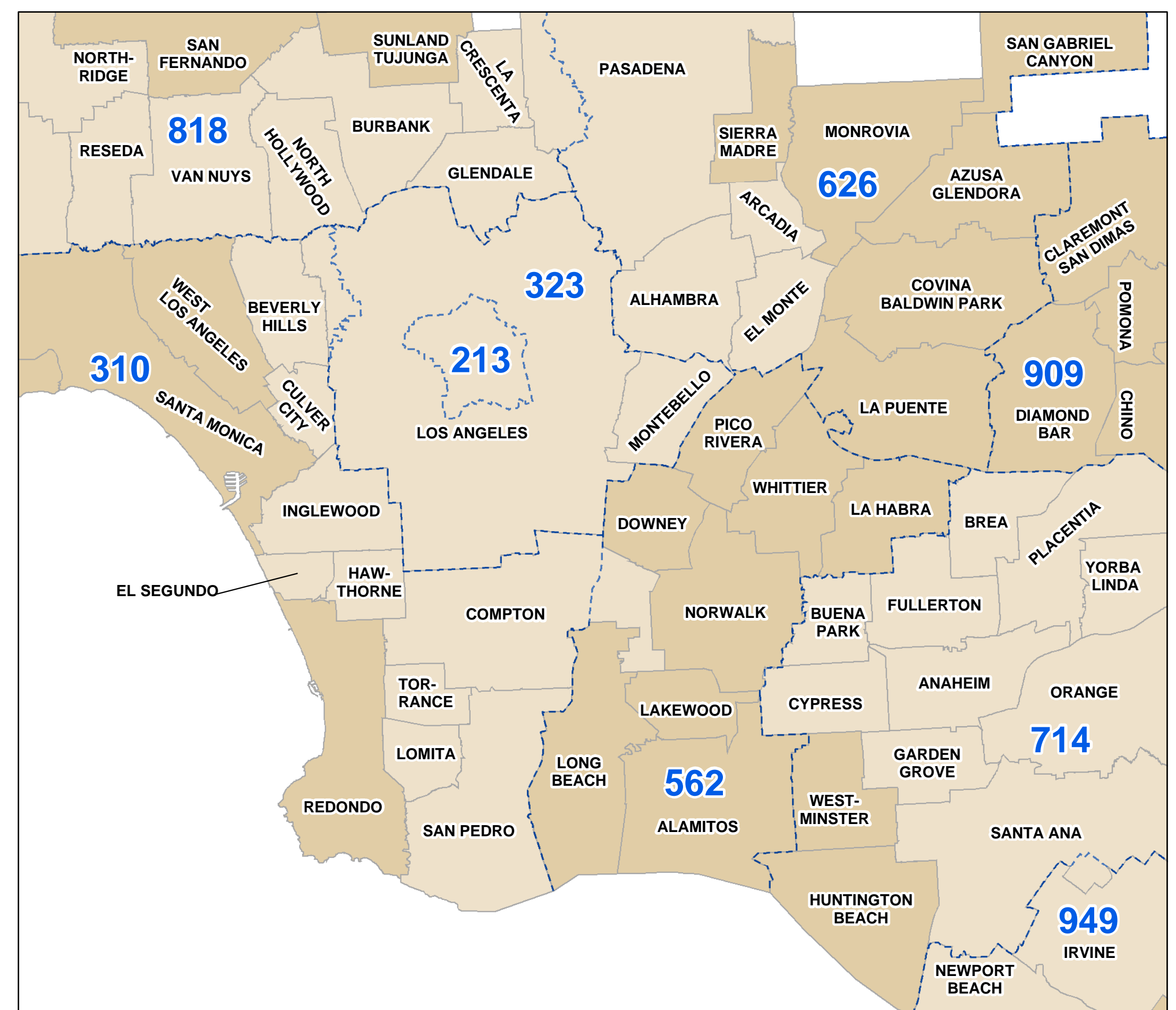
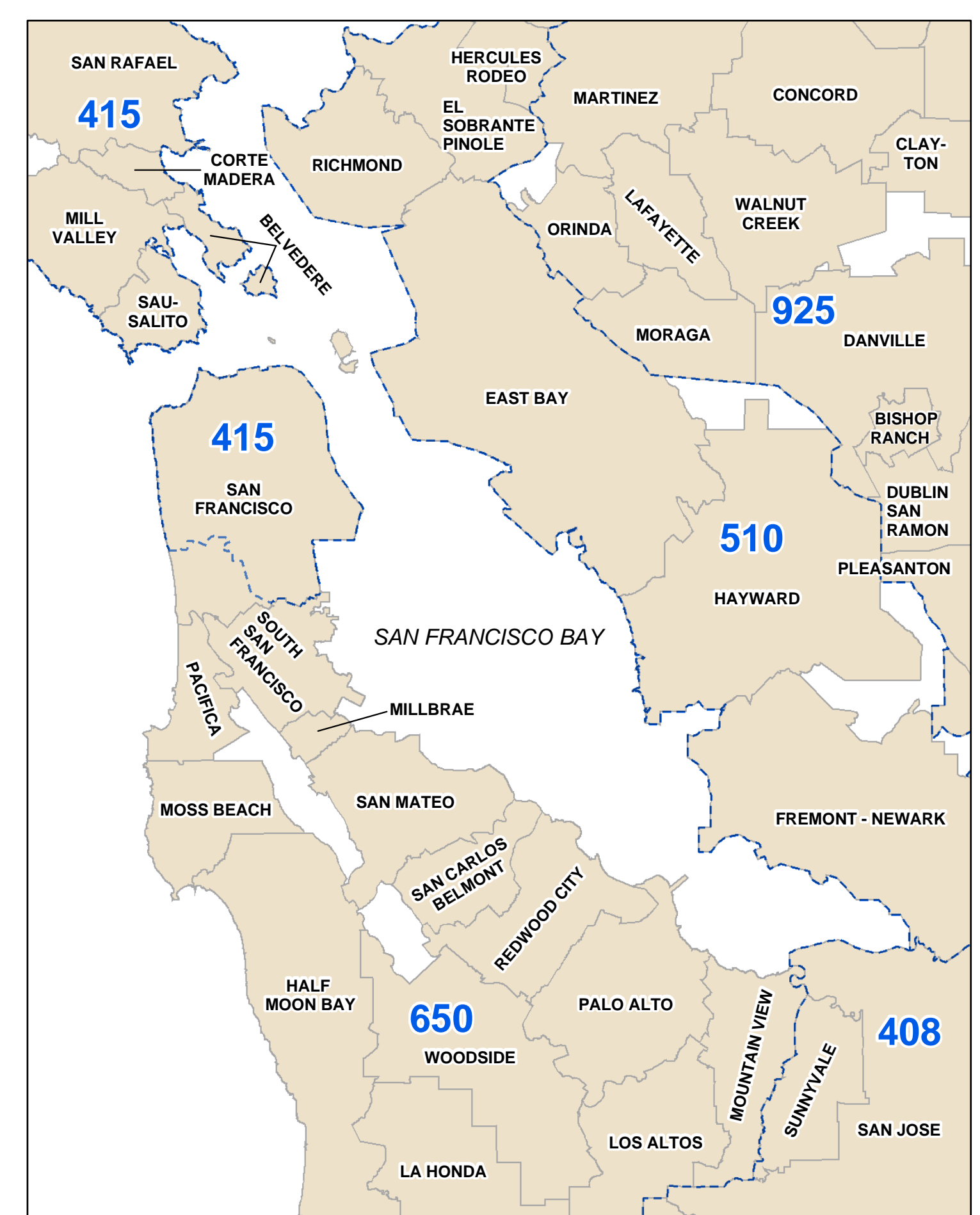
BASE MAP COURTESY OF SBC CALIFORNIA

### OTHER TELEPHONE COMPANIES

- |   |  |  |   |
|---|--|--|---|
| <p>CALAVERAS TELEPHONE COMPANY (CA)<br/>ADIN<br/>COPPERPOLIS<br/>JENNY LIND<br/>CAL-ORE TELEPHONE COMPANY (CO)<br/>DORRIS<br/>MAC DOEL<br/>CENTURYTEL OF EASTERN OREGON<br/>NEW PINE CREEK<br/>CITIZENS TC OF THE GOLDEN STATE (CG)<br/>ARBUCKLE<br/>COLUSA<br/>GRIMES<br/>LAKE ALMANOR<br/>MAXWELL</p> | <p>CITIZENS TC OF CALIFORNIA (CC)<br/>ADIN<br/>ALTURAS<br/>BIEBER<br/>BURNBY<br/>CEDARVILLE<br/>CHESTER<br/>COURTLAND<br/>EAGLE LAKE<br/>ELK GROVE<br/>FALL RIVER MILLS<br/>FERNDALE<br/>GREENVILLE<br/>HERLONG<br/>ISLETON<br/>CITIZENS TC OF TUOLUMNE (CT)<br/>OAK RUN<br/>SHINGLETOWN<br/>DUCOR TELEPHONE COMPANY (DU)<br/>DUCOR<br/>KENNEDY MEADOWS<br/>EVANS TELEPHONE COMPANY (EV)<br/>GUINDA<br/>LIVINGSTON<br/>FORESTHILL TELEPHONE COMPANY (FO)<br/>FORESTHILL<br/>HAPPY VALLEY TELEPHONE COMPANY (HV)<br/>MINERSVILLE<br/>OLINDA</p> | <p>JANESVILLE<br/>KEDDIE<br/>MC CLOUD<br/>MEADOWVIEW<br/>MILLVILLE<br/>MINERAL<br/>MONTGOMERY CREEK<br/>PAYNES CREEK<br/>PETROLIA<br/>RAVENDALE<br/>RIVISTA<br/>SUSANVILLE<br/>WALNUT GROVE<br/>TUOLUMNE<br/>TUOLUMNE<br/>RANCHO TEHAMA<br/>PATTERSON<br/>SAN ANTONIO<br/>PLATINA<br/>TRINITY CENTER</p> | <p>HORNITOS TELEPHONE COMPANY (HO)<br/>CATHYS VALLEY<br/>MOUNT BULLION<br/>HORNITOS<br/>KERNAN TELEPHONE COMPANY (KE)<br/>KERNAN<br/>PINNACLES TELEPHONE COMPANY (PI)<br/>IDRIA<br/>PINNACLES<br/>PONDEROSA TELEPHONE COMPANY (PO)<br/>ALBERRY<br/>BIG CREEK<br/>NORTH FORK<br/>WISHON<br/>O'NEALS<br/>SUREWEST TELEPHONE COMPANY (SU)<br/>ROSEVILLE<br/>SIERRA TELEPHONE COMPANY (SE)<br/>COARSEGOLD<br/>RAYMOND<br/>SISKIYOU TELEPHONE COMPANY (SI)<br/>ETNA<br/>HAPPY CAMP<br/>SOMES BAR<br/>FORT JONES<br/>OAK KNOLL<br/>HAMBURG<br/>SAWYERS BAR/FORKS OF SALMON<br/>VERIZON WEST COAST INC. (VW)<br/>CRESENT CITY<br/>KLAMATH<br/>SMITH RIVER<br/>VOLCANO TELEPHONE COMPANY (VO)<br/>KIRKWOOD MEADOWS<br/>VOLCANO<br/>PIONEER<br/>WINTERHAVEN TELEPHONE COMPANY (WI)<br/>WINTERHAVEN</p> |
|---|--|--|---|



COUNTY NAMES	LATAS
ALABAMA - 34	1 SAN FRANCISCO
ALPINE - 31	2 CHICO
AMADOR - 29	3 SACRAMENTO
BUTTE - 12	4 FRESNO
CALAVERAS - 30	5 LOS ANGELES
COLUSA - 14	6 SAN DIEGO
CONTRA COSTA - 27	7 BAKERSFIELD
DEL NORTE - 11	8 MONTEREY
EL DORADO - 24	9 STOCKTON
FRESNO - 45	10 SAN LUIS OBISPO
GLENN - 11	* PALM SPRINGS MARKET AREA
HUMBOLDT - 4	
IMPERIAL - 58	
INYO - 48	
KERN - 55	
KINGS - 46	
LAKE - 15	
LA SERRA - 7	
LOS ANGELES - 54	
MADERA - 44	
MARIN - 25	
MARIPOSA - 44	
MENDOCINO - 10	
MERCED - 42	
MODOC - 3	
MONTE - 28	
MONTEREY - 40	
NAVAJO - 18	
ORANGE - 55	
PALMER - 47	
PALM SPRINGS - 9	
PLUMAS - 9	
RIVERSIDE - 56	
SACRAMENTO - 22	
SAN BERNARDINO - 51	
SAN DIEGO - 57	
SAN FRANCISCO - 32	
SAN JOAQUIN - 28	
SAN LUIS OBISPO - 49	
SAN MATEO - 33	
SANTA BARBARA - 52	
SANTA CLARA - 36	
SIERRA - 17	
SHASTA - 2	
SISKIYOU - 2	
SOLANO - 26	
SONOMA - 19	
STANISLAUS - 37	
SUTTER - 15	
TEHAMA - 8	
TRINITY - 5	
TULARE - 47	
TUOLUMNE - 38	
VENTURA - 53	
YOLO - 21	
YUBA - 16	



Copyright 2004, All Rights Reserved by California Public Utilities Commission. This map is a reproduction of the map published by the Commission in 2004. The Commission is not responsible for any errors or omissions in this map. The Commission is not responsible for any damages, including consequential damages, arising from the use of this map. The Commission is not responsible for any claims, including consequential claims, arising from the use of this map. The Commission is not responsible for any losses, including consequential losses, arising from the use of this map. The Commission is not responsible for any injuries, including consequential injuries, arising from the use of this map. The Commission is not responsible for any deaths, including consequential deaths, arising from the use of this map. The Commission is not responsible for any other damages, including consequential damages, arising from the use of this map. The Commission is not responsible for any other claims, including consequential claims, arising from the use of this map. The Commission is not responsible for any other losses, including consequential losses, arising from the use of this map. The Commission is not responsible for any other injuries, including consequential injuries, arising from the use of this map. The Commission is not responsible for any other deaths, including consequential deaths, arising from the use of this map. The Commission is not responsible for any other damages, including consequential damages, arising from the use of this map. The Commission is not responsible for any other claims, including consequential claims, arising from the use of this map. The Commission is not responsible for any other losses, including consequential losses, arising from the use of this map. The Commission is not responsible for any other injuries, including consequential injuries, arising from the use of this map. The Commission is not responsible for any other deaths, including consequential deaths, arising from the use of this map.