

**Engineering Unit Support
Integrated Network Implementation Planning**

Duane Engstrom
Manager (S2510000)
(313) 983-8450 (MI)
(708) 248-5444 (AC)
PIN 5382806
Mobile: (313) 980-3792

Maggie Conn
Secretary
(313) 983-8452

Fax: (313) 983-8460 (MI)
(708) 248-6046 (AC)

Karl Smith
Manager/OH (S2511000)
LEIS User Support
- East
(614) 223-8445
Pin 5382896
Fax: (614) 223-5909

Linda Peck
Manager/IL
LEIS User Support
- West
(312) 727-1697
Pin 8798301
(Fax) (312) 727-8483

Randy Bradley
(317) 265-2335/IN
• Planning Methods
• HQ Administration
• LEIM Support

Richard Hahn
(216) 822-4407/OH
• Support for:
PLAN, ESM, CARL,
McFig, LAD, LATIS,
DART, LESS, LEIM

Cathy Griggs
(317) 265-8664/IN
• LEAD/Assignment
Support

Tammy Swehla
(312) 727-6428/IL
• LEIM Support
• DLC Forecast
Support

Cathie Pankowski
(414) 678-2245/WI
• All Modules
(except LEIM)

Terri Unser
(414) 878-3444/WI
• LEIM Support/Input

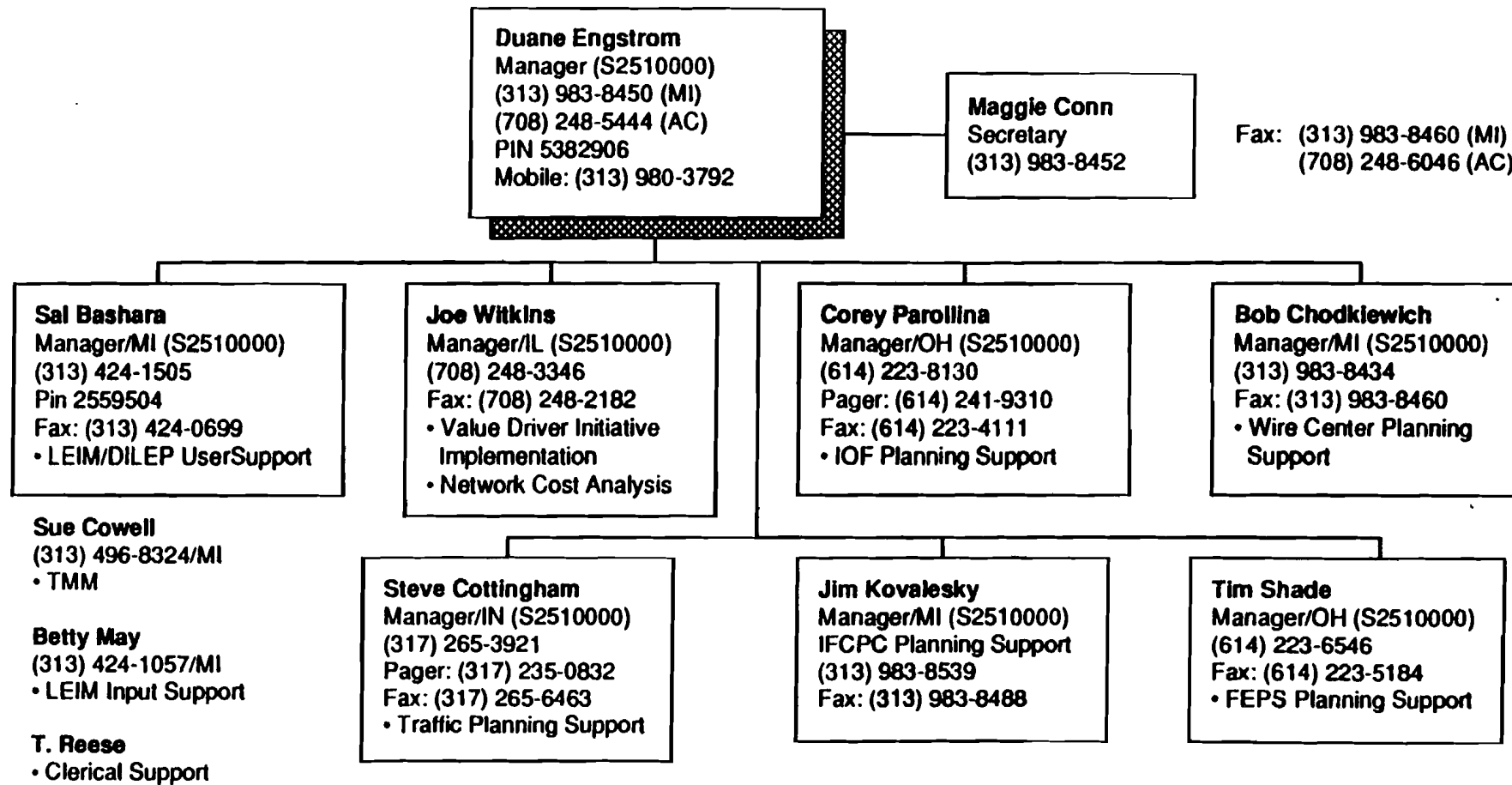
Kim Jacobsen
(312) 727-7778/IL
• Support for:
PLAN, ESM,
LEAD, DILEP

Afzal Sayyed
(312) 727-7817/IL
• LEIS Hotline/Admin.

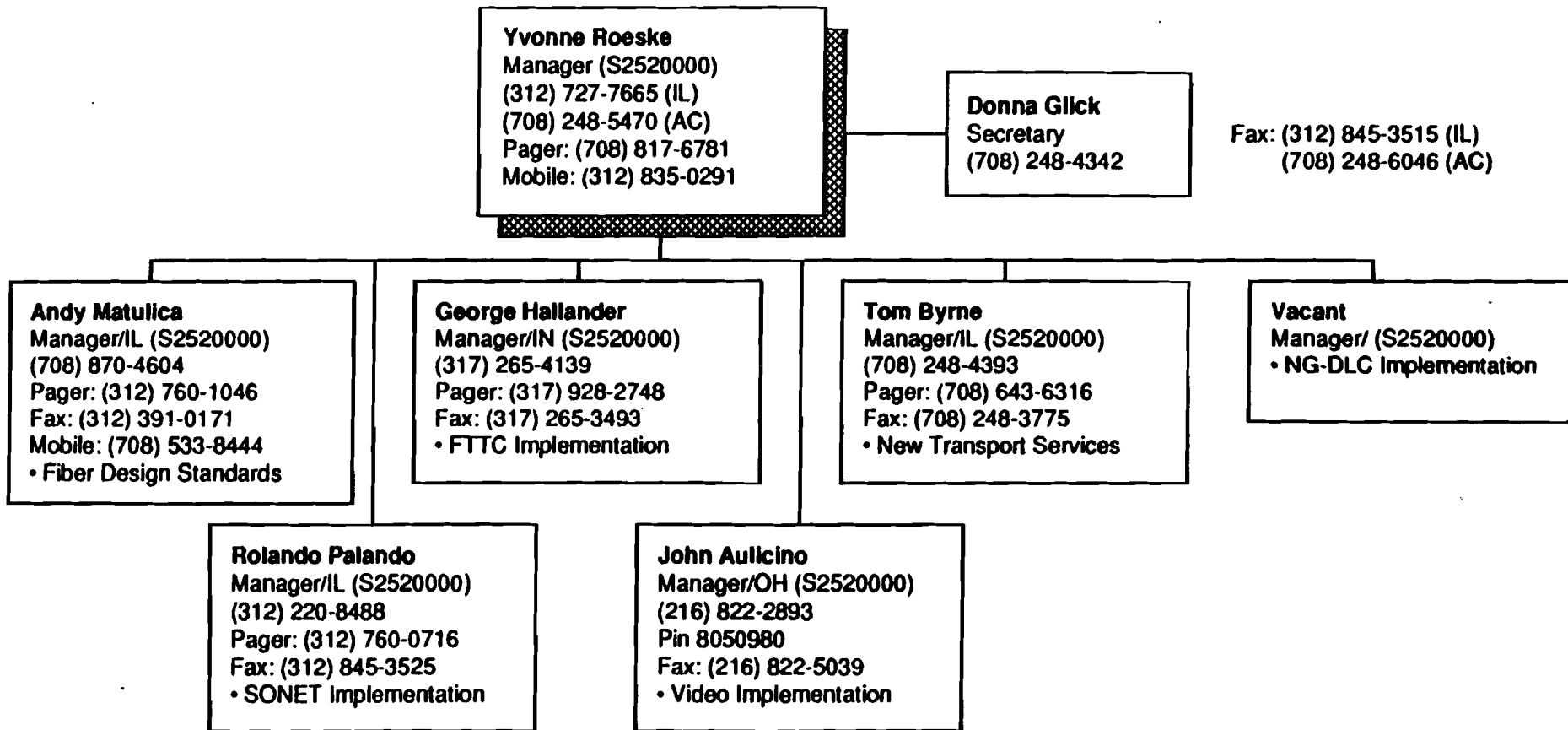
~~**Ty Barnes**
(312) 727-7988/IL
• LATIS Support
• HQ Administration
• Local Applications
• DART Support
• (LPIE 2 Support)~~

Transferred

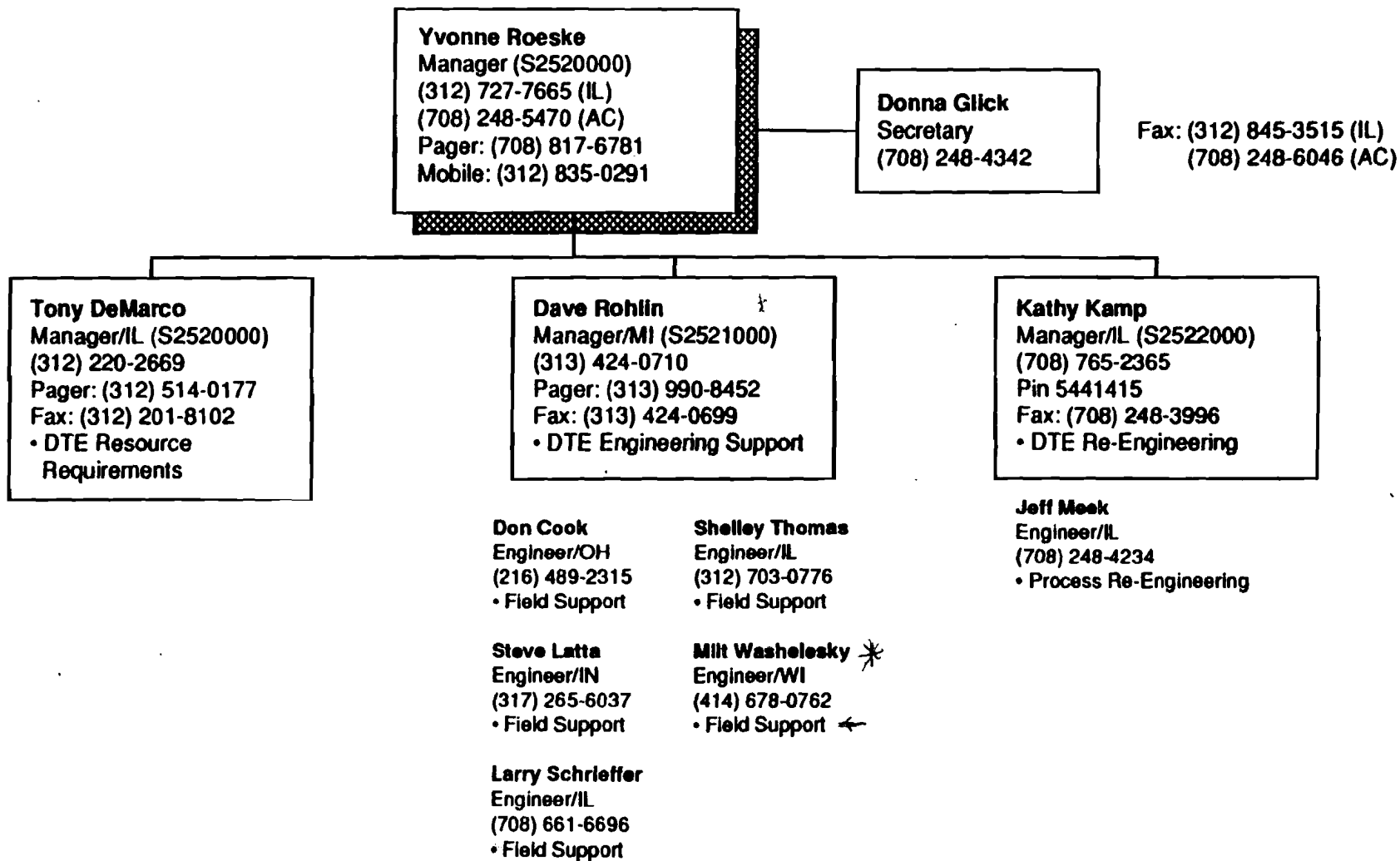
Engineering Unit Support
Integrated Network Implementation Planning



**Engineering Unit Support
Technology Implementation**

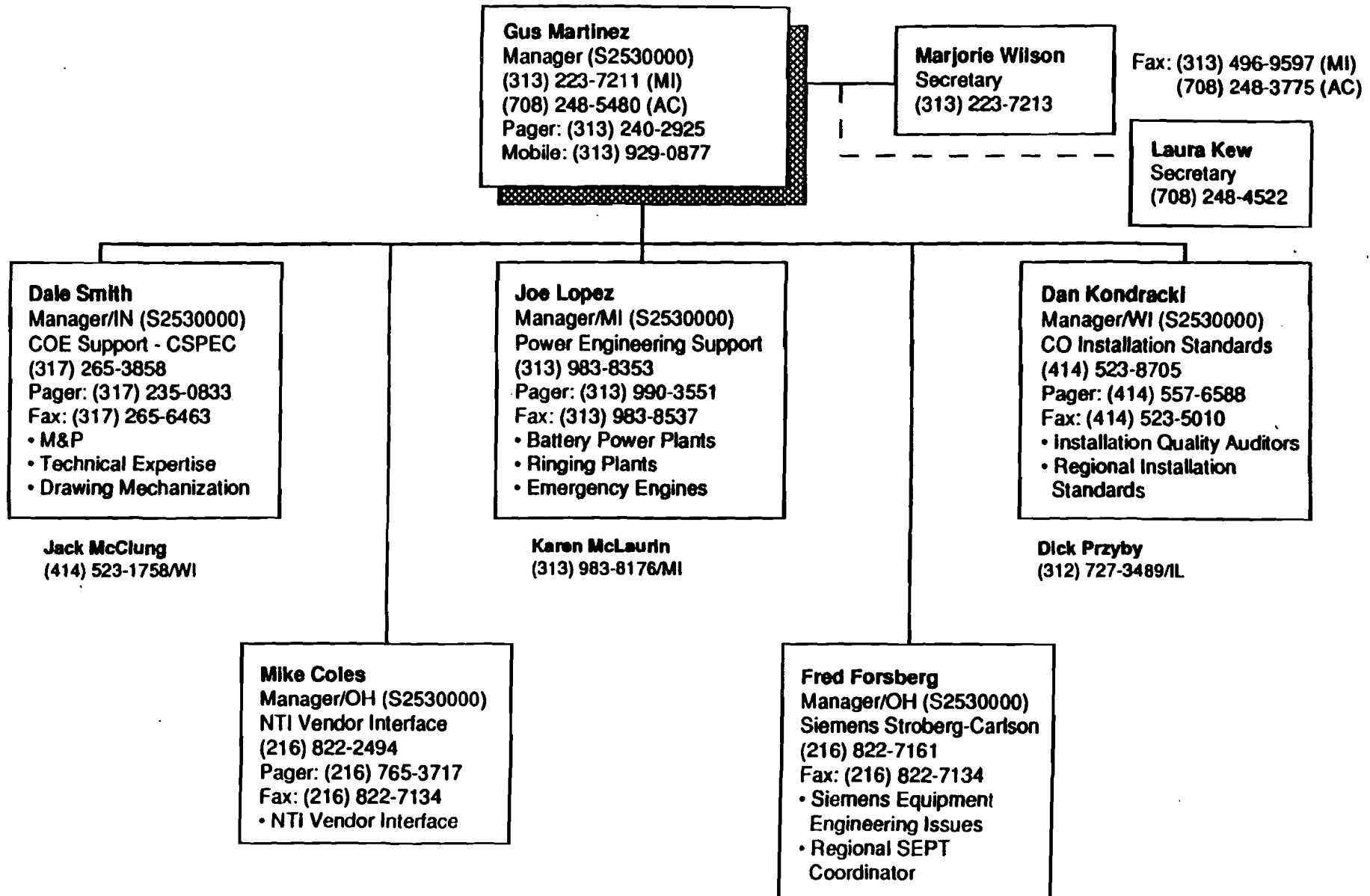


**Engineering Unit Support
Technology Implementation**



**Engineering Unit Support
Central Office Engineering Support**

Page 7
10/15/93



**Engineering Unit Support
Central Office Engineering Support**

Gus Martinez
Manager (S2530000)
(313) 223-7211 (MI)
(708) 248-5480 (AC)
Pager: (313) 240-2925
Mobile: (313) 929-0877

Marjorie Wilson
Secretary
(313) 223-7213

Fax: (313) 496-9597 (MI)
(708) 248-3775 (AC)

Laura Kew
Secretary
(708) 248-4522

Kathy Mack
Manager/IL (S2531000)
PICS/DCPR Support
(708) 248-4335
Fax: (708) 248-3941
• EDI
• Regional Reports
• System Consolidation

Celeste Ellis
(313) 223-8168/MI

Linda Borowski
(414) 523-8692/WI

Dennis Muller
(313) 424-4542/MI

Judy Everhart
(313) 983-8085/MI

Bruce Barnes
Manager/IL (S2532000)
PICS/DCPR Support
(708) 248-4538
Fax: (708) 248-3941
• M&P/Training
• Financial Tables/DRMA
• PICS WISE/RISE

Bernie Russell
(708) 248-6487/IL

Bonnie Hall
(614) 223-6668/OH

Peggy Green
(313) 983-8235/MI

Jana Yezak
(313) 983-8085/MI

Vacant

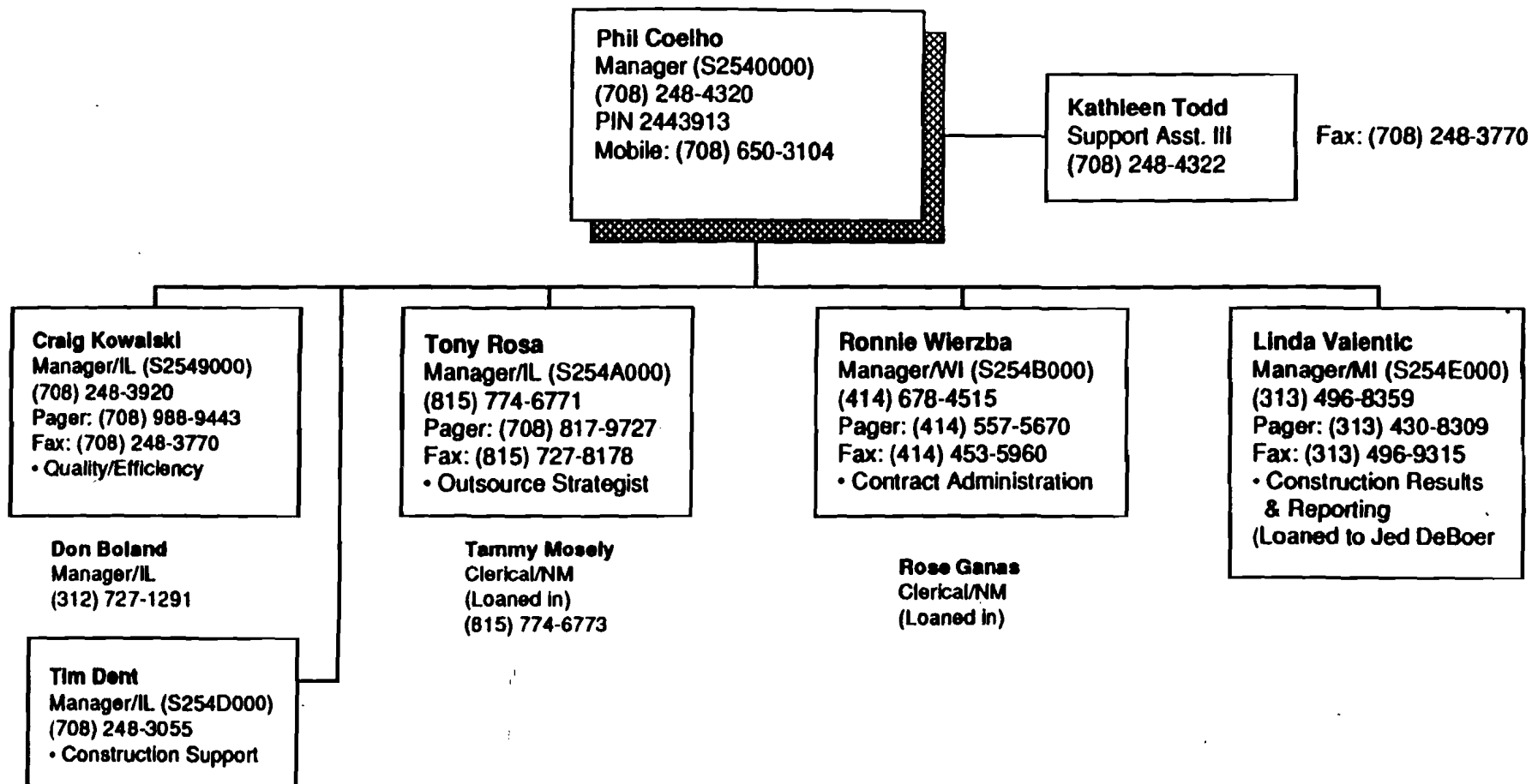
Firooz Ghanbarzadeh
Manager/WI (S2533000)
Mechanization
(414) 523-1581
Pager: (414) 557-5396
Fax: (414) 523-5010
• SOE Support
• Mechanized Processes
• Offer Mechanized
Solutions

Karl Smth
(312) 727-2483/IL

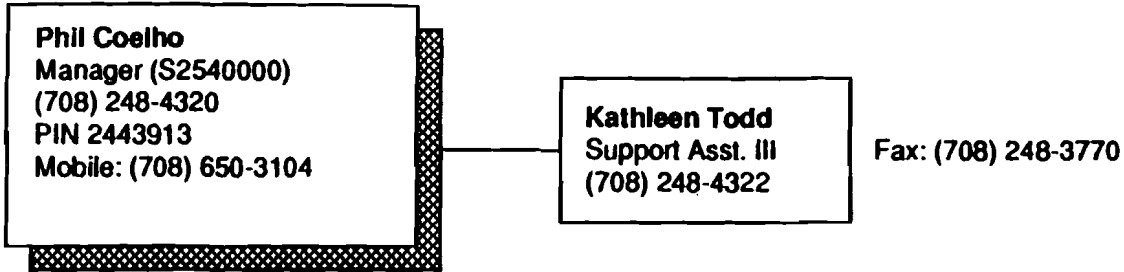
Tom Reed
Manager/OH (S2534000)
Switch Vendor Support (AT&T)
(216) 822-2792
Fax: (216) 822-7134
• Regional Stock Coordinator
• Equipment Engineering Issues
• Regional Coordinator -
Analog ESS

Gary Sanderson
(216) 822-8827/OH

Engineering Unit Support Construction Support



Engineering Unit Support Construction Support



Hank Hartman
Manager/IL (S2541000)
(708) 248-4529
Pin: 2776845
Fax: (708) 248-3770

- Fiber Placing/Splicing Support & M&P Development
- Video Interactive Service
- Fiber Test Set

Fred Kisiday
Manager/IL (S2542000)
(708) 248-3920
Pager: (708) 661-9927
Fax: (708) 248-3770

- Digital Loop Create Service Support

Vivian Gomez McKeon
Manager/IL (S2543000)
(708) 248-4640
Pager: (708) 817-0646
Fax: (708) 248-3770

- Construction Operations Support

Sue Reeves
Manager/IL (S2544000)
(708) 691-4131
Pin 2558858
Fax: (708) 620-0885

- Construction Management Centers
- Job Administration Systems Support

Chuck Simons
Manager/IL
(708) 248-4293

Bill Hettinger
Manager/IL
(708) 248-4516

Cy Daul
Manager/WI
(414) 433-4073

Luke Grabill
Manager/
(513) 296-3664

Patrick Jones
Manager/IN
(317) 265-8332

Ann Felstow
Manager/MI
(313) 496-8343

Dave Fonda
Manager/IL
(708) 248-4359

Bob Branickey
Manager/OH
(216) 822-8875

Judy Franck
Manager/IL
(708) 691-4114

Intesar Sesi
Clerical Support/NM
(313) 496-8346/MI

Doug Hangstrom
Manager/IL
(708) 248-4252

Dennis Byrne
Manager/MI
(313) 496-8237

Louie Rendek
Manager/OH
(216) 822-2203

Phyllis Coleman
Clerical Support/NM
(414) 678-4967/WI

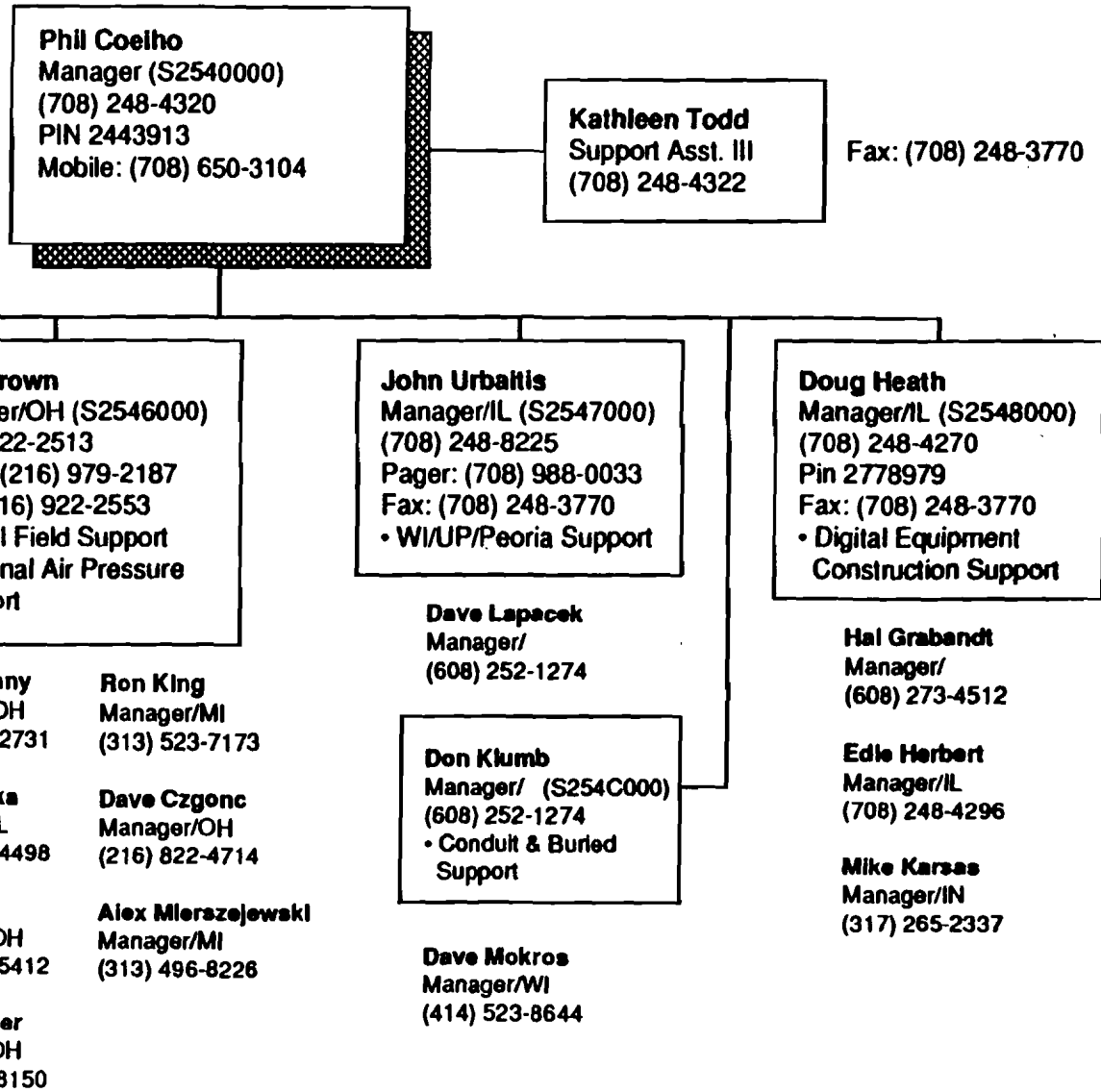
Beth Simmons
Manager/IL
(708) 691-4113

Dorothy Hirsch
Clerical Support/NM
(216) 822-5766/OH

Judi Kinner
Manager/
(219) 237-8339

Kathleen Todd
(on loan to Coelho)

Engineering Unit Support Construction Support



**Engineering Unit Support
Systems Support/Mechanization**

Lee Gordon
Manager (S2550000)
(708) 248-4370
PIN 2777935
Mobile: (708) 710-3705 or
(708) 533-4600

Sharon DeFoy
Secretary
(708) 248-4372

Fax: (708) 248-3775

Harry Ingle
Manager/IL (S2550000)
Technical Operations
Planning
(708) 248-4231
PIN 2558449
Fax: (708) 248-3775
• Bellcore Program
Management
• Universal Engineering
Workstation

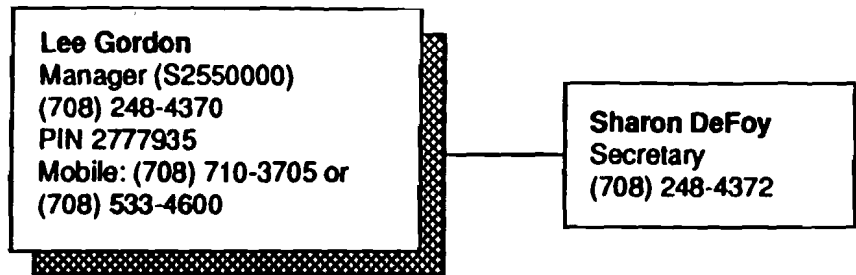
Bonnie Karberg
Manager/OH (S2550000)
Data Integration
(216) 838-6733
Pager: (216) 432-9498
Fax: (216) 838-6987

Ed Smith
Manager/OH (S2550000)
JMOS/MACS Systems
Support
(216) 838-6618
Pager: (216) 765-3934
Fax: (216) 838-3813

Margaret Smith
Manager/IL (S2550000)
Integrated Operations
Support
(708) 248-2570
Pager: (708) 988-2758
Fax: (708) 248-2028

Lori Whalen
Manager/IL (S2550000)
Systems Planning
(708) 248-4543
Pager: (312) 514-2398
Fax: (708) 248-3775

**Engineering Unit Support
Systems Support/Mechanization**



Fax: (708) 248-3775

Rick Mathes
Manager/IN(S2551000)
 Frontline Systems
 Integration Planning
 (317) 265-5445
 Pager: (317) 235-1666
 Fax: (317) 265-6620
 • Frontline
 • NPS
 • ITP
 • Data
 • PICS

John Gedig
Manager/IN (S2552000)
 ARES Systems Operations
 (317) 265-6577
 Pager: (317) 367-3837
 Fax: (317) 265-3304
 • ARES Support

Jan Makovsky
 Senior Analyst/WI
 (414) 227-6664

Sandra Hileman
 Analyst/OH
 (216) 838-6737

Karole Polasko
 Analyst/OH
 (216) 838-6623

Debbie Davis
 Analyst/OH
 (216) 838-6739

Alice Jackson
 Analyst/IL
 (312) 727-1331

Marle Stolpa
 Analyst/WI
 (414) 227-6734

Cynthia Hicks
 Analyst/WI
 (414) 227-6644

Curt McConville
 Analyst/WI
 (414) 227-6669

Sam Taylor
 Analyst/IN
 (317) 265 -7182

Tim Stireman
 Senior Analyst/IN
 (317) 265-5087

Angela Guthrie
 Analyst/IN
 (317) 265-1940

Mike Morrett
 Analyst/IN
 (317) 265-1870

Mary Jo Armstrong
 Analyst/WI
 (414) 896-7690

Gene Hegarty
 Contractor/IN
 (317) 265-6082

Karen Pruet
 Analyst/IN
 (317) 265-1872

Larry Barr
 Analyst/IN
 (317) 265-5487

Kat Lakey
 Analyst/IN
 (317) 265-2334

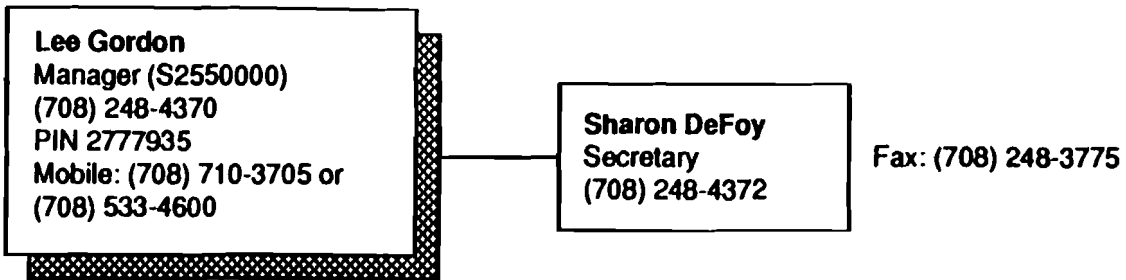
Lyle Simmons
 Analyst/IN
 (317) 265-4484

Jonathan DeBaun
 Contractor/IN
 (317) 265-3572

Randy Loeffler
 Analyst/IN
 (317) 265-1868

**ARES Contractor
 Vacant**

**Engineering Unit Support
Systems Support/Mechanization**



Jim Resler
Manager/MI (S2553000)
Local Systems/AOE
(313) 424-5202
Pager: (313) 601-3269
Fax: (313) 424-0825

Don Muehlbauer
Manager/WI (S2554000)
Frontline System
Engineering Design/OSP
(414) 523-7062
Pager: 414-558-9296
Fax: (414) 523-5010
• Frontline
• LEIS
• TMM Implementation

Dan Ortman
Manager/IL (S2555000)
Frontline Engineering
Design/COE &
Capital Management
(312) 220-2837
Pager: (312) 740-1332
Fax: (312) 669-2183

John Boghian
Senior Analyst/MI
(313) 424-4060

Laurie Compton
Analyst/IN
(317) 265-3102

Jim Kelly
Senior Analyst/MI

Harry Richards
Analyst/MI
(313) 424-4202

Marybeth McAuley
Senior Analyst/MI
(317) 265-7306

Carol Strange
Analyst/IN
(317) 265-3265

Barbara Birge
Analyst/IN
(317) 265-1884

Don Trionfi
Analyst/MI
(313) 424-0274

Laura Bushong
Analyst/IN
(317) 265-2711

Dale Armstrong
Contractor/MI
(614) 223-7509

Vince French
Senior Analyst/IN
(317) 265-7308

Janice Plesens
Analyst/IL
(312) 669-2304

Leonard Ferris
Analyst/IL
(312) 220-2836

Jerry Liston
Senior Analyst/IL
(312) 669-2181

Sharon Levels
Analyst/IL
(317) 265-5434

Bill Faulkner
Analyst/WI
(414) 523-8669

Randy Claver
Senior Analyst/IL
(312) 669-2625

Gary Czurylo
Analyst/IL
(312) 669-2334

Dolores Duggan
Senior Analyst/IL
(312) 669-2327

Suzanne Garcia
Analyst/IL
(312) 669-2628

David Samuels
Analyst/IL
(312) 669-2325

Engineering Unit Support Systems Support/Mechanization

Lee Gordon
 Manager (S2550000)
 (708) 248-4370
 PIN 2777935
 Mobile: (708) 710-3705 or
 (708) 533-4600

Sharon DeFoy
 Secretary
 (708) 248-4372

Fax: (708) 248-3775

Klaus Heise
 Manager/IN (S2556000)
 Integration Planning/
 Forecasting AOE
 (317) 265-2269
 Pager: (317) 928-4163
 Fax: (317) 265-4932

Vacant
 Manager (S2557000)
 Local Systems
 Operations

Marc Sullivan
 Manager/IL (S2558000)
 Systems Support Integration
 (708) 248-4232
 Pin: 8556864
 Fax: (708) 248-3941

Rick Callison
 Manager/OH (S2559000)
 Network/ESCOM
 (614) 223-4822
 Pager: (614) 241-9790
 Fax: (614) 223-8117
 • Minicomputer System
 Support
 • System Administration

Jim Harris
 Data Support Mgr/OH
 (614) 223-7794

Jan Schloesser
 Data Support Mgr/WI
 (414) 678-2075

David Harrison
 Senior Analyst/OH
 (216) 384-3936

Jim Irons
 Analyst/OH
 (312) 220-2083

Rob Lundgren
 Senior Analyst/IL
 (312) 669-2331

Bob King
 Analyst/IL
 (312) 220-2084

Dawn Braatz
 Analyst/IL
 (414) 678-6404

Ida Keating
 Data Support Mgr/IL
 (312) 220-2697

Debbie Crall
 Staff Assistant/IN
 (317) 265-2069

Mike Hollowell
 Analyst/OH
 (216) 838-6619

Dan Morris
 Analyst/OH
 (614) 223-3355

John Wilk
 Analyst/IL
 (312) 220-2085

Charlie McLemore
 Data Support Mgr/MI
 (313) 223-8386

Einora Rushing
 Clerical/NM/WI

Cindy Hulewat
 Analyst/OH
 (216) 838-6634

Mike Porter
 Data Support Mgr/OH
 (614) 223-5335

Tammy Volgt
 Clerical/NM/IL
 (312) 220-2423

Dave Dickson
 Senior Analyst/OH
 (614) 223-8134

Mike Place
 Analyst/OH
 (614) 223-4143

Ron Kummer
 Analyst/OH
 (614) 223-7604

Dale Wisard
 Analyst/OH
 (614) 223-7119

Dave MacNealy
 Analyst/OH
 (614) 223-7569

Kathie Hall
 Technical/NM/OH
 (614) 223-7298

Mike Petry
 Analyst/OH
 (614) 223-4059

Patricia Moreland
 Technical/NM/OH
 (216) 822-8186