

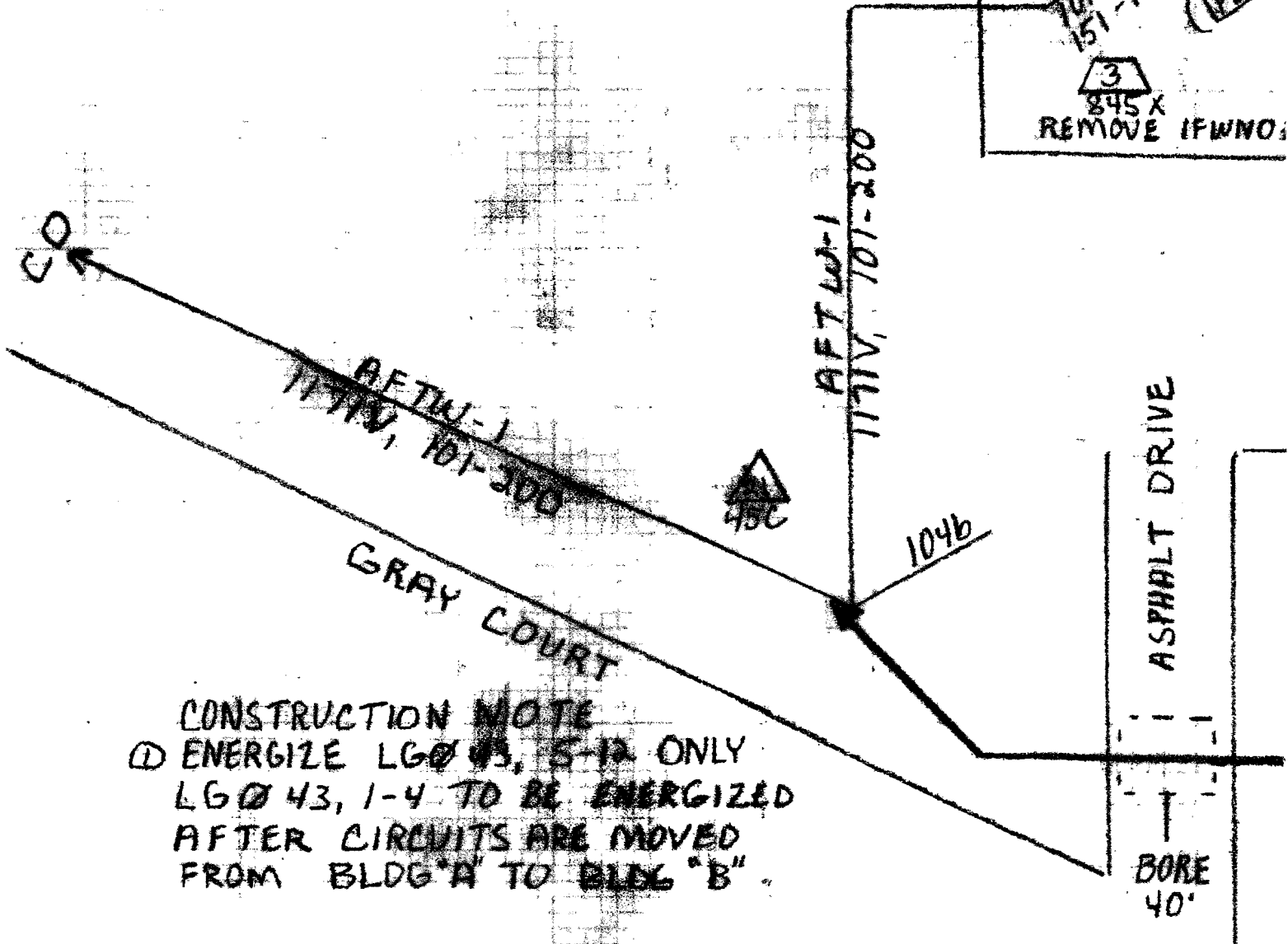
HICAP COPPER PAIRS

117IV, 104, 104, 108, 124, 125
151, 154, 158

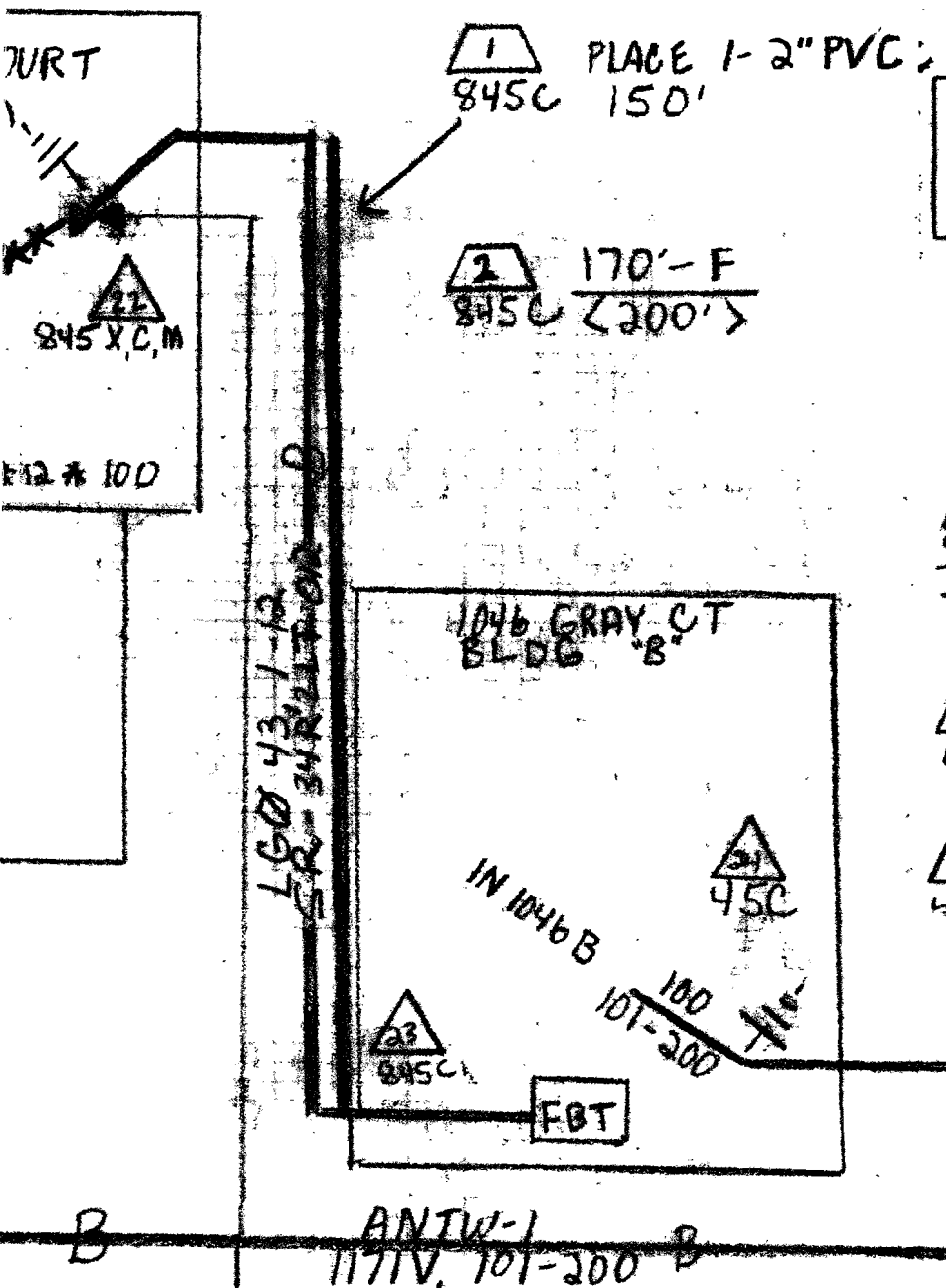
117IV, $\frac{56 \text{ KBS}}{124-125}$

1046 GRAY C
CELLCOM
BLDG "A"

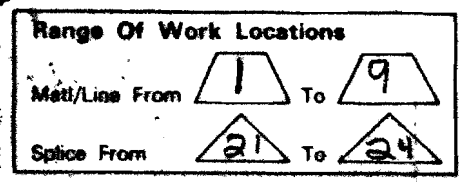
20
101-125
151-175 (VDT)
3
845 X
REMOVE IFWNO



CONSTRUCTION NOTE
① ENERGIZE LGØ 43, 5-12 ONLY
LGØ 43, 1-4 TO BE ENERGIZED
AFTER CIRCUITS ARE MOVED
FROM BLDG "A" TO BLDG "B"



M-4794
(9-84)



BOND & GROUND
845C

MOUNT FBT-1231-30-51
845C IN RELAY RACK
PROVIDED BY DTE

INWPN *100
45C

BOND & GROUND
45C

250' F
45C (<275'>)

Estimate Caption Stamp

Est. # AK-25922

Dist. or GB RIDGE

TL Name _____

Line or _____

Route No. _____

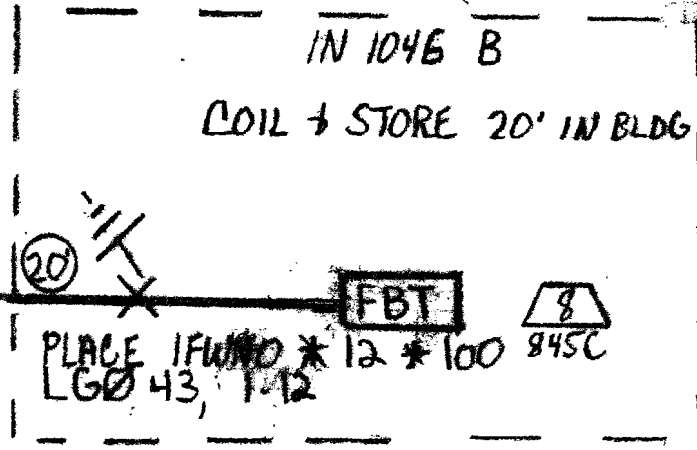
O.P.M. Reference _____ Date _____

GRID 60

Resistance Zone _____

Eng. By: J. SYLVESTRE

Part No. _____



SR-34SR-2LT-12
LG0 43, 1-12
CO

Wisconsin Bell

M-6353
(1-84)