

DALLAS
SEMICONDUCTOR

DS2422/DS2423 1K/4K-Bit 1-Wire™ RAM with Counters

FEATURES

- 4096 bits of SRAM (DS2423), 1024 bits with the DS2422
- Four 32-bit read-only counters (DS2423), three counters with the DS2422
- Active-low external trigger inputs for two of the counters with on-chip debouncing compatible with reed and Wiegand switches
- Unique, factory-lasered and tested 64-bit registration number (8-bit family code + 48-bit serial number + 8-bit CRC tester) assures absolute traceability because no two parts are alike
- Memory partitioned into 16 256-bit pages in DS2423, (4 pages in DS2422), for packetizing data
- 256-bit scratchpad with strict read/write protocols ensures integrity of data transfer
- On-chip 16-bit CRC generator for safeguarding data transfers
- Built-in multidrop controller ensures compatibility with other MicroLAN™ products
- Directly connects to a single port pin of a microprocessor and communicates at up to 16.3k bits per second
- Overdrive mode boosts communication speed to 142k bits per second
- 8-bit family code specifies device communication requirements to reader
- Presence detector acknowledges when reader first applies voltage
- Compact, low cost 6-pin TSOC surface mount package
- Reads, writes and counts over a wide voltage range of 2.8V to 5.5V from -40°C to +85°C

PIN ASSIGNMENT

TSOC PACKAGE



TOP VIEW

3.7 X 4.0 X 1.5 mm



SIDE VIEW

PIN DESCRIPTION

| | |
|-------|-----------------|
| Pin 1 | Ground |
| Pin 2 | Data |
| Pin 3 | Vbat |
| Pin 4 | NC |
| Pin 5 | Input channel B |
| Pin 6 | Input channel A |

ORDERING INFORMATION

contact factory

DESCRIPTION

The DS2422/DS2423 1-Wire™ RAM With Counters (hereafter referred to as DS242X) is a fully static, read/write memory for battery operation in a low cost 6-lead TSOC surface mount package. The memory is organized as sixteen pages (DS2423) or four pages (DS2422) of 256 bits each. In addition, the device has four (DS2423) or three (DS2422) counters, two of them with external trigger inputs called A and B. Each of the counters is associated with a memory page. A counter without external trigger input increments each time data is written to the page it is associated with (Write Cycle Counter). The counters triggered by inputs A and B, respectively, increment with every low-going pulse on their input. All counters are read-only. They are automatically cleared to zero when the battery is connected.

The battery-backed memory offers a simple solution to storing and retrieving information pertaining to the equipment where the DS242X is installed and its frequency of use. The scratchpad is an additional page that acts as a buffer when writing to memory. Data is first written to the scratchpad where it may be read back for verification. A copy scratchpad command will then transfer the data to memory. This process insures data integrity when modifying the memory. A 64-bit registration number is factory lasered into each DS242X to provide a guaranteed unique identity which allows for absolute traceability and acts as node address if multiple DS242X are connected in parallel to form a local network. Data is transferred serially via the 1-Wire protocol which requires only a single data lead and a ground return.

The DS242X 1-Wire RAM With Counters can store encrypted data. The unique registration number and the page write cycle counter(s) prevent unauthorized manipulation of data stored in a page with a write cycle counter associated.

OVERVIEW

The block diagram in Figure 1 shows the relationships between the major control and memory sections of the DS242X. The DS242X has four main data components: 1) 64-bit lasered ROM, 2) 256-bit scratchpad, 3) 1024-bit (DS2422) or 4096-bit (DS2423) SRAM, and 4) three (DS2422) or four (DS2423) 32-bit read-only counters. The hierarchical structure of the 1-Wire protocol is shown in Figure 2. Each of these counters is associated with one of the 256-bit memory pages. The three counters of the DS2422 are associated with pages 1 to 3; the four counters of the DS2423 are associated with pages 12 to 15. The contents of the counter is read together with the memory data using a special command. The bus master must first provide one of the six ROM Function Commands, 1) Read ROM, 2) Match ROM, 3) Search ROM, 4) Skip ROM, 5) Overdrive-Skip ROM or 6) Overdrive-Match ROM. Upon completion of an overdrive ROM command byte executed at standard

speed, the device will enter Overdrive mode where all subsequent communication occurs at a higher speed. The protocol required for these ROM function commands is described in Figure 9. After a ROM function command is successfully executed, the memory functions become accessible and the master may provide any one of the five memory function commands. The protocol for these memory function commands is described in Figure 7. All data is read and written least significant bit first.

PARASITE POWER

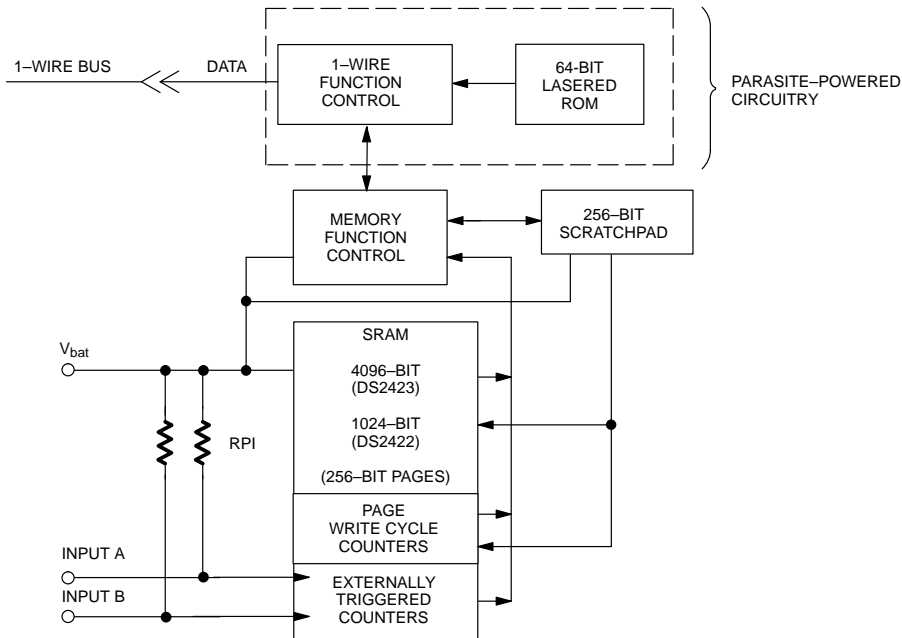
The block diagram (Figure 1) shows the parasite-powered circuitry. This circuitry "steals" power whenever the I/O input is high. I/O will provide sufficient power as long as the specified timing and voltage requirements are met. The advantages of parasite power are two-fold: 1) by parasiting off this input, lithium is conserved and 2) if the battery is exhausted for any reason, the ROM may still be read normally.

64-BIT LASERED ROM

Each DS242X contains a unique ROM code that is 64 bits long. The first eight bits are a 1-Wire family code. The next 48 bits are a unique serial number. The last eight bits are a CRC of the first 56 bits (See Figure 3). The 1-Wire CRC is generated using a polynomial generator consisting of a shift register and XOR gates as shown in Figure 4. The polynomial is $X^8 + X^5 + X^4 + 1$. Additional information about the Dallas 1-Wire Cyclic Redundancy Check is available in the Book of DS19xx iButton™ Standards.

The shift register bits are initialized to zero. Then starting with the least significant bit of the family code, one bit at a time is shifted in. After the 8th bit of the family code has been entered, then the serial number is entered. After the 48th bit of the serial number has been entered, the shift register contains the CRC value. Shifting in the eight bits of CRC should return the shift register to all zeros.

DS242X BLOCK DIAGRAM Figure 1



MEMORY

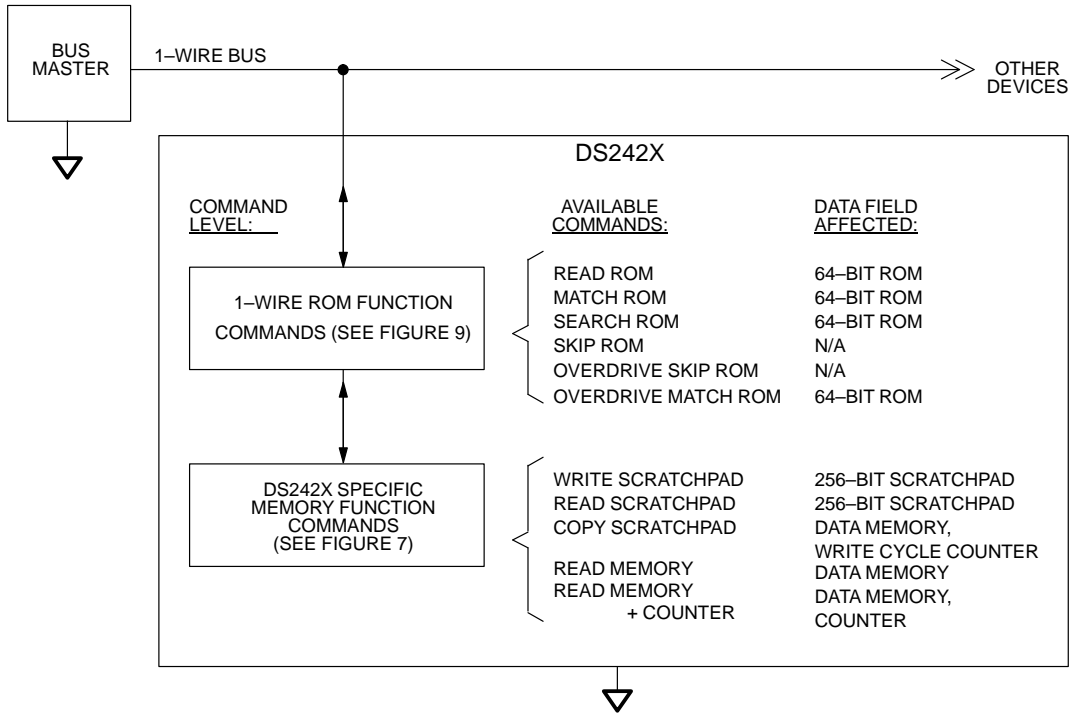
The memory map in Figure 5 shows a 32-byte page called the scratchpad and additional 32-byte pages called memory. The DS2422 contains pages 0 through 3 which make up the 1024-bit SRAM. The DS2423 contains pages 0 through 15 which make up the 4096-bit SRAM. The scratchpad is an additional page that acts as a buffer when writing to memory.

ADDRESS REGISTERS AND TRANSFER STATUS

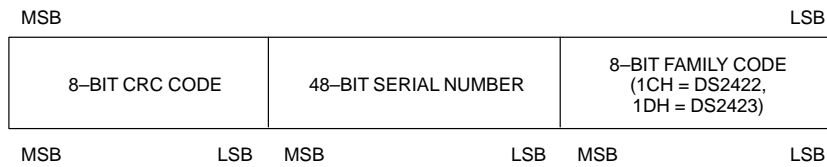
Because of the serial data transfer, the DS242X employs three address registers, called TA1, TA2 and E/S (Figure 6). Registers TA1 and TA2 must be loaded with the target address to which the data will be written or from which data will be sent to the master upon a Read command. Register E/S acts like a byte counter and Transfer Status register. It is used to verify data integrity with write commands. Therefore, the master only has read access to this register. The lower five bits of the E/S register indicate the address of the last byte that has been written to the scratchpad. This address is called Ending Offset. Bit 5 of the E/S register, called PF

or "partial byte flag," is set if the number of data bits sent by the master is not an integer multiple of 8. Bit 6 has no function; it always reads 0. Note that the lowest five bits of the target address also determine the address within the scratchpad, where intermediate storage of data will begin. This address is called byte offset. If the target address (TA1) for a Write command is 03CH for example, then the scratchpad will store incoming data beginning at the byte offset 1CH and will be full after only four bytes. The corresponding ending offset in this example is 1FH. For best economy of speed and efficiency, the target address for writing should point to the beginning of a new page, i.e., the byte offset will be 0. Thus the full 32-byte capacity of the scratchpad is available, resulting also in the ending offset of 1FH. However, it is possible to write one or several contiguous bytes somewhere within a page. The ending offset together with the Partial Flag support the master checking the data integrity after a Write command. The highest valued bit of the E/S register, called AA or Authorization Accepted, acts as a flag to indicate that the data stored in the scratchpad has already been copied to the target memory address. Writing data to the scratchpad clears this flag.

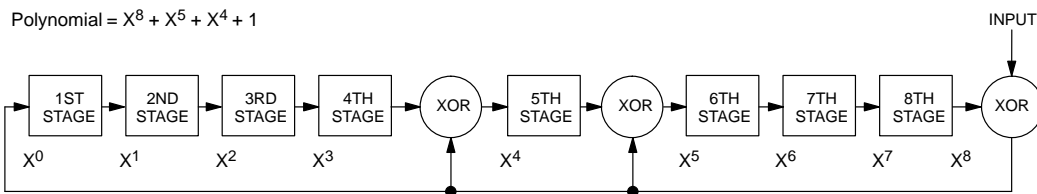
HIERARCHICAL STRUCTURE FOR 1-WIRE PROTOCOL Figure 2



64-BIT LASERED ROM Figure 3



1-WIRE CRC GENERATOR Figure 4



WRITING WITH VERIFICATION

To write data to the DS242X, the scratchpad has to be used as intermediate storage. First the master issues the Write Scratchpad command to specify the desired target address, followed by the data to be written to the scratchpad. Under certain conditions (see Write Scratchpad command) the master will receive an inverted CRC16 of the command, address and data at the end of the write scratchpad command sequence. Knowing this CRC value, the master can compare it to the value it has calculated itself to decide if the communication was successful and proceed to the Copy Scratchpad command. If the master could not receive the CRC16, it has to send the Read Scratchpad command to read back the scratchpad to verify data integrity. As preamble to the scratchpad data, the DS242X repeats the target address TA1 and TA2 and sends the contents of the E/S register. If the PF flag is set, data did not arrive correctly in the scratchpad. The master does not need to continue reading; it can start a new trial to write data to the scratchpad. Similarly, a set AA flag indicates that the Write command was not recognized by the device. If everything went correctly, both flags are cleared and the ending offset indicates the address of the last byte written to the scratchpad. Now the master can continue reading and verifying every data byte. After the master has verified the data, it has to send the Copy Scratchpad command. This command must be followed exactly by the data of the three address registers TA1, TA2 and E/S. The master may obtain the contents of these registers by reading the scratchpad or derive it from the target address and the amount of data to be written. As soon as the DS242X has received these bytes correctly, it will copy the data to the requested location beginning at the target address.

MEMORY FUNCTION COMMANDS

The “Memory Function Flow Chart” (Figure 7) describes the protocols necessary for accessing the memory. An example follows the flowchart. The communication between master and DS242X takes place either at regular speed (default, OD = 0) or at Overdrive Speed (OD = 1). If not explicitly set into the Overdrive Mode the DS242X assumes regular speed.

Write Scratchpad Command [0FH]

After issuing the write scratchpad command, the master must first provide the 2-byte target address, followed by the data to be written to the scratchpad. The data will be written to the scratchpad starting at the byte offset (T4:T0). The ending offset (E4:E0) will be the byte off-

set at which the master stops writing data. Only full data bytes are accepted. If the last data byte is incomplete its content will be ignored and the partial byte flag PF will be set.

When executing the Write Scratchpad command the CRC generator inside the DS242X (see Figure 12) calculates a CRC over the entire data stream, starting at the command code and ending at the last data byte sent by the master. This CRC is generated using the CRC16 polynomial by first clearing the CRC generator and then shifting in the command code (0FH) of the Write Scratchpad command, the Target Addresses TA1 and TA2 as supplied by the master and all the data bytes. The master may end the Write Scratchpad command at any time. However, if the ending offset is 1111b, the master may send 16 read time slots and will receive the CRC generated by the DS242X.

The memory address range of the DS2422 is 0000H to 007FH and 0000H to 01FFH for the DS2423, respectively. If the bus master sends a target address higher than this, the internal circuitry of the chip will set the nine (DS2422) or seven (DS2423) most significant address bits to zero as they are shifted into the internal address register. The Read Scratchpad command will reveal the target address as it will be used by the DS242X. The master will identify such address modifications by comparing the target address read back to the target address transmitted. If the master does not read the scratchpad, a subsequent copy scratchpad command will not work since the most significant bits of the target address the master sends will not match the value the DS242X expects.

Read Scratchpad Command [AAH]

This command is used to verify scratchpad data and target address. After issuing the read scratchpad command, the master begins reading. The first two bytes will be the target address. The next byte will be the ending offset/data status byte (E/S) followed by the scratchpad data beginning at the byte offset (T4:T0). The master may read data until the end of the scratchpad after which the data read will be all logic 1s.

Copy Scratchpad [5AH]

This command is used to copy data from the scratchpad to memory. After issuing the copy scratchpad command, the master must provide a 3-byte authorization pattern which can be obtained by reading the scratchpad for verification. This pattern must exactly match the

data contained in the three address registers (TA1, TA2, E/S, in that order). If the pattern matches, the AA (Authorization Accepted) flag will be set and the copy will begin. A pattern of alternating 1s and 0s will be transmitted after the data has been copied until a reset pulse is issued by the master. Any attempt to reset the part will be ignored while the copy is in progress. Copy

typically takes 30 μ s. The data to be copied is determined by the three address registers. The scratchpad data from the beginning offset through the ending offset, will be copied to memory, starting at the target address. Anywhere from 1 to 32 bytes may be copied to memory with this command. The AA flag will be cleared only by executing a write scratchpad command.

DS242X MEMORY MAP Figure 5

| | | |
|---|--|----------------------|
| 32-BYTE INTERMEDIATE STORAGE SCRATCHPAD | | |
| ADDRESS | | |
| 0000H TO 001FH | 32-BYTE FINAL STORAGE NV RAM | page 0 |
| 0020H TO 003FH | 32-BYTE FINAL STORAGE NV RAM | page 1 |
| 0040H TO 005FH | 32-BYTE FINAL STORAGE NV RAM | page 2 |
| 0060H TO 007FH | 32-BYTE FINAL STORAGE NV RAM | page 3 |
| 0080H TO 017FH | FINAL STORAGE NV RAM (DS2423 ONLY) | page 4 to page 11 |
| 0180H TO 019FH | 32-BYTE FINAL STORAGE NV RAM (DS2423 ONLY) | page 12 |
| 01A0H TO 01BFH | 32-BYTE FINAL STORAGE NV RAM (DS2423 ONLY) | page 13 |
| 01C0H TO 01DFH | 32-BYTE FINAL STORAGE NV RAM (DS2423 ONLY) | page 14 |
| 01E0H TO 01FFH | 32-BYTE FINAL STORAGE NV RAM (DS2423 ONLY) | page 15 |

| | | DS2422 | DS2423 |
|--|-----------|---------------------|----------------------|
| NON-MEMORY MAPPED PAGE ASSOCIATED COUNTERS (ACCESSIBLE THROUGH A SPECIAL READ COMMAND) | COUNTER 1 | WRITE CYCLES PAGE 1 | WRITE CYCLES PAGE 12 |
| | COUNTER 2 | INPUT A (PAGE 2) | WRITE CYCLES PAGE 13 |
| | COUNTER 3 | INPUT B (PAGE 3) | INPUT A (PAGE 14) |
| | COUNTER 4 | (N/A) | INPUT B (PAGE 15) |

ADDRESS REGISTERS Figure 6

| | | | | | | | | |
|---|-----|-----|-----|-----|-----|-----|----|----|
| TARGET ADDRESS (TA1) | T7 | T6 | T5 | T4 | T3 | T2 | T1 | T0 |
| TARGET ADDRESS (TA2) | T15 | T14 | T13 | T12 | T11 | T10 | T9 | T8 |
| ENDING ADDRESS WITH DATA STATUS (E/S) (READ ONLY) | AA | 1) | PF | E4 | E3 | E2 | E1 | E0 |

1) THIS BIT WILL ALWAYS BE 0.

Read Memory [F0H]

The read memory command may be used to read the entire memory. After issuing the command, the master must provide the 2-byte target address. After the two bytes, the master reads data beginning from the target address and may continue until the end of memory, at which point logic 1s will be read. It is important to realize that the target address registers will contain the address provided. The ending offset/data status byte is unaffected.

The hardware of the DS242X provides a means to accomplish error-free writing to the memory section. To safeguard reading data in the 1-Wire environment and to simultaneously speed up data transfers, it is recommended to packetize data into data packets of the size of one memory page each. Such a packet would typically store a 16-bit CRC with each page of data to insure rapid, error-free data transfers that eliminate having to read a page multiple times to determine if the received data is correct or not. (See the Book of DS19xx iButton Standards, Chapter 7 for the recommended file structure).

Read Memory + Counter [A5H]

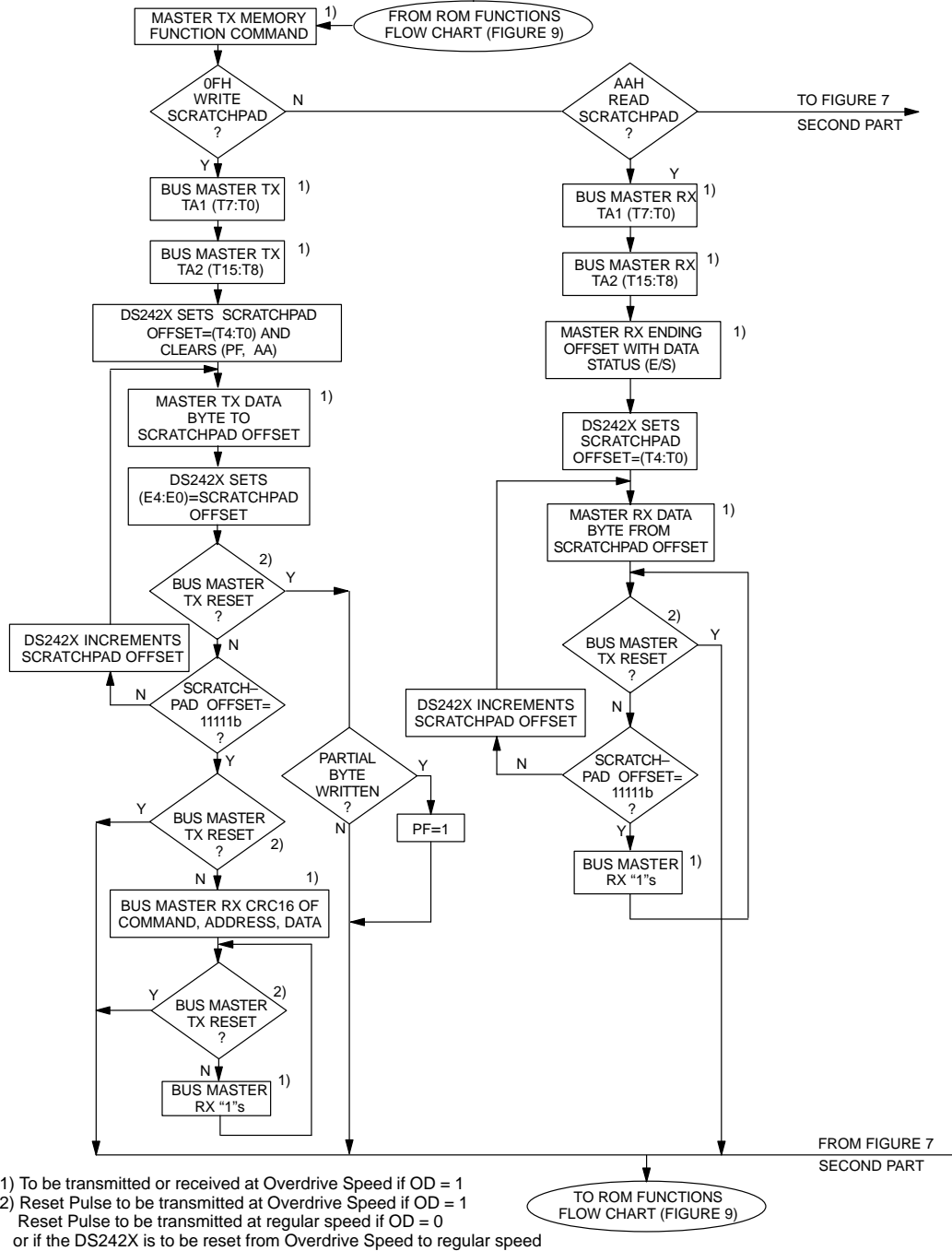
The Read Memory + Counter command is used to read memory data together with the write cycle counter or externally triggered counter associated with the addressed page of data memory. The additional information is transmitted by the DS242X as the end of a memory page is encountered. Following the current value of the counter the DS242X transmits 32 zero bits and a 16-bit CRC generated by the DS242X.

After having sent the command code of the Read Memory + Counter command, the bus master sends a

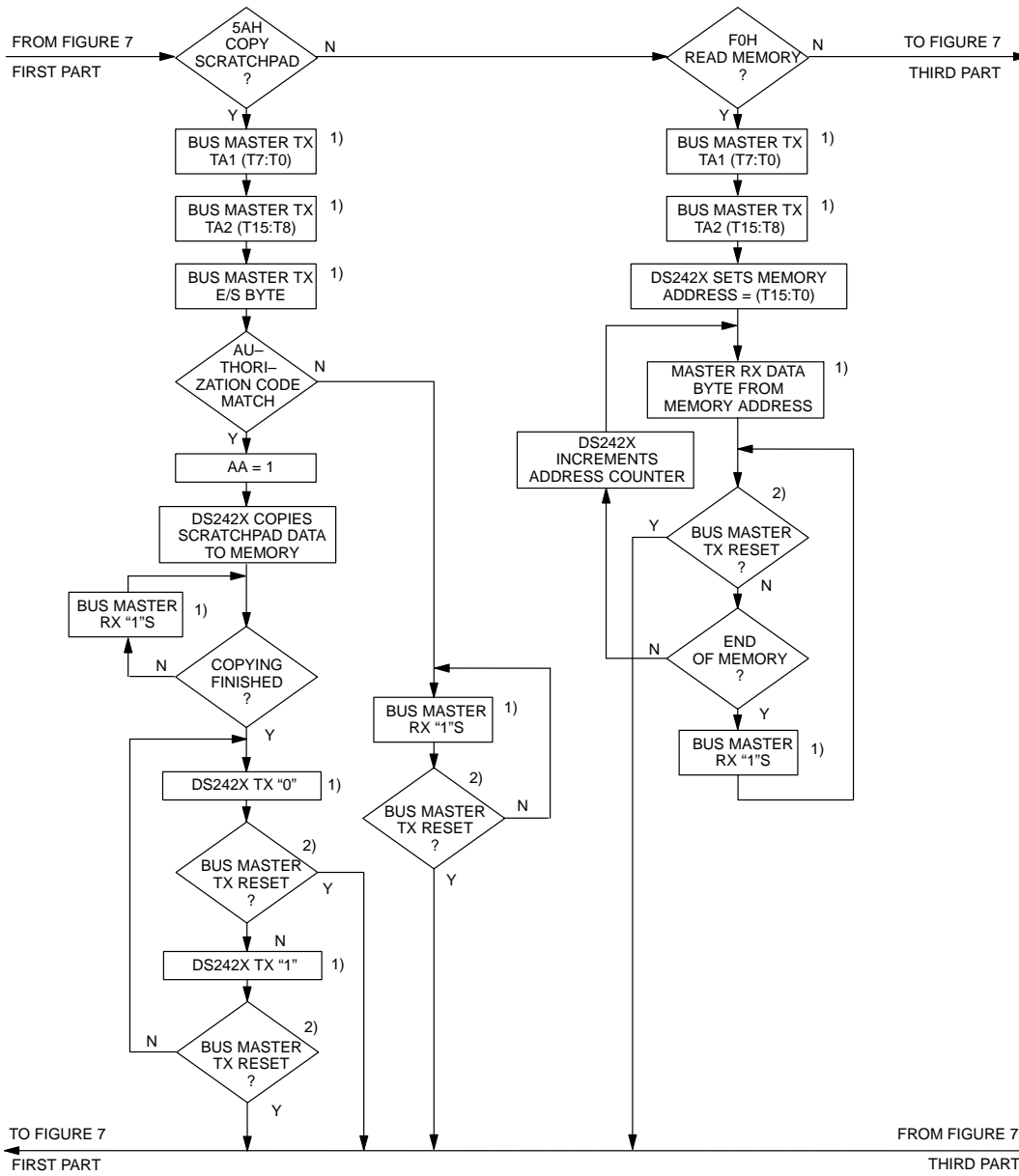
two-byte address (TA1=(T7:T0), TA2=(T15:T8)) that indicates a starting byte location within the data field. With the subsequent read data time slots the master receives data from the DS242X starting at the initial address and continuing until the end of a 32-byte page is reached. At that point the bus master will send 80 additional read data time slots and receive the contents of the 32-bit counter associated with the addressed page, 32 zero bits and a 16-bit CRC. With subsequent read data time slots the master will receive data starting at the beginning of the next page followed by the contents of the counter associated with the page, zero bits and CRC for that page. This sequence will continue until the final page and its accompanying data is read by the bus master. When applying the Read Memory + Counter command to a page that does not have a counter associated, the master will read FFFFFFFFH instead of a valid count.

With the initial pass through the Read Memory + Counter flow chart the 16-bit CRC value is the result of shifting the command byte into the cleared CRC generator, followed by the two address bytes, the contents of the data memory, the counter and the zero bits. Subsequent passes through the Read Memory + Counter flow chart will generate a 16-bit CRC that is the result of clearing the CRC generator and then shifting in the contents of the data memory page, its associated counter and zero bits. After the 16-bit CRC of the last page is read, the bus master will receive logical 1s from the DS242X until a Reset Pulse is issued. The Read Memory + Counter command sequence can be ended at any point by issuing a Reset Pulse.

MEMORY FUNCTION FLOW CHART Figure 7

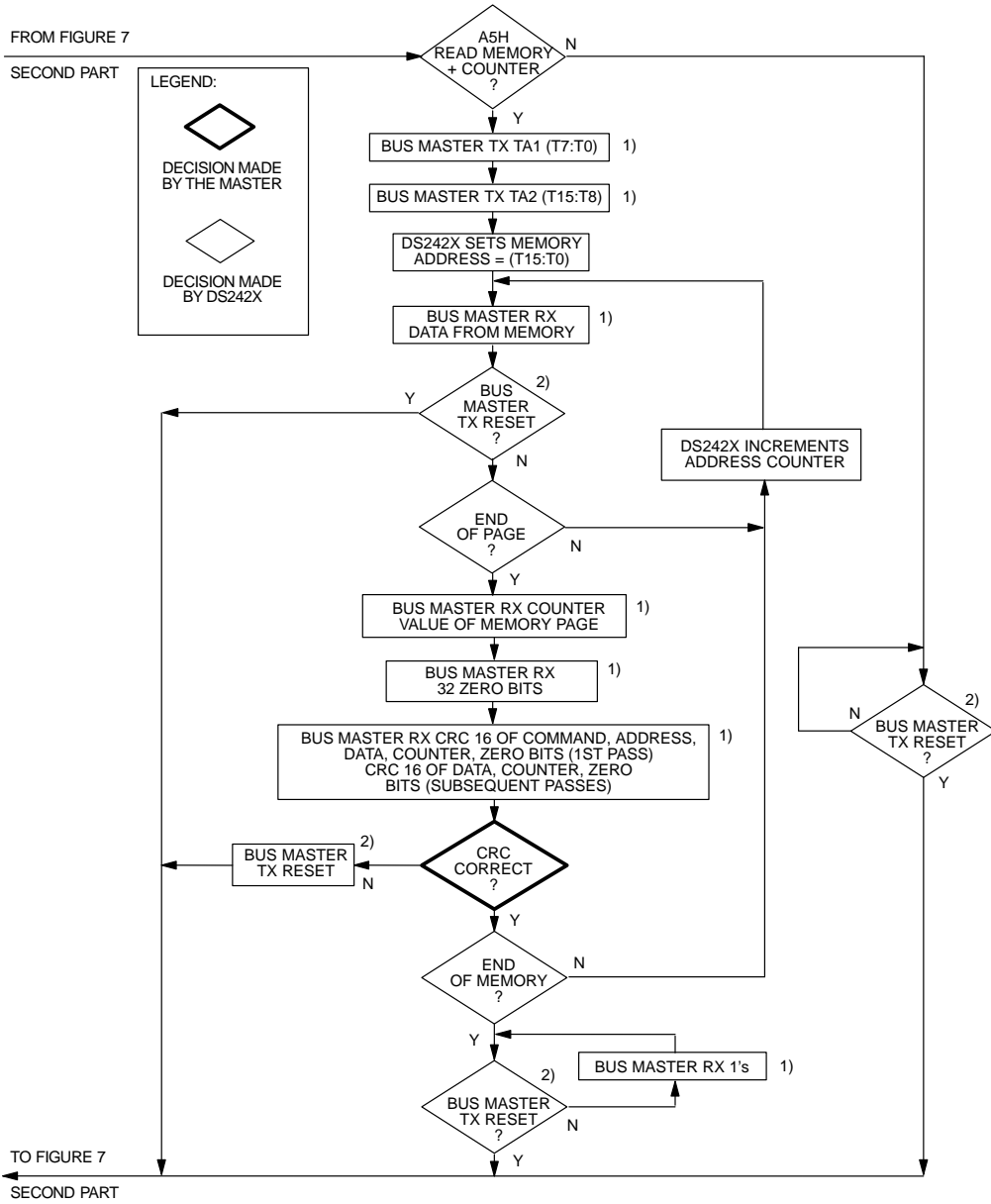


MEMORY FUNCTION FLOW CHART Figure 7 cont'd



- 1) To be transmitted or received at Overdrive Speed if OD = 1
- 2) Reset Pulse to be transmitted at Overdrive Speed if OD = 1
Reset Pulse to be transmitted at regular speed if OD = 0
or if the DS242X is to be reset from Overdrive Speed to regular speed

MEMORY FUNCTION FLOW CHART Figure 7 cont'd



MEMORY FUNCTION EXAMPLE (DS2423)

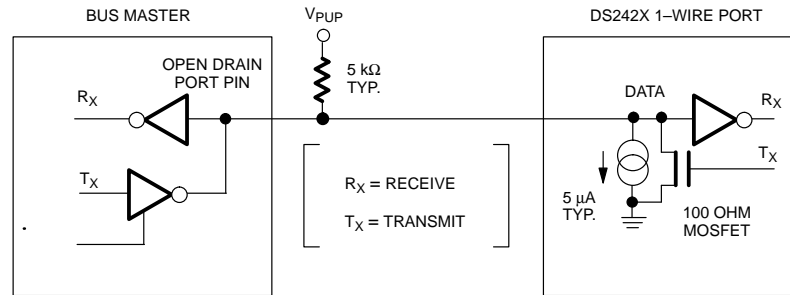
Example: Write two data bytes to memory location 0026 and 0027. Read entire memory.

| MASTER MODE | DATA (LSB FIRST) | COMMENTS |
|-------------|------------------|--------------------------------------|
| TX | Reset | Reset pulse (480–960 μ s) |
| RX | Presence | Presence pulse |
| TX | CCh | Issue “skip ROM” command |
| TX | 0Fh | Issue “write scratchpad” command |
| TX | 26h | TA1, beginning offset=26h |
| TX | 00h | TA2, address=0026h |
| TX | <2 data bytes> | Write 2 bytes of data to scratchpad |
| TX | Reset | Reset pulse |
| RX | Presence | Presence pulse |
| TX | CCh | Issue “skip ROM” command |
| TX | AAh | Issue “read scratchpad” command |
| RX | 26h | Read TA1, beginning offset=26h |
| RX | 00h | Read TA2, address=0026h |
| RX | 07h | Read E/S, ending offset=7h, flags=0h |
| RX | <2 data bytes> | Read scratchpad data and verify |
| TX | Reset | Reset pulse |
| RX | Presence | Presence pulse |
| TX | CCh | Issue “skip ROM” command |
| TX | 5Ah | Issue “copy scratchpad” command |
| TX | 26h | TA1 |
| TX | 00h | TA2 |
| TX | 07h | E/S |
| | | } AUTHORIZATION CODE |
| TX | Reset | Reset pulse |
| RX | Presence | Presence pulse |
| TX | CCh | Issue “skip ROM” command |
| TX | F0h | Issue “read memory” command |
| TX | 00h | TA1, beginning offset=0 |
| TX | 00h | TA2, address=0000h |
| RX | <512 bytes> | Read entire memory |
| TX | Reset | Reset pulse |
| RX | Presence | Presence pulse, done |

MEMORY FUNCTION EXAMPLE (DS2423)

Read page 14 and counts of Input A. Rewrite page 14 with 32 bytes. Read Memory + Counter, Write Scratchpad, Copy Scratchpad.

| MASTER MODE | DATA (LSB FIRST) | COMMENTS |
|-------------|------------------|---------------------------------------|
| TX | Reset | Reset pulse (480–960 μ s) |
| RX | Presence | Presence pulse |
| TX | CCh | Issue “skip ROM” command |
| TX | A5h | Issue “read memory + counter” command |
| TX | C0h | TA1, beginning offset=C0h |
| TX | 01h | TA2, address=01C0h |
| RX | <32 data bytes> | Read 32 bytes of data |
| RX | <4 data bytes> | Read Counts of Input A |
| RX | <4 data bytes> | Read 32 Zero Bits |
| RX | <2 data bytes> | Read (inverted) CRC16 |
| TX | Reset | Reset pulse |
| RX | Presence | Presence pulse |
| TX | CCh | Issue “skip ROM” command |
| TX | 0Fh | Issue “write scratchpad” command |
| TX | C0h | TA1, beginning offset=C0h |
| TX | 01h | TA2, address=01C0h |
| TX | <32 data bytes> | Write 32 bytes of data to scratchpad |
| RX | <2 data bytes> | Read (inverted) CRC16 |
| TX | Reset | Reset pulse |
| RX | Presence | Presence pulse |
| TX | CCh | Issue “skip ROM” command |
| TX | 5Ah | Issue “copy scratchpad” command |
| TX | C0h | } AUTHORIZATION CODE |
| TX | 01h | |
| TX | 1Fh | |
| RX | <1 data byte> | Read Copy Scratchpad response |
| TX | Reset | Reset pulse |
| RX | Presence | Presence pulse, done |

HARDWARE CONFIGURATION Figure 8**1-WIRE BUS SYSTEM**

The 1-Wire bus is a system which has a single bus master and one or more slaves. In all instances the DS242X is a slave device. The bus master is typically a microcontroller. The discussion of this bus system is broken down into three topics: hardware configuration, transaction sequence, and 1-Wire signaling (signal types and timing). A 1-Wire protocol defines bus transactions in terms of the bus state during specific time slots that are initiated on the falling edge of sync pulses from the bus master. For a more detailed protocol description, refer to Chapter 4 of the Book of DS19xx iButton Standards.

HARDWARE CONFIGURATION

The 1-Wire bus has only a single line by definition; it is important that each device on the bus be able to drive it at the appropriate time. To facilitate this, each device attached to the 1-Wire bus must have open drain or 3-state outputs. The 1-Wire port of the DS242X is open drain with an internal circuit equivalent to that shown in Figure 8. A multidrop bus consists of a 1-Wire bus with multiple slaves attached. At regular speed the 1-Wire bus has a maximum data rate of 16.3k bits per second. The speed can be boosted to 142k bits per second by activating the Overdrive Mode. The 1-Wire bus requires a pull-up resistor of approximately 5 kΩ.

The idle state for the 1-Wire bus is high. If for any reason a transaction needs to be suspended, the bus **MUST** be left in the idle state if the transaction is to resume. If this does not occur and the bus is left low for more than 16 μs (Overdrive Speed) or more than 120 μs (regular speed), one or more devices on the bus may be reset.

TRANSACTION SEQUENCE

The protocol for accessing the DS242X via the 1-Wire port is as follows:

- Initialization
- ROM Function Command
- Memory Function Command
- Transaction/Data

INITIALIZATION

All transactions on the 1-Wire bus begin with an initialization sequence. The initialization sequence consists of a reset pulse transmitted by the bus master followed by presence pulse(s) transmitted by the slave(s).

The presence pulse lets the bus master know that the DS242X is on the bus and is ready to operate. For more details, see the "1-Wire Signaling" section.

ROM FUNCTION COMMANDS

Once the bus master has detected a presence, it can issue one of the six ROM function commands. All ROM function commands are eight bits long. A list of these commands follows (refer to flowchart in Figure 9):

Read ROM [33H]

This command allows the bus master to read the DS242X's 8-bit family code, unique 48-bit serial number, and 8-bit CRC. This command can only be used if there is a single DS242X on the bus. If more than one slave is present on the bus, a data collision will occur when all slaves try to transmit at the same time (open drain will produce a wired-AND result). The resultant family code and 48-bit serial number will result in a mismatch of the CRC.

Match ROM [55H]

The match ROM command, followed by a 64-bit ROM sequence, allows the bus master to address a specific DS242X on a multidrop bus. Only the DS242X that exactly matches the 64-bit ROM sequence will respond to the following memory function command. All slaves that do not match the 64-bit ROM sequence will wait for a reset pulse. This command can be used with a single or multiple devices on the bus.

Skip ROM [CCH]

This command can save time in a single drop bus system by allowing the bus master to access the memory functions without providing the 64-bit ROM code. If more than one slave is present on the bus and a read command is issued following the Skip ROM command, data collision will occur on the bus as multiple slaves transmit simultaneously (open drain pull-downs will produce a wired-AND result).

Search ROM [F0H]

When a system is initially brought up, the bus master might not know the number of devices on the 1-Wire bus or their 64-bit ROM codes. The search ROM command allows the bus master to use a process of elimination to identify the 64-bit ROM codes of all slave devices on the bus. The search ROM process is the repetition of a simple 3-step routine: read a bit, read the complement of the bit, then write the desired value of that bit. The bus master performs this simple, 3-step routine on each bit of the ROM. After one complete pass, the bus master knows the contents of the ROM in one device. The remaining number of devices and their ROM codes may be identified by additional passes. See Chapter 5 of the Book of DS19xx|Button Standards for a comprehensive discussion of a search ROM, including an actual example.

Overdrive Skip ROM [3CH]

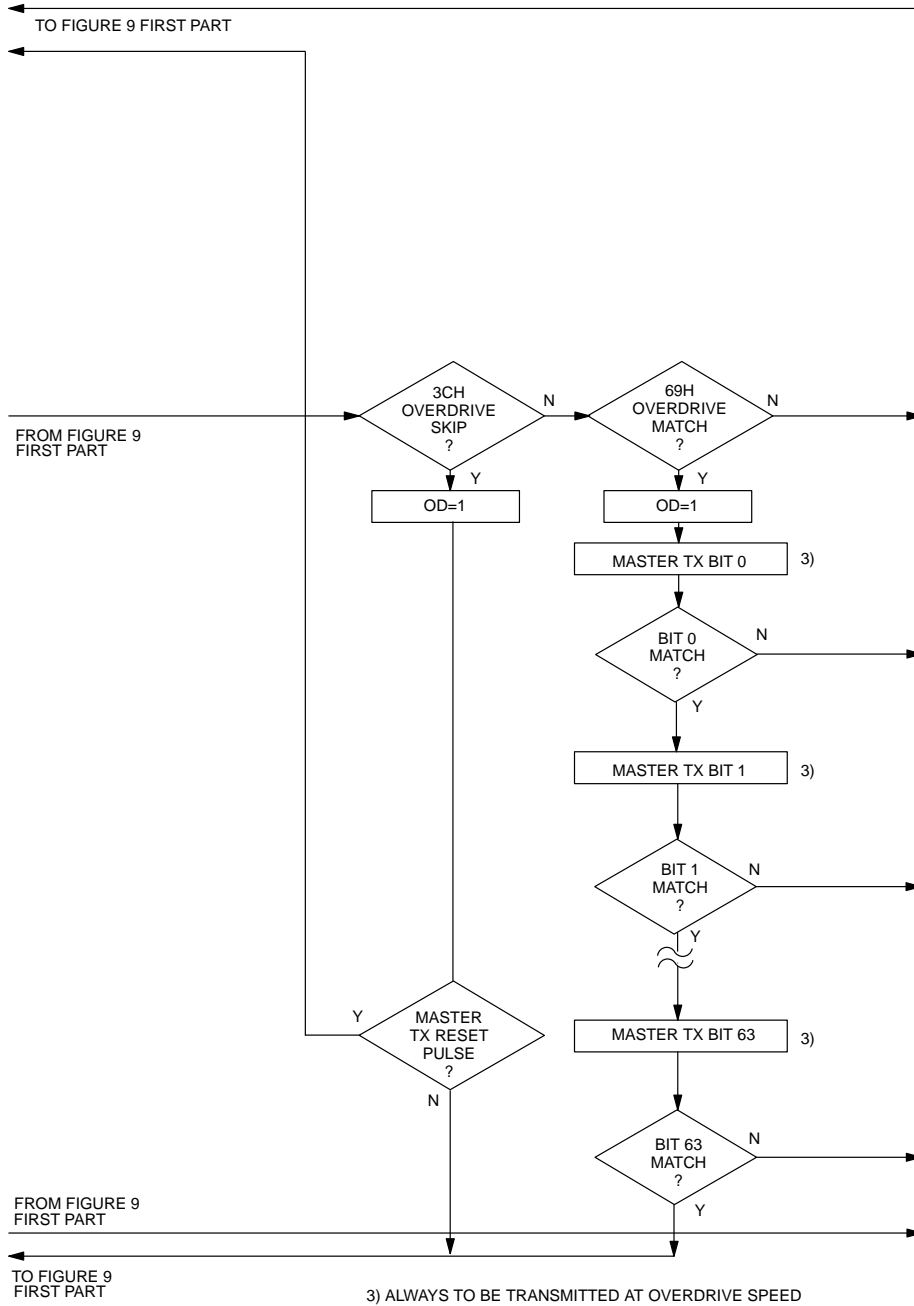
On a single-drop bus this command can save time by allowing the bus master to access the memory functions without providing the 64-bit ROM code. Unlike the normal Skip ROM command the Overdrive Skip ROM sets the DS242X in the Overdrive Mode (OD = 1). All communication following this command has to occur at Overdrive Speed until a reset pulse of minimum 480 μ s duration resets all devices on the bus to regular speed (OD = 0).

When issued on a multidrop bus this command will set all Overdrive-supporting devices into Overdrive mode. To subsequently address a specific Overdrive-supporting device, a reset pulse at Overdrive speed has to be issued followed by a Match ROM or Search ROM command sequence. This will speed up the time for the search process. If more than one slave supporting Overdrive is present on the bus and the Overdrive Skip ROM command is followed by a read command, data collision will occur on the bus as multiple slaves transmit simultaneously (open drain pull-downs will produce a wire-AND result).

Overdrive Match ROM [69H]

The Overdrive Match ROM command, followed by a 64-bit ROM sequence transmitted at Overdrive Speed, allows the bus master to address a specific DS242X on a multidrop bus and to simultaneously set it in Overdrive Mode. Only the DS242X that exactly matches the 64-bit ROM sequence will respond to the subsequent memory function command. Slaves already in Overdrive mode from a previous Overdrive Skip or Match command will remain in Overdrive mode. All other slaves that do not match the 64-bit ROM sequence or do not support Overdrive will return to or remain at regular speed and wait for a reset pulse of minimum 480 μ s duration. The Overdrive Match ROM command can be used with a single or multiple devices on the bus.

ROM FUNCTIONS FLOW CHART Figure 9 cont'd



1-WIRE SIGNALING

The DS242X requires strict protocols to insure data integrity. The protocol consists of four types of signaling on one line: Reset Sequence with Reset Pulse and Presence Pulse, Write 0, Write 1 and Read Data. All these signals except presence pulse are initiated by the bus master. The DS242X can communicate at two different speeds, regular speed and Overdrive Speed. If not explicitly set into the Overdrive mode, the DS242X will communicate at regular speed. While in Overdrive Mode the fast timing applies to all wave forms.

The initialization sequence required to begin any communication with the DS242X is shown in Figure 10. A reset pulse followed by a presence pulse indicates the DS242X is ready to send or receive data given the correct ROM command and memory function command. The bus master transmits (TX) a reset pulse (t_{RSTL} , minimum 480 μ s at regular speed, 48 μ s at Overdrive Speed). The bus master then releases the line and goes into receive mode (RX). The 1-Wire bus is pulled to a high state via the pull-up resistor. After detecting the rising edge on the data pin, the DS242X waits (t_{PDH} ,

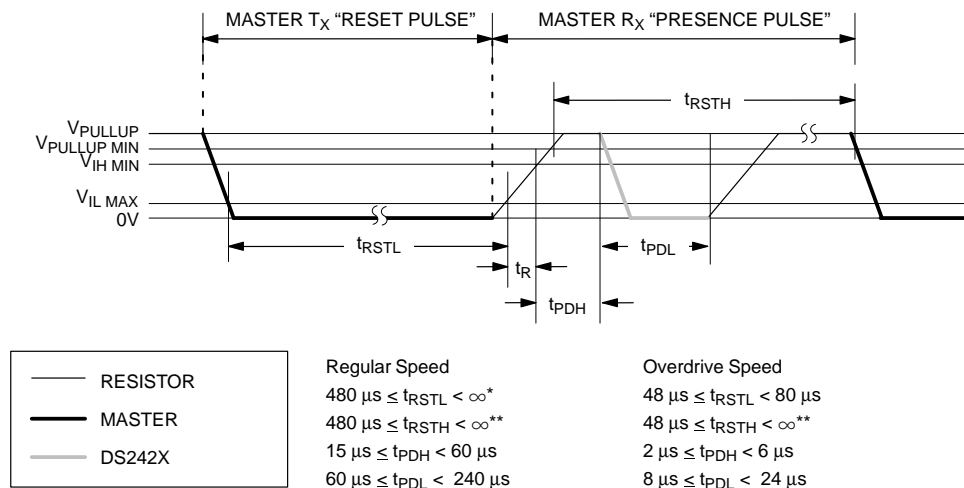
15–60 μ s at regular speed, 2–6 μ s at Overdrive speed) and then transmits the presence pulse (t_{PDL} , 60–240 μ s at regular speed, 8–24 μ s at Overdrive Speed).

A Reset Pulse of 480 μ s or longer will exit the Overdrive Mode returning the device to regular speed. If the DS242X is in Overdrive Mode and the Reset Pulse is no longer than 80 μ s the device will remain in Overdrive Mode.

Read/Write Time Slots

The definitions of write and read time slots are illustrated in Figure 11. All time slots are initiated by the master driving the data line low. The falling edge of the data line synchronizes the DS242X to the master by triggering a delay circuit in the DS242X. During write time slots, the delay circuit determines when the DS242X will sample the data line. For a read data time slot, if a "0" is to be transmitted, the delay circuit determines how long the DS242X will hold the data line low overriding the 1 generated by the master. If the data bit is a "1", the device will leave the read data time slot unchanged.

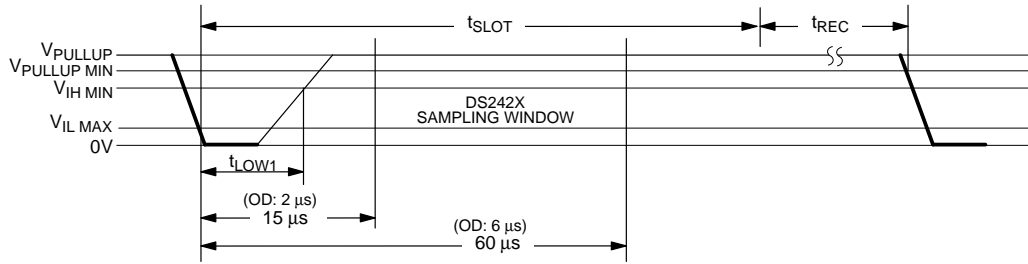
INITIALIZATION PROCEDURE "RESET AND PRESENCE PULSES" Figure 10



*IN ORDER NOT TO MASK INTERRUPT SIGNALING BY OTHER DEVICES ON THE 1-WIRE BUS, $t_{RSTL} + t_R$ SHOULD ALWAYS BE LESS THAN 960 μ s

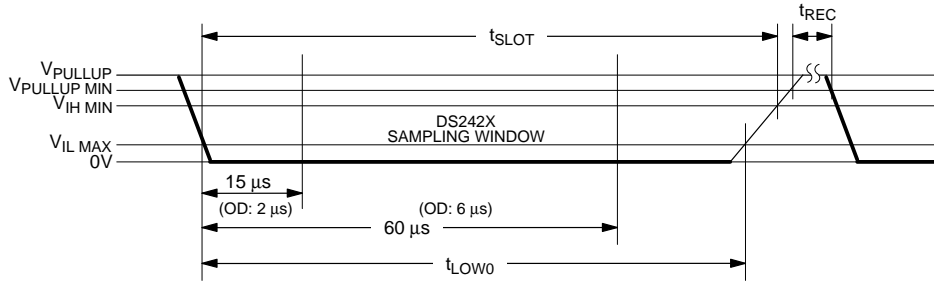
**INCLUDES RECOVERY TIME

READ/WRITE TIMING DIAGRAM Figure 11
Write-one Time Slot

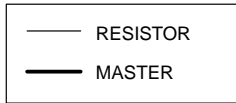


| | |
|---|---|
| Regular Speed | Overdrive Speed |
| $60 \mu\text{s} \leq t_{\text{SLOT}} < 120 \mu\text{s}$ | $6 \mu\text{s} \leq t_{\text{SLOT}} < 16 \mu\text{s}$ |
| $1 \mu\text{s} \leq t_{\text{LOW1}} < 15 \mu\text{s}$ | $1 \mu\text{s} \leq t_{\text{LOW1}} < 2 \mu\text{s}$ |
| $1 \mu\text{s} \leq t_{\text{REC}} < \infty$ | $1 \mu\text{s} \leq t_{\text{REC}} < \infty$ |

Write-zero Time Slot

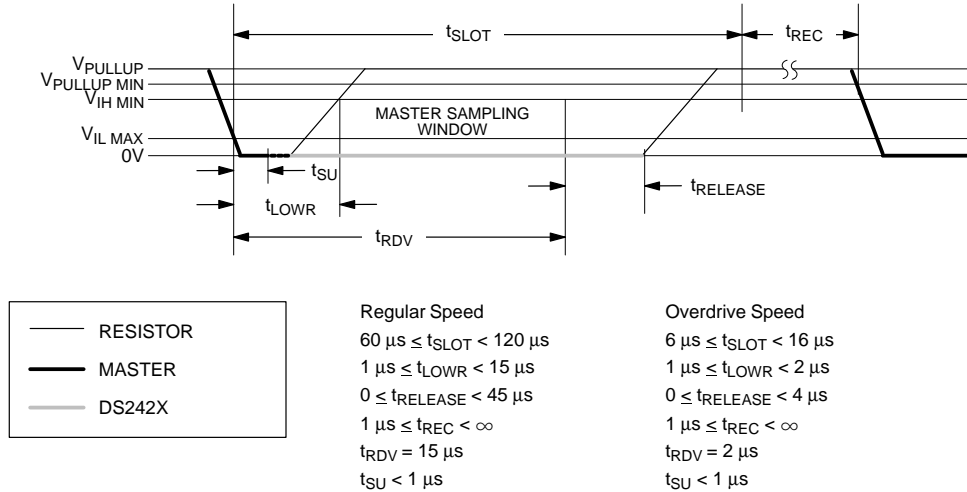


| | |
|---|---|
| Regular Speed | Overdrive Speed |
| $60 \mu\text{s} \leq t_{\text{LOW0}} < t_{\text{SLOT}} < 120 \mu\text{s}$ | $6 \mu\text{s} \leq t_{\text{LOW0}} < t_{\text{SLOT}} < 16 \mu\text{s}$ |
| $1 \mu\text{s} \leq t_{\text{REC}} < \infty$ | $1 \mu\text{s} \leq t_{\text{REC}} < \infty$ |



READ/WRITE TIMING DIAGRAM Figure 11 cont'd

Read-data Time Slot



CRC GENERATION

With the DS242X there are two different types of CRCs (Cyclic Redundancy Checks). One CRC is an 8-bit type and is stored in the most significant byte of the 64-bit ROM. The bus master can compute a CRC value from the first 56 bits of the 64-bit ROM and compare it to the value stored within the DS242X to determine if the ROM data has been received error-free by the bus master. The equivalent polynomial function of this CRC is: $X^8 + X^5 + X^4 + 1$. This 8-bit CRC is received in the true (non-inverted) form when reading the ROM of the DS242X. It is computed at the factory and lasered into the ROM.

The other CRC is a 16-bit type, generated according to the standardized CRC16-polynomial function $x^{16} + x^{15} + x^2 + 1$. This CRC is used for error detection when reading Data Memory using the Read Memory + Counter command and for fast verification of a data transfer when writing to the scratchpad. It is the same type of CRC as is used with NVRAM based iButtons for error detection within the iButton Extended File Structure. In contrast to the 8-bit CRC, the 16-bit CRC is always returned or sent in the complemented (inverted) form. A CRC-generator inside the DS242X chip (Figure 12) will calculate a new 16-bit CRC as shown in the command flow chart of Figure 7. The bus master

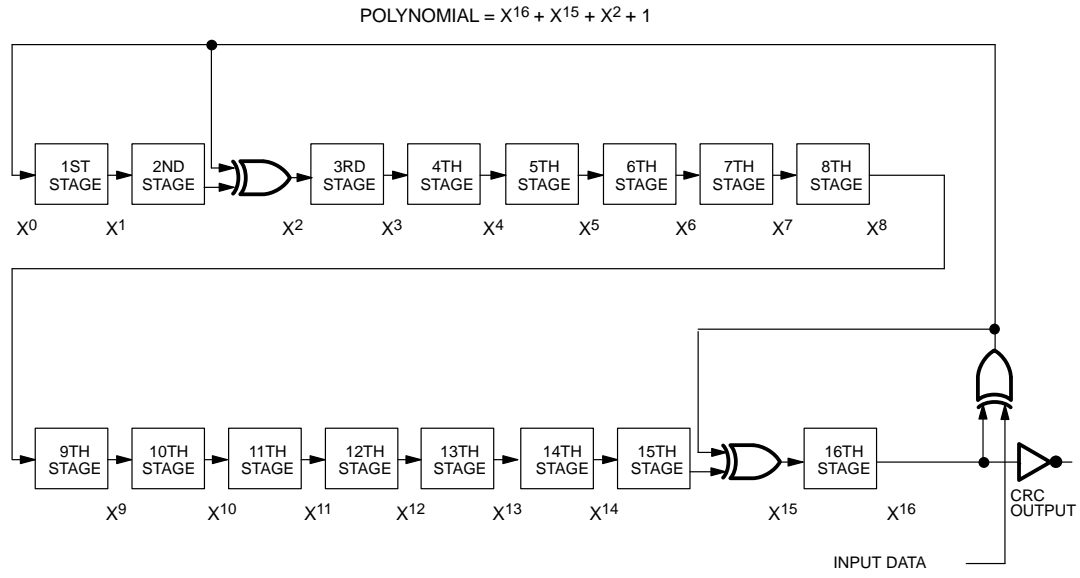
compares the CRC value read from the device to the one it calculates from the data and decides whether to continue with an operation or re-read the portion of the data with the CRC error.

With the initial pass through the Read Memory + Counter flow chart the 16-bit CRC value is the result of shifting the command byte into the cleared CRC generator, followed by the two address bytes, data bytes, value of the counter associated with the page and zero bits. Subsequent passes through the Read Memory + Counter flow chart will generate a 16-bit CRC that is the result of clearing the CRC generator and then shifting in the data bytes, the value of the counter and the zero bits.

With the Write Scratchpad command the CRC is generated by first clearing the CRC generator and then shifting in the command code, the Target Addresses TA1 and TA2 and all the data bytes. The DS242X will transmit this CRC only if the data bytes written to the scratchpad include scratchpad ending offset 11111b. The data may start at any location within the scratchpad.

For more details on generating CRC values including example implementations in both hardware and software, see the Book of DS19xx iButton Standards.

CRC-16 HARDWARE DESCRIPTION AND POLYNOMIAL Figure 12



ABSOLUTE MAXIMUM RATINGS*

| | |
|---------------------------------------|----------------------|
| Voltage on Any Pin Relative to Ground | -0.5V to +7.0V |
| Operating Temperature | -40°C to +85°C |
| Storage Temperature | -55°C to +125°C |
| Soldering Temperature | 260°C for 10 seconds |

* This is a stress rating only and functional operation of the device at these or any other conditions above those indicated in the operation sections of this specification is not implied. Exposure to absolute maximum rating conditions for extended periods of time may affect reliability.

DC CHARACTERISTICS(V_{PUP}=2.8V to 6.0V; V_{BAT}=2.8 to 5.5V; -40°C to +85°C)

| PARAMETER | SYMBOL | MIN | TYP | MAX | UNITS | NOTES |
|------------------------|-------------------|------|------------------|------|-------|-------|
| Logic 1 | V _{IH} | 2.2 | | | V | 1, 8 |
| Logic 0 | V _{IL} | -0.3 | | +0.8 | V | 1, 9 |
| Output Logic Low @4 mA | V _{OL} | | | 0.4 | V | 1 |
| Output Logic High | V _{OH} | | V _{PUP} | 6.0 | V | 1, 2 |
| Input Load Current | I _L | | 5 | | μA | 3 |
| Standby Current | I _{BATS} | | | 200 | nA | |
| I/O Operate Charge | Q _{BATO} | | | 200 | nC | 12 |

CAPACITANCE(t_A = 25°C)

| PARAMETER | SYMBOL | MIN | TYP | MAX | UNITS | NOTES |
|--------------|---------------------|-----|-----|-----|-------|-------|
| I/O (1-Wire) | C _{IN/OUT} | | 100 | 800 | pF | 6 |

COUNTER INPUT CHARACTERISTICS(V_{PUP}=2.8V to 6.0V; V_{BAT}=2.8 to 5.5V; -40°C to +85°C)

| PARAMETER | SYMBOL | MIN | TYP | MAX | UNITS | NOTES |
|---------------------------|-------------------|-------------------|----------------------|-----------------------|-------|-------|
| Trip Point | V _{TRIP} | | 1/2 V _{BAT} | | V | |
| Logic 1 | V _{INH} | V _{TRIP} | | V _{BAT} +0.3 | V | 1, 10 |
| Logic 0 | V _{INL} | -0.3 | | V _{TRIP} | V | 1 |
| Internal Pull-Up Resistor | R _{PI} | | 28 | | MΩ | 11 |
| Debounce Time | T _{DEB} | | 290 | | μs | |
| Pulse Width (Active Low) | T _{PW} | 1 | | | μs | |

AC CHARACTERISTICS REGULAR SPEED(V_{PUP}=2.8V to 6.0V; V_{BAT}=2.8 to 5.5V; -40°C to +85°C)

| PARAMETER | SYMBOL | MIN | TYP | MAX | UNITS | NOTES |
|----------------------|----------------------|------------|-----|-----|-------|-------|
| Time Slot | t _{SLOT} | 60 | | 120 | μs | |
| Write 1 Low Time | t _{LOW1} | 1 | | 15 | μs | |
| Write 0 Low Time | t _{LOW0} | 60 | | 120 | μs | |
| Read Low Time | t _{LOWR} | 1 | | 15 | μs | |
| Read Data Valid | t _{RDV} | exactly 15 | | | μs | |
| Release Time | t _{RELEASE} | 0 | 15 | 45 | μs | |
| Read Data Setup | t _{SU} | | | 1 | μs | 5 |
| Recovery Time | t _{REC} | 1 | | | μs | |
| Reset Time High | t _{RSTH} | 480 | | | μs | 4 |
| Reset Time Low | t _{RSTL} | 480 | | | μs | 7 |
| Presence Detect High | t _{PDH} | 15 | | 60 | μs | |
| Presence Detect Low | t _{PDL} | 60 | | 240 | μs | |

AC CHARACTERISTICS OVERDRIVE SPEED(V_{PUP}=2.8V to 6.0V; V_{BAT}=2.8 to 5.5V; -40°C to +85°C)

| PARAMETER | SYMBOL | MIN | TYP | MAX | UNITS | NOTES |
|----------------------|----------------------|-----------|-----|-----|-------|-------|
| Time Slot | t _{SLOT} | 6 | | 16 | μs | |
| Write 1 Low Time | t _{LOW1} | 1 | | 2 | μs | |
| Write 0 Low Time | t _{LOW0} | 6 | | 16 | μs | |
| Read Low Time | t _{LOWR} | 1 | | 2 | μs | |
| Read Data Valid | t _{RDV} | exactly 2 | | | μs | |
| Release Time | t _{RELEASE} | 0 | 1.5 | 4 | μs | |
| Read Data Setup | t _{SU} | | | 1 | μs | 5 |
| Recovery Time | t _{REC} | 1 | | | μs | |
| Reset Time High | t _{RSTH} | 48 | | | μs | 4 |
| Reset Time Low | t _{RSTL} | 48 | | 80 | μs | |
| Presence Detect High | t _{PDHIGH} | 2 | | 6 | μs | |
| Presence Detect Low | t _{PDLOW} | 8 | | 24 | μs | |

NOTES:

1. All voltages are referenced to ground.
2. V_{PUP} = external pull-up voltage.
3. Input load is to ground.
4. An additional reset or communication sequence cannot begin until the reset high time has expired.
5. Read data setup time refers to the time the host must pull the 1-Wire bus low to read a bit. Data is guaranteed to be valid within 1 μ s of this falling edge.
6. Capacitance on the data pin could be 800 pF when power is first applied. If a 5 k Ω resistor is used to pull up the data line to V_{PUP} , 5 μ s after power has been applied the parasite capacitance will not affect normal communications.
7. The reset low time (t_{RSTL}) should be restricted to a maximum of 960 μ s, to allow interrupt signaling, otherwise, it could mask or conceal interrupt pulses.
8. V_{IH} is a function of the external pull-up resistor and V_{PUP} .
9. Under certain low voltage conditions V_{ILMAX} may have to be reduced to as much as 0.5V to always guarantee a presence pulse.
10. The counter inputs are designed for interfacing to mechanical switches and piezo sensors. If interfacing to digital circuits, one should use an open-drain driver.
11. A lower impedance pull-up, e. g., for reed switches, can be achieved by connecting an external resistor from the counter input to V_{BAT} .
12. Read and write scratchpad (all 32 bytes) at V_{BAT} of 3.0 V.