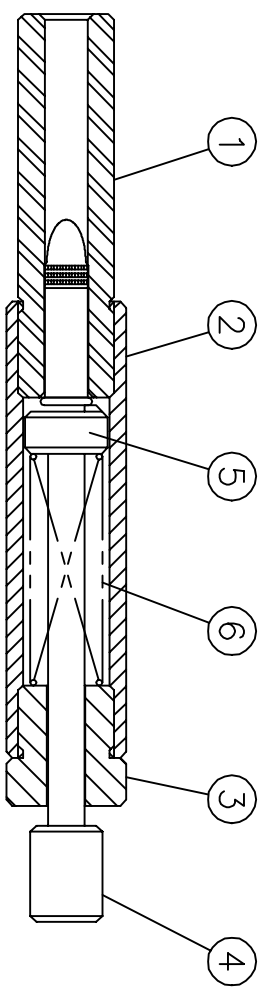


NOTES:

- 1) FOR ACADEMIC USE ONLY. CONSTRUCTION AND/OR POSSESSION MAY BE IN VIOLATION OF LOCAL, STATE AND FEDERAL STATUTES.
- 2) INTENDED FOR USE WITH .22 SHORT OR .22 LR SUBSONIC AMMUNITION ONLY. DO NOT USE .22 LR HIGH VELOCITY AMMUNITION.



- 3) THE SPRING (DETAIL No. 6) PROVIDES THE FORCE NEEDED TO FIRE THE ROUND, BUT ALSO ABSORBS THE RECOIL FROM THE SPENT CASING AS THE BULLET EXITS THE BARREL. SELECTION OF THE CORRECT SPRING MAY REQUIRE SOME TESTING -- IF THE SPRING IS TOO WEAK, IT WILL BE COMPRESSED SOLID AND PERMANENTLY DAMAGED.

- 4) WHEN A ROUND IS PLACED IN THE CHAMBER AND IS READY FOR FIRING, THE STRIKER IS RESTING ON THE CARTRIDGE RIM. DROPPING THE DEVICE OR HITTING THE STRIKER MAY CAUSE THE ROUND TO FIRE PREMATURELY. AS WITH ANY FIREARM, EXERCISE EXTREME CAUTION.

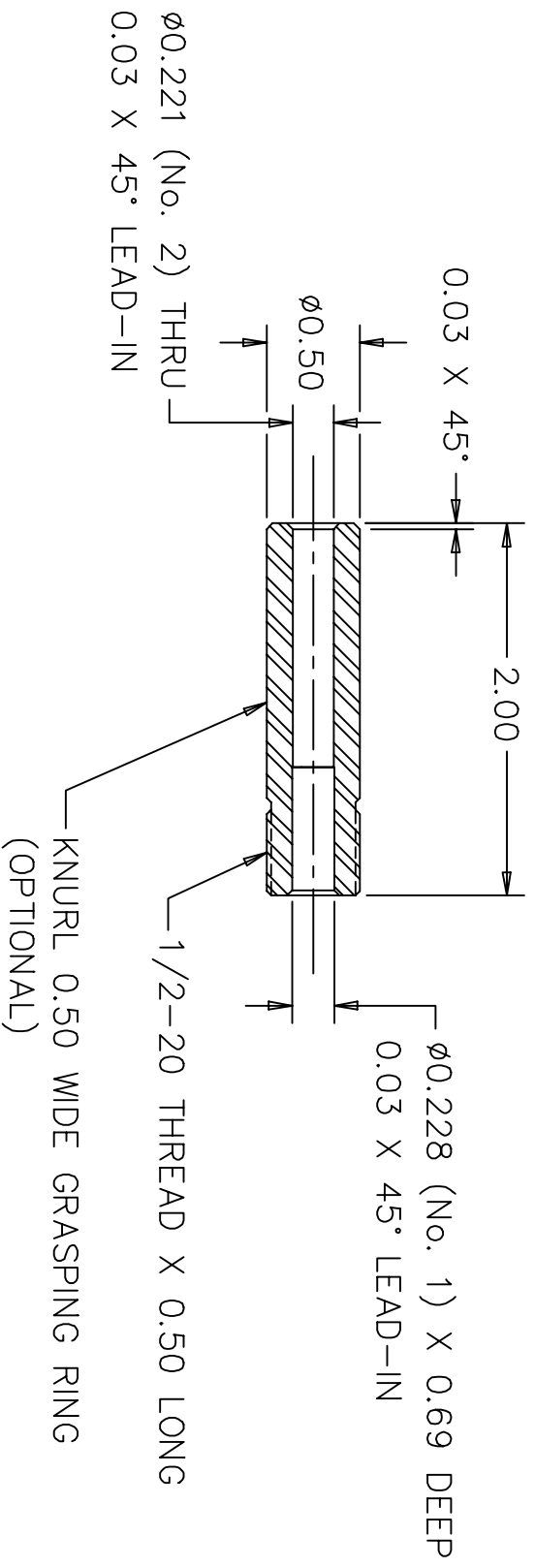
- 5) AND REMEMBER...  
WIPE YOUR FEET,  
DON'T SLAM THE  
DOOR, EAT YOUR  
VEGETABLES AND  
SAY YOUR  
PRAYERS.

ITEM	QTY	SHEET	DESCRIPTION	MATERIAL
6	1	1	SPRING - $\phi 0.38$ OD X 1.5 LG	PURCHASED
5	1	5	STRIKER ASSEMBLY	SEE SHEET 5
4	1	4	COCKING KNOB	SEE SHEET 4
3	1	4	END CAP	SEE SHEET 4
2	1	3	BODY	SEE SHEET 3
1	1	2	BARREL	SEE SHEET 2

THE DESIGN OF THIS DEVICE IS NOT  
COPYRIGHTED AND IS PUBLIC DOMAIN.  
IT MAY NOT TO BE SOLD FOR PROFIT.

EL DISEÑO DE ESTE DISPOSITIVO NO ES  
COPYRIGHTED Y ES PUBLIC DOMAIN. NO  
PUEDE SER VENDIDO PARA EL BENEFICIO.

TOLERANCES UNLESS OTHERWISE SPECIFIED			TITLE	
.XX $\pm$ 0.010	.XXX $\pm$ 0.005	ANGLES $\pm$ 1°	PEN GUN - Mk1	
SCALE	DRAWN BY	DATE	REV	
FULL	E. MARTILLO	29 SEPT 03	DWG NO. 030929	
APPROVED			---	



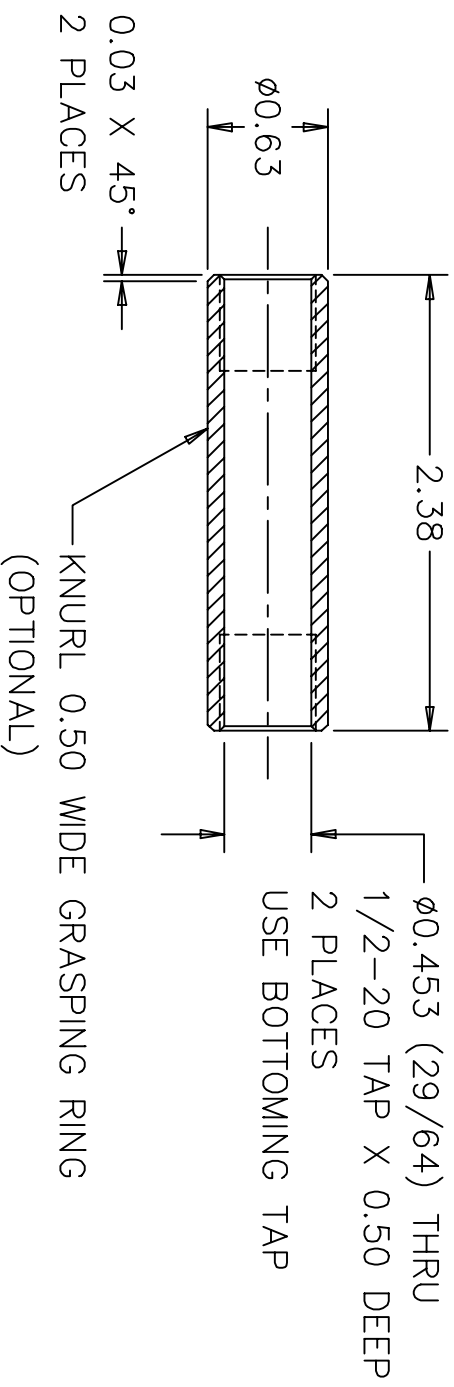
① BARREL

MATERIAL: STEEL OR BRASS  
 QUANTITY: 1

OPTIONAL MATERIAL: HEX HEAD CAP SCREW  
 1/2-20 X 1 1/2 LONG

THE DESIGN OF THIS DEVICE IS NOT  
 COPYRIGHTED AND IS PUBLIC DOMAIN.  
 IT MAY NOT TO BE SOLD FOR PROFIT.  
 EL DISEÑO DE ESTE DISPOSITIVO NO ES  
 COPYRIGHTED Y ES PUBLIC DOMAIN. NO  
 PUEDE SER VENDIDO PARA EL BENEFICIO.

TOLERANCES UNLESS OTHERWISE SPECIFIED			TITLE	
.XX ± 0.010	.XXX ± 0.005	ANGLES ± 2°	PEN GUN — MK1	
SCALE	DRAWN BY	DATE		
FULL	E. MARTILLO	29 SEPT 03		
APPROVED				
			DWG NO.	030929
			REV	—



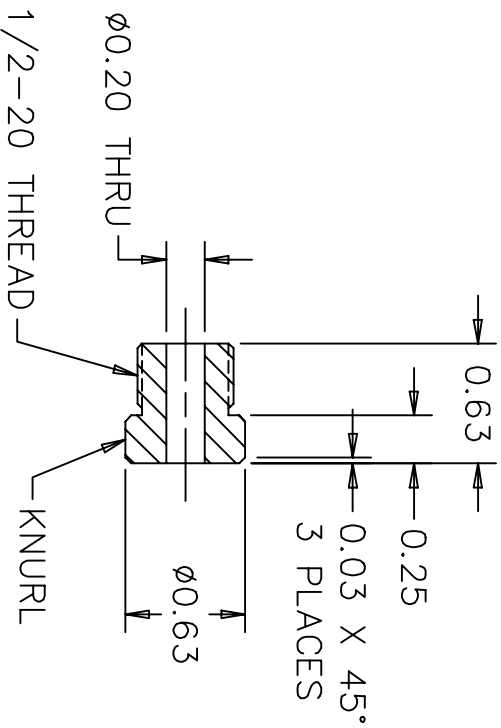
② BODY

MATERIAL: STEEL, BRASS OR ALUMINUM  
 QUANTITY: 1

OPTIONAL MATERIAL: STEEL TUBING  
 $\phi 5/8$  OD X 0.083 WALL ( $\phi 0.459$  ID)

THE DESIGN OF THIS DEVICE IS NOT  
 COPYRIGHTED AND IS PUBLIC DOMAIN.  
 IT MAY NOT TO BE SOLD FOR PROFIT.  
 EL DISEÑO DE ESTE DISPOSITIVO NO ES  
 COPYRIGHTED Y ES PUBLIC DOMAIN. NO  
 PUEDE SER VENDIDO PARA EL BENEFICIO.

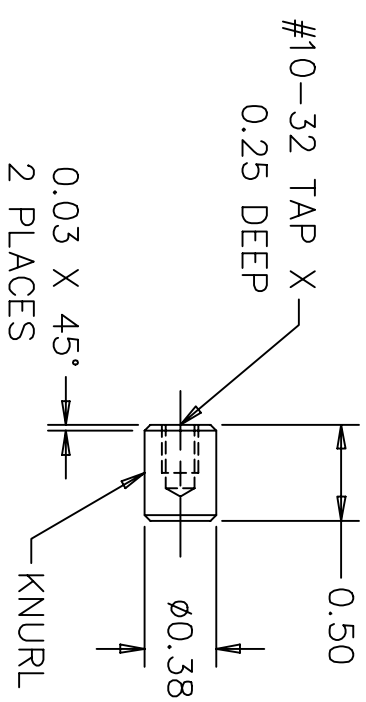
TOLERANCES UNLESS OTHERWISE SPECIFIED			TITLE			
.XX ± 0.010	.XXX ± 0.005	ANGLES ± 2°	PEN GUN — MK1			
SCALE	DRAWN BY	DATE				
FULL	E. MARTILLO	29 SEPT 03				
APPROVED			DWG NO.	030929	REV	—



③ END CAP

MATERIAL: STEEL, BRASS, ALUMINUM OR PLASTIC  
QUANTITY: 1

OPTIONAL MATERIAL: HEX HEAD CAP SCREW  
1/2-20 X 3/4 LONG



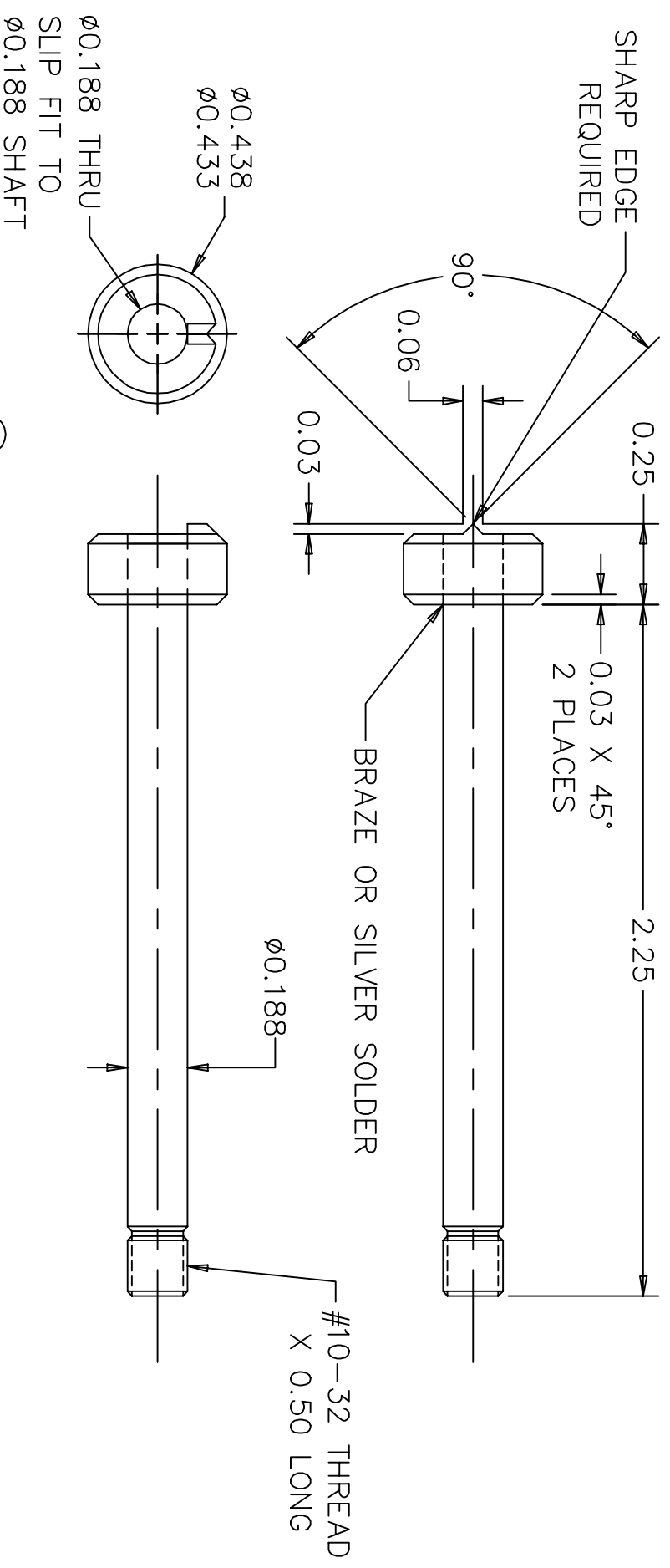
④ KNOB

MATERIAL: STEEL, BRASS, ALUMINUM OR PLASTIC  
QUANTITY: 1

THE DESIGN OF THIS DEVICE IS NOT COPYRIGHTED AND IS PUBLIC DOMAIN. IT MAY NOT TO BE SOLD FOR PROFIT.  
EL DISEÑO DE ESTE DISPOSITIVO NO ES COPYRIGHTED Y ES PUBLIC DOMAIN. NO PUEDE SER VENDIDO PARA EL BENEFICIO.

TOLERANCES UNLESS OTHERWISE SPECIFIED		ANGLES ± 2°	
.XX ± 0.010	.XXX ± 0.005		
SCALE	DRAWN BY	DATE	
FULL	E. MARTILLO	29 SEPT 03	
APPROVED			

TITLE	DWG NO.	REV
PEN GUN — Mk1	030929	—



⑤ STRIKER ASSEMBLY

MATERIAL: STEEL OR BRASS  
BRAZE OR SILVER SOLDER WHERE INDICATED  
QUANTITY: 1

OPTIONAL CONSTRUCTION: MACHINE FROM BAR STOCK

<p>THE DESIGN OF THIS DEVICE IS NOT COPYRIGHTED AND IS PUBLIC DOMAIN. IT MAY NOT TO BE SOLD FOR PROFIT.</p> <p>EL DISEÑO DE ESTE DISPOSITIVO NO ES COPYRIGHTED Y ES PUBLIC DOMAIN. NO PUEDE SER VENDIDO PARA EL BENEFICIO.</p>				TOLERANCES UNLESS OTHERWISE SPECIFIED		TITLE	
				.XX ± 0.010	.XXX ± 0.005	ANGLES ± 2°	
SCALE		DRAWN BY		DATE		DWG NO. 030929	
2X		E. MARTILLO		29 SEPT 03			
APPROVED							
						REV —	