

6VDC TO 110VAC INVERTER

THIS SPECIFIC INVERTER PUSHES AND PULLS ITS OUTPUT THROUGH THE SECONDARY WINDINGS OF TWO 6 TO 55 VOLT STEP UP TRANSFORMERS CONNECTED IN SERIES. TWO HIGH POWER TIP 31C TRANSISTORS ARE USED FOR THE DC TO AC CONVERSION. SIMPLE.

UNITS SIMILAR TO THIS ONE RUN FOR AROUND 39.99 TO 49.99 IN STORES, AND THEY USE THE SAME BASIC CIRCUIT DESIGN OR ONES VERY SIMILAR TO THIS ONE.

THIS UNIT CAN BE 12VDC DRIVEN THE USE OF VOLTAGE DIVIDERS OR VOLTAGE REGULATORS USING ZENER DIODES MAKE GOOD CHOICES...SEE BELOW.

PARTS FOR ZENER VOLTAGE REGULATOR:

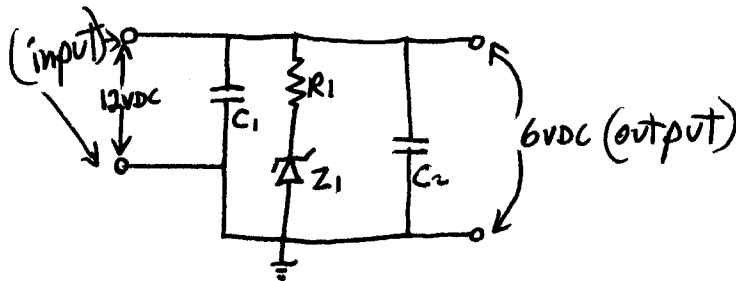
R1=6 OHMS RATED 25 WATTS.

Z1=6 VOLT ZENER RATED 20 WATTS.

C1=12 VOLT AT 100uF.

C2=6 VOLT AT 100uF.

HERE IS THE CIRCUIT YOU NEED TO BUILD:



PARTS LIST FOR THE INVERTER CIRCUIT:

Q1, Q2 = TIP 31C POWER TRANSISTORS MOUNTED ON HEAT SINKS OR FANS.

R1, R2 = 1000 OHMS AT 25 WATTS EACH.

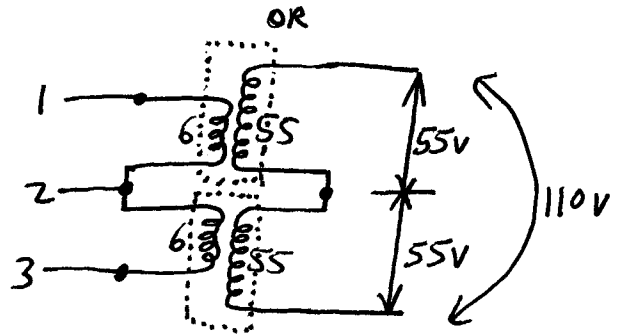
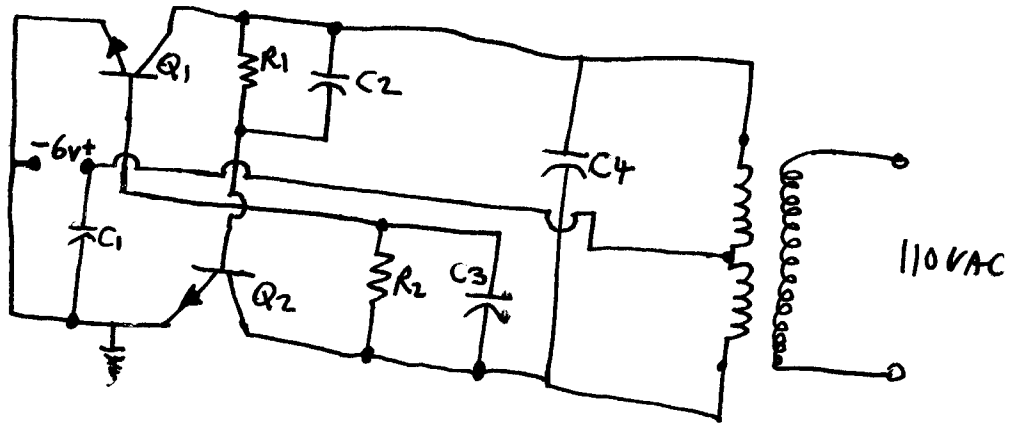
C1 = 10uF AT 6 VOLTS.

C2, C3, C4 = 50V AT .047uF DISC CAPS.

T1, T2 = 6V TO 55V STEP UP TRANSFORMERS OR ONE 12V TO 110V W/ CNTR TAP PRIMARY.

HERE IS THE SCHEMATIC TO BUILD IT:

MAKE SURE YOU SHIELD THE ENTIRE CIRCUIT USING FOIL THAT IS GROUNDED, THIS HELPS ELIMINATE NOISE IN THE SECONDARY 110 LINE.



WE AT UUE ARE NOT RESPONSIBLE FOR THE USE OR MISUSE OF ANY INFORMATION CONTAINED IN THIS MATERIAL OR ANY OTHER MATERIAL OBTAINED FROM UUE OR IT'S EMPLOYEES. WE ARE NOT RESPONSIBLE FOR ANY LEGALITIES PERTAINING TO THIS MATERIAL.
