

EXTREMELY HIGH POWER PARABOLIC EMP WEAPON

WE ARE NOT LIABLE FOR ANY ACTIONS, OUTCOMES, DAMAGES, HARM, DEATH, ETC FROM CONSTRUCTION, OR EXPERIMENTATION OF THIS DEVICE. DO NOT BUILD IT!!!

THANKS TO TESLA AND SOME OTHER GREAT ENGINEERS FROM UUE AND OUR OWN GOVERNMENT FOR THE CONCEPTS AND THEORIES BEHIND THIS INGENIOUS DESIGN. CAUTION MUST BE USED WITH THIS DEVICE, IT IS CAPABLE OF KNOCKING AIRPLANES OUT THE SKY, DESTROYING SATELLITES AND EVEN HARMING OR KILLING PEOPLE AND ANIMALS. IF YOU BUILD AND USE THIS DEVICE YOU WILL BE SUBJECT TO ALL LIABILITY FROM IT, YOU MUST NOT USE THIS DEVICE TO ENDANGER PEOPLE OR PROPERTY. THIS DEVICE CAN TURN OFF AND DESTROY ELECTRONIC AND ORGANIC MATERIALS. DO NOT AIM AT PEOPLE OR PROPERTY. IT MAY BE ILLEGAL TO BUILD, OWN OR USE THIS DEVICE IN YOUR COUNTRY, CHECK YOUR LOCAL AND GOV LAWS FIRST.

THE RANGE: AROUND 1-2 MILES.

THE CONCEPT: BASED ON TESLA DESIGN AND CONCEPTS OF MAGNETIC VORTEX FIELDS, PARABOLIC REFLECTION THEORIES AND MICROWAVE RADIATION. TESLA KNEW THAT MAGNETIC FIELDS MUST COLLAPSE, BUT HOW THEY COLLAPSE MAKES ALL THE DIFFERENCE IN THE WORLD. UPON ENERGIZING THE PRIMARY COIL, IT ACTS AS BOTH AN ANTENNA AND A FIELD GENERATOR. IT ENERGIZES THE SECONDARY COIL WITH A GREATER FIELD AND AS A WHOLE ACTS AS AN AMPLIFIER FOR THE VARIED FREQUENCIES GENERATED THROUGH THE ARC GAP AND RESONANCE OF THE COILS. IT IS THEN REFLECTED OFF OF THE PARABOLIC DISH AND DIRECTED AT A 90 DEGREE ANGLE OR PARALLEL TO IT'S PERPENDICULAR COIL. IN ADDITION TO THIS EM FIELD, MICROWAVE RADIATION IS ALSO DIRECTED IN THE SAME MANNER. ITS VERY HARD TO UNDERSTAND BUT DO SOME HOMEWORK AND YOU WILL. THE THIRD CONCEPT UTILIZES MICROWAVE RADIATION-I DON'T THINK I HAVE TO EXPLAIN MICROWAVE RADIATION CAPABILITIES. JUST PUT A WALKMAN IN THE MICROWAVE AND TURN IT ON, I THINK YOU CAN CONCIEVE WHAT WOULD HAPPEN.

FOR INFORMATION ONLY!! DO NOT USE THIS DEVICE FOR DESTRUCTIVE PURPOSES!!!

=====

PARTS LIST:

HARDWARE

PIPE1	1	PVC PIPE W/ 1.5 INCH DIAMETER, **3 FT LONG.
TAPE	ROLL	CLOTH TAPE.
PAINT	CAN	ONE CAN OF LIQUID ELECTRIC TAPE, HV INSULATION.
GLUE	TWO TYPES	HIGH TEMP SILICON, HIGH TEMP EPOXY.
DISH	PARABOLIC	3-4 FT DIAMETER PARABOLIC DISH, **1-2 FT DEEP (ALUM).

ELECTRICAL

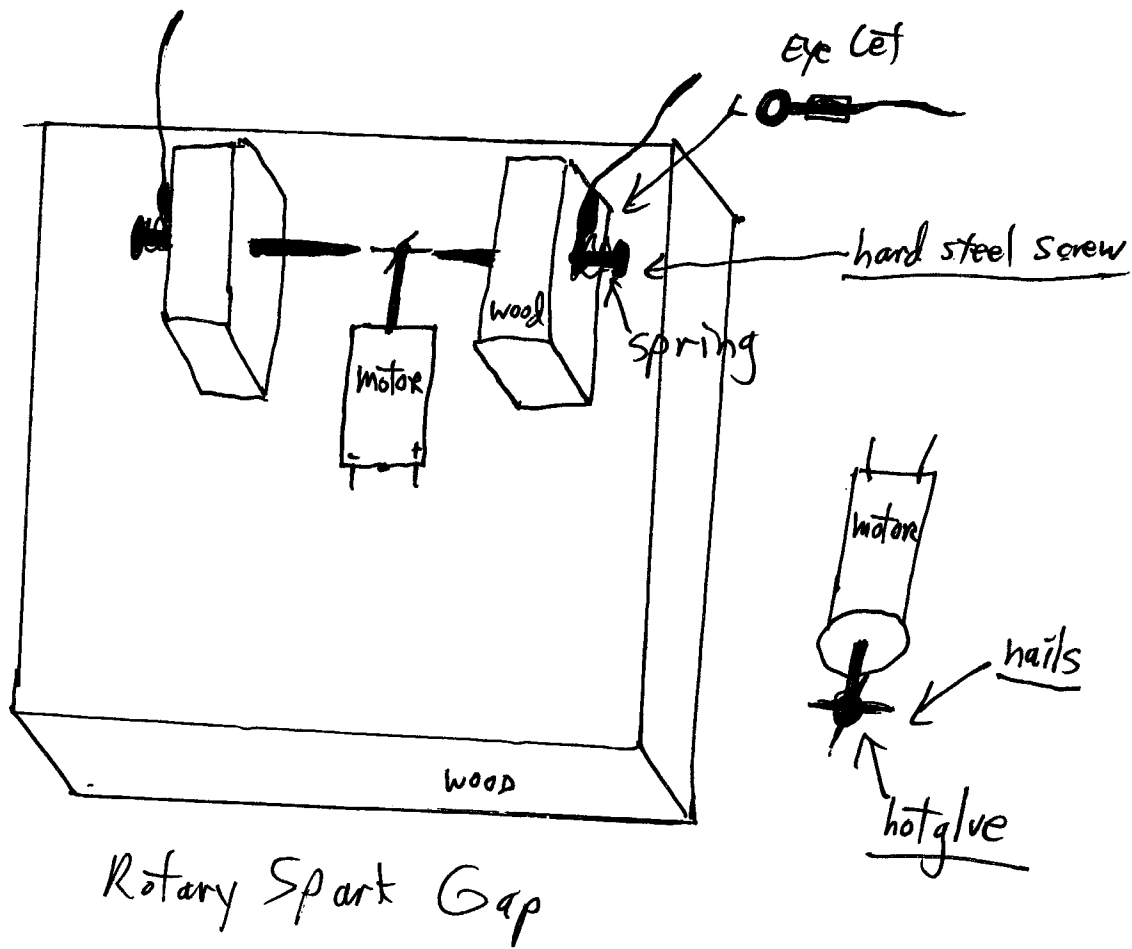
TRAN1	1	10KVAC @ 15-30mA TRANSFORMER. (110VAC INPUT)
RSPK	1	ROTARY SPARK GAP. FIG 1.
WIRE1	ROLL	16 GUAGE FOR HARNESSING.
WIRE2	ROLL	30 GUAGE FOR SECONDARY.
CAPS	1 EACH	.0001pF 250KVDC & .1uF 20-22KVDC CAPACITORS.
TUBING	4FT	1/4" COPPER TUBING FROM HARDWARE STORE.
MAG1	1	1400 WATT MAGNETRON.
MPOW1	1 UNIT	1400 WATT MAG POWER SUPPLY.
SWITCH	1	HIGH POWER TOGGLE SWITCH.

WE ARE NOT LIABLE FOR ANY DAMAGES, HARM, DEATH, ACCIDENTS, ETC CAUSED BY CONSTRUCTION, USE OR EXPERIMENTATION OF THIS DEVICE OR DEVICES SIMILAR TO IT.

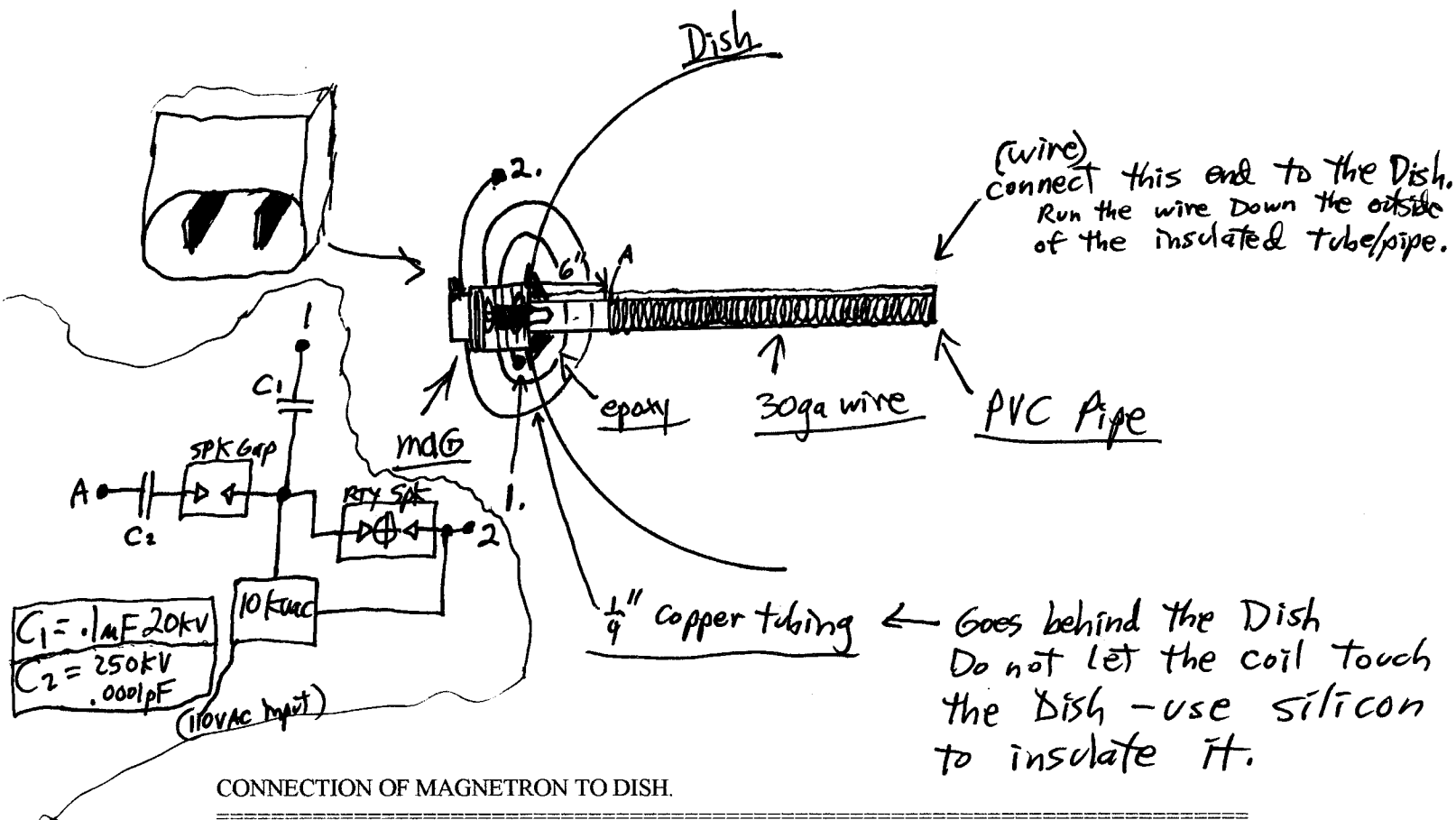
FIG 1.....SPARK GAP CONTRUCTION...

PARTS NEEDED:

- TWO 1/4 INCH NUTS AND BOLTS.
- 2X4 WOOD...4INCHES LONG.
- 12 GA WIRE FOR HARNESSING.
- MOTOR WITH ROTOR, PLASTIC.
- HOT GLUE GUN



WRAP 30 INCHES OF WIRE (FLAT AND LEVEL NOT BUNCHED UP) ON THE PIPE, IT MUST BE 6 INCHES AWAY FROM THE MAGNETRON, MOUNTED ON THE FRONT OF THE DISH IN THE CENTER.

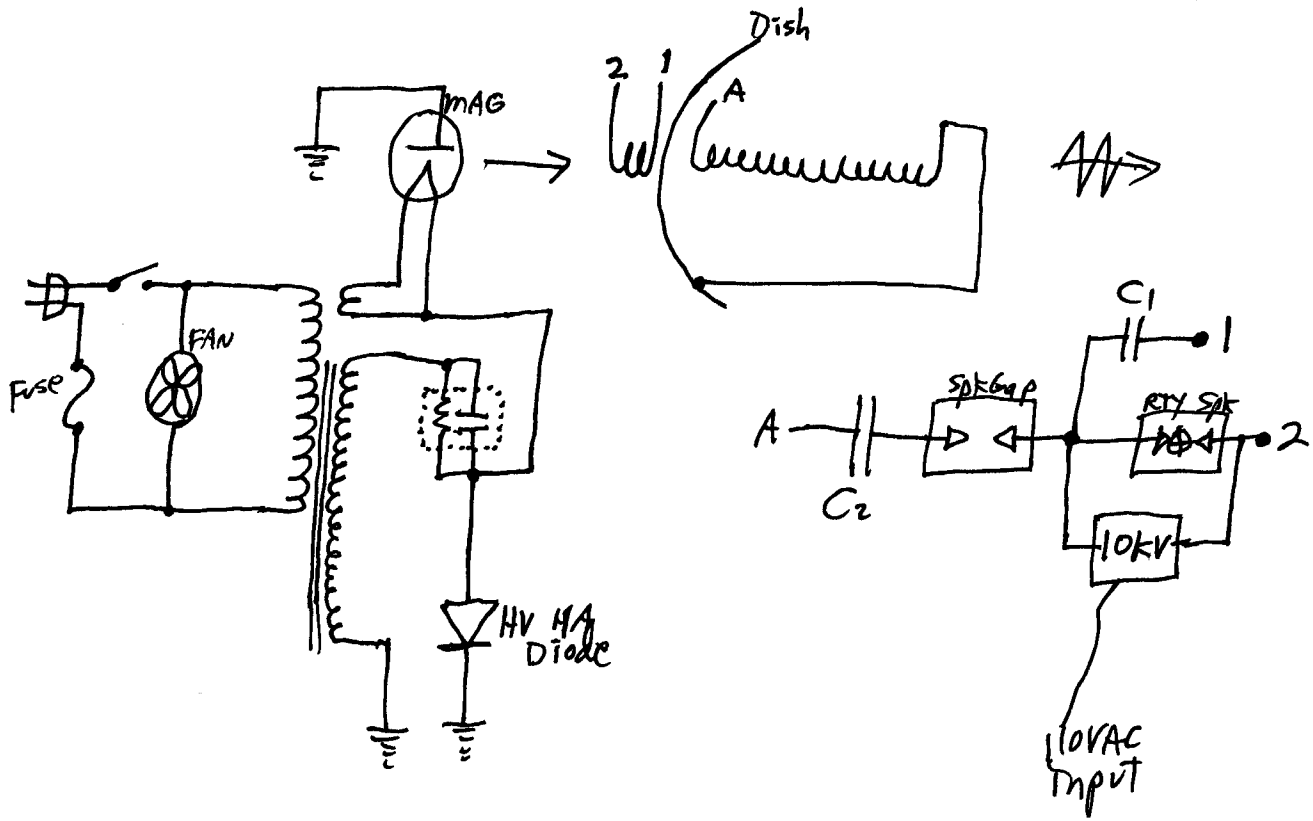


THIS IS A DANGEROUS TASK....IF IT IS NOT DONE CORRECTLY IT COULD BE CATASTROPHIC.

THE DISH ACTS AS A WAVE GUIDE FOR THE MICROWAVE RADIATION. IT BOUNCES THE 3CM WAVELENGTH MICROWAVES OFF THE PARABOLIC DISH THUS DIRECTING THE MICROWAVES FORWARD OR 90 DEGREES FROM THE INITIAL OUTLET OF RADIATION.

THE NIPPLE PROTRUDING FROM THE FRONT OF THE MAGNETRON IS THE OUTLET FOR THE MICROWAVES, IT EMITS PERPENDICULAR TO THE LENGTH OF THE NIPPLE. YOU MUST FASTEN THE MAGNETRON TO THE DISH BY CUTTING OUT A 1 INCH HOLE IN THE CENTER OF THE DISH AND MOUNT THE MAGNETRON USING A TORCH AND FLUX SOLDER. IT IS VERY IMPORTANT THAT YOU SOMEHOW CONNECT A COOLING CAGE FAN ONTO THE MAGNETRON. IT WILL BURN OUT IF YOU DO NOT COOL IT. ALSO PLACE SHIELDING AROUND THE MAGNETRON AFTER YOU INSTALL IT. THE SHIELDING SHOULD COVER THE ENTIRE MAGNETRON AND POWER SUPPLY. USE ALUMINUM SCREEN FOR SHIELDING.

DETAILED SCHEMATIC



PICTORAL DIAGRAM OF FINAL DEVICE.

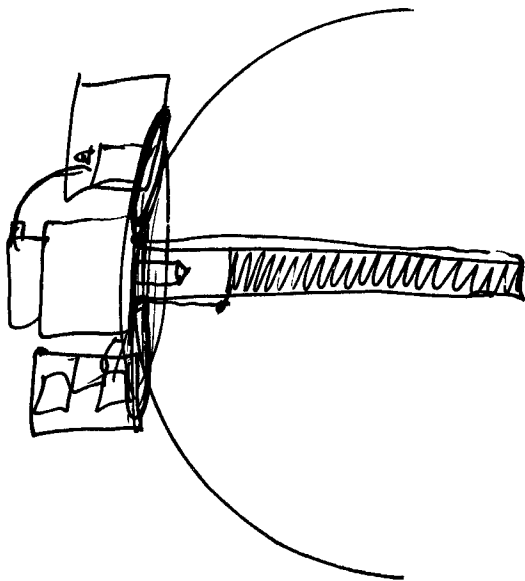
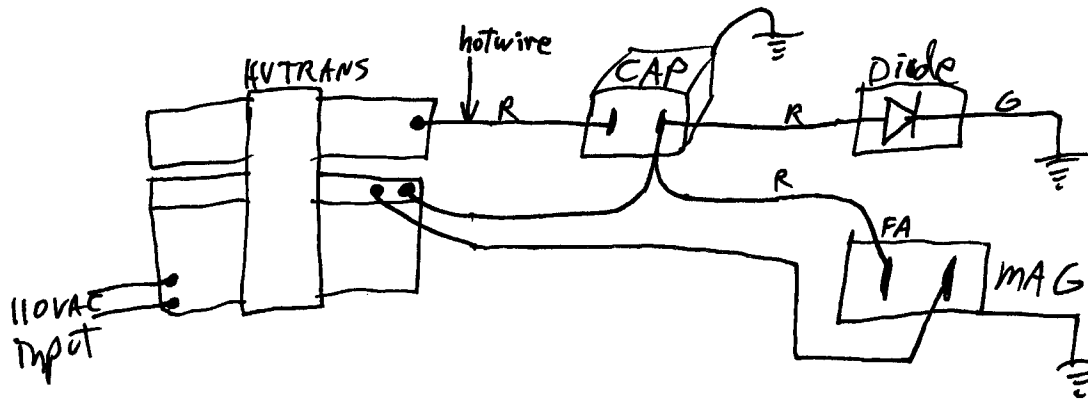


DIAGRAM SCHEMATIC OF THE MAGNETRON POWER SUPPLY, WIRING OF MAG PS.



HOOKE THE SPARK GAP UP TO THE COIL AND THE POWER SUPPLY. THIS WILL CAUSE RANDOM FREQUENCY TO BE GENERATED THROUGH THE TUBE AND HELP MODULATE THE MICROWAVES WITH THE SIGNAL.

WE ARE NOT LIABLE FOR ANY DAMAGES, DEATH, HARM, DESTRUCTION, USE OR MISUSE OF THIS DEVICE OR DEVICES LIKE IT. THE USER OF THE DEVICE IS SOLEY LIABLE FOR ALL ACTIONS AND OUTCOMES PERFORMED WITH THE DEVICE.