

## Contents

|                                  |    |
|----------------------------------|----|
| Features .....                   | 1  |
| Applications .....               | 1  |
| Pin Assignment .....             | 1  |
| Block Diagram .....              | 1  |
| Selection Guide .....            | 2  |
| Absolute Maximum Ratings .....   | 2  |
| Electrical Characteristics ..... | 3  |
| Test Circuits .....              | 11 |
| Technical Terms .....            | 12 |
| Operation.....                   | 13 |
| Transient Response .....         | 14 |
| Standard Circuit.....            | 17 |
| Application Circuits .....       | 17 |
| Notes on Design .....            | 19 |
| Dimensions.....                  | 20 |
| Markings.....                    | 20 |
| Package Power Dissipation .....  | 21 |
| Taping Dimensions .....          | 22 |
| Characteristics.....             | 25 |
| Measuring Circuits .....         | 31 |
| Frequently Asked Questions.....  | 32 |

# HIGH-PRECISION VOLTAGE REGULATOR

# S-812XXSG Series

The S-812XXSG Series is a three-terminal positive voltage regulator made using the CMOS process. Since the S-812XXSG Series has higher precision output voltage and consumes less current than existing three-terminal voltage regulators, battery-powered portable equipment can have a higher performance and a longer service life.

## ■ Features

- Low power consumption (2.5  $\mu$ A max.)
  - High accuracy of output voltage  
 $\pm 2\%$  :  $V_{OUT} \geq 2.7$  V  
 $\pm 2.4\%$  :  $V_{OUT} \leq 2.6$  V
  - Small input/output voltage difference  
(S-81250SG: 160 mV typ.  $I_{OUT} = 10$  mA)
  - Low temperature coefficient of output voltage  
(S-81250SG:  $\pm 0.625$  mV/ $^{\circ}$ C typ.)
  - Wide operating voltage range  
(S-81250SG: 16 V max.)
  - Good line regulation  
(S-81250SG: 40 mV typ.  $I_{OUT} = 1\mu$ A to 40 mA)
- TO-92, SOT-89-3 and SOT-23-5 package

## ■ Block Diagram

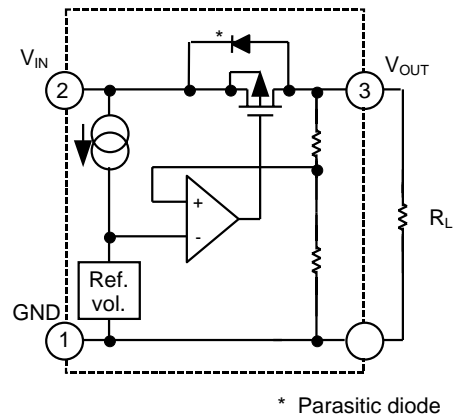


Figure 1

## ■ Applications

- Constant voltage power supply of battery-powered equipment, communications equipment, video equipment and others

## ■ Pin Assignment

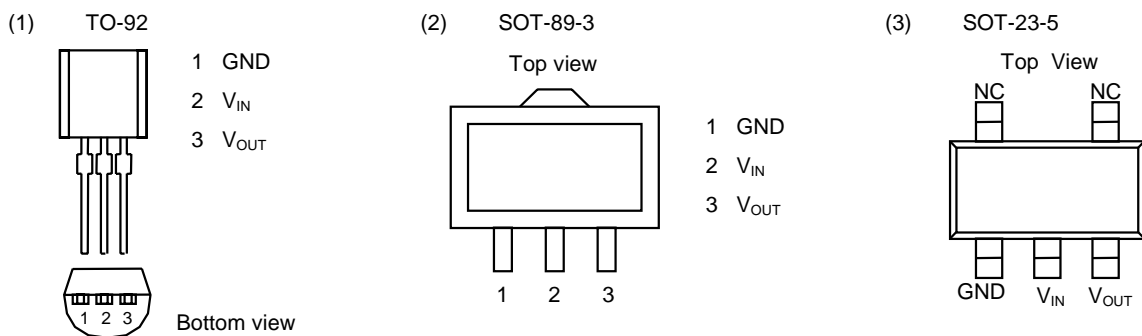


Figure 2

# HIGH PRECISION VOLTAGE REGULATOR

## S-812XXSG Series

### ■ Selection Guide

Table 1

| Output voltage | TO-92 *1     | SOT-89-3 *2       | SOT-23-5 *2    |
|----------------|--------------|-------------------|----------------|
| 1.1±2.4%       | S-81211SGY-X | S-81211SGUP-DQA-X | S-81211SG-QA-X |
| 1.5±2.4%       | S-81215SGY-X | S-81215SGUP-DQK-X | S-81215SG-QK-X |
| 1.7±2.4%       |              |                   | S-81217SG-QQ-X |
| 1.8±2.4%       |              |                   | S-81218SG-QR-X |
| 2.0±2.4%       | S-81220SGY-X | S-81220SGUP-DQS-X | S-81220SG-QS-X |
| 2.1±2.4%       |              | S-81221SGUP-DQU-X |                |
| 2.3±2.4%       | S-81223SGY-X |                   | S-81223SG-QW-X |
| 2.4±2.4%       | S-81224SGY-X | S-81224SGUP-DQX-X | S-81224SG-QX-X |
| 2.5±2.4%       | S-81225SGY-X | S-81225SGUP-DQH-X | S-81225SG-QH-X |
| 2.7±2.0%       |              | S-81227SGUP-DQZ-X |                |
| 3.0±2.0%       | S-81230SGY-X | S-81230SGUP-DQB-X | S-81230SG-QB-X |
| 3.3±2.0%       | S-81233SGY-X | S-81233SGUP-DQF-X | S-81233SG-QF-X |
| 3.5±2.0%       | S-81235SGY-X | S-81235SGUP-DQI-X | S-81235SG-QI-X |
| 3.6±2.0%       |              | S-81236SGUP-DQ7-X |                |
| 3.7±2.0%       | S-81237SGY-X | S-81237SGUP-DQE-X | S-81237SG-QE-X |
| 4.0±2.0%       | S-81240SGY-X | S-81240SGUP-DQJ-X | S-81240SG-QJ-X |
| 4.2±2.0%       |              |                   | S-81242SG-IB-X |
| 4.5±2.0%       | S-81245SGY-X | S-81245SGUP-DQ5-X | S-81245SG-Q5-X |
| 4.6±2.0%       | S-81246SGY-X | S-81246SGUP-DQM-X | S-81246SG-QM-X |
| 4.7±2.0%       |              |                   | S-81247SG-IE-X |
| 5.0±2.0%       | S-81250SGY-X | S-81250SGUP-DQD-X | S-81250SG-QD-X |
| 5.2±2.0%       | S-81252SGY-X | S-81252SGUP-DQL-X | S-81252SG-QL-X |
| 5.3±2.0%       |              | S-81253SGUP-DIJ-X |                |
| 5.4±2.0%       |              | S-81254SGUP-DIK-X |                |
| 5.5±2.0%       |              | S-81255SGUP-DIL-X |                |
| 5.6±2.0%       |              | S-81256SGUP-DIM-X |                |

\*1 In the TO-92 package, "x" differs depending upon the packaging form:

B : Loose  
T, Z : Tape

\*2 In the SOT package, "x" differs depending upon the packaging form (in the SOT-23-5 package, on-tape packed products only):

S : Stick  
T : Tape (T1 and T2 are available depending upon the direction of the IC)

### ■ Absolute Maximum Ratings

Table 2

(Unless otherwise specified: Ta=25°C)

| Parameter             | Symbol           | Conditions              | Ratings                                      | Unit |
|-----------------------|------------------|-------------------------|----------------------------------------------|------|
| Input voltage         | V <sub>IN</sub>  | V <sub>OUT</sub> ≤2.6 V | 12                                           | V    |
|                       |                  | V <sub>OUT</sub> ≥2.7 V | 18                                           |      |
| Output voltage        | V <sub>OUT</sub> |                         | V <sub>IN</sub> +0.3 to V <sub>SS</sub> -0.3 | V    |
| Output current        | I <sub>OUT</sub> |                         | 100                                          | mA   |
| Power dissipation     | P <sub>D</sub>   | TO-92                   | 400                                          | mW   |
|                       |                  | SOT-89-3                | 500                                          |      |
|                       |                  | SOT-23-5                | 150                                          |      |
| Operating temperature | T <sub>opr</sub> |                         | -40 to +85                                   | °C   |
| Storage temperature   | T <sub>stg</sub> |                         | -40 to +125                                  | °C   |

**Caution:** Keep static electricity to a minimum.

■ **Electrical Characteristics**

**1. S-81211SGY-X, S-81211SGUP-DQA-X, S-81211SG-QA-X (1.1-V output type)**

**Table 3**

(Unless otherwise specified: Ta=25°C)

| Parameter                                       | Symbol                              | Conditions                                                           | Min.  | Typ.   | Max.  | Unit  | Test cir. |
|-------------------------------------------------|-------------------------------------|----------------------------------------------------------------------|-------|--------|-------|-------|-----------|
| Output voltage                                  | V <sub>OUT</sub>                    | V <sub>IN</sub> =1.5 V, I <sub>OUT</sub> =0.5 mA                     | 1.073 | 1.100  | 1.127 | V     | 1         |
| I/O voltage difference                          | V <sub>dif</sub>                    | I <sub>OUT</sub> =0.5 mA                                             | —     | 0.05   | 0.2   | V     | 1         |
| Line regulation 1                               | ΔV <sub>OUT1</sub>                  | V <sub>IN</sub> =1.5 to 10 V<br>I <sub>OUT</sub> =0.5 mA             | —     | 10     | 50    | mV    | 1         |
| Line regulation 2                               | ΔV <sub>OUT2</sub>                  | V <sub>IN</sub> =1.5 to 10 V<br>I <sub>OUT</sub> =10 μA              | —     | 10     | 77    | mV    | 1         |
| Load regulation                                 | ΔV <sub>OUT3</sub>                  | V <sub>IN</sub> =1.5 V<br>I <sub>OUT</sub> =10 μA to 0.5 mA          | —     | 10     | 100   | mV    | 1         |
| Current consumption                             | I <sub>SS</sub>                     | V <sub>IN</sub> =1.5 V, Unloaded                                     | —     | 1.2    | 2.5   | μA    | 2         |
| Input voltage                                   | V <sub>IN</sub>                     |                                                                      | —     | —      | 10    | V     | —         |
| Temperature characteristic of ΔV <sub>OUT</sub> | $\frac{\Delta V_{OUT}}{\Delta T_a}$ | V <sub>IN</sub> =1.5 V, I <sub>OUT</sub> =0.5 mA<br>Ta=-40°C to 85°C | —     | ±0.138 | —     | mV/°C | —         |

**2. S-81215SGY-X, S-81215SGUP-DQK-X, S-81215SG-QK-X (1.5-V output type)**

**Table 4**

(Unless otherwise specified: Ta=25°C)

| Parameter                                       | Symbol                              | Conditions                                                           | Min.  | Typ.   | Max.  | Unit  | Test cir. |
|-------------------------------------------------|-------------------------------------|----------------------------------------------------------------------|-------|--------|-------|-------|-----------|
| Output voltage                                  | V <sub>OUT</sub>                    | V <sub>IN</sub> =3.5 V, I <sub>OUT</sub> =0.5 mA                     | 1.464 | 1.500  | 1.536 | V     | 1         |
| I/O voltage difference                          | V <sub>dif</sub>                    | I <sub>OUT</sub> =0.5 mA                                             | —     | 0.03   | 0.18  | V     | 1         |
| Line regulation 1                               | ΔV <sub>OUT1</sub>                  | V <sub>IN</sub> =2.5 to 10 V<br>I <sub>OUT</sub> =0.5 mA             | —     | 7      | 39    | mV    | 1         |
| Line regulation 2                               | ΔV <sub>OUT2</sub>                  | V <sub>IN</sub> =2.5 to 10 V<br>I <sub>OUT</sub> =1 μA               | —     | 7      | 105   | mV    | 1         |
| Load regulation                                 | ΔV <sub>OUT3</sub>                  | V <sub>IN</sub> =3.5 V<br>I <sub>OUT</sub> =1 μA to 10 mA            | —     | 80     | 120   | mV    | 1         |
| Current consumption                             | I <sub>SS</sub>                     | V <sub>IN</sub> =3.5 V, Unloaded                                     | —     | 1.2    | 2.5   | μA    | 2         |
| Input voltage                                   | V <sub>IN</sub>                     |                                                                      | —     | —      | 10    | V     | —         |
| Temperature characteristic of ΔV <sub>OUT</sub> | $\frac{\Delta V_{OUT}}{\Delta T_a}$ | V <sub>IN</sub> =3.5 V, I <sub>OUT</sub> =0.5 mA<br>Ta=-40°C to 85°C | —     | ±0.188 | —     | mV/°C | —         |

**3. S-81217SG-QQ-X (1.7-V output type)**

**Table 5**

(Unless otherwise specified: Ta=25°C)

| Parameter                                       | Symbol                              | Conditions                                                          | Min.  | Typ.   | Max.  | Unit  | Test cir. |
|-------------------------------------------------|-------------------------------------|---------------------------------------------------------------------|-------|--------|-------|-------|-----------|
| Output voltage                                  | V <sub>OUT</sub>                    | V <sub>IN</sub> =3.7 V, I <sub>OUT</sub> =10 mA                     | 1.659 | 1.700  | 1.741 | V     | 1         |
| I/O voltage difference                          | V <sub>dif</sub>                    | I <sub>OUT</sub> =10 mA                                             | —     | 0.77   | 1.63  | V     | 1         |
| Line regulation 1                               | ΔV <sub>OUT1</sub>                  | V <sub>IN</sub> =2.7 to 10 V<br>I <sub>OUT</sub> =1 mA              | —     | 8      | 43    | mV    | 1         |
| Line regulation 2                               | ΔV <sub>OUT2</sub>                  | V <sub>IN</sub> =2.7 to 10 V<br>I <sub>OUT</sub> =1 μA              | —     | 8      | 119   | mV    | 1         |
| Load regulation                                 | ΔV <sub>OUT3</sub>                  | V <sub>IN</sub> =3.7 V<br>I <sub>OUT</sub> =1 μA to 10 mA           | —     | 80     | 120   | mV    | 1         |
| Current consumption                             | I <sub>SS</sub>                     | V <sub>IN</sub> =3.7 V, Unloaded                                    | —     | 1.2    | 2.5   | μA    | 2         |
| Input voltage                                   | V <sub>IN</sub>                     |                                                                     | —     | —      | 10    | V     | —         |
| Temperature characteristic of ΔV <sub>OUT</sub> | $\frac{\Delta V_{OUT}}{\Delta T_a}$ | V <sub>IN</sub> =3.7 V, I <sub>OUT</sub> =10 mA<br>Ta=-40°C to 85°C | —     | ±0.213 | —     | mV/°C | —         |

# HIGH PRECISION VOLTAGE REGULATOR

## S-812XXSG Series

### 4. S-81218SG-QR-X (1.8-V output type)

Table 6

(Unless otherwise specified: Ta=25°C)

| Parameter                                       | Symbol                              | Conditions                                                          | Min.  | Typ.   | Max.  | Unit  | Test cir. |
|-------------------------------------------------|-------------------------------------|---------------------------------------------------------------------|-------|--------|-------|-------|-----------|
| Output voltage                                  | V <sub>OUT</sub>                    | V <sub>IN</sub> =3.8 V, I <sub>OUT</sub> =10 mA                     | 1.756 | 1.800  | 1.843 | V     | 1         |
| I/O voltage difference                          | V <sub>dif</sub>                    | I <sub>OUT</sub> =10 mA                                             | —     | 0.72   | 1.55  | V     | 1         |
| Line regulation 1                               | ΔV <sub>OUT1</sub>                  | V <sub>IN</sub> =2.8 to 10 V<br>I <sub>OUT</sub> =1 mA              | —     | 8      | 45    | mV    | 1         |
| Line regulation 2                               | ΔV <sub>OUT2</sub>                  | V <sub>IN</sub> =2.8 to 10 V<br>I <sub>OUT</sub> =1 μA              | —     | 8      | 126   | mV    | 1         |
| Load regulation                                 | ΔV <sub>OUT3</sub>                  | V <sub>IN</sub> =3.8 V<br>I <sub>OUT</sub> =1 μA to 10 mA           | —     | 80     | 120   | mV    | 1         |
| Current consumption                             | I <sub>SS</sub>                     | V <sub>IN</sub> =3.8 V, Unloaded                                    | —     | 1.2    | 2.5   | μA    | 2         |
| Input voltage                                   | V <sub>IN</sub>                     |                                                                     | —     | —      | 10    | V     | —         |
| Temperature characteristic of ΔV <sub>OUT</sub> | $\frac{\Delta V_{OUT}}{\Delta T_a}$ | V <sub>IN</sub> =3.8 V, I <sub>OUT</sub> =10 mA<br>Ta=-40°C to 85°C | —     | ±0.225 | —     | mV/°C | —         |

### 5. S-81220SGY-X, S-81220SGUP-DQS-X, S-81220SG-QS-X (2.0-V output type)

Table 7

(Unless otherwise specified: Ta=25°C)

| Parameter                                       | Symbol                              | Conditions                                                          | Min.  | Typ.   | Max.  | Unit  | Test cir. |
|-------------------------------------------------|-------------------------------------|---------------------------------------------------------------------|-------|--------|-------|-------|-----------|
| Output voltage                                  | V <sub>OUT</sub>                    | V <sub>IN</sub> =4.0 V, I <sub>OUT</sub> =10 mA                     | 1.592 | 2.000  | 2.048 | V     | 1         |
| I/O voltage difference                          | V <sub>dif</sub>                    | I <sub>OUT</sub> =10 mA                                             | —     | 0.63   | 1.39  | V     | 1         |
| Line regulation 1                               | ΔV <sub>OUT1</sub>                  | V <sub>IN</sub> =3.0 to 10 V<br>I <sub>OUT</sub> =1 mA              | —     | 8      | 48    | mV    | 1         |
| Line regulation 2                               | ΔV <sub>OUT2</sub>                  | V <sub>IN</sub> =3.0 to 10 V<br>I <sub>OUT</sub> =1 μA              | —     | 8      | 140   | mV    | 1         |
| Load regulation                                 | ΔV <sub>OUT3</sub>                  | V <sub>IN</sub> =4.0 V<br>I <sub>OUT</sub> =1 μA to 10 mA           | —     | 80     | 120   | mV    | 1         |
| Current consumption                             | I <sub>SS</sub>                     | V <sub>IN</sub> =4.0 V, Unloaded                                    | —     | 1.2    | 2.5   | μA    | 2         |
| Input voltage                                   | V <sub>IN</sub>                     |                                                                     | —     | —      | 10    | V     | —         |
| Temperature characteristic of ΔV <sub>OUT</sub> | $\frac{\Delta V_{OUT}}{\Delta T_a}$ | V <sub>IN</sub> =4.0 V, I <sub>OUT</sub> =10 mA<br>Ta=-40°C to 85°C | —     | ±0.250 | —     | mV/°C | —         |

### 6. S-81221SGUP-DQU-X (2.1-V output type)

Table 8

(Unless otherwise specified: Ta=25°C)

| Parameter                                       | Symbol                              | Conditions                                                          | Min.  | Typ.   | Max.  | Unit  | Test cir. |
|-------------------------------------------------|-------------------------------------|---------------------------------------------------------------------|-------|--------|-------|-------|-----------|
| Output voltage                                  | V <sub>OUT</sub>                    | V <sub>IN</sub> =4.1 V, I <sub>OUT</sub> =10 mA                     | 2.049 | 2.100  | 2.151 | V     | 1         |
| I/O voltage difference                          | V <sub>dif</sub>                    | I <sub>OUT</sub> =10 mA                                             | —     | 0.59   | 1.32  | V     | 1         |
| Line regulation 1                               | ΔV <sub>OUT1</sub>                  | V <sub>IN</sub> =3.1 to 10 V<br>I <sub>OUT</sub> =1 mA              | —     | 9      | 50    | mV    | 1         |
| Line regulation 2                               | ΔV <sub>OUT2</sub>                  | V <sub>IN</sub> =3.1 to 10 V<br>I <sub>OUT</sub> =1 μA              | —     | 9      | 147   | mV    | 1         |
| Load regulation                                 | ΔV <sub>OUT3</sub>                  | V <sub>IN</sub> =4.1 V<br>I <sub>OUT</sub> =1 μA to 10 mA           | —     | 80     | 120   | mV    | 1         |
| Current consumption                             | I <sub>SS</sub>                     | V <sub>IN</sub> =4.1 V, Unloaded                                    | —     | 1.2    | 2.5   | μA    | 2         |
| Input voltage                                   | V <sub>IN</sub>                     |                                                                     | —     | —      | 10    | V     | —         |
| Temperature characteristic of ΔV <sub>OUT</sub> | $\frac{\Delta V_{OUT}}{\Delta T_a}$ | V <sub>IN</sub> =4.1 V, I <sub>OUT</sub> =10 mA<br>Ta=-40°C to 85°C | —     | ±0.263 | —     | mV/°C | —         |

**7. S-81223SGY-X, S-81223SG-QW-X (2.3-V output type)**

**Table 9**

(Unless otherwise specified: Ta=25°C)

| Parameter                                       | Symbol                              | Conditions                                                              | Min.  | Typ.   | Max.  | Unit  | Test cir. |
|-------------------------------------------------|-------------------------------------|-------------------------------------------------------------------------|-------|--------|-------|-------|-----------|
| Output voltage                                  | V <sub>OUT</sub>                    | V <sub>IN</sub> = 4.3 V, I <sub>OUT</sub> = 10 mA                       | 2.244 | 2.300  | 2.356 | V     | 1         |
| I/O voltage difference                          | V <sub>dif</sub>                    | I <sub>OUT</sub> = 10 mA                                                | —     | 0.53   | 1.20  | V     | 1         |
| Line regulation 1                               | ΔV <sub>OUT1</sub>                  | V <sub>IN</sub> = 3.3 to 10 V<br>I <sub>OUT</sub> = 1 mA                | —     | 9      | 54    | mV    | 1         |
| Line regulation 2                               | ΔV <sub>OUT2</sub>                  | V <sub>IN</sub> = 3.3 to 10 V<br>I <sub>OUT</sub> = 1 μA                | —     | 9      | 161   | mV    | 1         |
| Load regulation                                 | ΔV <sub>OUT3</sub>                  | V <sub>IN</sub> = 4.3 V<br>I <sub>OUT</sub> = 1 μA to 10 mA             | —     | 80     | 120   | mV    | 1         |
| Current consumption                             | I <sub>SS</sub>                     | V <sub>IN</sub> = 4.3 V, Unloaded                                       | —     | 1.2    | 2.5   | μA    | 2         |
| Input voltage                                   | V <sub>IN</sub>                     |                                                                         | —     | —      | 10    | V     | —         |
| Temperature characteristic of ΔV <sub>OUT</sub> | $\frac{\Delta V_{OUT}}{\Delta T_a}$ | V <sub>IN</sub> = 4.3 V, I <sub>OUT</sub> = 10 mA<br>Ta = -40°C to 85°C | —     | ±0.288 | —     | mV/°C | —         |

**8. S-81224SGY-X, S-81224SGUP-DQX-X, S-81224SG-QX-X (2.4-V output type)**

**Table 10**

(Unless otherwise specified: Ta=25°C)

| Parameter                                       | Symbol                              | Conditions                                                              | Min.  | Typ.   | Max.  | Unit  | Test cir. |
|-------------------------------------------------|-------------------------------------|-------------------------------------------------------------------------|-------|--------|-------|-------|-----------|
| Output voltage                                  | V <sub>OUT</sub>                    | V <sub>IN</sub> = 4.4 V, I <sub>OUT</sub> = 10 mA                       | 2.342 | 2.400  | 2.458 | V     | 1         |
| I/O voltage difference                          | V <sub>dif</sub>                    | I <sub>OUT</sub> = 10 mA                                                | —     | 0.49   | 1.15  | V     | 1         |
| Line regulation 1                               | ΔV <sub>OUT1</sub>                  | V <sub>IN</sub> = 3.4 to 10 V<br>I <sub>OUT</sub> = 1 mA                | —     | 10     | 55    | mV    | 1         |
| Line regulation 2                               | ΔV <sub>OUT2</sub>                  | V <sub>IN</sub> = 3.4 to 10 V<br>I <sub>OUT</sub> = 1 μA                | —     | 10     | 168   | mV    | 1         |
| Load regulation                                 | ΔV <sub>OUT3</sub>                  | V <sub>IN</sub> = 4.4 V<br>I <sub>OUT</sub> = 1 μA to 10 mA             | —     | 80     | 120   | mV    | 1         |
| Current consumption                             | I <sub>SS</sub>                     | V <sub>IN</sub> = 4.4 V, Unloaded                                       | —     | 1.2    | 2.5   | μA    | 2         |
| Input voltage                                   | V <sub>IN</sub>                     |                                                                         | —     | —      | 10    | V     | —         |
| Temperature characteristic of ΔV <sub>OUT</sub> | $\frac{\Delta V_{OUT}}{\Delta T_a}$ | V <sub>IN</sub> = 4.4 V, I <sub>OUT</sub> = 10 mA<br>Ta = -40°C to 85°C | —     | ±0.300 | —     | mV/°C | —         |

**9. S-81225SGY-X, S-81225SGUP-DQH-X, S-81225SG-QH-X (2.5-V output type)**

**Table 11**

(Unless otherwise specified: Ta=25°C)

| Parameter                                       | Symbol                              | Conditions                                                              | Min.  | Typ.   | Max.  | Unit  | Test cir. |
|-------------------------------------------------|-------------------------------------|-------------------------------------------------------------------------|-------|--------|-------|-------|-----------|
| Output voltage                                  | V <sub>OUT</sub>                    | V <sub>IN</sub> = 4.5 V, I <sub>OUT</sub> = 10 mA                       | 2.440 | 2.500  | 2.560 | V     | 1         |
| I/O voltage difference                          | V <sub>dif</sub>                    | I <sub>OUT</sub> = 10 mA                                                | —     | 0.59   | 1.32  | V     | 1         |
| Line regulation 1                               | ΔV <sub>OUT1</sub>                  | V <sub>IN</sub> = 3.5 to 10 V<br>I <sub>OUT</sub> = 1 mA                | —     | 10     | 57    | mV    | 1         |
| Line regulation 2                               | ΔV <sub>OUT2</sub>                  | V <sub>IN</sub> = 3.5 to 10 V<br>I <sub>OUT</sub> = 1 μA                | —     | 10     | 175   | mV    | 1         |
| Load regulation                                 | ΔV <sub>OUT3</sub>                  | V <sub>IN</sub> = 4.5 V<br>I <sub>OUT</sub> = 1 μA to 10 mA             | —     | 80     | 120   | mV    | 1         |
| Current consumption                             | I <sub>SS</sub>                     | V <sub>IN</sub> = 4.5 V, Unloaded                                       | —     | 1.2    | 2.5   | μA    | 2         |
| Input voltage                                   | V <sub>IN</sub>                     |                                                                         | —     | —      | 10    | V     | —         |
| Temperature characteristic of ΔV <sub>OUT</sub> | $\frac{\Delta V_{OUT}}{\Delta T_a}$ | V <sub>IN</sub> = 4.5 V, I <sub>OUT</sub> = 10 mA<br>Ta = -40°C to 85°C | —     | ±0.313 | —     | mV/°C | —         |

# HIGH-PRECISION VOLTAGE REGULATOR

## S-812XXSG Series

### 10. S-81227SGUP-DQZ-X (2.7-V output type)

Table 12

(Unless otherwise specified: Ta=25°C)

| Parameter                                       | Symbol                              | Conditions                                                           | Min.  | Typ.   | Max.  | Unit  | Test cir. |
|-------------------------------------------------|-------------------------------------|----------------------------------------------------------------------|-------|--------|-------|-------|-----------|
| Output voltage                                  | V <sub>OUT</sub>                    | V <sub>IN</sub> =4.7 V, I <sub>OUT</sub> =10 mA                      | 2.646 | 2.700  | 2.754 | V     | 1         |
| I/O voltage difference                          | V <sub>dif</sub>                    | I <sub>OUT</sub> =10 mA                                              | —     | 0.52   | 1.20  | V     | 1         |
| Line regulation 1                               | ΔV <sub>OUT1</sub>                  | V <sub>IN</sub> =3.7 to 16 V<br>I <sub>OUT</sub> =1 mA               | —     | 36     | 72    | mV    | 1         |
| Line regulation 2                               | ΔV <sub>OUT2</sub>                  | V <sub>IN</sub> =3.7 to 16 V<br>I <sub>OUT</sub> =1 μA               | —     | 36     | 189   | mV    | 1         |
| Load regulation                                 | ΔV <sub>OUT3</sub>                  | V <sub>IN</sub> =4.7 V<br>I <sub>OUT</sub> =1 μA to 20 mA            | —     | 80     | 120   | mV    | 1         |
| Current consumption                             | I <sub>SS</sub>                     | V <sub>IN</sub> =4.7 V, Unloaded                                     | —     | 1.2    | 2.5   | μA    | 2         |
| Input voltage                                   | V <sub>IN</sub>                     |                                                                      | —     | —      | 16    | V     | —         |
| Temperature characteristic of ΔV <sub>OUT</sub> | $\frac{\Delta V_{OUT}}{\Delta T_a}$ | V <sub>IN</sub> =4.7 V, I <sub>OUT</sub> = 10 mA<br>Ta=-40°C to 85°C | —     | ±0.338 | —     | mV/°C | —         |

### 11. S-81230SGY-X, S-81230SGUP-DQB-X, S-81230SG-QB-X (3.0-V output type)

Table 13

(Unless otherwise specified: Ta=25°C)

| Parameter                                       | Symbol                              | Conditions                                                           | Min.  | Typ.   | Max.  | Unit  | Test cir. |
|-------------------------------------------------|-------------------------------------|----------------------------------------------------------------------|-------|--------|-------|-------|-----------|
| Output voltage                                  | V <sub>OUT</sub>                    | V <sub>IN</sub> =5.0 V, I <sub>OUT</sub> =10 mA                      | 2.940 | 3.000  | 3.060 | V     | 1         |
| I/O voltage difference                          | V <sub>dif</sub>                    | I <sub>OUT</sub> =10 mA                                              | —     | 0.44   | 1.04  | V     | 1         |
| Line regulation 1                               | ΔV <sub>OUT1</sub>                  | V <sub>IN</sub> =4.0 to 16 V<br>I <sub>OUT</sub> =1 mA               | —     | 39     | 78    | mV    | 1         |
| Line regulation 2                               | ΔV <sub>OUT2</sub>                  | V <sub>IN</sub> =4.0 to 16 V<br>I <sub>OUT</sub> =1 μA               | —     | 39     | 210   | mV    | 1         |
| Load regulation                                 | ΔV <sub>OUT3</sub>                  | V <sub>IN</sub> =5 V<br>I <sub>OUT</sub> =1 μA to 20 mA              | —     | 60     | 100   | mV    | 1         |
| Current consumption                             | I <sub>SS</sub>                     | V <sub>IN</sub> =5.0 V, Unloaded                                     | —     | 1.2    | 2.5   | μA    | 2         |
| Input voltage                                   | V <sub>IN</sub>                     |                                                                      | —     | —      | 16    | V     | —         |
| Temperature characteristic of ΔV <sub>OUT</sub> | $\frac{\Delta V_{OUT}}{\Delta T_a}$ | V <sub>IN</sub> =5.0 V, I <sub>OUT</sub> = 10 mA<br>Ta=-40°C to 85°C | —     | ±0.375 | —     | mV/°C | —         |

### 12. S-81233SGY-X, S-81233SGUP-DQF-X, S-81233SG-QF-X (3.3-V output type)

Table 14

(Unless otherwise specified: Ta=25°C)

| Parameter                                       | Symbol                              | Conditions                                                           | Min.  | Typ.   | Max.  | Unit  | Test cir. |
|-------------------------------------------------|-------------------------------------|----------------------------------------------------------------------|-------|--------|-------|-------|-----------|
| Output voltage                                  | V <sub>OUT</sub>                    | V <sub>IN</sub> =5.3 V, I <sub>OUT</sub> =10 mA                      | 3.234 | 3.300  | 3.366 | V     | 1         |
| I/O voltage difference                          | V <sub>dif</sub>                    | I <sub>OUT</sub> =10 mA                                              | —     | 0.37   | 0.91  | V     | 1         |
| Line regulation 1                               | ΔV <sub>OUT1</sub>                  | V <sub>IN</sub> =4.3 to 16 V<br>I <sub>OUT</sub> =1 mA               | —     | 42     | 84    | mV    | 1         |
| Line regulation 2                               | ΔV <sub>OUT2</sub>                  | V <sub>IN</sub> =4.3 to 16 V<br>I <sub>OUT</sub> =1 μA               | —     | 42     | 231   | mV    | 1         |
| Load regulation                                 | ΔV <sub>OUT3</sub>                  | V <sub>IN</sub> =5.3 V<br>I <sub>OUT</sub> =1 μA to 20 mA            | —     | 60     | 100   | mV    | 1         |
| Current consumption                             | I <sub>SS</sub>                     | V <sub>IN</sub> =5.3 V, Unloaded                                     | —     | 1.2    | 2.5   | μA    | 2         |
| Input voltage                                   | V <sub>IN</sub>                     |                                                                      | —     | —      | 16    | V     | —         |
| Temperature characteristic of ΔV <sub>OUT</sub> | $\frac{\Delta V_{OUT}}{\Delta T_a}$ | V <sub>IN</sub> =5.3 V, I <sub>OUT</sub> = 10 mA<br>Ta=-40°C to 85°C | —     | ±0.413 | —     | mV/°C | —         |

**13. S-81235SGY-X, S-81235SGUP-DQI-X, S-81235SG-QI-X (3.5-V output type)**

**Table 15**

(Unless otherwise specified: Ta=25°C)

| Parameter                                       | Symbol                              | Conditions                                                           | Min.  | Typ.   | Max.  | Unit  | Test cir. |
|-------------------------------------------------|-------------------------------------|----------------------------------------------------------------------|-------|--------|-------|-------|-----------|
| Output voltage                                  | V <sub>OUT</sub>                    | V <sub>IN</sub> =5.5 V, I <sub>OUT</sub> =10 mA                      | 3.430 | 3.500  | 3.570 | V     | 1         |
| I/O voltage difference                          | V <sub>dif</sub>                    | I <sub>OUT</sub> =10 mA                                              | —     | 0.34   | 0.84  | V     | 1         |
| Line regulation 1                               | ΔV <sub>OUT1</sub>                  | V <sub>IN</sub> =4.5 to 16 V<br>I <sub>OUT</sub> =1 mA               | —     | 44     | 88    | mV    | 1         |
| Line regulation 2                               | ΔV <sub>OUT2</sub>                  | V <sub>IN</sub> =4.5 to 16 V<br>I <sub>OUT</sub> =1 μA               | —     | 44     | 245   | mV    | 1         |
| Load regulation                                 | ΔV <sub>OUT3</sub>                  | V <sub>IN</sub> =5.5 V<br>I <sub>OUT</sub> =1 μA to 30 mA            | —     | 60     | 100   | mV    | 1         |
| Current consumption                             | I <sub>SS</sub>                     | V <sub>IN</sub> =5.5 V, Unloaded                                     | —     | 1.2    | 2.5   | μA    | 2         |
| Input voltage                                   | V <sub>IN</sub>                     |                                                                      | —     | —      | 16    | V     | —         |
| Temperature characteristic of ΔV <sub>OUT</sub> | $\frac{\Delta V_{OUT}}{\Delta T_a}$ | V <sub>IN</sub> =5.5 V, I <sub>OUT</sub> = 10 mA<br>Ta=-40°C to 85°C | —     | ±0.438 | —     | mV/°C | —         |

**14. S-81236SGUP-DQ7-X (3.6-V output type)**

**Table 16**

(Unless otherwise specified: Ta=25°C)

| Parameter                                       | Symbol                              | Conditions                                                           | Min.  | Typ.   | Max.  | Unit  | Test cir. |
|-------------------------------------------------|-------------------------------------|----------------------------------------------------------------------|-------|--------|-------|-------|-----------|
| Output voltage                                  | V <sub>OUT</sub>                    | V <sub>IN</sub> =5.6 V, I <sub>OUT</sub> =10 mA                      | 3.528 | 3.600  | 3.672 | V     | 1         |
| I/O voltage difference                          | V <sub>dif</sub>                    | I <sub>OUT</sub> =16 mA                                              | —     | 0.32   | 0.81  | V     | 1         |
| Line regulation 1                               | ΔV <sub>OUT1</sub>                  | V <sub>IN</sub> =4.6 to 16 V<br>I <sub>OUT</sub> =1 mA               | —     | 45     | 90    | mV    | 1         |
| Line regulation 2                               | ΔV <sub>OUT2</sub>                  | V <sub>IN</sub> =4.6 to 16 V<br>I <sub>OUT</sub> =1 μA               | —     | 45     | 252   | mV    | 1         |
| Load regulation                                 | ΔV <sub>OUT3</sub>                  | V <sub>IN</sub> =5.6 V<br>I <sub>OUT</sub> =1 μA to 30 mA            | —     | 60     | 100   | mV    | 1         |
| Current consumption                             | I <sub>SS</sub>                     | V <sub>IN</sub> =5.6 V, Unloaded                                     | —     | 1.2    | 2.5   | μA    | 2         |
| Input voltage                                   | V <sub>IN</sub>                     |                                                                      | —     | —      | 16    | V     | —         |
| Temperature characteristic of ΔV <sub>OUT</sub> | $\frac{\Delta V_{OUT}}{\Delta T_a}$ | V <sub>IN</sub> =5.6 V, I <sub>OUT</sub> = 10 mA<br>Ta=-40°C to 85°C | —     | ±0.450 | —     | mV/°C | —         |

**15. S-81237SGY-X, S-81237SGUP-DQE-X, S-81237SG-QE-X (3.7-V output type)**

**Table 17**

(Unless otherwise specified: Ta=25°C)

| Parameter                                       | Symbol                              | Conditions                                                           | Min.  | Typ.   | Max.  | Unit  | Test cir. |
|-------------------------------------------------|-------------------------------------|----------------------------------------------------------------------|-------|--------|-------|-------|-----------|
| Output voltage                                  | V <sub>OUT</sub>                    | V <sub>IN</sub> =5.7 V, I <sub>OUT</sub> =10 mA                      | 3.626 | 3.700  | 3.774 | V     | 1         |
| I/O voltage difference                          | V <sub>dif</sub>                    | I <sub>OUT</sub> =10 mA                                              | —     | 0.31   | 0.78  | V     | 1         |
| Line regulation 1                               | ΔV <sub>OUT1</sub>                  | V <sub>IN</sub> =4.7 to 16 V<br>I <sub>OUT</sub> =1 mA               | —     | 46     | 92    | mV    | 1         |
| Line regulation 2                               | ΔV <sub>OUT2</sub>                  | V <sub>IN</sub> =4.7 to 16 V<br>I <sub>OUT</sub> =1 μA               | —     | 46     | 259   | mV    | 1         |
| Load regulation                                 | ΔV <sub>OUT3</sub>                  | V <sub>IN</sub> =5.7 V<br>I <sub>OUT</sub> =1 μA to 30 mA            | —     | 60     | 100   | mV    | 1         |
| Current consumption                             | I <sub>SS</sub>                     | V <sub>IN</sub> =5.7 V, Unloaded                                     | —     | 1.2    | 2.5   | μA    | 2         |
| Input voltage                                   | V <sub>IN</sub>                     |                                                                      | —     | —      | 16    | V     | —         |
| Temperature characteristic of ΔV <sub>OUT</sub> | $\frac{\Delta V_{OUT}}{\Delta T_a}$ | V <sub>IN</sub> =5.7 V, I <sub>OUT</sub> = 10 mA<br>Ta=-40°C to 85°C | —     | ±0.463 | —     | mV/°C | —         |



# HIGH-PRECISION VOLTAGE REGULATOR

## S-812XXSG Series

### 16. S-81240SGY-X, S-81240SGUP-DQJ-X, S-81240SG-QJ-X (4.0-V output type)

Table 18

(Unless otherwise specified: Ta=25°C)

| Parameter                                       | Symbol                              | Conditions                                                           | Min.  | Typ.   | Max.  | Unit  | Test cir. |
|-------------------------------------------------|-------------------------------------|----------------------------------------------------------------------|-------|--------|-------|-------|-----------|
| Output voltage                                  | V <sub>OUT</sub>                    | V <sub>IN</sub> =6.0 V, I <sub>OUT</sub> =10 mA                      | 3.920 | 4.000  | 4.080 | V     | 1         |
| I/O voltage difference                          | V <sub>dif</sub>                    | I <sub>OUT</sub> =10 mA                                              | —     | 0.27   | 0.70  | V     | 1         |
| Line regulation 1                               | ΔV <sub>OUT1</sub>                  | V <sub>IN</sub> =5.0 to 16 V<br>I <sub>OUT</sub> =1 mA               | —     | 48     | 96    | mV    | 1         |
| Line regulation 2                               | ΔV <sub>OUT2</sub>                  | V <sub>IN</sub> =5.0 to 16 V<br>I <sub>OUT</sub> =1 μA               | —     | 48     | 280   | mV    | 1         |
| Load regulation                                 | ΔV <sub>OUT3</sub>                  | V <sub>IN</sub> =6.0 V<br>I <sub>OUT</sub> =1 μA to 30 mA            | —     | 50     | 90    | mV    | 1         |
| Current consumption                             | I <sub>SS</sub>                     | V <sub>IN</sub> =6.0 V, Unloaded                                     | —     | 1.2    | 2.5   | μA    | 2         |
| Input voltage                                   | V <sub>IN</sub>                     |                                                                      | —     | —      | 16    | V     | —         |
| Temperature characteristic of ΔV <sub>OUT</sub> | $\frac{\Delta V_{OUT}}{\Delta T_a}$ | V <sub>IN</sub> =6.0 V, I <sub>OUT</sub> = 10 mA<br>Ta=-40°C to 85°C | —     | ±0.500 | —     | mV/°C | —         |

### 17. S-81242SG-IB-X (4.2-V output type)

Table 19

(Unless otherwise specified: Ta=25°C)

| Parameter                                       | Symbol                              | Conditions                                                           | Min.  | Typ.   | Max.  | Unit  | Test cir. |
|-------------------------------------------------|-------------------------------------|----------------------------------------------------------------------|-------|--------|-------|-------|-----------|
| Output voltage                                  | V <sub>OUT</sub>                    | V <sub>IN</sub> =6.2V, I <sub>OUT</sub> =10 mA                       | 4.116 | 4.200  | 4.284 | V     | 1         |
| I/O voltage difference                          | V <sub>dif</sub>                    | I <sub>OUT</sub> =10 mA                                              | —     | 0.24   | 0.65  | V     | 1         |
| Line regulation 1                               | ΔV <sub>OUT1</sub>                  | V <sub>IN</sub> =5.2 to 16 V<br>I <sub>OUT</sub> =1 mA               | —     | 50     | 100   | mV    | 1         |
| Line regulation 2                               | ΔV <sub>OUT2</sub>                  | V <sub>IN</sub> =5.2 to 16 V<br>I <sub>OUT</sub> =1 μA               | —     | 50     | 294   | mV    | 1         |
| Load regulation                                 | ΔV <sub>OUT3</sub>                  | V <sub>IN</sub> =6.2 V<br>I <sub>OUT</sub> =1 μA to 30 mA            | —     | 50     | 90    | mV    | 1         |
| Current consumption                             | I <sub>SS</sub>                     | V <sub>IN</sub> =6.2 V, Unloaded                                     | —     | 1.2    | 2.5   | μA    | 2         |
| Input voltage                                   | V <sub>IN</sub>                     |                                                                      | —     | —      | 16    | V     | —         |
| Temperature characteristic of ΔV <sub>OUT</sub> | $\frac{\Delta V_{OUT}}{\Delta T_a}$ | V <sub>IN</sub> =6.2 V, I <sub>OUT</sub> = 10 mA<br>Ta=-40°C to 85°C | —     | ±0.525 | —     | mV/°C | —         |

### 18. S-81245SGY-X, S-81245SGUP-DQ5-X, S-81245SG-Q5-X (4.5-V output type)

Table 20

(Unless otherwise specified: Ta=25°C)

| Parameter                                       | Symbol                              | Conditions                                                           | Min.  | Typ.   | Max.  | Unit  | Test cir. |
|-------------------------------------------------|-------------------------------------|----------------------------------------------------------------------|-------|--------|-------|-------|-----------|
| Output voltage                                  | V <sub>OUT</sub>                    | V <sub>IN</sub> =6.5 V, I <sub>OUT</sub> =10 mA                      | 4.410 | 4.500  | 4.590 | V     | 1         |
| I/O voltage difference                          | V <sub>dif</sub>                    | I <sub>OUT</sub> =10 mA                                              | —     | 0.21   | 0.58  | V     | 1         |
| Line regulation 1                               | ΔV <sub>OUT1</sub>                  | V <sub>IN</sub> =5.5 to 16 V<br>I <sub>OUT</sub> =1 mA               | —     | 52     | 104   | mV    | 1         |
| Line regulation 2                               | ΔV <sub>OUT2</sub>                  | V <sub>IN</sub> =5.5 to 16 V<br>I <sub>OUT</sub> =1 μA               | —     | 52     | 315   | mV    | 1         |
| Load regulation                                 | ΔV <sub>OUT3</sub>                  | V <sub>IN</sub> =6.5 V<br>I <sub>OUT</sub> =1 μA to 30 mA            | —     | 50     | 90    | mV    | 1         |
| Current consumption                             | I <sub>SS</sub>                     | V <sub>IN</sub> =6.5 V, Unloaded                                     | —     | 1.2    | 2.5   | μA    | 2         |
| Input voltage                                   | V <sub>IN</sub>                     |                                                                      | —     | —      | 16    | V     | —         |
| Temperature characteristic of ΔV <sub>OUT</sub> | $\frac{\Delta V_{OUT}}{\Delta T_a}$ | V <sub>IN</sub> =6.5 V, I <sub>OUT</sub> = 10 mA<br>Ta=-40°C to 85°C | —     | ±0.563 | —     | mV/°C | —         |

**19. S-81246SGY-X, S-81246SGUP-DQM-X, S-81246SG-QM-X (4.6-V output type)**

**Table 21**

(Unless otherwise specified: Ta=25°C)

| Parameter                                       | Symbol                              | Conditions                                                           | Min.  | Typ.   | Max.  | Unit  | Test cir. |
|-------------------------------------------------|-------------------------------------|----------------------------------------------------------------------|-------|--------|-------|-------|-----------|
| Output voltage                                  | V <sub>OUT</sub>                    | V <sub>IN</sub> =6.6 V, I <sub>OUT</sub> =10 mA                      | 4.508 | 4.600  | 4.692 | V     | 1         |
| I/O voltage difference                          | V <sub>dif</sub>                    | I <sub>OUT</sub> =10 mA                                              | —     | 0.20   | 0.57  | V     | 1         |
| Line regulation 1                               | ΔV <sub>OUT1</sub>                  | V <sub>IN</sub> =5.6 to 16 V<br>I <sub>OUT</sub> =1 mA               | —     | 53     | 105   | mV    | 1         |
| Line regulation 2                               | ΔV <sub>OUT2</sub>                  | V <sub>IN</sub> =5.6 to 16 V<br>I <sub>OUT</sub> =1 μA               | —     | 53     | 322   | mV    | 1         |
| Load regulation                                 | ΔV <sub>OUT3</sub>                  | V <sub>IN</sub> =6.6 V<br>I <sub>OUT</sub> =1 μA to 30 mA            | —     | 50     | 90    | mV    | 1         |
| Current consumption                             | I <sub>SS</sub>                     | V <sub>IN</sub> =6.6 V, Unloaded                                     | —     | 1.2    | 2.5   | μA    | 2         |
| Input voltage                                   | V <sub>IN</sub>                     |                                                                      | —     | —      | 16    | V     | —         |
| Temperature characteristic of ΔV <sub>OUT</sub> | $\frac{\Delta V_{OUT}}{\Delta T_a}$ | V <sub>IN</sub> =6.6 V, I <sub>OUT</sub> = 10 mA<br>Ta=-40°C to 85°C | —     | ±0.575 | —     | mV/°C | —         |

**20. S-81247SG-IE-X (4.7-V output type)**

**Table 22**

(Unless otherwise specified: Ta=25°C)

| Parameter                                       | Symbol                              | Conditions                                                           | Min.  | Typ.   | Max.  | Unit  | Test cir. |
|-------------------------------------------------|-------------------------------------|----------------------------------------------------------------------|-------|--------|-------|-------|-----------|
| Output voltage                                  | V <sub>OUT</sub>                    | V <sub>IN</sub> =6.7 V, I <sub>OUT</sub> =10 mA                      | 4.606 | 4.700  | 4.794 | V     | 1         |
| I/O voltage difference                          | V <sub>dif</sub>                    | I <sub>OUT</sub> =10 mA                                              | —     | 0.19   | 0.55  | V     | 1         |
| Line regulation 1                               | ΔV <sub>OUT1</sub>                  | V <sub>IN</sub> =5.7 to 16 V<br>I <sub>OUT</sub> =1 mA               | —     | 54     | 107   | mV    | 1         |
| Line regulation 2                               | ΔV <sub>OUT2</sub>                  | V <sub>IN</sub> =5.7 to 16 V<br>I <sub>OUT</sub> =1 μA               | —     | 54     | 329   | mV    | 1         |
| Load regulation                                 | ΔV <sub>OUT3</sub>                  | V <sub>IN</sub> =6.7 V<br>I <sub>OUT</sub> =1 μA to 30 mA            | —     | 50     | 90    | mV    | 1         |
| Current consumption                             | I <sub>SS</sub>                     | V <sub>IN</sub> =6.7 V, Unloaded                                     | —     | 1.2    | 2.5   | μA    | 2         |
| Input voltage                                   | V <sub>IN</sub>                     |                                                                      | —     | —      | 16    | V     | —         |
| Temperature characteristic of ΔV <sub>OUT</sub> | $\frac{\Delta V_{OUT}}{\Delta T_a}$ | V <sub>IN</sub> =6.7 V, I <sub>OUT</sub> = 10 mA<br>Ta=-40°C to 85°C | —     | ±0.588 | —     | mV/°C | —         |

**21. S-81250SGY-X, S-81250SGUP-DQD-X, S-81250SG-QD-X (5.0-V output type)**

**Table 23**

(Unless otherwise specified: Ta=25°C)

| Parameter                                       | Symbol                              | Conditions                                                           | Min.  | Typ.   | Max.  | Unit  | Test cir. |
|-------------------------------------------------|-------------------------------------|----------------------------------------------------------------------|-------|--------|-------|-------|-----------|
| Output voltage                                  | V <sub>OUT</sub>                    | V <sub>IN</sub> =7.0 V, I <sub>OUT</sub> =10 mA                      | 4.900 | 5.000  | 5.100 | V     | 1         |
| I/O voltage difference                          | V <sub>dif</sub>                    | I <sub>OUT</sub> =10 mA                                              | —     | 0.16   | 0.50  | V     | 1         |
| Line regulation 1                               | ΔV <sub>OUT1</sub>                  | V <sub>IN</sub> =6.0 to 16 V<br>I <sub>OUT</sub> =1 mA               | —     | 55     | 110   | mV    | 1         |
| Line regulation 2                               | ΔV <sub>OUT2</sub>                  | V <sub>IN</sub> =6.0 to 16 V<br>I <sub>OUT</sub> =1 μA               | —     | 55     | 350   | mV    | 1         |
| Load regulation                                 | ΔV <sub>OUT3</sub>                  | V <sub>IN</sub> =7.0 V<br>I <sub>OUT</sub> =1 μA to 40 mA            | —     | 40     | 80    | mV    | 1         |
| Current consumption                             | I <sub>SS</sub>                     | V <sub>IN</sub> =7.0 V, Unloaded                                     | —     | 1.2    | 2.5   | μA    | 2         |
| Input voltage                                   | V <sub>IN</sub>                     |                                                                      | —     | —      | 16    | V     | —         |
| Temperature characteristic of ΔV <sub>OUT</sub> | $\frac{\Delta V_{OUT}}{\Delta T_a}$ | V <sub>IN</sub> =7.0 V, I <sub>OUT</sub> = 10 mA<br>Ta=-40°C to 85°C | —     | ±0.625 | —     | mV/°C | —         |

# HIGH-PRECISION VOLTAGE REGULATOR

## S-812XXSG Series

### 22. S-81252SGY-X, S-81252SGUP-DQL-X, S-81252SG-QL-X (5.2-V output type)

**Table 24**

(Unless otherwise specified: Ta=25°C)

| Parameter                                       | Symbol                              | Conditions                                                           | Min.  | Typ.   | Max.  | Unit  | Test cir. |
|-------------------------------------------------|-------------------------------------|----------------------------------------------------------------------|-------|--------|-------|-------|-----------|
| Output voltage                                  | V <sub>OUT</sub>                    | V <sub>IN</sub> =7.2 V, I <sub>OUT</sub> =10 mA                      | 5.096 | 5.200  | 5.304 | V     | 1         |
| I/O voltage difference                          | V <sub>dif</sub>                    | I <sub>OUT</sub> =10 mA                                              | —     | 0.15   | 0.47  | V     | 1         |
| Line regulation 1                               | ΔV <sub>OUT1</sub>                  | V <sub>IN</sub> =6.2 to 16 V<br>I <sub>OUT</sub> =1 mA               | —     | 57     | 113   | mV    | 1         |
| Line regulation 2                               | ΔV <sub>OUT2</sub>                  | V <sub>IN</sub> =6.2 to 16 V<br>I <sub>OUT</sub> =1 μA               | —     | 57     | 364   | mV    | 1         |
| Load regulation                                 | ΔV <sub>OUT3</sub>                  | V <sub>IN</sub> =7.2 V<br>I <sub>OUT</sub> =1 μA to 40 mA            | —     | 40     | 80    | mV    | 1         |
| Current consumption                             | I <sub>SS</sub>                     | V <sub>IN</sub> =7.2 V, Unloaded                                     | —     | 1.2    | 2.5   | μA    | 2         |
| Input voltage                                   | V <sub>IN</sub>                     |                                                                      | —     | —      | 16    | V     | —         |
| Temperature characteristic of ΔV <sub>OUT</sub> | $\frac{\Delta V_{OUT}}{\Delta T_a}$ | V <sub>IN</sub> =7.2 V, I <sub>OUT</sub> = 10 mA<br>Ta=-40°C to 85°C | —     | ±0.650 | —     | mV/°C | —         |

### 23. S-81253SGUP-DIJ-X (5.3-V output type)

**Table 25**

(Unless otherwise specified: Ta=25°C)

| Parameter                                       | Symbol                              | Conditions                                                           | Min.  | Typ.   | Max.  | Unit  | Test cir. |
|-------------------------------------------------|-------------------------------------|----------------------------------------------------------------------|-------|--------|-------|-------|-----------|
| Output voltage                                  | V <sub>OUT</sub>                    | V <sub>IN</sub> =7.3 V, I <sub>OUT</sub> =10 mA                      | 5.194 | 5.300  | 5.406 | V     | 1         |
| I/O voltage difference                          | V <sub>dif</sub>                    | I <sub>OUT</sub> =10 mA                                              | —     | 0.14   | 0.45  | V     | 1         |
| Line regulation 1                               | ΔV <sub>OUT1</sub>                  | V <sub>IN</sub> =6.3 to 16 V<br>I <sub>OUT</sub> =1 mA               | —     | 57     | 114   | mV    | 1         |
| Line regulation 2                               | ΔV <sub>OUT2</sub>                  | V <sub>IN</sub> =6.3 to 16 V<br>I <sub>OUT</sub> =1 μA               | —     | 57     | 371   | mV    | 1         |
| Load regulation                                 | ΔV <sub>OUT3</sub>                  | V <sub>IN</sub> =7.3 V<br>I <sub>OUT</sub> =1 μA to 40 mA            | —     | 40     | 80    | mV    | 1         |
| Current consumption                             | I <sub>SS</sub>                     | V <sub>IN</sub> =7.3 V, Unloaded                                     | —     | 1.2    | 2.5   | μA    | 2         |
| Input voltage                                   | V <sub>IN</sub>                     |                                                                      | —     | —      | 16    | V     | —         |
| Temperature characteristic of ΔV <sub>OUT</sub> | $\frac{\Delta V_{OUT}}{\Delta T_a}$ | V <sub>IN</sub> =7.3 V, I <sub>OUT</sub> = 10 mA<br>Ta=-40°C to 85°C | —     | ±0.663 | —     | mV/°C | —         |

### 24. S-81254SGUP-DIK-X (5.4-V output type)

**Table 26**

(Unless otherwise specified: Ta=25°C)

| Parameter                                       | Symbol                              | Conditions                                                           | Min.  | Typ.   | Max.  | Unit  | Test cir. |
|-------------------------------------------------|-------------------------------------|----------------------------------------------------------------------|-------|--------|-------|-------|-----------|
| Output voltage                                  | V <sub>OUT</sub>                    | V <sub>IN</sub> =7.4 V, I <sub>OUT</sub> =10 mA                      | 5.292 | 5.400  | 5.508 | V     | 1         |
| I/O voltage difference                          | V <sub>dif</sub>                    | I <sub>OUT</sub> =10 mA                                              | —     | 0.13   | 0.44  | V     | 1         |
| Line regulation 1                               | ΔV <sub>OUT1</sub>                  | V <sub>IN</sub> =6.4 to 16 V<br>I <sub>OUT</sub> =1 mA               | —     | 58     | 115   | mV    | 1         |
| Line regulation 2                               | ΔV <sub>OUT2</sub>                  | V <sub>IN</sub> =6.4 to 16 V<br>I <sub>OUT</sub> =1 μA               | —     | 58     | 378   | mV    | 1         |
| Load regulation                                 | ΔV <sub>OUT3</sub>                  | V <sub>IN</sub> =7.4 V<br>I <sub>OUT</sub> =1 μA to 40 mA            | —     | 40     | 80    | mV    | 1         |
| Current consumption                             | I <sub>SS</sub>                     | V <sub>IN</sub> =7.4 V, Unloaded                                     | —     | 1.2    | 2.5   | μA    | 2         |
| Input voltage                                   | V <sub>IN</sub>                     |                                                                      | —     | —      | 16    | V     | —         |
| Temperature characteristic of ΔV <sub>OUT</sub> | $\frac{\Delta V_{OUT}}{\Delta T_a}$ | V <sub>IN</sub> =7.4 V, I <sub>OUT</sub> = 10 mA<br>Ta=-40°C to 85°C | —     | ±0.675 | —     | mV/°C | —         |

**25. S-81255SGUP-DIL-X (5.5-V output type)**

**Table 27**

(Unless otherwise specified: Ta=25 C)

| Parameter                                      | Symbol                             | Conditions                                                                                       | Min.  | Typ.        | Max.  | Unit                   | Test cir. |
|------------------------------------------------|------------------------------------|--------------------------------------------------------------------------------------------------|-------|-------------|-------|------------------------|-----------|
| Output voltage                                 | $V_{OUT}$                          | $V_{IN}=7.5\text{ V}$ , $I_{OUT}=10\text{ mA}$                                                   | 5.390 | 5.500       | 5.610 | V                      | 1         |
| I/O voltage difference                         | $V_{dif}$                          | $I_{OUT}=10\text{ mA}$                                                                           | —     | 0.13        | 0.43  | V                      | 1         |
| Line regulation 1                              | $\Delta V_{OUT1}$                  | $V_{IN}=6.5\text{ to }16\text{ V}$<br>$I_{OUT}=1\text{ mA}$                                      | —     | 58          | 116   | mV                     | 1         |
| Line regulation 2                              | $\Delta V_{OUT2}$                  | $V_{IN}=6.5\text{ to }16\text{ V}$<br>$I_{OUT}=1\text{ }\mu\text{A}$                             | —     | 58          | 385   | mV                     | 1         |
| Load regulation                                | $\Delta V_{OUT3}$                  | $V_{IN}=7.5\text{ V}$<br>$I_{OUT}=1\text{ }\mu\text{A to }40\text{ mA}$                          | —     | 40          | 80    | mV                     | 1         |
| Current consumption                            | $I_{SS}$                           | $V_{IN}=7.5\text{ V}$ , Unloaded                                                                 | —     | 1.2         | 2.5   | $\mu\text{A}$          | 2         |
| Input voltage                                  | $V_{IN}$                           |                                                                                                  | —     | —           | 16    | V                      | —         |
| Temperature characteristic of $\Delta V_{OUT}$ | $\frac{\Delta V_{OUT}}{\Delta Ta}$ | $V_{IN}=7.5\text{ V}$ , $I_{OUT}=10\text{ mA}$<br>$Ta=-40^{\circ}\text{C to }85^{\circ}\text{C}$ | —     | $\pm 0.688$ | —     | mV/ $^{\circ}\text{C}$ | —         |

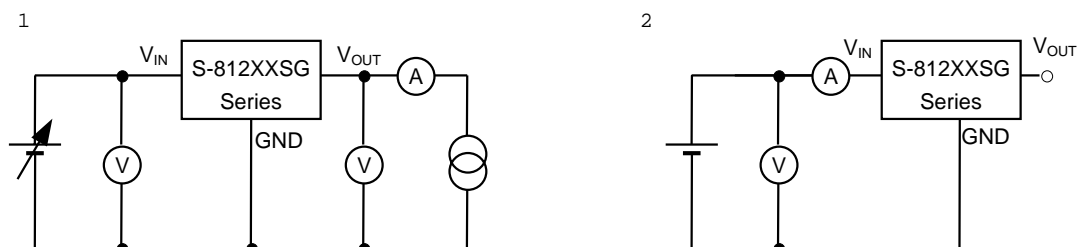
**26. S-81256SGUP-DIM-X (5.6-V output type)**

**Table 28**

(Unless otherwise specified: Ta=25 C)

| Parameter                                      | Symbol                             | Conditions                                                                                       | Min.  | Typ.      | Max.  | Unit                   | Test cir. |
|------------------------------------------------|------------------------------------|--------------------------------------------------------------------------------------------------|-------|-----------|-------|------------------------|-----------|
| Output voltage                                 | $V_{OUT}$                          | $V_{IN}=7.6\text{ V}$ , $I_{OUT}=10\text{ mA}$                                                   | 5.488 | 5.600     | 5.712 | V                      | 1         |
| I/O voltage difference                         | $V_{dif}$                          | $I_{OUT}=10\text{ mA}$                                                                           | —     | 0.12      | 0.42  | V                      | 1         |
| Line regulation 1                              | $\Delta V_{OUT1}$                  | $V_{IN}=6.6\text{ to }16\text{ V}$<br>$I_{OUT}=1\text{ mA}$                                      | —     | 59        | 117   | mV                     | 1         |
| Line regulation 2                              | $\Delta V_{OUT2}$                  | $V_{IN}=6.6\text{ to }16\text{ V}$<br>$I_{OUT}=1\text{ }\mu\text{A}$                             | —     | 59        | 392   | mV                     | 1         |
| Load regulation                                | $\Delta V_{OUT3}$                  | $V_{IN}=7.6\text{ V}$<br>$I_{OUT}=1\text{ }\mu\text{A to }40\text{ mA}$                          | —     | 40        | 80    | mV                     | 1         |
| Current consumption                            | $I_{SS}$                           | $V_{IN}=7.6\text{ V}$ , Unloaded                                                                 | —     | 1.2       | 2.5   | $\mu\text{A}$          | 2         |
| Input voltage                                  | $V_{IN}$                           |                                                                                                  | —     | —         | 16    | V                      | —         |
| Temperature characteristic of $\Delta V_{OUT}$ | $\frac{\Delta V_{OUT}}{\Delta Ta}$ | $V_{IN}=7.6\text{ V}$ , $I_{OUT}=10\text{ mA}$<br>$Ta=-40^{\circ}\text{C to }85^{\circ}\text{C}$ | —     | $\pm 0.7$ | —     | mV/ $^{\circ}\text{C}$ | —         |

■ **Test Circuits**



**Figure 3**

# HIGH-PRECISION VOLTAGE REGULATOR

## S-812XXSG Series

---

### ■ Technical Terms

#### 1 Output voltage ( $V_{OUT}$ )

The precision of output voltage is guaranteed at  $\pm 2.0\%$  or  $\pm 2.4\%$  under the prescribed conditions of input voltage, output voltage, and temperature, which differ with items. If these conditions are varied, output voltage value may change into beyond the scope of precision of output voltage. See electrical characteristics and characteristics data for detail.

#### 2 Line regulations 1 and 2 ( $\Delta V_{OUT1}$ , $\Delta V_{OUT2}$ )

Indicates the input voltage dependencies of output voltage. That is, the values express how the output voltage changes, when input voltage is changed under the condition that output current is fixed.

#### 3 Load regulation ( $\Delta V_{OUT3}$ )

Indicates the output current dependencies of output voltage. That is, the values express how the output voltage changes, when output current is changed under the condition that input voltage is fixed.

#### 4 I/O voltage defference ( $V_{dif}$ )

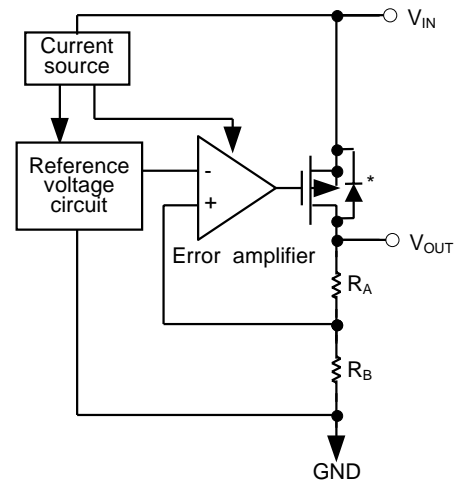
98% of  $V_{OUT}$  is output when the voltage of  $V_{OUT}+V_{dif}$  is applied. When  $V_{dif}$  is small, output keeps a constant voltage in the small side of input voltage and large output current can be obtained.

**NOTE :**  $V_{dif}$  is highly dependent on  $I_{OUT}$ .

■ **Operation**

**1 Basic operation**

Figure 4 shows the block diagram of the S-812XXSG Series. The error amplifier compares a reference voltage  $V_{REF}$  with a part of the output voltage fed back by the feedback resistors  $R_A$  and  $R_B$ . It supplies the control transistor with the gate current, necessary to keep a stable output voltage range not influenced by input voltage or temperature fluctuation.



\* Parasitic diode

**Figure 4 Reference block diagram**

**2 Internal circuit**

**2.1 Reference voltage circuit**

In a voltage regulator, the reference voltage circuit plays a very important role because any change will show up directly at an output.

The S-812XXSG Series has 0.8 V typical stable voltage circuit as a highly stable reference voltage source.

Features:

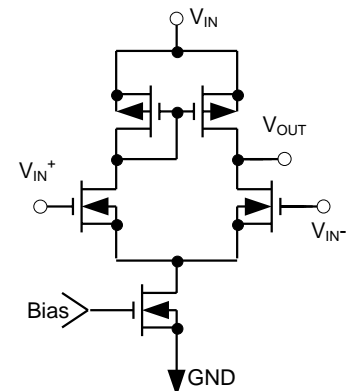
- Low power consumption
- Good temperature characteristic

**2.2 Error amplifier**

The error amplifier consumes very low current because it is a differential amplifier in a stable current circuit.

Features:

- Good matching characteristics
- Wide operating voltage range
- Low offset voltage



**Figure 5 Error amplifier**

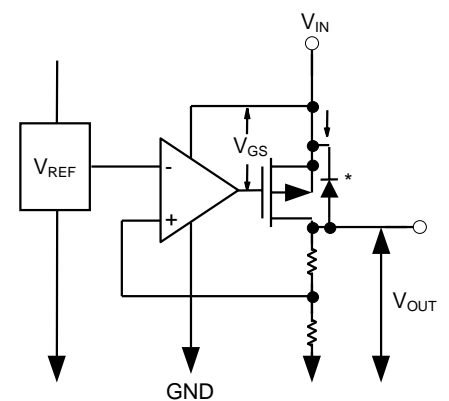
**2.3 Control transistor**

The S-812XXSG Series has a Pch MOS transistor as a current control transistor shown in Figure 6. Therefore an output current  $I_{OUT}$  is expressed by the following formula where is only a small difference between input and output voltages:

$$I_{OUT} = KP \{ 2(V_{GS} - V_{TP})(V_{IN} - V_{OUT}) - (V_{IN} - V_{OUT})^2 \}$$

- \* KP : Conductive coefficient
- $V_{TP}$  : Threshold voltage of a control transistor

Setting KP to the large value results in a voltage regulator with 160 mV typical I/O voltage difference.



\* Parasitic diode

**Figure 6 Control transistor**

**NOTE:** A parasitic diode is generated between  $V_{IN}$  and  $V_{OUT}$ . If the electric potential of  $V_{IN}$  is higher than that of  $V_{OUT}$ , IC may break because of a reverse current. Keep  $V_{OUT}$  less than  $V_{IN} + 0.3$  V.

# HIGH-PRECISION VOLTAGE REGULATOR

## S-812XXSG Series

### 3 Temperature characteristic of output voltage

The temperature characteristic of the output voltage is expressed by the following formula in the range of -40°C to 85°C.

$$\frac{V_{OUT}}{V_{REF}} \times (\pm 0.1) \text{ mV/}^\circ\text{C typ.}$$

\*  $V_{REF}$  is 0.7 V min., 0.8 V typ., 0.9 V max.

## ■ Transient Response

### 1. Line transient response

The overshoot and undershoot are caused in the output voltage if the input voltage fluctuates while the output current is constant. Figure 7 shows the output voltage fluctuation due to input voltage change between 6.0 V and 10 V in square wave. Table 19 shows the parameter dependency when input voltage fluctuates. For reference, Figure 8 describes the measurement circuit.

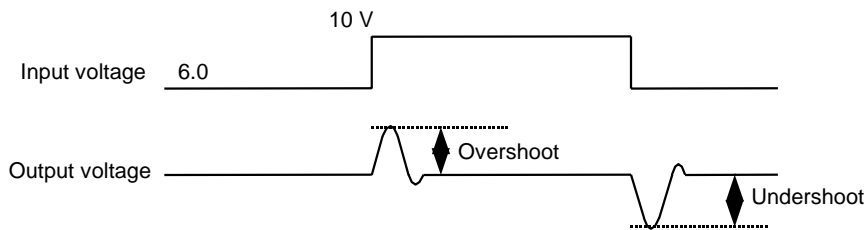


Figure 7 Output voltage fluctuation due to input voltage fluctuation

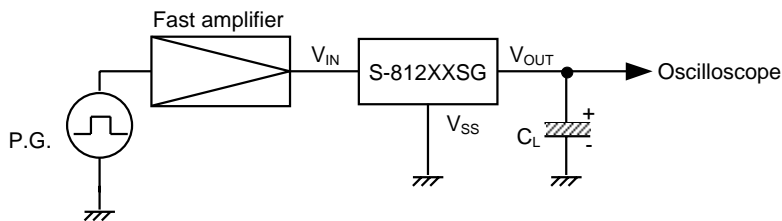


Figure 8 Measuring circuit

Table 29 Parameter dependency due to input voltage fluctuation

| Parameter                                   | Method to decrease overshoot | Method to decrease undershoot |
|---------------------------------------------|------------------------------|-------------------------------|
| Output current $I_{OUT}$                    | Decrease                     | Decrease                      |
| Load capacitance $C_L$                      | Increase                     | Increase                      |
| Input voltage fluctuation $\Delta V_{IN}^*$ | Decrease                     | Decrease                      |
| Temperature $T_a$                           | —                            | High temperature              |

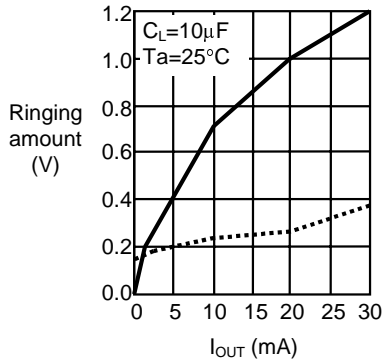
\*  $\Delta V_{IN}$ : High voltage value - low voltage value

For reference, the next page describes the results of measuring the ringing amounts at the  $V_{OUT}$  pin using the output current ( $I_{OUT}$ ), load capacitance ( $C_L$ ), input voltage fluctuation width ( $\Delta V_{IN}$ ), and temperature as parameters.

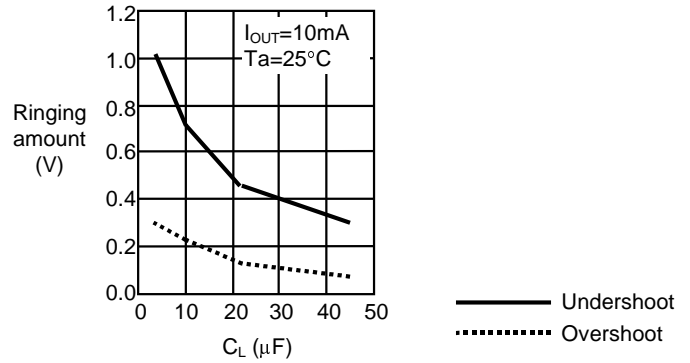
**Reference data**

Line transient response of S-81250SG

1.  $I_{OUT}$  dependency

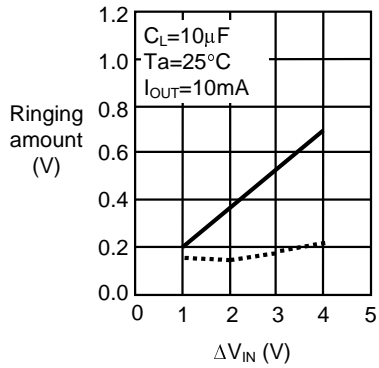


2.  $C_L$  dependency

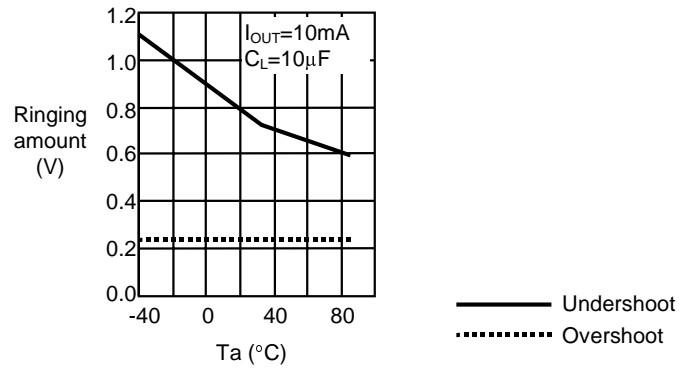


3.  $\Delta V_{IN}$  dependency

$\Delta V_{IN}$  shows the difference between the low voltage fixed to 6 V and the high voltage. For example,  $\Delta V_{IN} = 2$  V means the difference between 6 V and 8 V.

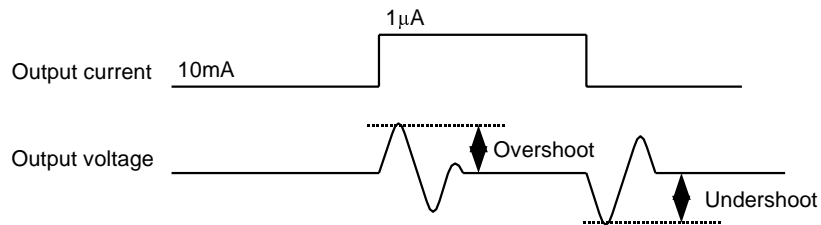


4. Temperature dependency

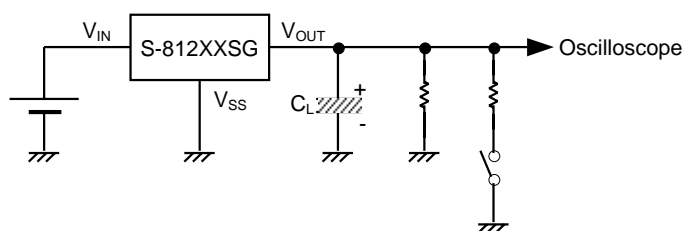


**2. Load transient response**

The overshoot and undershoot are caused in the output voltage if the output current fluctuates while the input voltage is constant. Figure 9 shows the output voltage fluctuation due to output current change between 10mA and 1  $\mu$ A in square wave. Table 20 shows the parameter dependency when output current fluctuates. For reference, Figure 10 describes the measuring circuit.



**Figure 9 Output voltage fluctuation due to output current fluctuation**



**Figure 10 Measuring circuit**



# HIGH-PRECISION VOLTAGE REGULATOR

## S-812XXSG Series

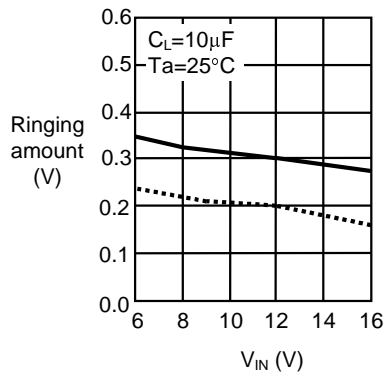
Table 28 Parameter dependency due to output current fluctuation

| Parameter                                   | Method to decrease overshoot | Method to decrease undershoot |
|---------------------------------------------|------------------------------|-------------------------------|
| Output current fluctuation $\Delta I_{OUT}$ | Decrease                     | Decrease                      |
| Load capacitance $C_L$                      | Increase                     | Increase                      |
| Input voltage $V_{IN}$                      | Increase                     | Increase                      |
| Temperature $T_a$                           | —                            | —                             |

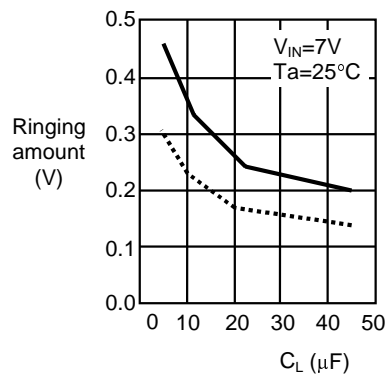
For reference, the following describes the results of measuring the ringing amounts at the  $V_{OUT}$  pin using the input voltage ( $V_{IN}$ ), load capacitance ( $C_L$ ), output current fluctuation width ( $\Delta I_{OUT}$ ), and temperature as parameters.

Reference data Load transient response of S-81250SG

1.  $V_{IN}$  dependency

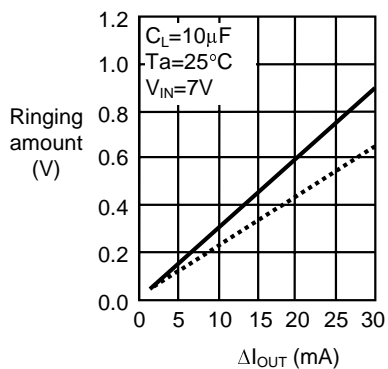


2.  $C_L$  dependency

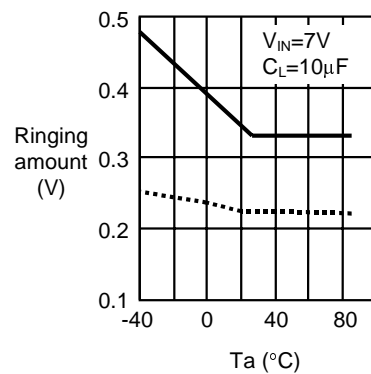


3.  $\Delta I_{OUT}$  dependency

$\Delta I_{OUT}$  shows the difference between the low current fixed to 1  $\mu A$  and the high. For example,  $\Delta I_{OUT}=10$  mA means the difference between 10mA and 1  $\mu A$ .



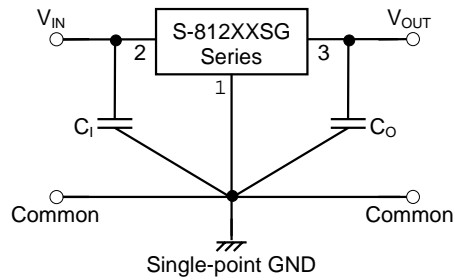
4. Temperature dependency



— Undershoot  
 ..... Overshoot

■ **Standard Circuit**

The basic circuit using the S-812XXSG Series is shown in Figure 11.

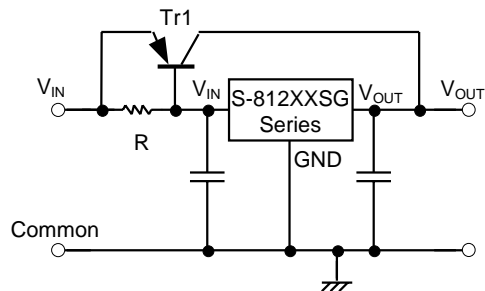


**Figure 11**

■ **Application Circuits**

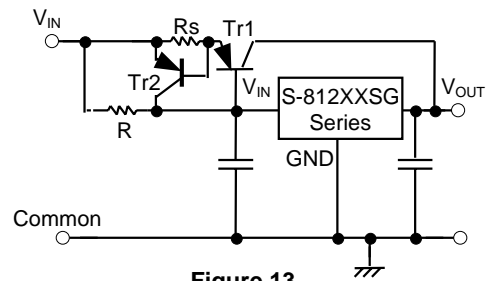
1. **High output current positive voltage regulator**

Figure 12 shows a circuit for increasing the output current.



**Figure 12**

Short-circuit protection of Tr1 is possible by adding the sense resistor  $R_S$  and the PNP transistor as shown in Figure 13.



**Figure 13**

# HIGH-PRECISION VOLTAGE REGULATOR

## S-812XXSG Series

### 2. Circuits for increasing output voltage

If the output voltage you need cannot be found in our product line-up, the designs in Figures 14 or 15 will increase output voltages easily.

$$V_{OUT} = V_{XX} \left( 1 + \frac{R_2}{R_1} \right) + I_{SS} \cdot R_2 \approx V_{XX} \left( 1 + \frac{R_2}{R_1} \right)$$

Because of its low current consumption, the S-812XXSG Series can set the resistor values, and  $R_1$  and  $R_2$  high to lower the power consumption of whole systems.

Current flows to the Zener diode ( $D_i$ ) through the quiescent current ( $I_{SS}$ ) of the S-812XXSG Series, and the GND terminal rises for the voltage of  $D_i$ .

When  $D_i$  cannot drive with a quiescent current, the added resistance  $R$  increases the current flowing through  $D_i$ .

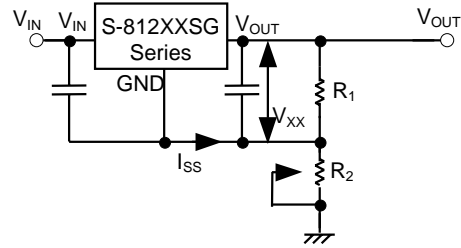


Figure 14

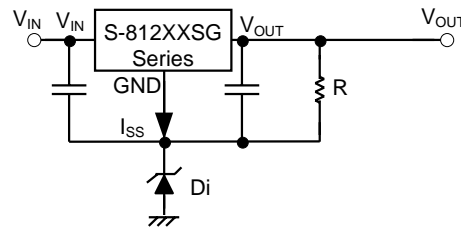


Figure 15

### 3. Constant current regulator

The S-812XXSG Series can be used as a constant-current regulator within allowable dissipation limits.

$$I_{OUT} = \frac{V_{XX}}{R_A} + I_{SS}$$

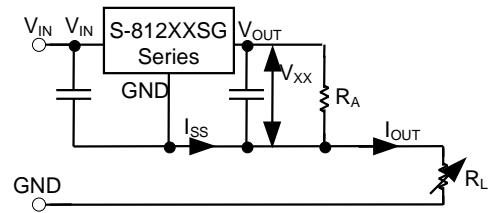


Figure 16 Constant current regulator

### 4. Dual supply

A dual supply can be formed using the S-812XXSG Series.

Figure 17 shows a circuit example for receiving two outputs (5 V and 8 V) with the S-81230SG and the S-81250SG. As the resistance  $R$  lets the quiescent current of  $IC_1$  pass,  $R$  is unnecessary if the minimum output current of  $IC_2$  is more than the  $IC_1$  quiescent current.

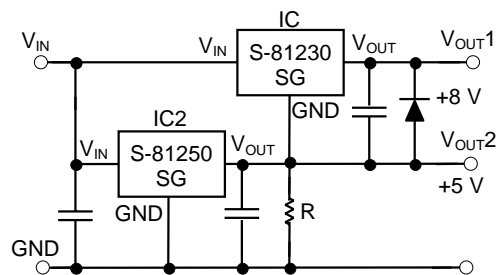


Figure 17 Dual power source

■ Notes on Design

- Voltage regulators may oscillate if small or zero capacity is connected to IC input when the impedance of the power source is high and a large capacity is connected to IC output.
- The S-812XXSG Series has no short-current circuit limiting. The element may break by exceed current of erroneous short-current.
- Keep the output current more than 10  $\mu$ A when using the product of  $V_{OUT} \leq 2.6$  V under the condition of high input voltage and high temperature.
- Do not apply any ripple voltage under the condition in Figure 18 to  $V_{IN}$  terminal.

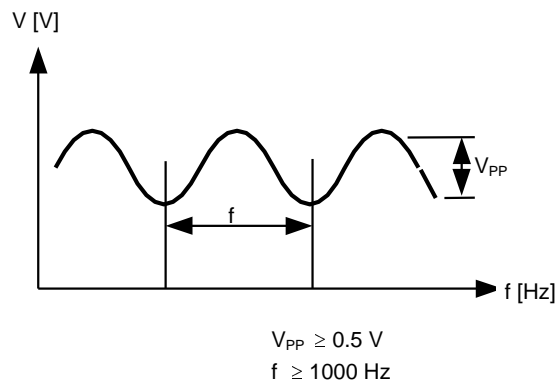


Figure 18

- Mount diodes for IC protection, when connecting another power supply to  $V_{OUT}$  terminal.

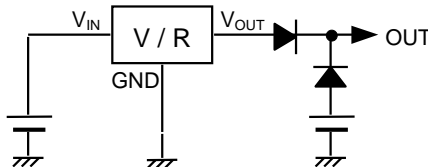


Figure 19

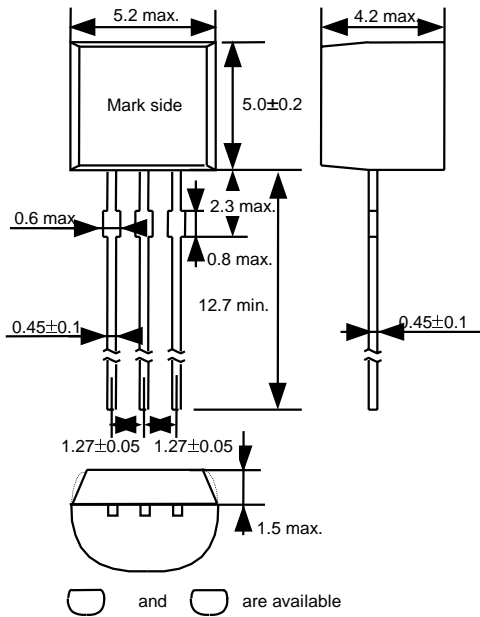
- When designing for mass production using an application circuit described here, keep the deviation of components and temperature characteristic.

# HIGH-PRECISION VOLTAGE REGULATOR

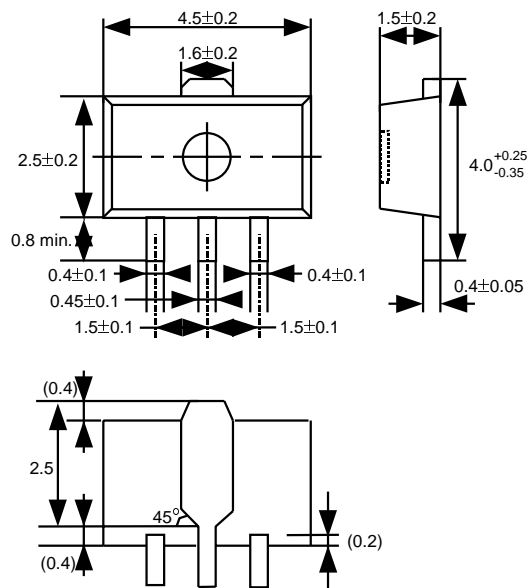
## S-812XXSG Series

### ■ Dimensions

(1) TO-92



(2) SOT-89-3



(3) SOT-23-5

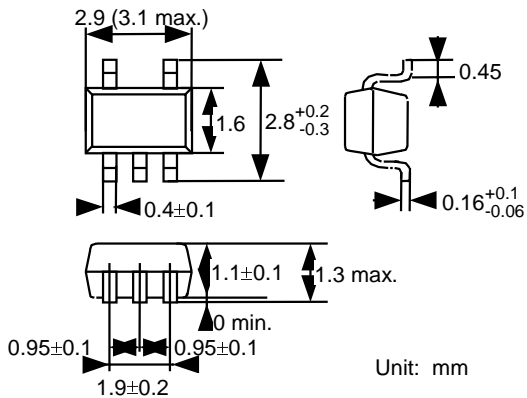
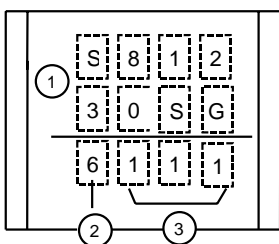


Figure 20

### ■ Markings

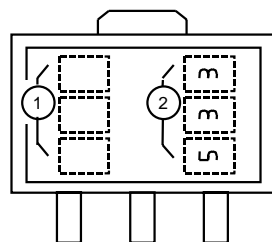
(1) TO-92



- ① Product name
- ② Last digit of the year
- ③ Lot No.

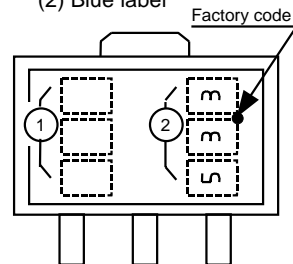
(2) SOT-89-3

(1) White label



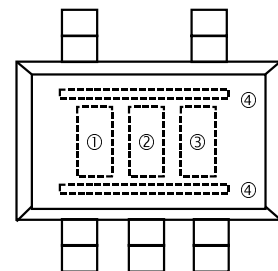
- ① Product name (abbreviation)
- ② Lot NO.

(2) Blue label



- ① Product name (abbreviation)
- ② Lot NO.

(3) SOT-23-5

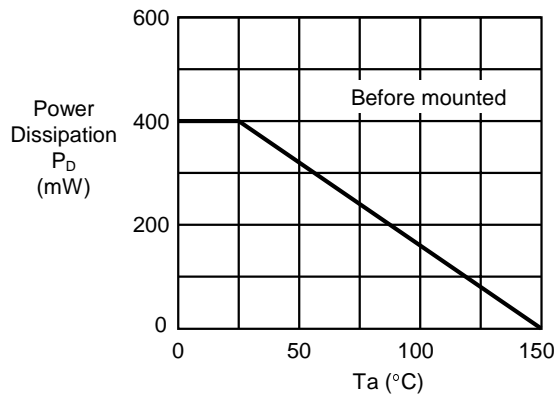


- ① to ② Product name (abbreviation)
- ③ to ④ Lot NO.  
③: Alphabet  
④: Dot on one side

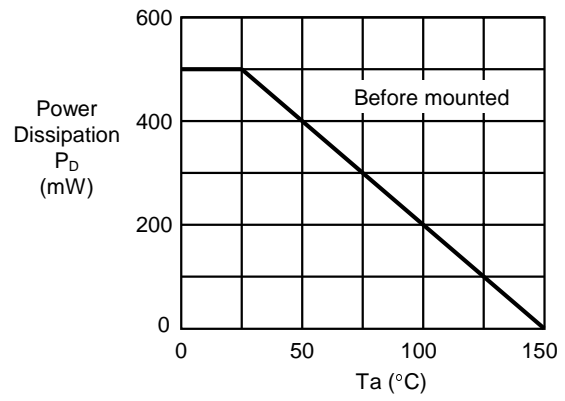
Figure 21

■ Package Power Dissipation

(1) TO-92



(2) SOT-89-3



(3) SOT-23-5

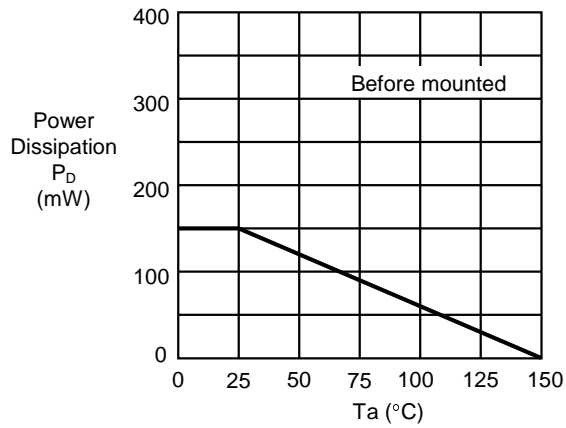


Figure 22

**HIGH-PRECISION VOLTAGE REGULATOR**  
**S-812XXSG Series**

■ Taping Dimensions

1. SOT-89-3

1.1 Tape specifications

T1 and T2 types are available depending upon the direction of ICs on the tape.

(1) White label (without a hole in the center of embossed area)

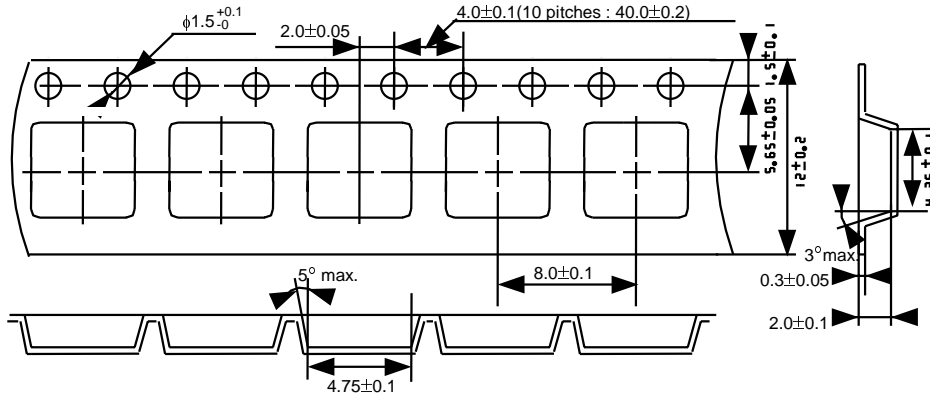
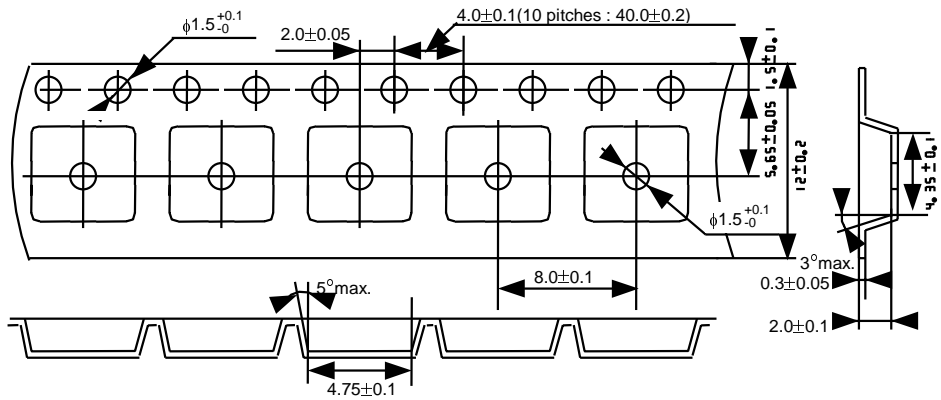


Figure 23

(2) Blue label (with a hole in the center of embossed area)



Unit: mm

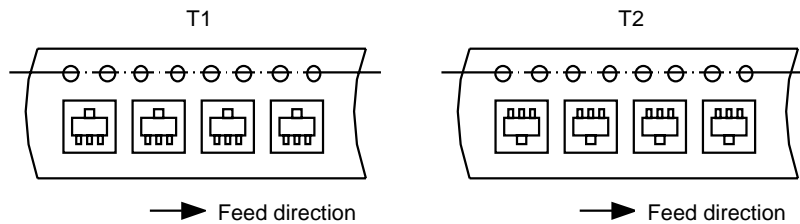


Figure 24

1.2 Reel specifications

1 reel holds 1000 regulators.

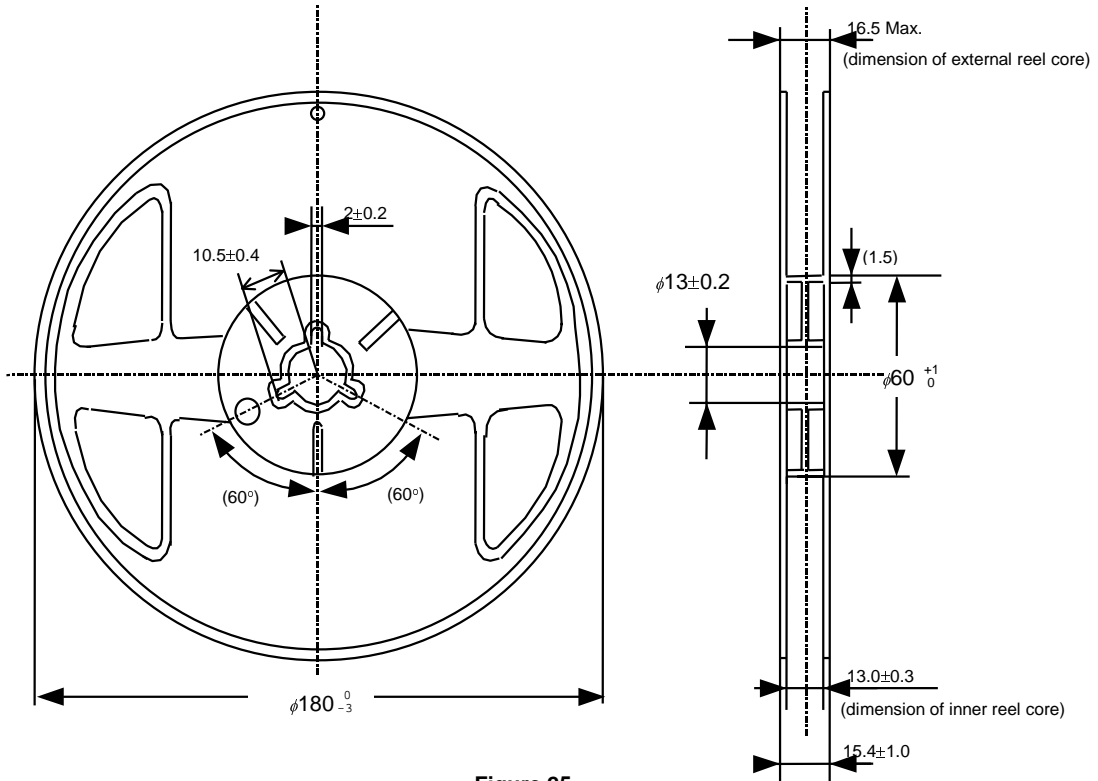


Figure 25

Unit: mm

1.3 Magazine Dimensions

1 stick holds 25 regulators.

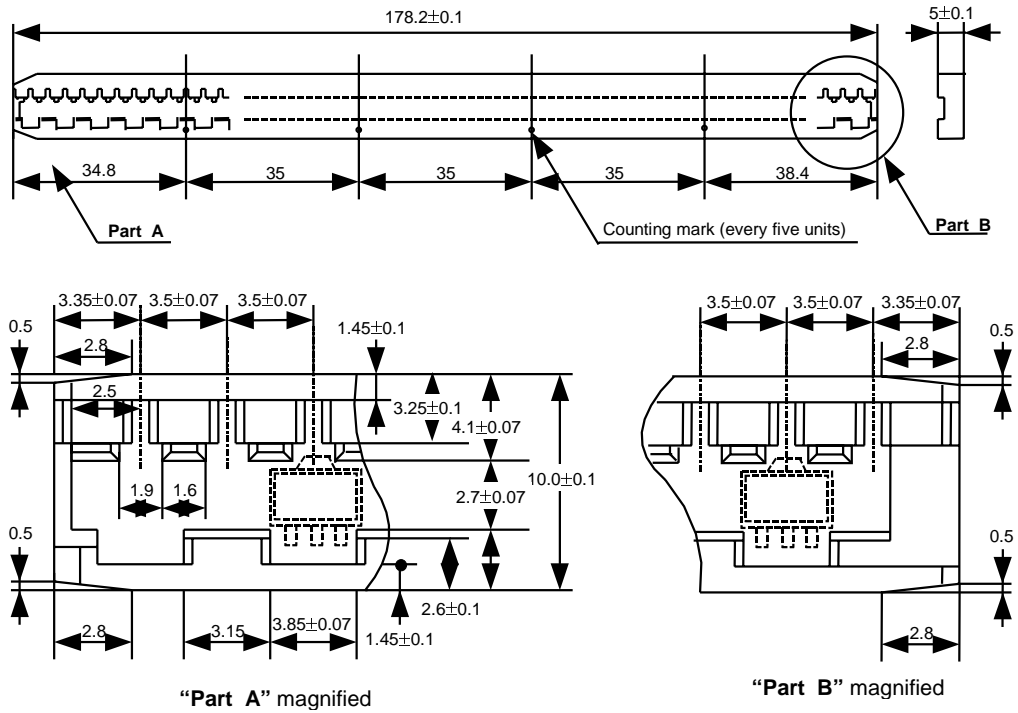


Figure 26

Unit : mm



# HIGH-PRECISION VOLTAGE REGULATOR

## S-812XXSG Series

### 2. SOT-23-5

#### 2.1 Tape specifications

T1 and T2 types are available depending upon the direction of ICs on the tape.

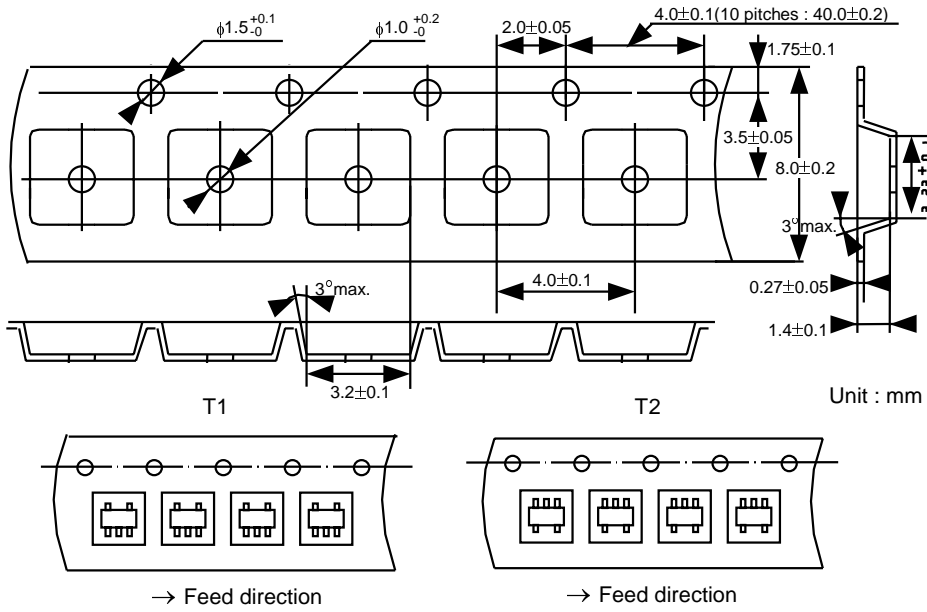


Figure 27

The top cover tape comes in 2 tones ; opaque, semi-transparent and transparent.

#### 2.2 Reel specifications

1 reel holds 3000 regulators.

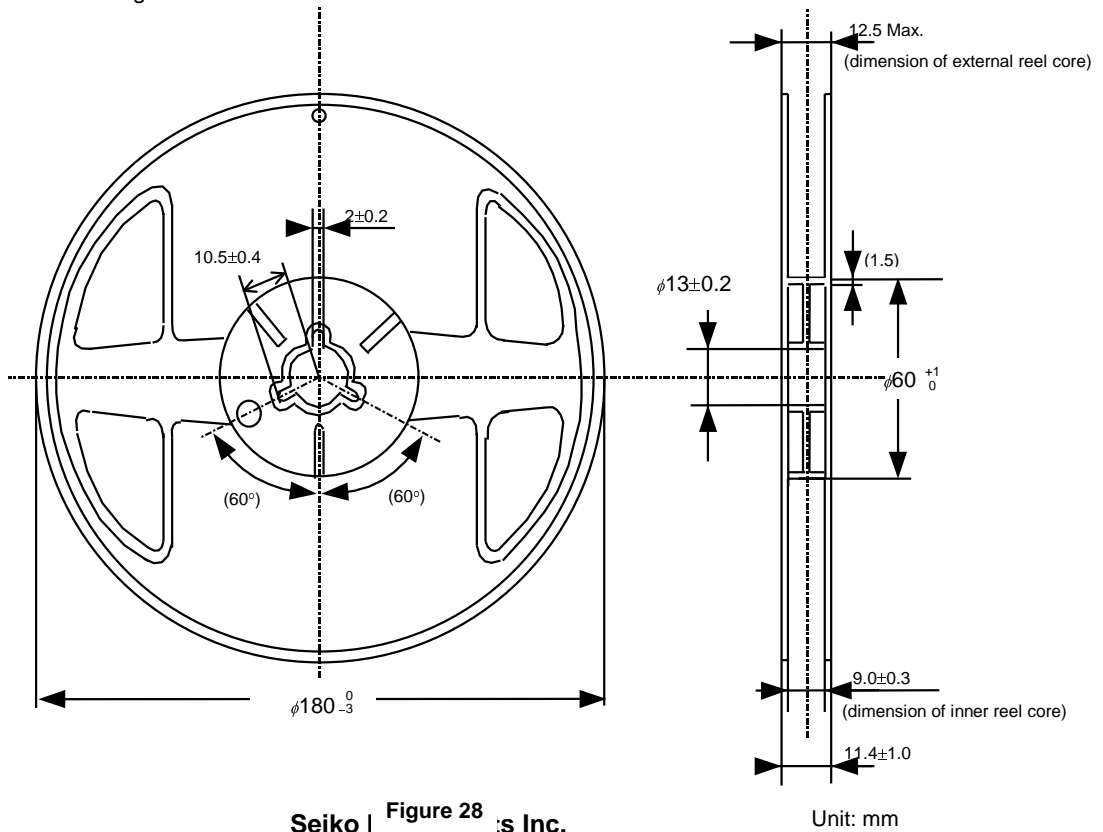
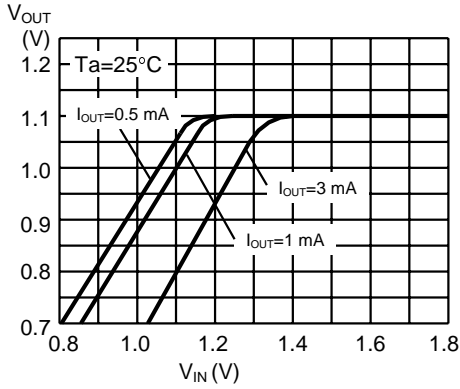


Figure 28 Seiko Instruments Inc.

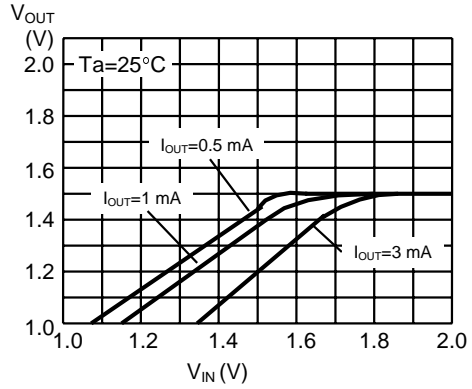
■ Characteristics

1 Input voltage - output voltage

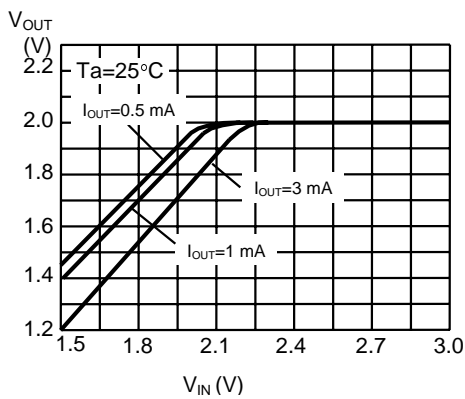
1.1 S-81211SG series



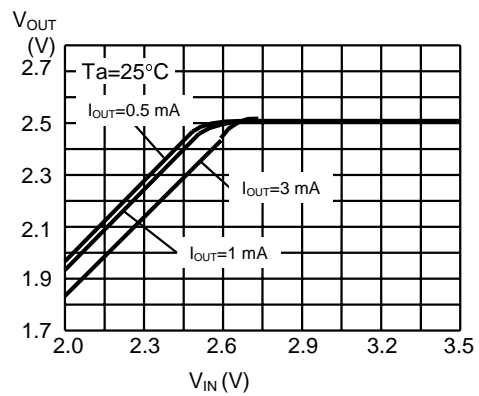
1.2 S-81215SG series



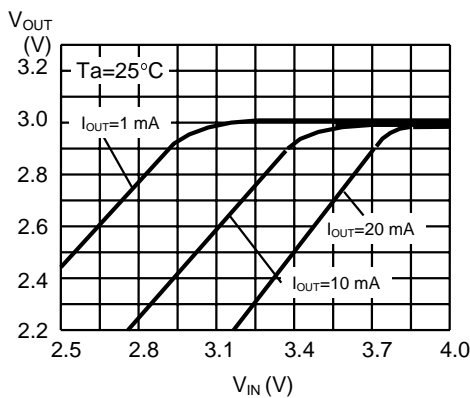
1.3 S-81220SG series



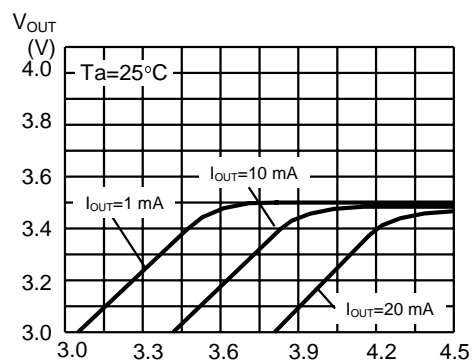
1.4 S-81225SG series



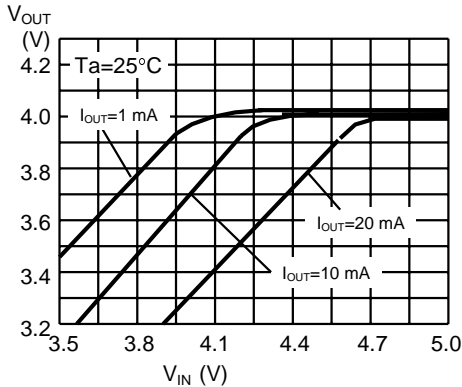
1.5 S-81230SG series



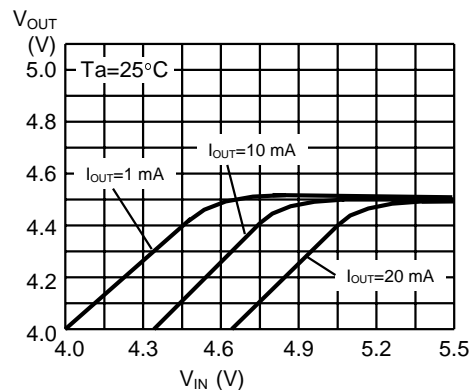
1.6 S-81235SG series



1.7 S-81240SG series



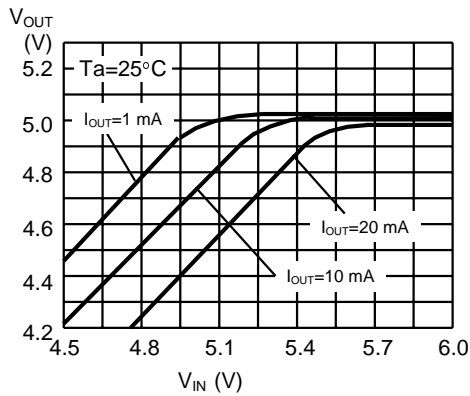
1.8 S-81245SG series



# HIGH-PRECISION VOLTAGE REGULATOR

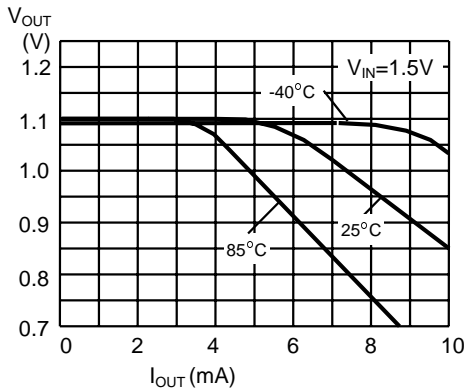
## S-812XXSG Series

### 1.9 S-81250SG series

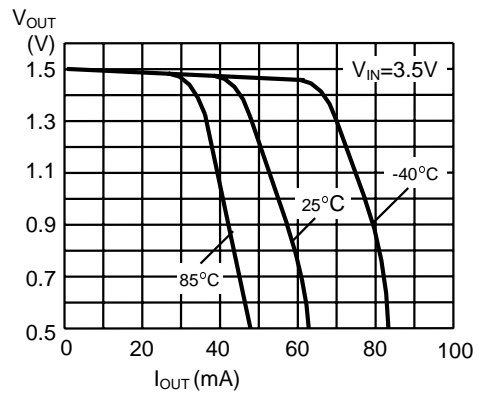


## 2. Output current - output voltage

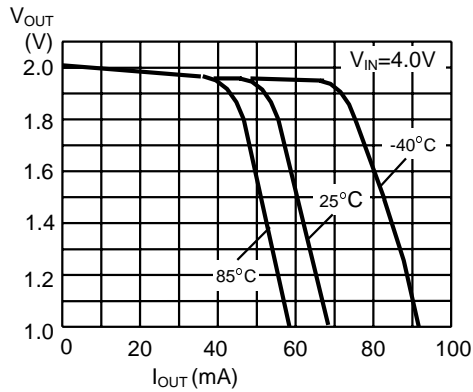
### 2.1 S-81211SG series



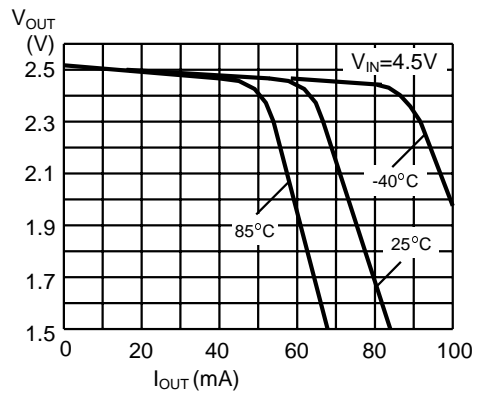
### 2.2 S-81215SG series



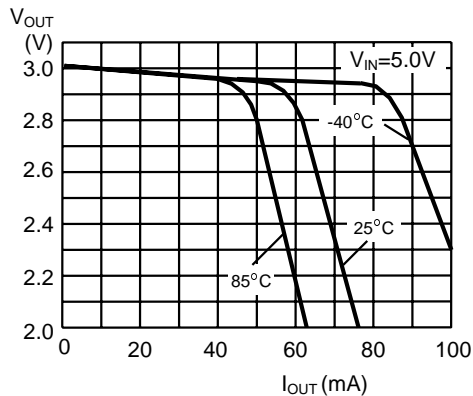
### 2.3 S-81220SG series



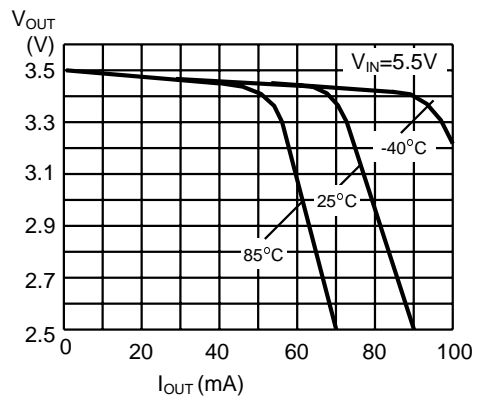
### 2.4 S-81225SG series



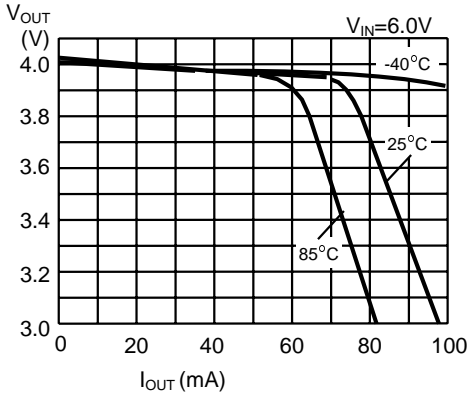
### 2.5 S-81230SG series



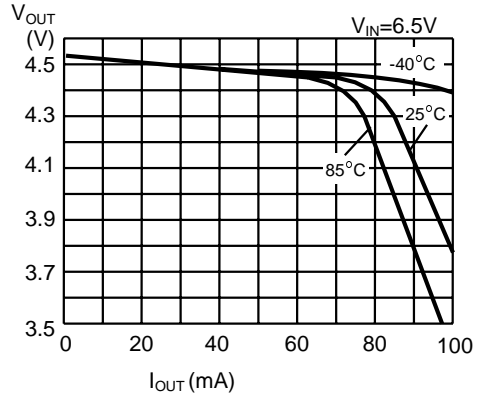
### 2.6 S-81235SG series



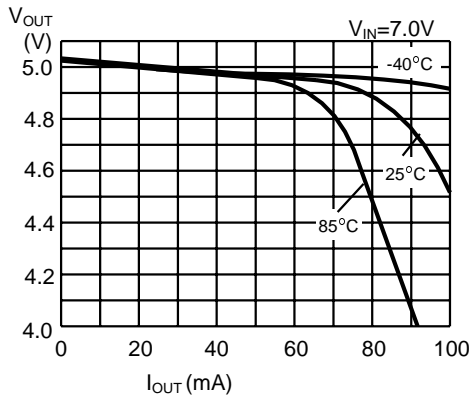
2.7 S-81240SG series



2.8 S-81245SG series

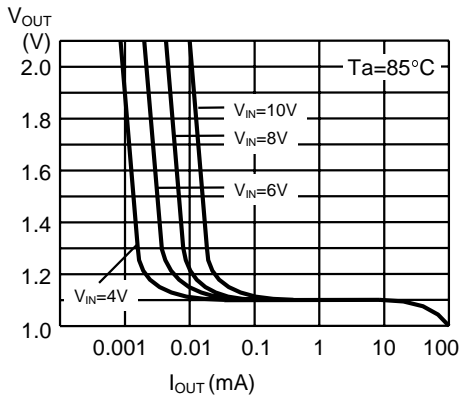


2.9 S-81250SG series

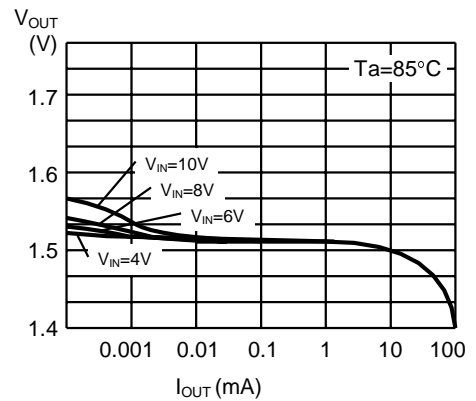


**3. Output current - output voltage (at low load)**

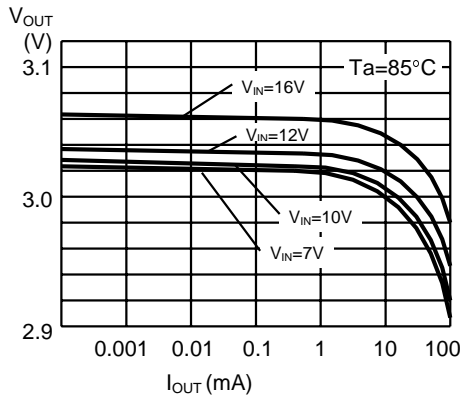
3.1  $V_{OUT} \leq 1.4V$



3.2  $1.5V \leq V_{OUT} \leq 2.6V$



3.3  $V_{OUT} \leq 2.7V$

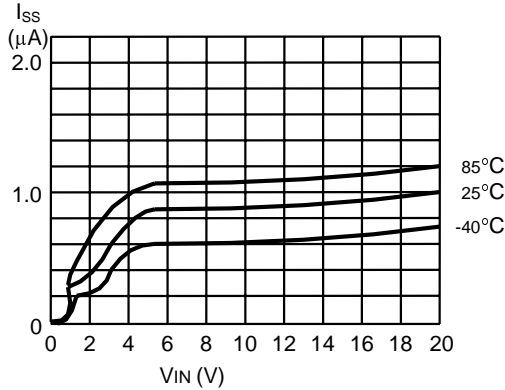


# HIGH-PRECISION VOLTAGE REGULATOR

## S-812XXSG Series

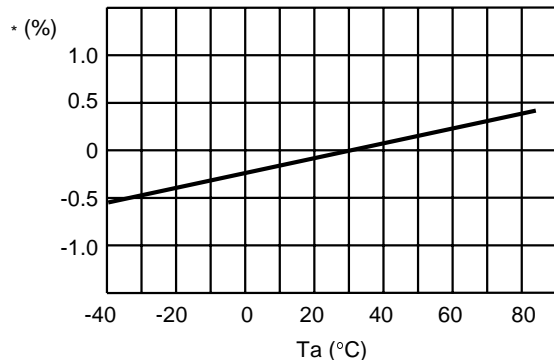
### 4. Input voltage - current consumption

S-81250SG series

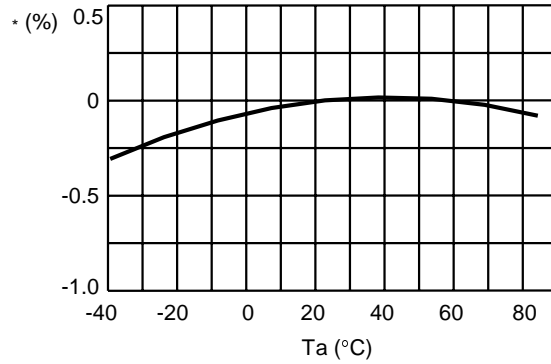


### 5. Temperature characteristic of output voltages

5.1  $V_{OUT} \geq 1.3 V$



5.2  $V_{OUT} \geq 1.4 V$

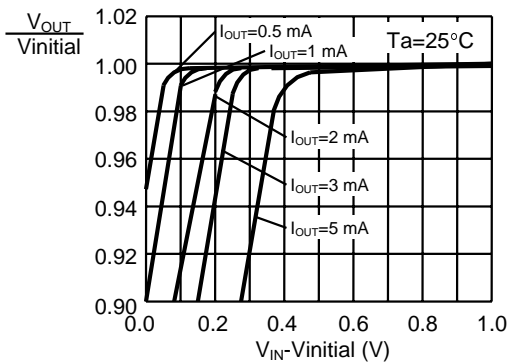


\* Definite with fluctuation ratio based on the output voltage at  $T_a=25^{\circ}C$

### 6. I/O voltage difference characteristics

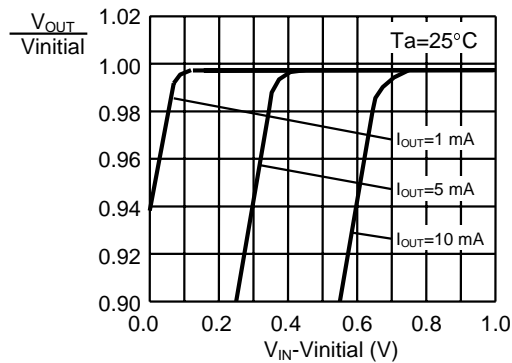
6.1 S-81211SG series

(V<sub>initial</sub>: Output voltage value at  $V_{IN}=1.5 V$  and  $I_{OUT}=0.5 mA$ )



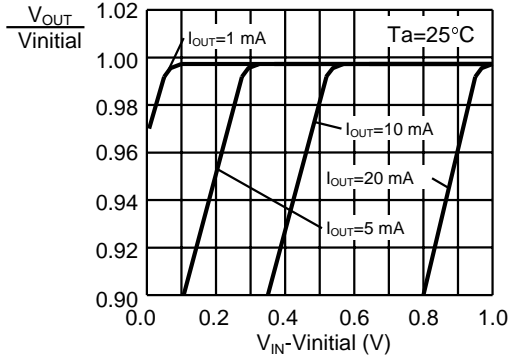
6.2 S-81215PG series

(V<sub>initial</sub>: Output voltage value at  $V_{IN}=3.5 V$  and  $I_{OUT}=0.5 mA$ )



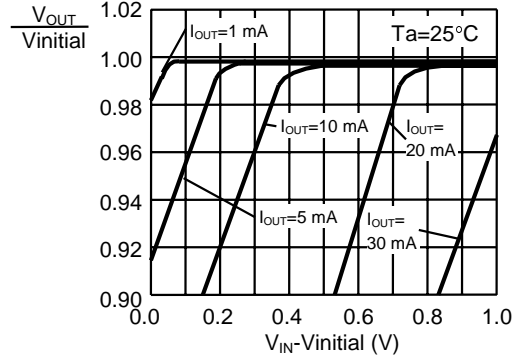
**6.3 S-81220SG series**

(V<sub>initial</sub>: Output voltage value at V<sub>IN</sub>=4.0 V and I<sub>OUT</sub>=10 mA)



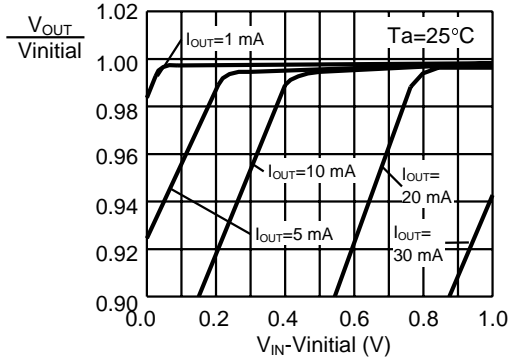
**6.4 S-81225SG series**

(V<sub>initial</sub>: Output voltage value at V<sub>IN</sub>=4.5 V and I<sub>OUT</sub>=10 mA)



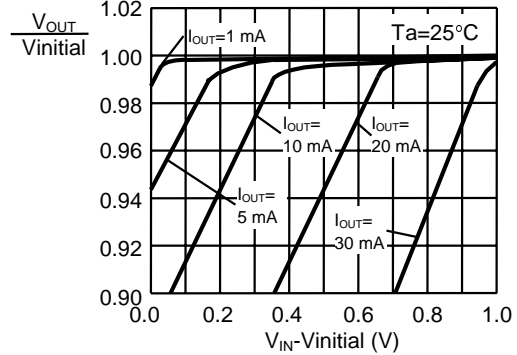
**6.5 S-81230SG series**

(V<sub>initial</sub>: Output voltage value at V<sub>IN</sub>=5.0 V and I<sub>OUT</sub>=10 mA)



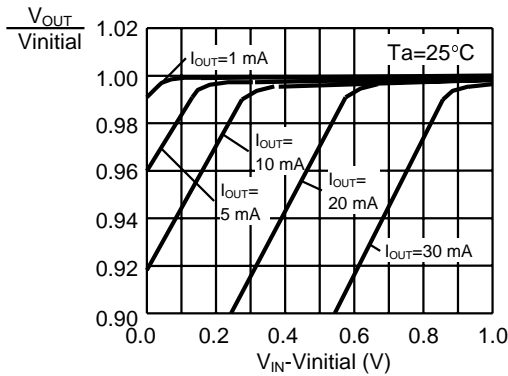
**6.6 S-81235SG series**

(V<sub>initial</sub>: Output voltage value at V<sub>IN</sub>=5.5 V and I<sub>OUT</sub>=10 mA)



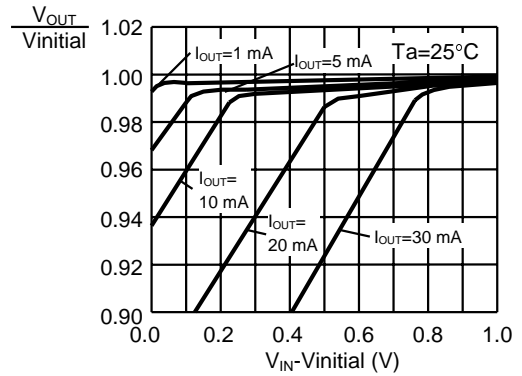
**6.7 S-81240SG series**

(V<sub>initial</sub>: Output voltage value at V<sub>IN</sub>=6.0 V and I<sub>OUT</sub>=10 mA)



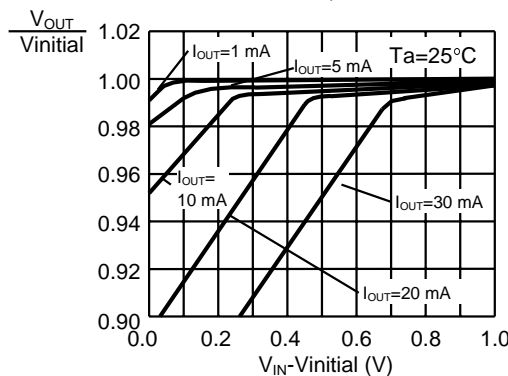
**6.8 S-81245SG series**

(V<sub>initial</sub>: Output voltage value at V<sub>IN</sub>=6.5 V and I<sub>OUT</sub>=10 mA)



**6.9 S-81250PG series**

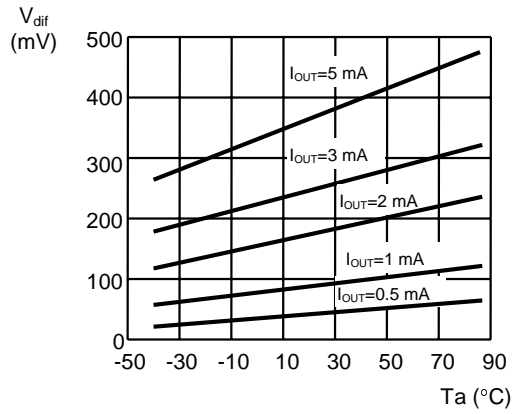
(V<sub>initial</sub>: Output voltage value at V<sub>IN</sub>=7.0 V and I<sub>OUT</sub>=10 mA)



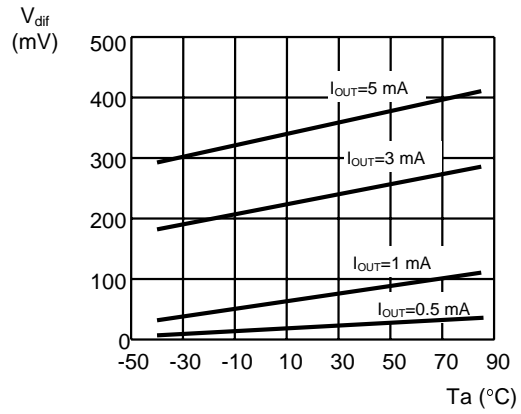
# HIGH-PRECISION VOLTAGE REGULATOR S-812XXSG Series

## 7. Temperature characteristic of I/O voltage difference

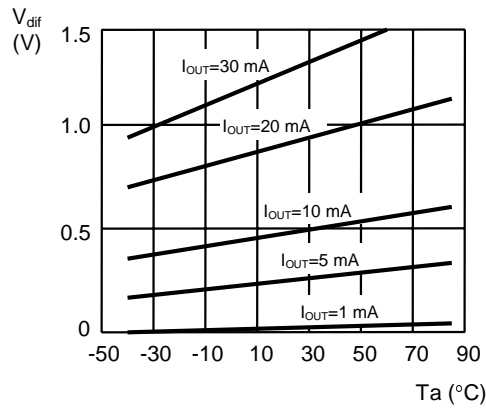
7.1 S-81211SG series



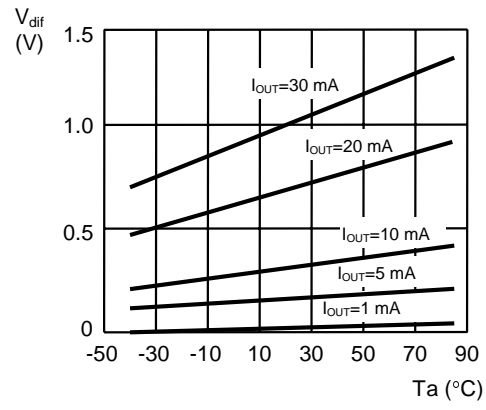
7.2 S-81215SG series



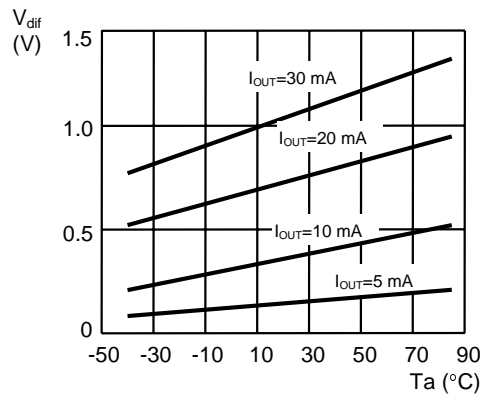
7.3 S-81220SG series



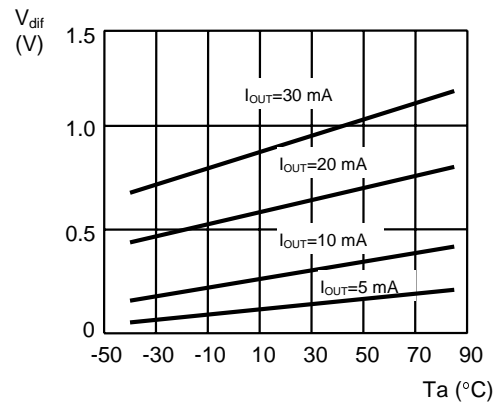
7.4 S-81225SG series



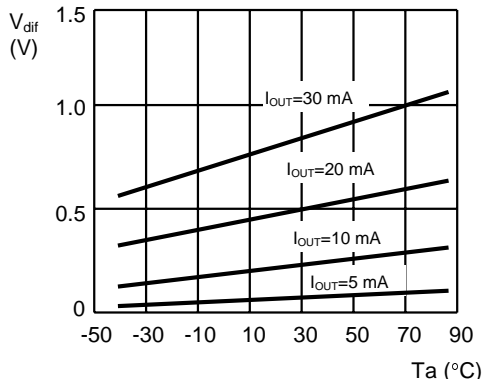
7.5 S-81230SG series



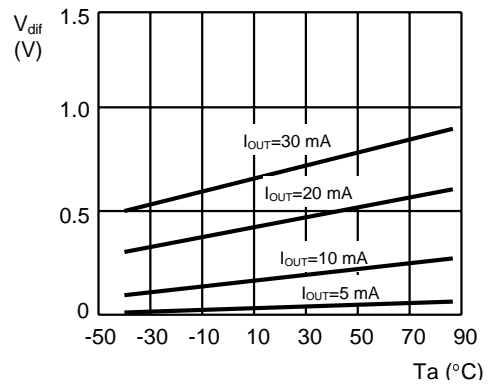
7.6 S-81235SG series



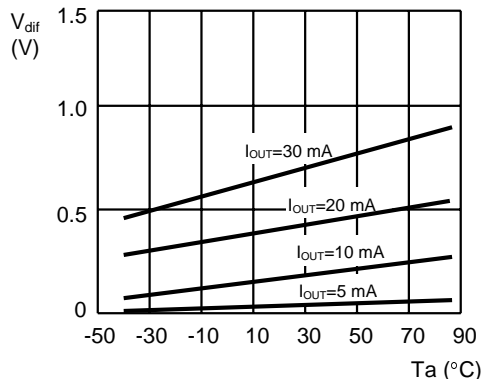
7.7 S-81240SG series



7.8 S-81245SG series

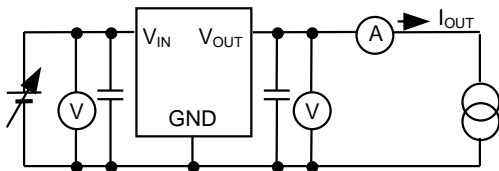


7.9 S-81250SG series

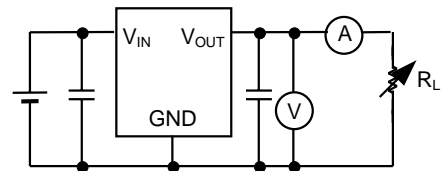


■ **Measuring Circuits**

1. Input voltage - output voltage



2. Output current - output voltage



3. Current consumption

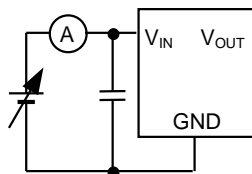


Figure 29



# Collection of Product FAQs

Author: Imura Yukihiro

Date: 99/05/31 (Monday) 11:50 (Modified:)

## <Information level>

A: Public (Printing O.K.)

Index: A: General

## <Product>

Division name: 01 IC

Category 1: 11 Power Supply

Category 2: 2. Voltage Regulators

Cal No.: Overall

Related Documents:

## Question:

Why do people dislike using electrolytic capacitors?

## Answer:

Because electrolytic capacitors may cause failure due to short-circuit or even burn when subjected to an overcurrent or overvoltage, an increasing number of users are declining to use electrolytic capacitors, as UL and other safety standards require that such products be incombustible. As a result, ceramic capacitors of no short-circuit and made of nonflammable materials attract most users.

## <Remarks>

FAQ No.: 11S814005